

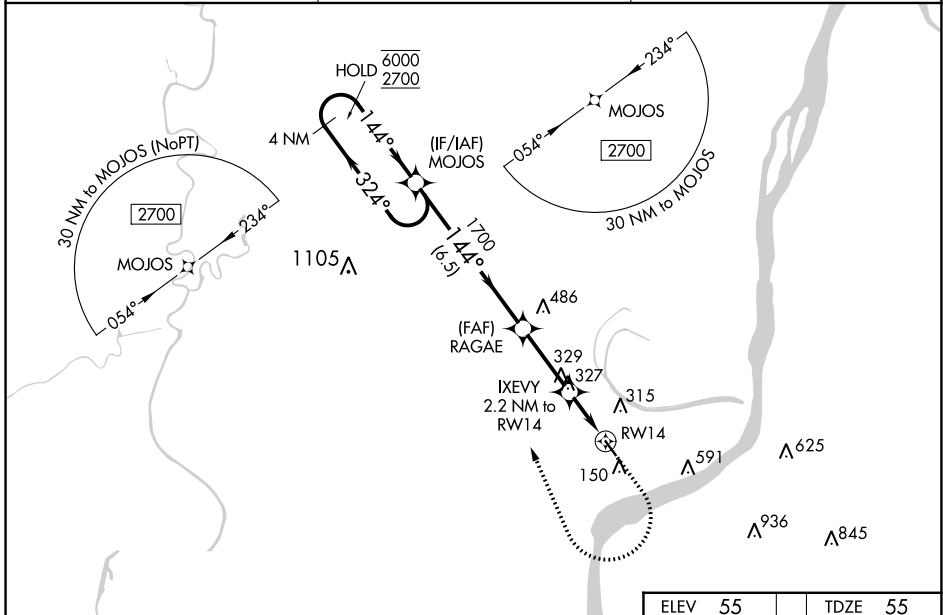
WAAS CH 78337 W14A	APP CRS 144°	Rwy Idg TDZE Apt Elev	3701 55 55
--	------------------------	-----------------------------	---------------------------------------

RNAV (GPS) RWY 14

CONCORDIA PARISH (ØR4)

RNP APCH - GPS.	<p>MISSED APPROACH: Climb to 1000 then climbing right turn to 3000 direct MOJOS and hold.</p>
<p>⚠ Rwy 14 helicopter visibility reduction below ¼ SM NA. For uncompensated Baro-VNAV systems, LNAV/VNAV NA below -15°C or above 54°C. When local altimeter setting not received, use Natchez altimeter setting and increase LPV DA to 408 feet; increase LNAV/VNAV DA to 540 feet and all visibilities ½ SM; increase all MDAs 60 feet and LNAV visibility Cat C ¼ SM, and Circling visibility Cat C ¼ SM. Baro-VNAV and VDP NA when using Natchez altimeter setting.</p>	

AWOS-3 118.2	HOUSTON CENTER 120.975 299.6	UNICOM 122.8 (CTAF) 0
------------------------	--	---------------------------------



4 NM Holding Pattern		ELEV 55	TDZE 55	
<p>MOJOS</p> <p>6000 ← 324°</p> <p>2700 → 144°</p> <p>GP 3.00°</p> <p>TCH 51</p>		<p>1000</p> <p>3000</p> <p>MOJOS</p>	<p>144°</p> <p>3701 X.75</p>	
<p>RAGAE</p> <p>1700</p> <p>IXEVY 2.2 NM to RW14</p> <p>1.5 NM to RW14</p> <p>RW14</p> <p>6.5 NM</p> <p>2.8 NM</p> <p>0.7 NM</p> <p>1.5 NM</p>		<p>MIRL Rwy 14-32 0</p> <p>REIL Rwy 14 and 32 0</p>		
CATEGORY	A	B	C	D
LPV DA	352-1 297 (300-1)			NA
LNAV/VNAV DA	484-1¼ 429 (500-1¼)			NA
LNAV MDA	580-1	525 (600-1)	580-1½ 525 (600-1½)	NA
CIRCLING	680-1	625 (700-1)	960-2¾ 905 (1000-2¾)	NA

SC-4, 22 FEB 2024 to 21 MAR 2024

SC-4, 22 FEB 2024 to 21 MAR 2024

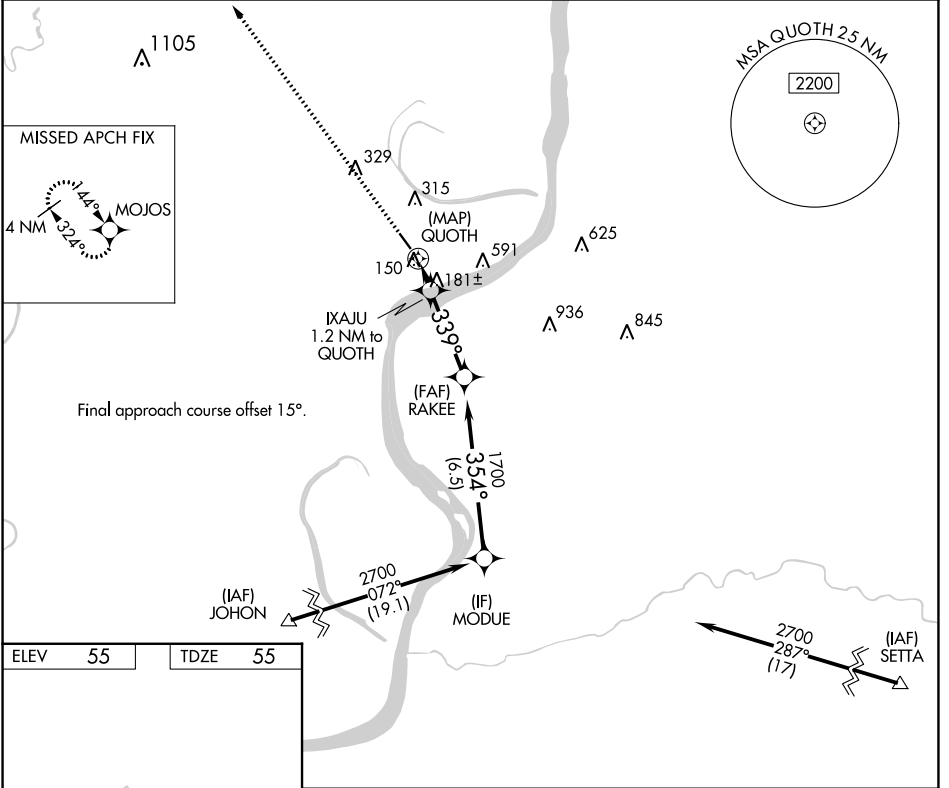
APP CRS	Rwy Idg	3701
339°	TDZE	55
	Apt Elev	55

RNAV (GPS) RWY 32

CONCORDIA PARISH (ØR4)

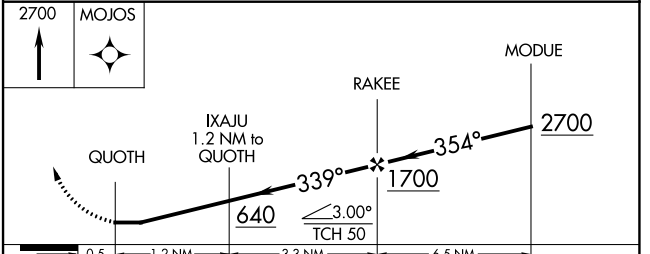
<p>▽ DME/DME RNP-0.3 NA. Use Natchez altimeter setting; when not received, use Esler Rgnl altimeter setting and increase all MDA 60 feet and Circling Cat C visibility ¼ mile. Helicopter visibility reduction below ¾ SM NA.</p> <p>▲ NA</p>	<p>MISSED APPROACH: Climb to 2700 direct MOJOS and hold.</p>
---	--

AWOS-3 118.2	HOUSTON CENTER 120.975 299.6	UNICOM 122.8 (CTAF) 0
------------------------	--	---------------------------------



ELEV	55	TDZE	55
------	----	------	----

REIL Rwy 14 and 32 **0**
MIRL Rwy 14-32 **0**



CATEGORY	A	B	C	D
LNAV MDA	500-1	445 (500-1)	500-1 3/8 445 (500-1 3/8)	NA
C CIRCLING	680-1	625 (700-1)	960-2 3/4 905 (1000-2 3/4)	NA

SC-4, 22 FEB 2024 to 21 MAR 2024

SC-4, 22 FEB 2024 to 21 MAR 2024