

WAAS CH 42506 W05A	APP CRS 051°	Rwy Idg TDZE Apt Elev	5000 235 235
--	------------------------	-----------------------------	---

RNAV (GPS) RWY 5

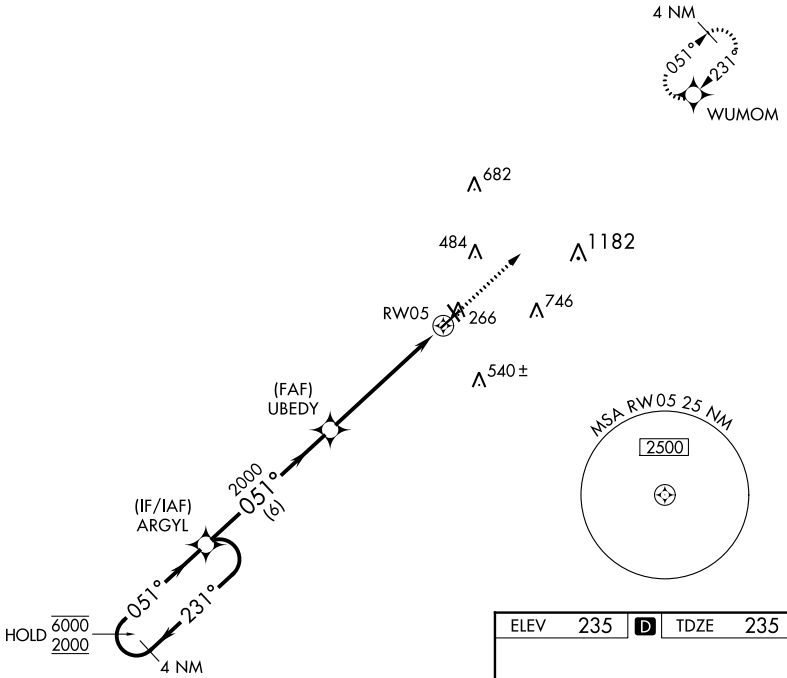
COOK COUNTY (15J)

RNP APCH - GPS.

▼ Procedure NA at night.
 ▲ NA Rwy 5 helicopter visibility reduction below 1 SM NA.
 Baro-VNAV NA.
 Use Moultrie altimeter setting.

MISSED APPROACH: Climb to 3000 direct WUMOM and hold, continue climb-in-hold to 3000.

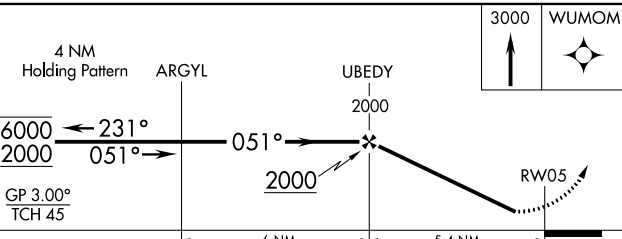
MGR AWOS-3PT 118.925	VALDOSTA APP CON★ 126.6 285.6	UNICOM 122.8 (CTAF) 0
--------------------------------	---	---------------------------------



SE-4, 22 FEB 2024 to 21 MAR 2024

SE-4, 22 FEB 2024 to 21 MAR 2024

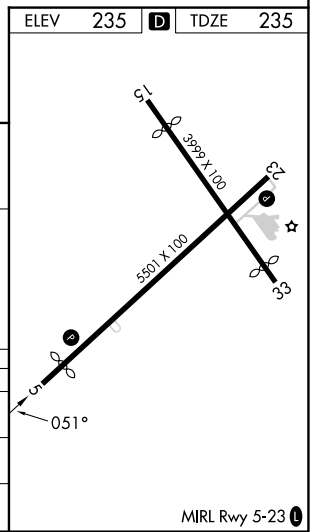
ELEV	235	D	TDZE	235
------	-----	---	------	-----



3000 WUMOM

↑

✦



CATEGORY	A	B	C	D
LPV DA		534-1	299 (300-1)	
LNAV/VNAV DA		595-1	360 (400-1)	
LNAV MDA	740-1	505 (600-1)	740-1 $\frac{3}{8}$	505 (600-1 $\frac{3}{8}$)