

WAAS CH <b>86923</b> <b>W16A</b>	APP CRS <b>157°</b>	Rwy Idg <b>3008</b> TDZE <b>526</b> Apt Elev <b>533</b>
--	------------------------	---

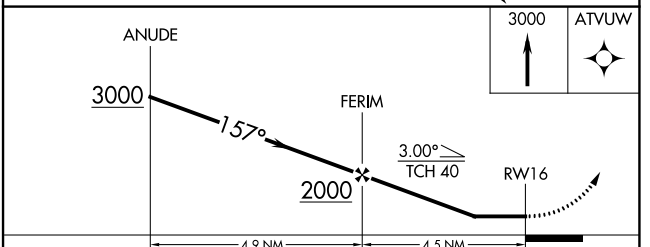
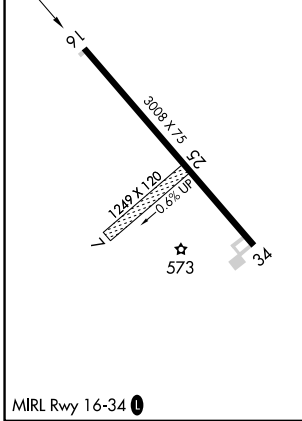
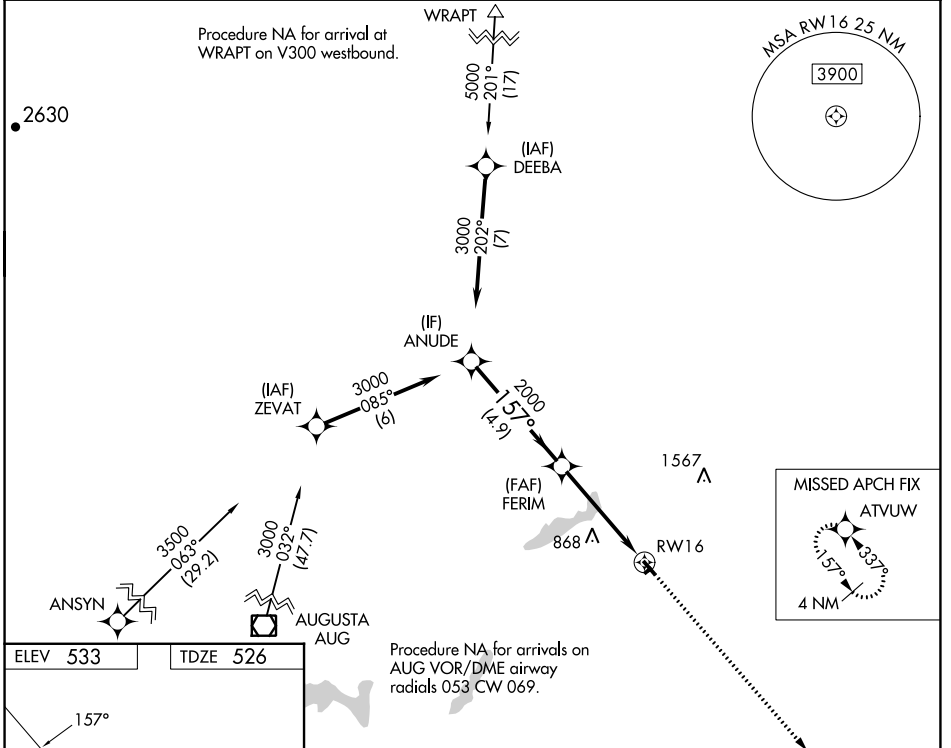
# RNAV (GPS) RWY 16

DEXTER RGNL (1BØ)

**⚠** DME/DME RNP-0.3 NA. Procedure NA at night. Rwy 16, 34 helicopter visibility reduction below 1 SM NA. Use Bangor altimeter setting, when not received use Augusta altimeter setting and increase all MDA 40 feet. Circling NA to Rwy 7 and 25.

**MISSED APPROACH:** Climb to 3000 direct ATUVUW and hold.

BANGOR APP CON <b>118.925 239.3</b>	UNICOM <b>122.8 (CTAF) Ø</b>
--	---------------------------------



CATEGORY	A	B	C	D
LP MDA	1260-1	734 (800-1)		NA
RNAV MDA	1300-1 774 (800-1)	1300-1¼ 774 (800-1¼)		NA
CIRCLING	1300-1 767 (800-1)	1360-1¼ 827 (900-1¼)		NA

NE-1, 22 FEB 2024 to 21 MAR 2024

NE-1, 22 FEB 2024 to 21 MAR 2024

WAAS CH <b>65723</b> <b>W34A</b>	APP CRS <b>337°</b>	Rwy Idg <b>3008</b> TDZE <b>526</b> Apt Elev <b>533</b>
--	------------------------	---

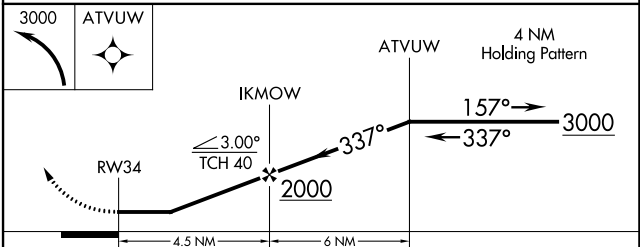
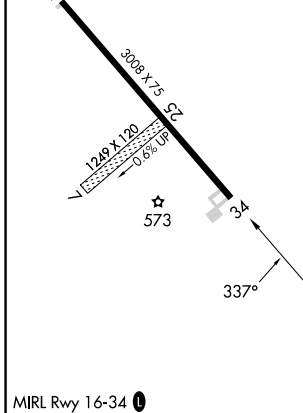
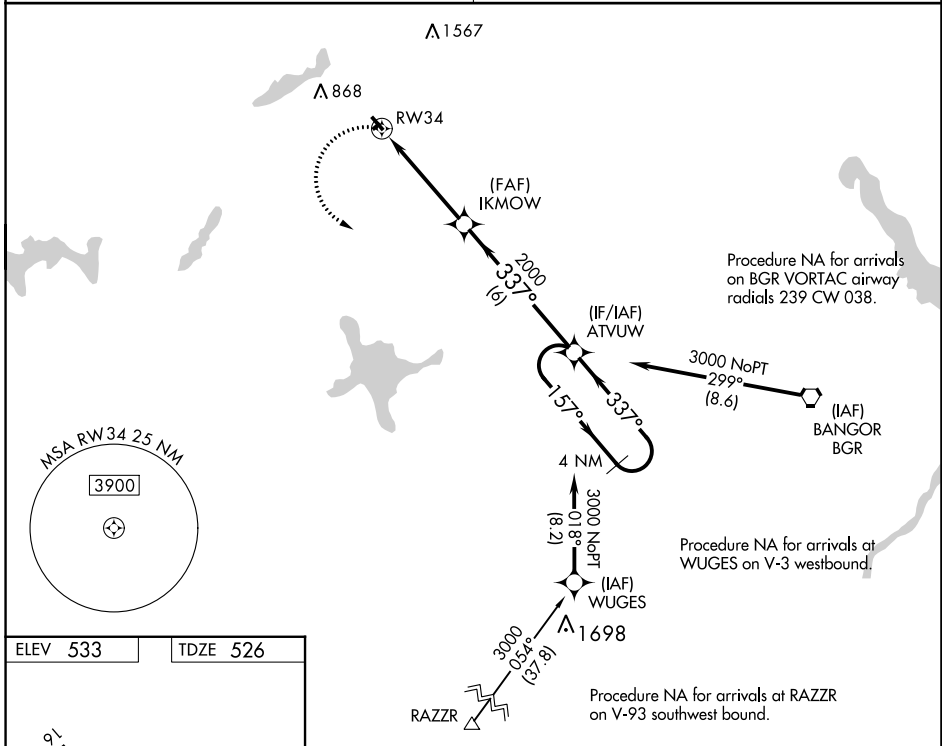
# RNAV (GPS) RWY 34

DEXTER RGNL (1B~~0~~)

**⚠** Procedure NA at night. DME/DME RNP-0.3 NA. Use Bangor altimeter setting, when not received, use Augusta altimeter setting and increase all MDA 40 feet.  
**⚠** Rwy 16, 34 helicopter visibility reduction below 1 SM NA. Circling NA to Rwys 7 and 25.

MISSED APPROACH: Climbing left turn to 3000 direct ATVUW and hold.

BANGOR APP CON <b>118.925 239.3</b>	UNICOM <b>122.8 (CTAF) 0</b>
--	---------------------------------



CATEGORY	A	B	C	D
LP MDA	980-1	454 (500-1)	NA	
LNAV MDA	1140-1	614 (700-1)	NA	
CIRCLING	1220-1 687 (700-1)	1360-1¼ 827 (900-1¼)	NA	

NE-1, 22 FEB 2024 to 21 MAR 2024

NE-1, 22 FEB 2024 to 21 MAR 2024