

WAAS CH 48921 W17A	APP CRS 175°	Rwy Idg TDZE 840 Apt Elev 845	5014 840 845
--	------------------------	---	---

RNAV (GPS) RWY 17

ARDMORE DOWNTOWN EXEC (1F)(0)

RNP APCH-GPS.

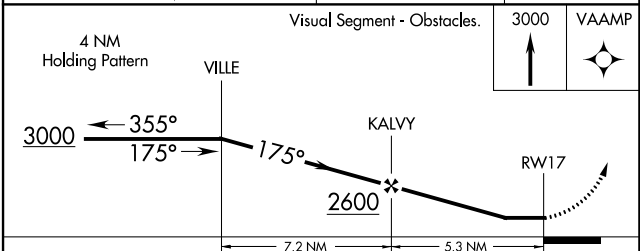
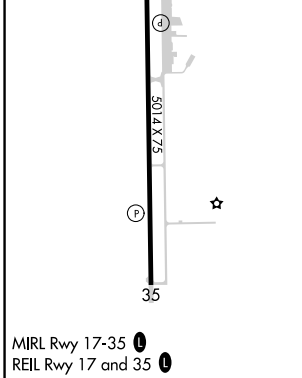
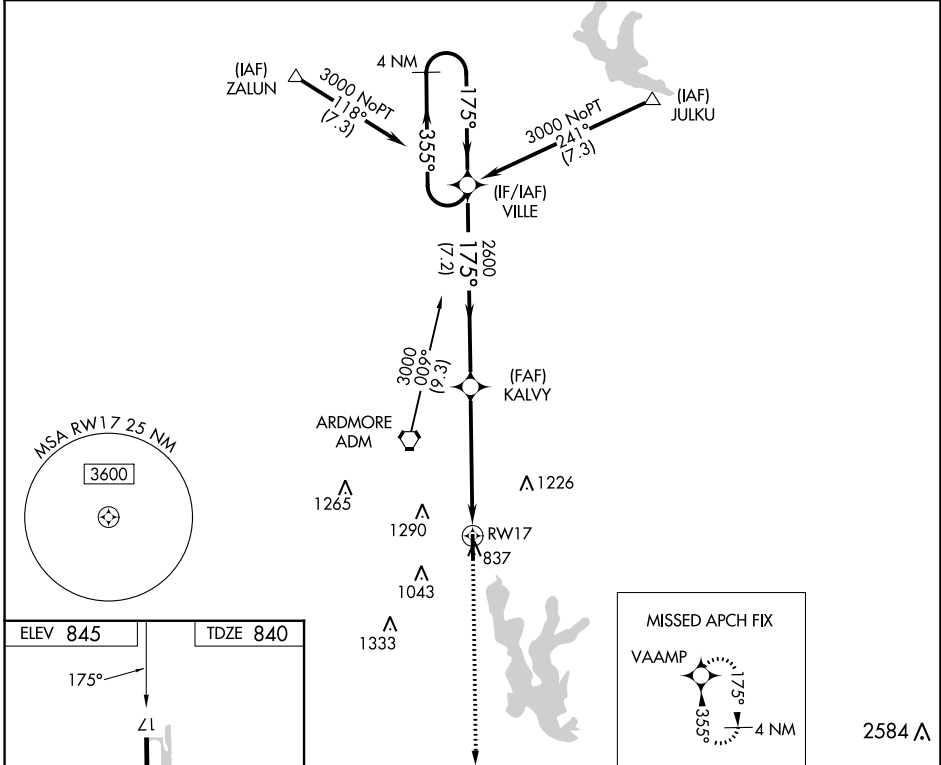
⚠ Rwy 17 helicopter visibility reduction below 1 SM NA.

MISSED APPROACH: Climb to 3000
direct VAAMP and hold.

AWOS-3
118.15

FORT WORTH CENTER
124.75 323.0

UNICOM
122.7 (CTAF) 0



CATEGORY	A	B	C	D
LP MDA	1360-1	520 (600-1)	1360-1½	520 (600-1½)
LNVA MDA	1360-1	520 (600-1)	1360-1½	520 (600-1½)
CIRCLING	1400-1	555 (600-1)	1600-2¼ 755 (800-2¼)	1640-2½ 795 (800-2½)

SC-1, 22 FEB 2024 to 21 MAR 2024

SC-1, 22 FEB 2024 to 21 MAR 2024

WAAS CH 62921 W35A	APP CRS 355°	Rwy Idg TDZE 845 Apt Elev 845	5014 845 845
--	------------------------	---	---

RNAV (GPS) RWY 35

ARDMORE DOWNTOWN EXEC (1F(0))

RNP APCH-GPS.

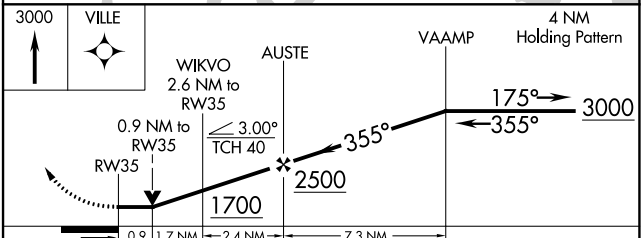
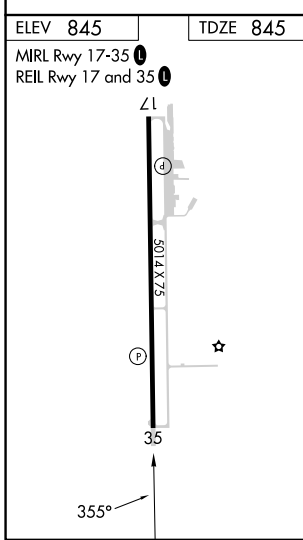
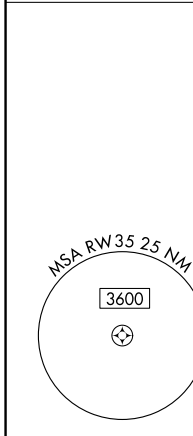
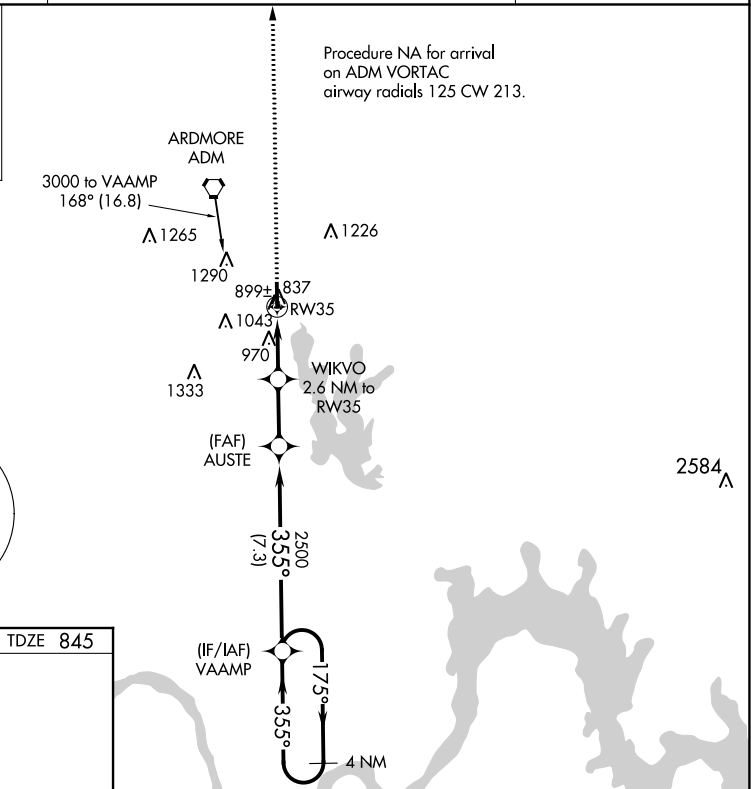
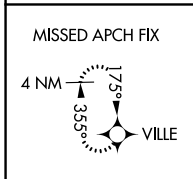
▽
▲ Rwy 35 helicopter visibility reduction below ¾ SM NA.

MISSED APPROACH: Climb to 3000 direct VILLE and hold.

AWOS-3
118.15

FORT WORTH CENTER
124.75 323.0

UNICOM
122.7 (CTAF) 0



CATEGORY	A	B	C	D
LP MDA		1200-1	355 (400-1)	
LNAV MDA		1220-1	375 (400-1)	
CIRCLING	1400-1	555 (600-1)	1600-2¼ 755 (800-2¼)	1640-2½ 795 (800-2½)

SC-1, 22 FEB 2024 to 21 MAR 2024

SC-1, 22 FEB 2024 to 21 MAR 2024