

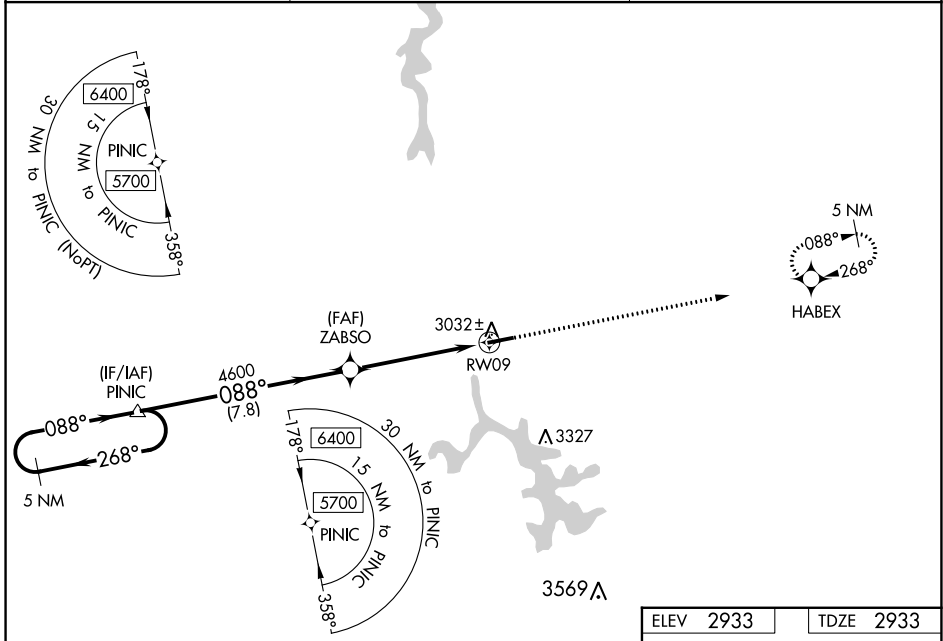
WAAS CH 69624 W09A	APP CRS 088°	Rwy Idg 5000 TDZE 2933 Apt Elev 2933
---------------------------------	------------------------	---

RNAV (GPS) RWY 9
GARRETT COUNTY (2G4)

▼ Baro-VNAV and VDP NA when using Morgantown altimeter setting. For uncompensated Baro-VNAV systems, LNAV/VNAV NA below -20° (-4°F) or above 54°C (130°F). Helicopter visibility reduction below ¾ SM NA. DME/DME RNP -0.3 NA. When local altimeter setting not received, use Morgantown altimeter setting and increase all DA and MDA 300 feet. Increase LPV and LNAV/VNAV all Cats visibility 1½ mile, LNAV Cat C visibility ¾ mile and Circling Cat C visibility 1 mile.

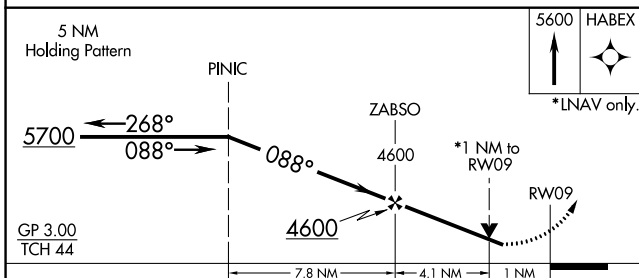
▲ NA MISSED APPROACH: Climb to 5600 direct HABEX and hold.

AWOS-3 120.125	CLARKSBURG APP CON ★ 119.425 284.65	UNICOM 123.0 (CTAF) 0
--------------------------	---	---------------------------------



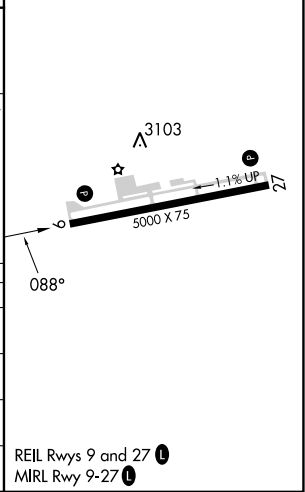
NE-3, 22 FEB 2024 to 21 MAR 2024

NE-3, 22 FEB 2024 to 21 MAR 2024



ELEV 2933	TDZE 2933
-----------	-----------

CATEGORY	A	B	C	D
LPV DA	3183-¾	250 (300-¾)		NA
LNAV/VNAV DA	3183-¾	250 (300-¾)		NA
LNAV MDA	3300-1	367 (400-1)		NA
CIRCLING	3340-1 407 (500-1)	3400-1 467 (500-1)	3500-1½ 567 (600-1½)	NA



REIL Rwy 9 and 27 0
MIRL Rwy 9-27 0