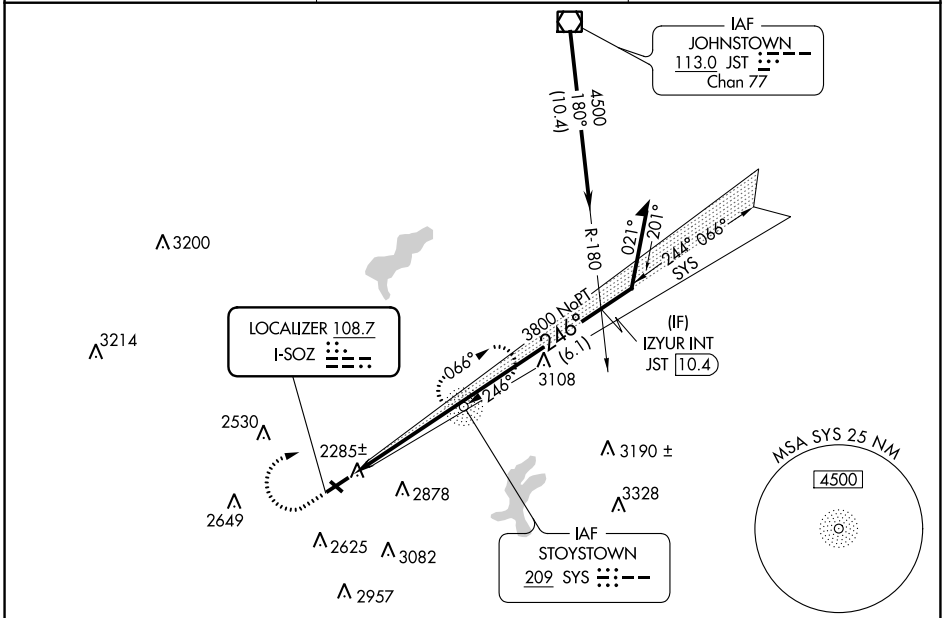


| | | | |
|---------------------------|------------------------|-----------------------------|---|
| LOC I-SOZ 108.7 | APP CRS 246° | Rwy Idg TDZE Apt Elev | 5002 2240 2275 |
|---------------------------|------------------------|-----------------------------|---|

LOC RWY 25
SOMERSET COUNTY (2G9)

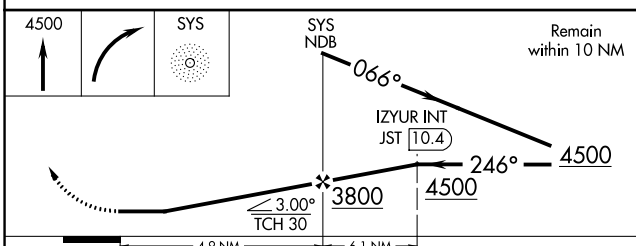
| | | |
|---|---|---|
| ADF required. | | MISSED APPROACH: Climb to 4500 then right turn direct SYS NDB and hold. |
| <p>▼ Procedure NA at night. Rwy 25 helicopter visibility reduction below 1 SM NA. ▲ Circling NA to Rwy 14 and 32.</p> | | |
| AWOS-3P 133.8 | JOHNSTOWN APP CON ★ 121.2 299.2 | UNICOM 122.8 (CTAF) 0 |



| | |
|-----------|-----------|
| ELEV 2275 | TDZE 2240 |
|-----------|-----------|

MIRL Rwy 7-25
REIL Rwys 7 and 25
FAF to MAP 4.9 NM

| | | | | | |
|---------|------|------|------|------|------|
| Knots | 60 | 90 | 120 | 150 | 180 |
| Min:Sec | 4:54 | 3:16 | 2:27 | 1:58 | 1:38 |



| CATEGORY | A | B | C | D |
|----------|-----------------------|-----------------------|-------------------------------|-------------------------------|
| S-25 | 2700-1 | 460 (500-1) | 2700-1 3/8 460 (500-1 3/8) | 2700-1 1/2 460 (500-1 1/2) |
| CIRCLING | 2820-1 545 (600-1) | 2920-1 645 (700-1) | 3520-3 | 1245 (1300-3) |

NE-4, 22 FEB 2024 to 21 MAR 2024

NE-4, 22 FEB 2024 to 21 MAR 2024

| | | | |
|--|------------------------|-----------------------------|---|
| WAAS CH 82205 W25A | APP CRS 246° | Rwy Idg TDZE Apt Elev | 5002 2240 2275 |
|--|------------------------|-----------------------------|---|

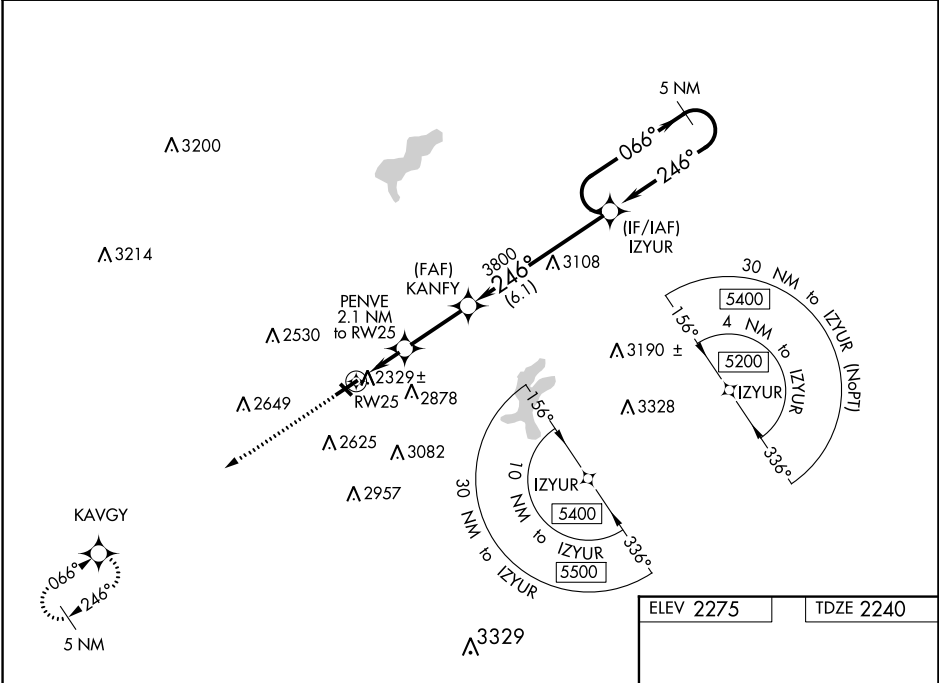
RNAV (GPS) RWY 25

SOMERSET COUNTY (2G9)

⚠ NA Baro-VNAV NA when using Johnstown altimeter setting. For uncompensated Baro-VNAV systems, LNAV/VNAV NA below -19°C (-2°F) or above 53°C (128°F). DME/DME RNP-0.3 NA. Procedure NA at night. Helicopter visibility reduction below 1 SM NA. Circling NA to Rwy 14-32. When local altimeter setting not received, use Johnstown altimeter setting and increase all DA 44 feet and all MDA 60 feet. Increase LPV all Cats and LNAV/VNAV all Cats visibility 1/8 mile and increase LNAV Cat C/D visibility 1/4 mile.

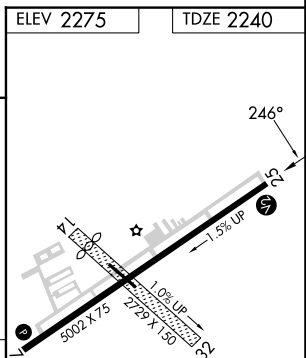
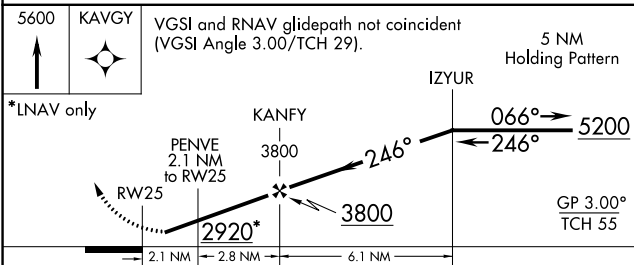
MISSED APPROACH:
Climb to 5600 direct
KAVGY and hold.

| | | |
|-------------------------|---|---------------------------------|
| AWOS-3P 133.8 | JOHNSTOWN APP CON ★ 121.2 299.2 | UNICOM 122.8 (CTAF) 0 |
|-------------------------|---|---------------------------------|



NE-4, 22 FEB 2024 to 21 MAR 2024

NE-4, 22 FEB 2024 to 21 MAR 2024



| CATEGORY | A | B | C | D |
|-------------------|-----------------------|-----------------------|-------------------------|-------------------------|
| LPV DA | | 2490-1 | 250 (300-1) | |
| LNAV/VNAV DA | | 2583-1¼ | 343 (400-1¼) | |
| LNAV MDA | | 2580-1 | 340 (400-1) | |
| C CIRCLING | 2820-1 545 (600-1) | 2920-1 645 (700-1) | 3460-3 1185 (1200-3) | 3520-3 1245 (1300-3) |

MIRL Rwy 7-25
REIL Rws 7 and 25 0

| | | | |
|--|------------------------|-----------------------------|---|
| WAAS CH 66005 W07A | APP CRS 066° | Rwy Idg TDZE Apt Elev | 5002 2275 2275 |
|--|------------------------|-----------------------------|---|

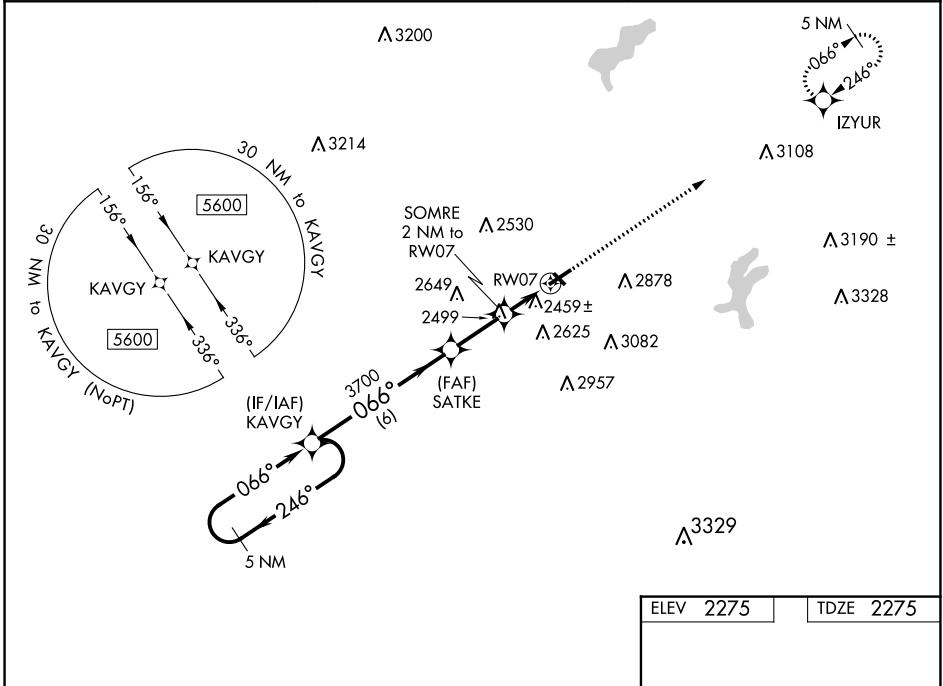
RNAV (GPS) RWY 7

SOMERSET COUNTY (2G9)

⚠ NA Baro-VNAV and VDP NA when using Johnstown altimeter setting. For uncompensated Baro-VNAV systems, LNAV/VNAV NA below -19°C (-2°F) or above 53°C (128°F). DME/DME RNP-0.3 NA. Circling Rwy 25 NA at night. Circling to Rwy 14-32 NA. When local altimeter setting not received, use Johnstown altimeter setting and increase all DA 44 feet and all MDA 60 feet. Increase LPV all Cats visibility 1/8 mile and LNAV/VNAV all Cats visibility 1/4 mile.

MISSED APPROACH:
Climb to 5200 direct IZYUR and hold.

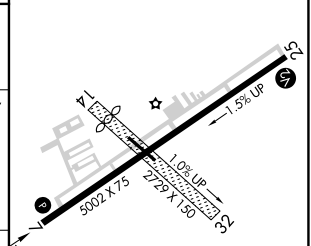
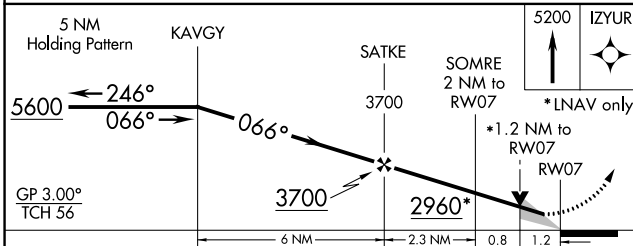
| | | |
|-------------------------|---|---------------------------------|
| AWOS-3P 133.8 | JOHNSTOWN APP CON ★ 121.2 299.2 | UNICOM 122.8 (CTAF) 0 |
|-------------------------|---|---------------------------------|



NE-4, 22 FEB 2024 to 21 MAR 2024

NE-4, 22 FEB 2024 to 21 MAR 2024

| | |
|------------------|------------------|
| ELEV 2275 | TDZE 2275 |
|------------------|------------------|



| CATEGORY | A | B | C | D |
|-------------------|-----------------------|-----------------------|-------------------------|-------------------------|
| LPV DA | | 2525-1 | 250 (300-1) | |
| LNAV/VNAV DA | | 2640-1 1/8 | 365 (400-1 1/8) | |
| LNAV MDA | 2720-1 | 445 (500-1) | 2720-1 3/8 | 445 (500-1 1/8) |
| C CIRCLING | 2820-1 545 (600-1) | 2920-1 645 (700-1) | 3460-3 1185 (1200-3) | 3520-3 1245 (1300-3) |

MIRL Rwy 7-25
REIL Rws 7 and 25 **0**