

WAAS CH 56533 W18A	APP CRS 183°	Rwy Idg 4400 TDZE 898 Apt Elev 898
--	------------------------	---

RNAV (GPS) RWY 18

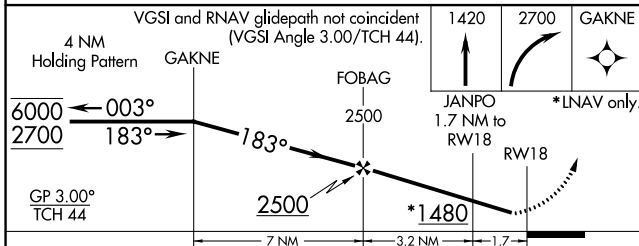
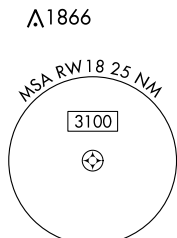
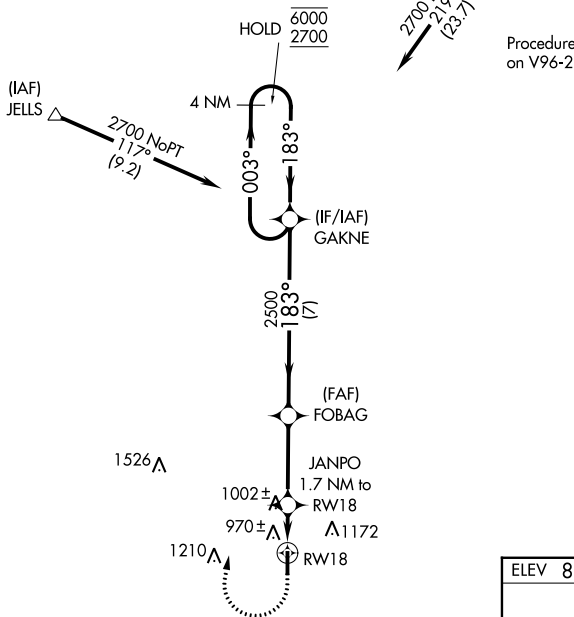
HENDRICKS COUNTY-GORDON GRAHAM FLD (2R2)

RNP APCH - GPS.	MISSED APPROACH: Climb to 1420 then climbing right turn to 2700 direct GAKNE and hold.
▼ ▲ NA	Rwy 18 helicopter visibility reduction below 3/4 SM NA. Baro-VNAV NA. Use Indianapolis Intl altimeter setting.

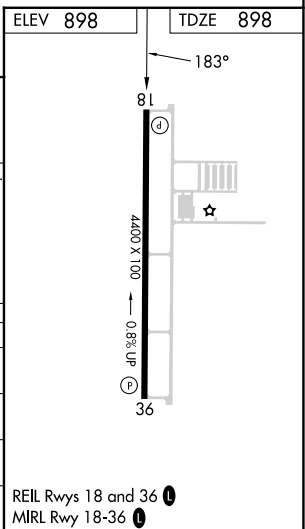
AWOS-3PT 118.025	IND ASOS 134.25	INDIANAPOLIS APP CON 121.1	UNICOM 122.7 (CTAF)
----------------------------	---------------------------	--------------------------------------	-------------------------------

Procedure NA for arrivals at JELLS on V24-128-399 northwest bound.

Procedure NA for arrivals at EDMEW on V96-285 northbound.



CATEGORY	A	B	C	D
LPV DA	1215-7/8	317 (400-7/8)		NA
LNAV/VNAV DA	1242-1	344 (400-1)		NA
LNAV MDA	1300-1	402 (500-1)	1300-1 1/8 402 (500-1 1/8)	NA
CIRCLING	1380-1 482 (500-1)	1560-1 662 (700-1)	1600-2 702 (800-2)	NA



EC-2, 22 FEB 2024 to 21 MAR 2024

EC-2, 22 FEB 2024 to 21 MAR 2024

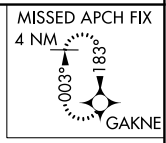
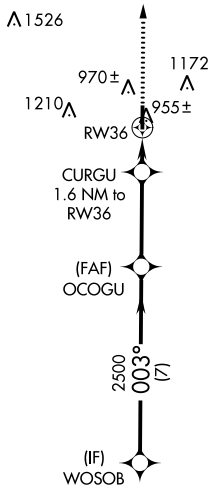
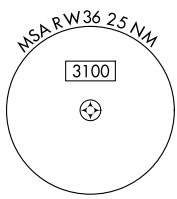
WAAS CH 45833 W36A	APP CRS 003°	Rwy Idg TDZE Apt Elev	4400 884 898
--	------------------------	-----------------------------	---

RNAV (GPS) RWY 36

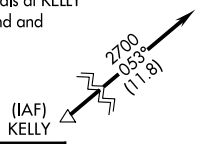
HENDRICKS COUNTY-GORDON GRAHAM FLD (2R2)

NA	Baro-VNAV NA. DME/DME RNP-0.3 NA. Use Indianapolis Intl altimeter setting. Helicopter visibility reduction below 3/4 SM NA.	MISSED APPROACH: Climb to 2700 direct GAKNE and hold.
----	---	---

AWOS-3PT 118.025	IND ASOS 134.25	INDIANAPOLIS APP CON 121.1	UNICOM 122.7 (CTAF)
----------------------------	---------------------------	--------------------------------------	-------------------------------



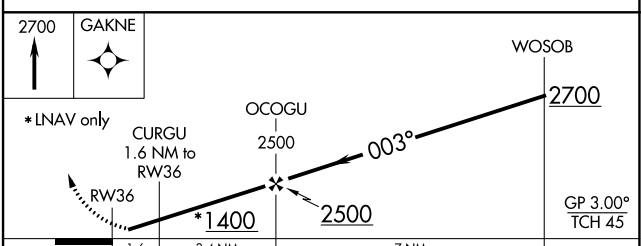
Procedure NA for arrivals at KELLY on V11 southwest bound and V12 westbound.



ELEV 898	TDZE 884
----------	----------

2002

	REIL Rwy 18 and 36 MIRL Rwy 18-36
--	--------------------------------------



CATEGORY	A	B	C	D
LPV DA	1168-7/8	284 (300-7/8)		NA
LNAV/VNAV DA	1168-7/8	284 (300-7/8)		NA
LNAV MDA	1240-1	356 (400-1)		NA
CIRCLING	1380-1 482 (500-1)	1560-1 662 (700-1)	1600-2 702 (800-2)	NA

RNAV (GPS) RWY 36

EC-2, 22 FEB 2024 to 21 MAR 2024

EC-2, 22 FEB 2024 to 21 MAR 2024