

APP CRS	Rwy Idg	<b>4300</b>
<b>103°</b>	TDZE	<b>706</b>
	Apt Elev	<b>706</b>

# RNAV (GPS) RWY 11

PADGHAM FLD (35D)

RNP APCH.

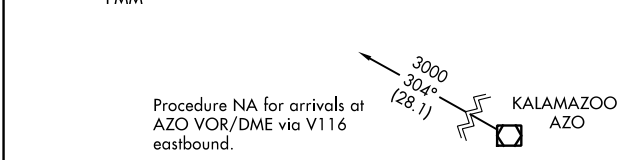
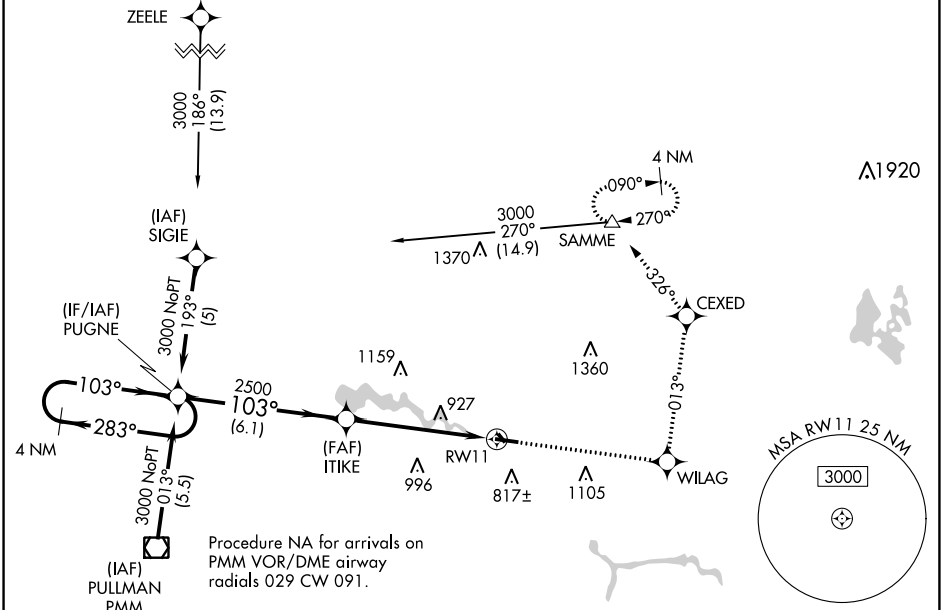
**NA** Rwy 11 helicopter visibility reduction below 3/4 SM NA. Use Holland altimeter setting, when not received use Grand Rapids altimeter setting and increase all MDAs 40 feet. Circling NA to Rwys 15 and 33. Circling Rwy 29 NA at night.

**MISSED APPROACH:** Climb to 3000 direct WILAG and left turn on track 013° to CEXED and on track 326° to SAMME and hold.

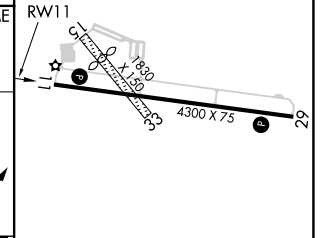
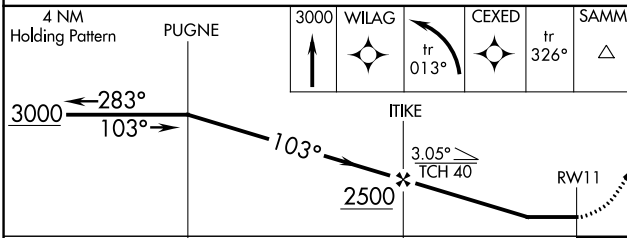
BIV ASOS  
**119.025**

GREAT LAKES APP CON \*  
**128.4 257.6**

UNICOM  
**122.8 (CTAF) 0**



ELEV	706	TDZE	706
------	-----	------	-----



CATEGORY	A	B	C	D
RNAV MDA	1220-1	514 (600-1)	1220-1½ 514 (600-1½)	NA
CIRCLING	1280-1	574 (600-1)	1460-2¼ 754 (800-2¼)	NA

REIL Rwys 11 and 29 0  
MIRL Rwy 11-29 0

EC-1, 08 SEP 2022 to 06 OCT 2022

EC-1, 08 SEP 2022 to 06 OCT 2022

APP CRS <b>283°</b>	Rwy ldg TDZE Apt Elev	<b>4300</b> <b>705</b> <b>706</b>
------------------------	-----------------------------	---

# RNAV (GPS) RWY 29

PADGHAM FLD (35D)

RNP APCH.

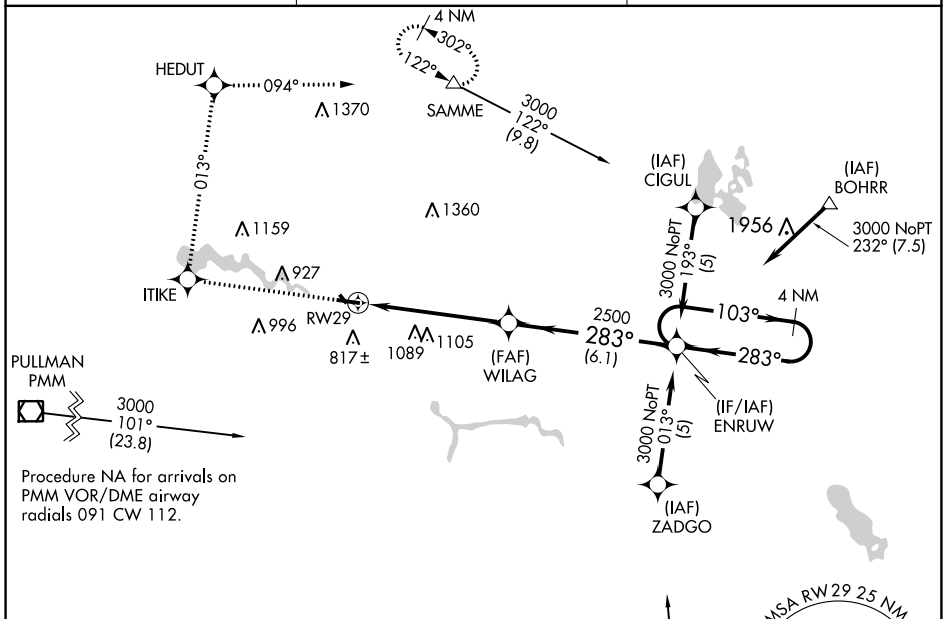
**⚠** Rwy 29 helicopter visibility reduction below 1 SM NA. Use Holland altimeter setting, when not received use Grand Rapids altimeter setting and increase all MDAs 40 feet. Circling NA to Rwy 15 and 33. Straight-in Rwy 29 NA at night, Circling Rwy 29 NA at night.

**MISSED APPROACH:** Climb to 3000 direct ITIKE and right turn on track 013° to HEDUT and on track 094° to SAMME and hold.

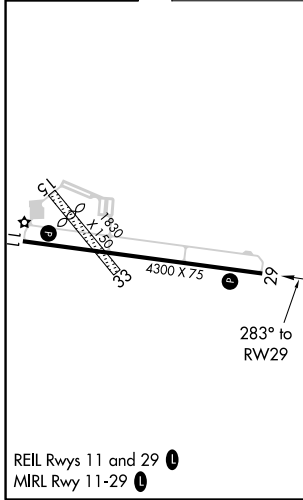
BIV ASOS  
**119.025**

GREAT LAKES APP CON \*  
**128.4 257.6**

UNICOM  
**122.8 (CTAF) 0**



ELEV	706	TDZE	705
------	-----	------	-----



3000	ITIKE	HEDUT	SAMME	ENRUW	4 NM Holding Pattern
↑	⊙	tr 013°	tr 094°	⊙	
CATEGORY	A	B	C	D	
LNAV MDA	1380-1	675 (700-1)	1380-2 675 (700-2)	NA	
CIRCLING	1380-1	674 (700-1)	1460-2¼ 754 (800-2¼)	NA	

EC-1, 08 SEP 2022 to 06 OCT 2022

EC-1, 08 SEP 2022 to 06 OCT 2022