

APP CRS	Rwy Idg	2697
140°	TDZE	762
	Apt Elev	773

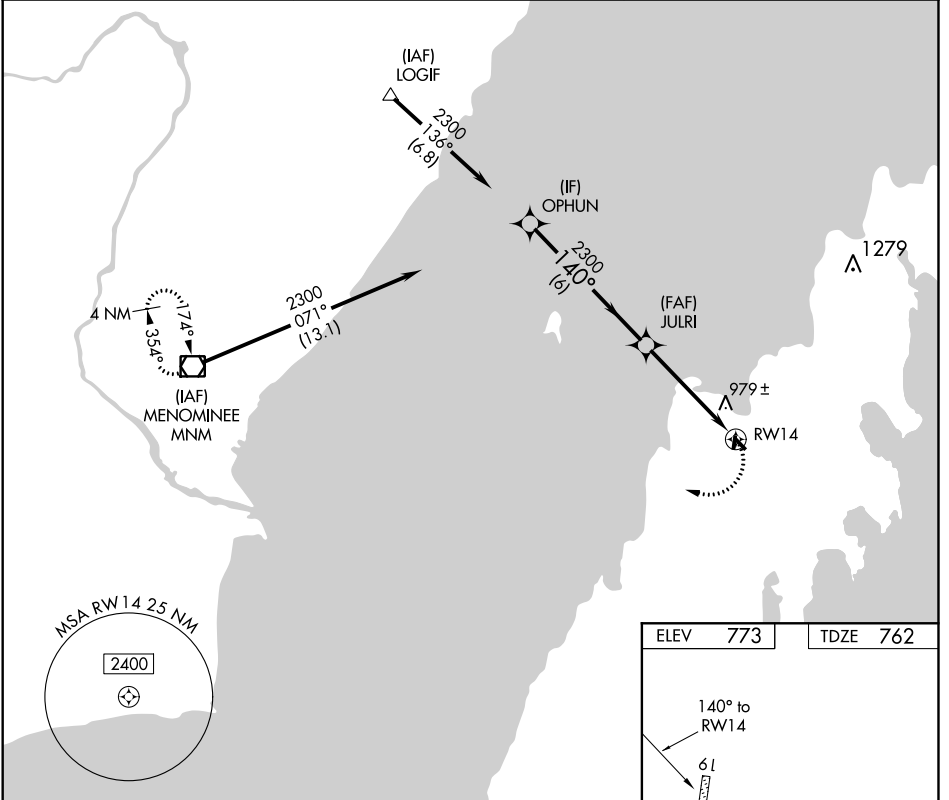
RNAV (GPS) RWY 14

EPHRAIM-GIBRALTAR (3D2)

⚠ NA DME/DME RNP-0.3 NA. Procedure NA at night. Visibility reduction by helicopters NA. Use Door County Cherryland altimeter setting; when not received, use Menominee altimeter setting and increase all MDA 20 feet.

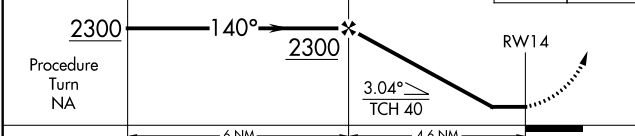
MISSED APPROACH: Climbing right turn to 3000 direct MNM VOR/DME and hold.

AWOS-3PT 124.175	GREEN BAY APP CON★ 120.3 338.2	UNICOM 123.0 (CTAF) 0
----------------------------	--	---------------------------------

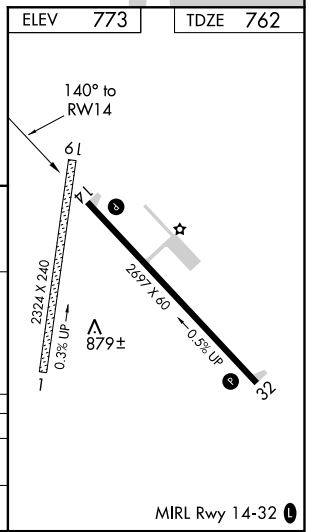


VGSI and descent angles not coincident (VGSI Angle 3.50/TCH 24).

3000 MNM



CATEGORY	A	B	C	D
LNVA MDA	1300-1	538 (600-1)	1300-1½ 538 (600-1½)	NA
CIRCLING	1340-1	567 (600-1)	1340-1½ 567 (600-1½)	NA



EC-3, 04 JAN 2018 to 01 FEB 2018

EC-3, 04 JAN 2018 to 01 FEB 2018

APP CRS	Rwy ldg	2697
320°	TDZE	762
	Apt Elev	773

RNAV (GPS) RWY 32

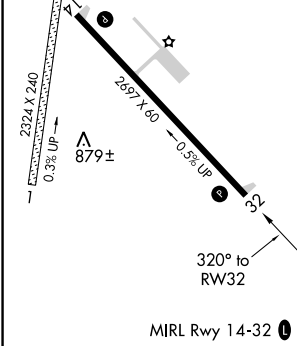
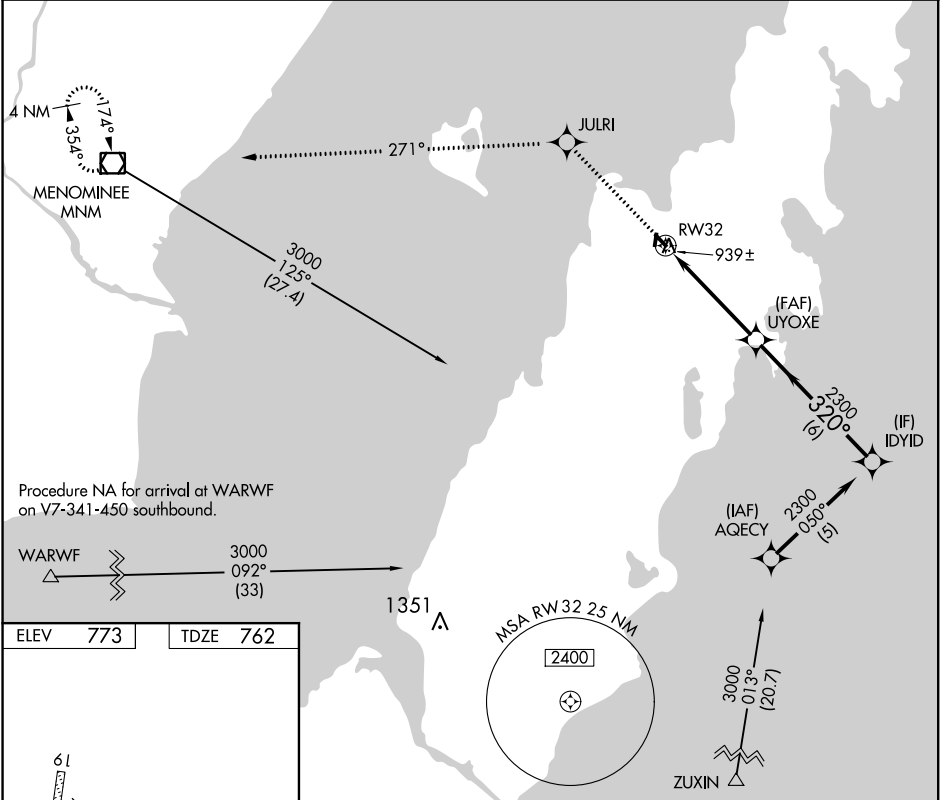
EPHRAIM-GIBRALTAR (3D2)

▼ DME/DME RNP-0.3 NA. Procedure NA at night. Visibility reduction by helicopters NA. Use Door County Cherryland altimeter setting; when not received, use Menominee altimeter setting and increase all MDA 20 feet.

▲ NA

MISSED APPROACH: Climb to 3000 direct JULRI and on track 271° to MNM VOR/DME and hold.

AWOS-3PT 124.175	GREEN BAY APP CON* 120.3 338.2	UNICOM 123.0 (CTAF) 0
----------------------------	--	---------------------------------



3000	JULRI	tr 271°	MNM	VGSI and descent angles not coincident (VGSI Angle 3.00/TCH 25). UYOXE	IDYID
↑	✧		◻		
RW32		2300		320°	
4.7 NM		6 NM		2300	
CATEGORY	A	B	C	D	
LNAV MDA	1260-1	498 (500-1)	1260-1¼ 498 (500-1¼)	NA	
CIRCLING	1340-1	567 (600-1)	1340-1½ 567 (600-1½)	NA	

EC-3, 04 JAN 2018 to 01 FEB 2018

EC-3, 04 JAN 2018 to 01 FEB 2018