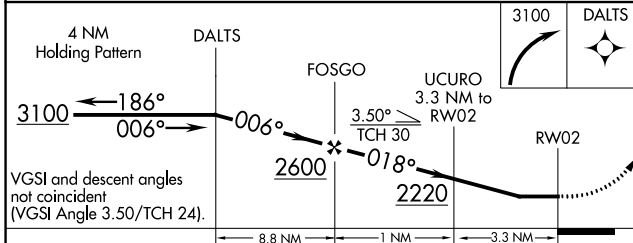
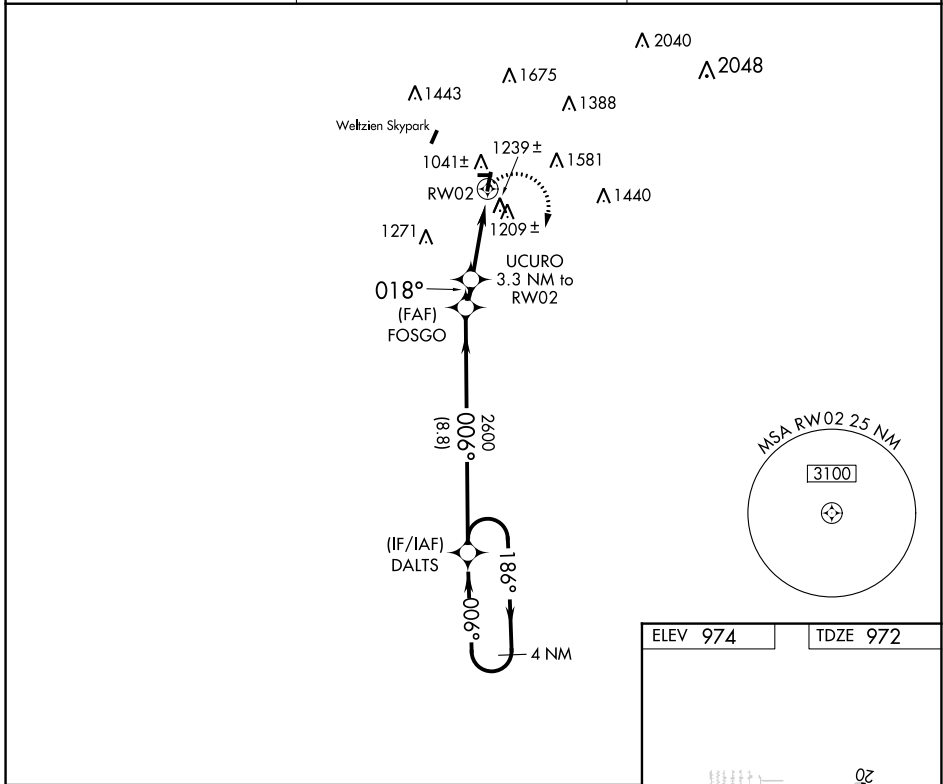


APP CRS	Rwy Idg	<b>3400</b>
<b>018°</b>	TDZE	<b>972</b>
	Apt Elev	<b>974</b>

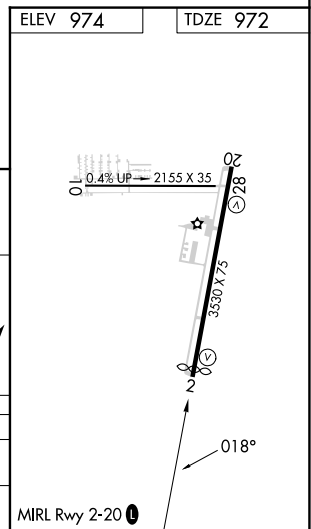
# RNAV (GPS) RWY 2

WADSWORTH MUNI (3G3)

RNP APCH.		MISSED APPROACH: Climbing right turn to 3100 direct DALTS and hold.
▽ Rwy 2 helicopter visibility reduction below 1 SM NA. Procedure NA at night. ▲ NA Circling NA west of Rwy 2-20. Use Wooster altimeter setting, when not received, use Akron-Canton Rgnl altimeter setting and increase all MDA 40 feet and LNAV visibility Cat C 1/8 SM, Circling Cat B 1/4 SM.		
BJJ ASOS <b>118.075</b>	CLEVELAND APP CON★ <b>125.5 371.875</b>	UNICOM <b>122.8 (CTAF) 0</b>



CATEGORY	A	B	C	D
LNAV MDA	1620-1	648 (700-1)	1620-1 7/8 648 (700-1 7/8)	NA
<b>C</b> CIRCLING	1660-1 686 (700-1)	1760-1 786 (800-1)	1980-3 1006 (1100-2)	NA



EC-2, 22 FEB 2024 to 21 MAR 2024

EC-2, 22 FEB 2024 to 21 MAR 2024

APP CRS <b>198°</b>	Rwy Idg TDZE Apt Elev	<b>3530</b> <b>974</b> <b>974</b>
------------------------	-----------------------------	---

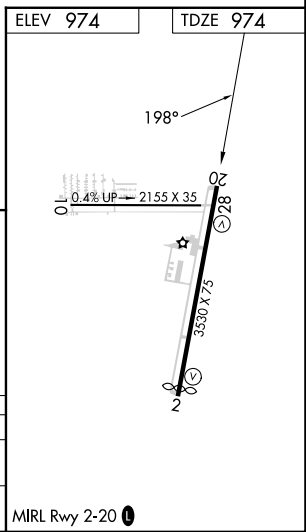
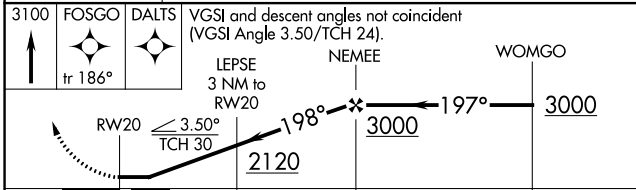
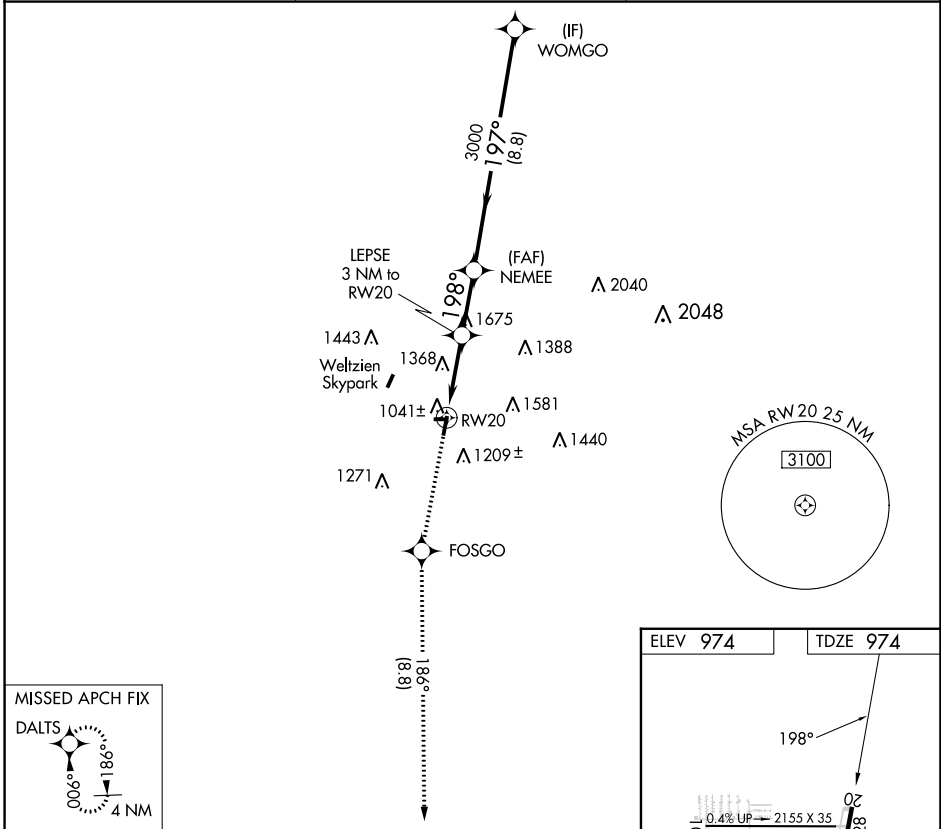
# RNAV (GPS) RWY 20

WADSWORTH MUNI (3G3)

RNP APCH.  
 ▼ Rwy 20 helicopter visibility reduction below 1 SM NA. Procedure NA at night.  
 ▲ NA Circling NA west of Rwy 2-20. Use Wooster altimeter setting, when not received, use Akron-Canton Rgnl altimeter setting and increase all MDA 40 feet and LNAV visibility Cat C ½ SM.

MISSED APPROACH: Climb to 3100 direct FOSGO and on track 186° to DALTS and hold.

BJJ ASOS <b>118.075</b>	CLEVELAND APP CON ★ <b>125.5 371.875</b>	UNICOM <b>122.8 (CTAF) 0</b>
----------------------------	---	---------------------------------



CATEGORY	A	B	C	D
LNAV MDA	1720-1 746 (800-1)	1720-1¼ 746 (800-1¼)	1720-2 746 (800-2)	NA
CIRCLING	1720-1 746 (800-1)	1760-1¼ 786 (800-1¼)	1980-3 1006 (1100-3)	NA

EC-2, 22 FEB 2024 to 21 MAR 2024

EC-2, 22 FEB 2024 to 21 MAR 2024