

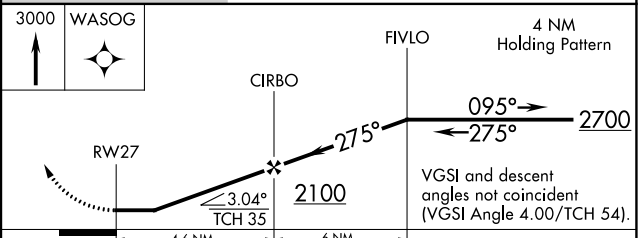
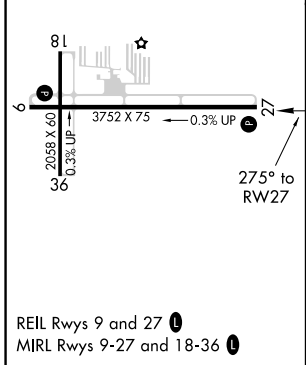
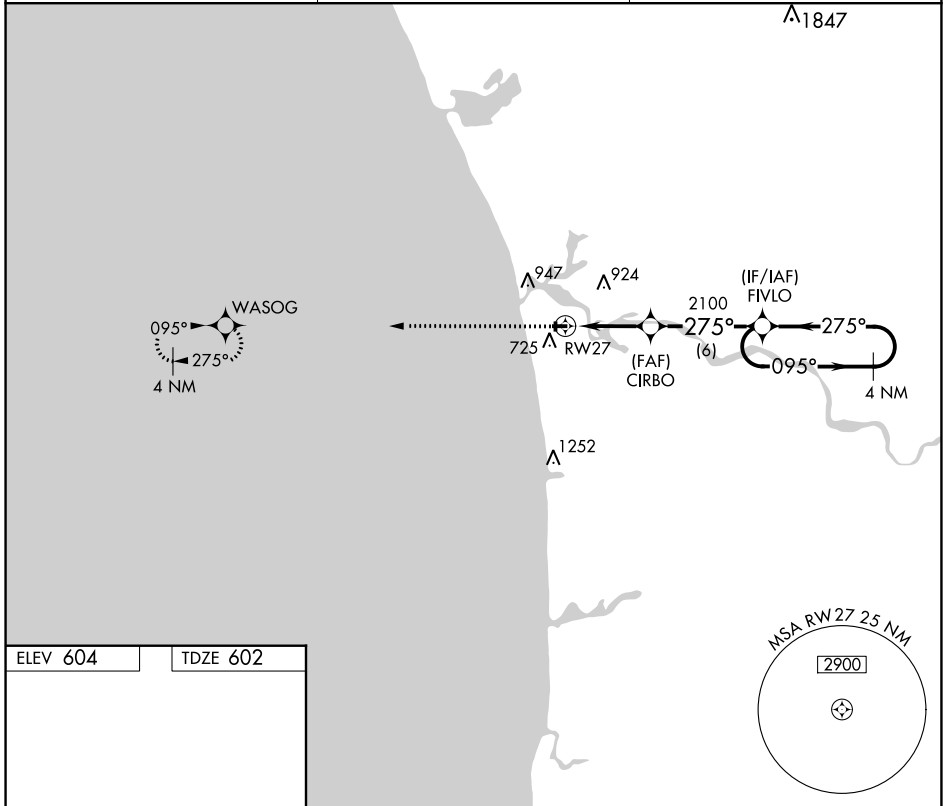
| | |
|------------------------|------------------------|
| APP CRS 275° | Rwy Idg 3752 |
| | TDZE 602 |
| | Apt Elev 604 |

RNAV (GPS) RWY 27

GRAND HAVEN MEML AIRPARK (3GM)

| | | |
|------------------------|--|--|
| RNP APCH. ▼ ▲ NA | Use Muskegon altimeter setting. Rwy 27 helicopter visibility reduction below 3/4 SM NA. Circling Rwy 18, 36 NA at night. | MISSED APPROACH: Climb to 3000 direct WASOG and hold. |
|------------------------|--|--|

| | | |
|--------------------------|---|---------------------------------|
| MKG ASOS 124.3 | GREAT LAKES APP CON* 133.825 290.35 | UNICOM 122.7 (CTAF) 0 |
|--------------------------|---|---------------------------------|



| | | | | |
|----------|--------------------|-------------|-----------------------|----|
| CATEGORY | A | B | C | D |
| LNAV MDA | 1000-1 398 (400-1) | | | NA |
| CIRCLING | 1240-1 | 636 (700-1) | 1320-2 716 (800-2) | NA |

EC-1, 19 MAY 2022 to 16 JUN 2022

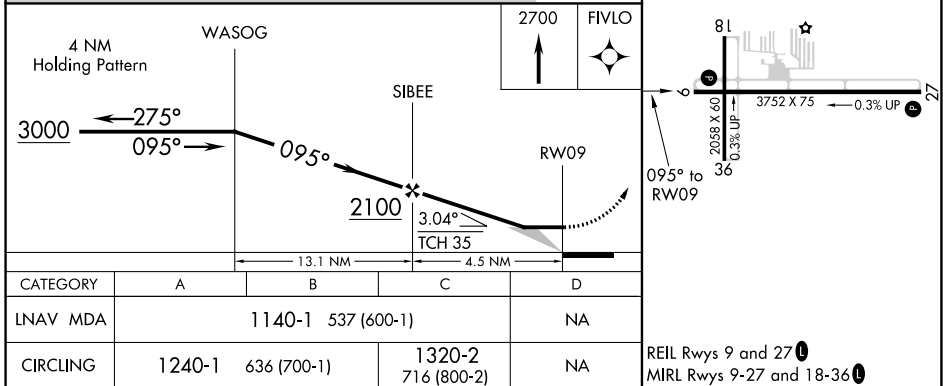
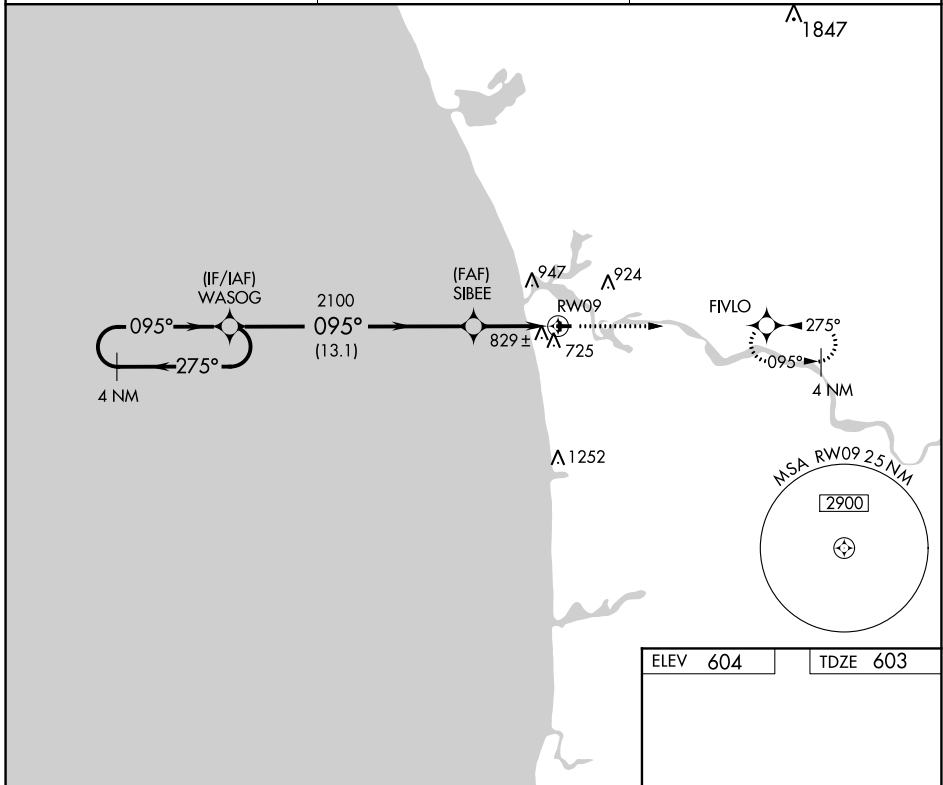
EC-1, 19 MAY 2022 to 16 JUN 2022

| | |
|------------------------|------------------------|
| APP CRS 095° | Rwy Idg 3752 |
| | TDZE 603 |
| | Apt Elev 604 |

RNAV (GPS) RWY 9

GRAND HAVEN MEML AIRPARK (3GM)

| | | |
|--------------------------|--|---|
| RNP APCH. | | MISSED APPROACH: Climb to 2700 direct FIVLO and hold. |
| ▼ ▲ NA | Use Muskegon altimeter setting. Circling Rwy 18, 36 NA at night. Rwy 9 helicopter visibility reduction below 3/4 SM NA. | |
| MKG ASOS 124.3 | GREAT LAKES APP CON* 133.825 290.35 | UNICOM 122.7 (CTAF) 0 |



EC-1, 19 MAY 2022 to 16 JUN 2022

EC-1, 19 MAY 2022 to 16 JUN 2022