

APP CRS	Rwy Idg	3299
083°	TDZE	964
	Apt Elev	967

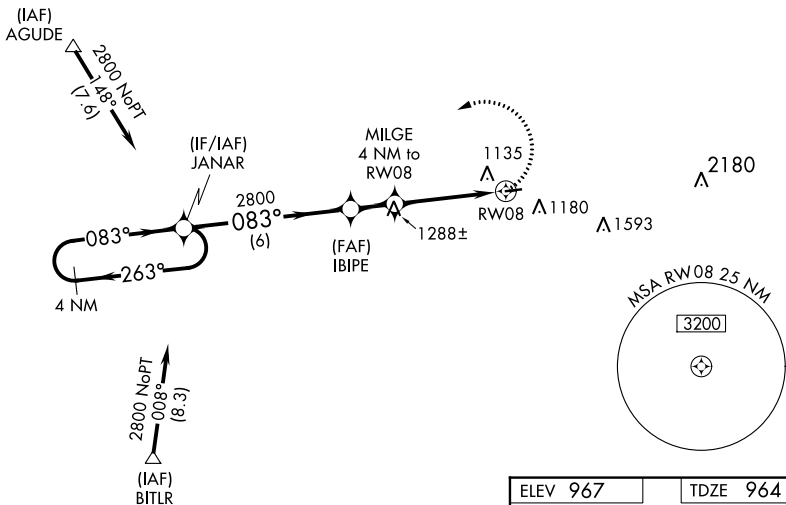
RNAV (GPS) RWY 8

BOYCEVILLE MUNI (3T3)

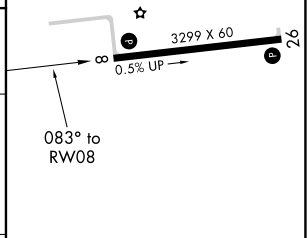
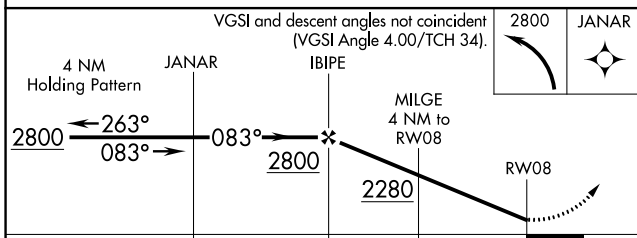
RNP APCH.	MISSED APPROACH: Climbing left turn to 2800 direct JANAR and hold.
▼ Use New Richmond Rgnl altimeter setting. ▲ NA When VGSI inop, procedure NA at night. Helicopter visibility reduction below 1 SM NA.	

RNH AWOS-3 120.0	MINNEAPOLIS CENTER 125.3 335.6	UNICOM 122.8 (CTAF) 0
----------------------------	--	---------------------------------

Procedure NA for arrivals at AGUDE via V78 westbound.



ELEV 967	TDZE 964
----------	----------



CATEGORY	A	B	C	D
LNAV MDA	1580-1	616 (700-1)	1580-1¾ 616 (700-1¾)	NA

MIRL Rwy 8-26 0
REIL Rwy 26 0

EC-3, 22 FEB 2024 to 21 MAR 2024

EC-3, 22 FEB 2024 to 21 MAR 2024