

APP CRS <b>151°</b>	Rwy Idg <b>3800</b>
	TDZE <b>742</b>
	Apt Elev <b>750</b>

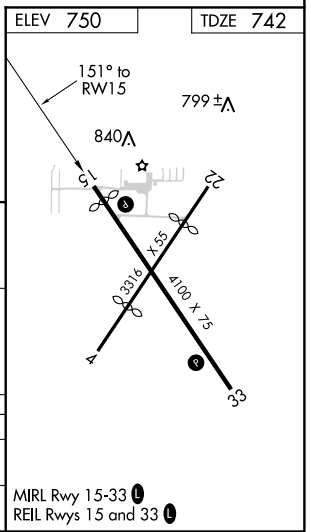
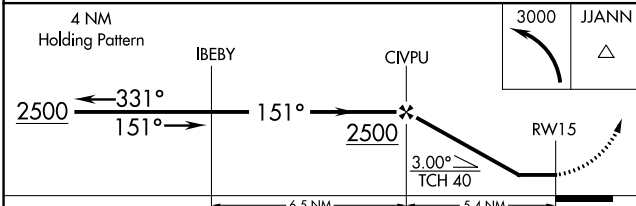
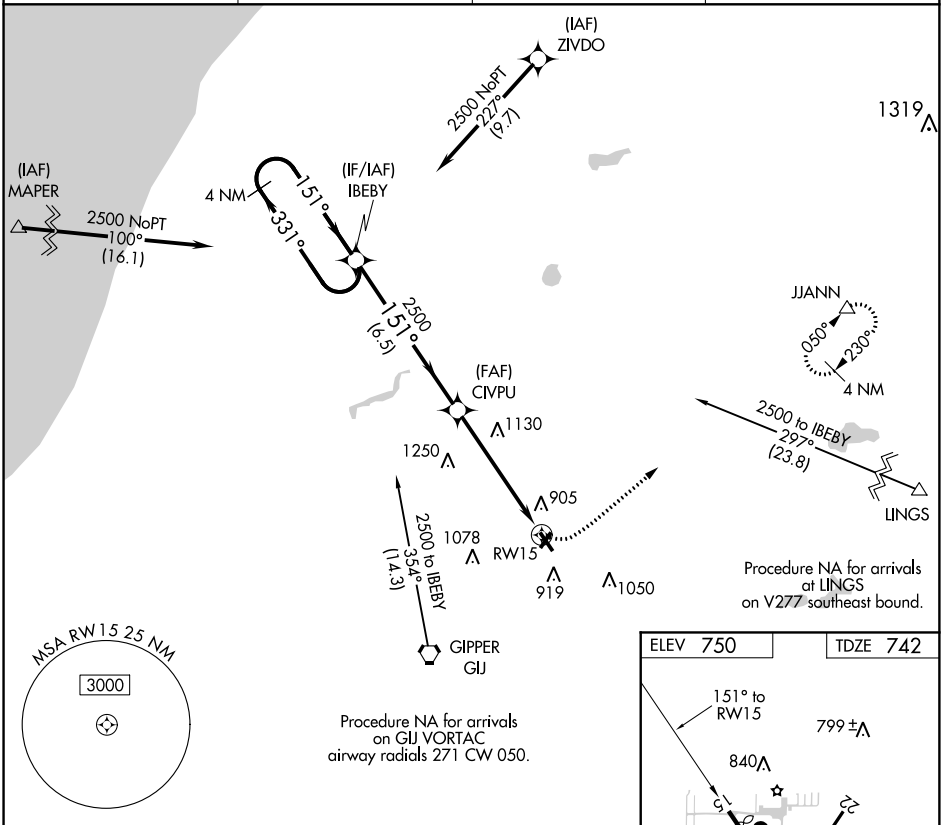
# RNAV (GPS) RWY 15

JERRY TYLER MEMORIAL (3TR)

**NA** Use South Bend altimeter setting; when not received use Elkhart altimeter setting and increase all MDA 20 feet. DME/DME RNP-0.3 NA. Procedure NA at night. Visibility reduction by helicopters NA.

**MISSED APPROACH:** Climbing left turn to 3000 direct JJANN and hold.

SOUTH BEND ASOS <b>120.675</b>	SOUTH BEND APP CON ★ <b>118.55 257.8</b>	GCO <b>121.725</b>	UNICOM <b>122.8 (CTAF) 0</b>
-----------------------------------	---	-----------------------	---------------------------------



CATEGORY	A	B	C	D
LNVA MDA	1460-1 718 (800-1)		1460-2 718 (800-2)	NA
CIRCLING	1460-1 710 (800-1)		1460-2 710 (800-2)	NA

EC-1, 08 NOV 2018 to 06 DEC 2018

EC-1, 08 NOV 2018 to 06 DEC 2018

APP CRS <b>331°</b>	Rwy Idg <b>4100</b>
	TDZE <b>750</b>
	Apt Elev <b>750</b>

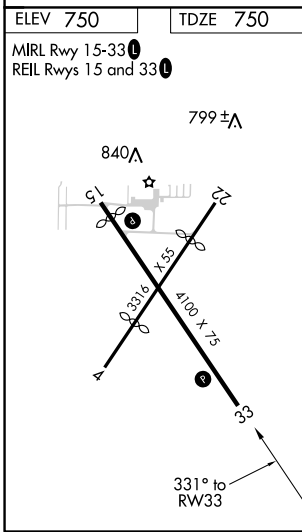
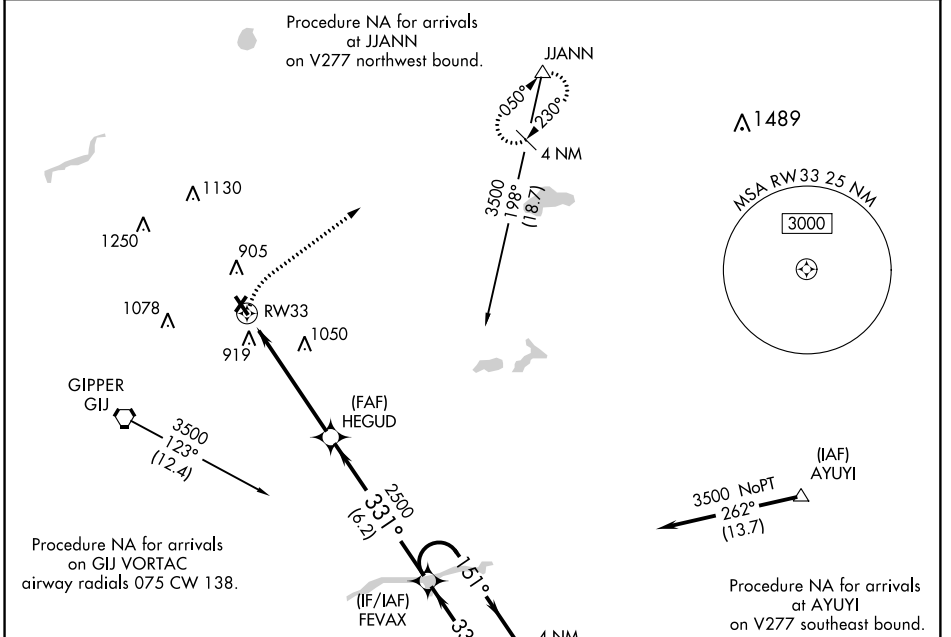
# RNAV (GPS) RWY 33

JERRY TYLER MEMORIAL (3TR)

**⚠** Use South Bend altimeter setting; when not received, use Elkhart altimeter setting and increase all MDA 20 feet and all Cat C visibility 1/8 mile. DME/DME RNP -0.3 NA. Procedure NA at night. Helicopter visibility reduction below 1 SM NA.

**⚠** NA MISSED APPROACH: Climbing right turn to 3000 direct JJANN and hold.

SOUTH BEND ASOS <b>120.675</b>	SOUTH BEND APP CON* <b>118.55 257.8</b>	GND CON <b>121.725</b>	UNICOM <b>122.8 (CTAF) 0</b>
-----------------------------------	--	---------------------------	---------------------------------



3000	JJANN	4 NM	HEGUD	FEVAX	4 NM	Holding Pattern
5.4 NM	6.2 NM					
CATEGORY	A	B	C	D		
LNAV MDA	1320-1	570 (600-1)	1320-1½ 570 (600-1½)	NA		
CIRCLING	1320-1	570 (600-1)	1320-1½ 570 (600-1½)	NA		

EC-1, 08 NOV 2018 to 06 DEC 2018

EC-1, 08 NOV 2018 to 06 DEC 2018

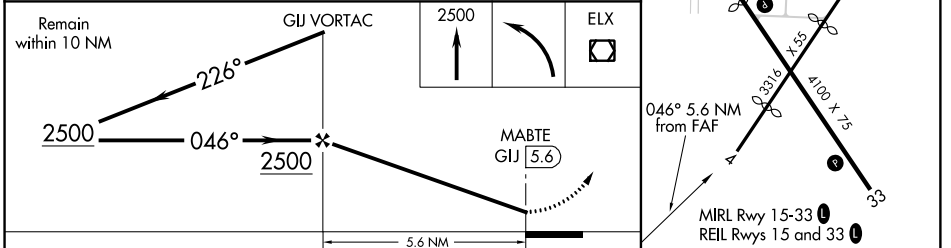
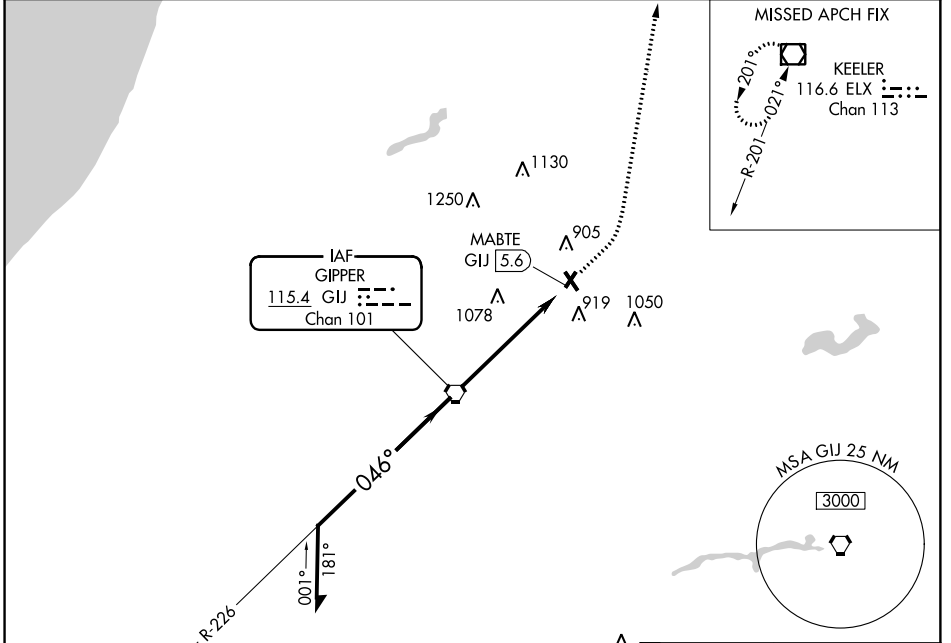
VORTAC GJ <b>115.4</b> Chan 101	APP CRS <b>046°</b>	Rwy Idg TDZE Apt Elev	<b>N/A</b> <b>N/A</b> <b>750</b>
---------------------------------------	------------------------	-----------------------------	--

**VOR-A**  
JERRY TYLER MEMORIAL (3TR)

⚠ NA Use South Bend altimeter setting; when not received, use Elkhart altimeter setting and increase all MDA 20 feet. Procedure NA at night. Visibility reduction by helicopters NA.

⚠ MISSED APPROACH: Climb to 2500 then left turn direct ELX VOR/DME and hold.

SOUTH BEND ASOS <b>120.675</b>	SOUTH BEND APP CON * <b>118.55 257.8</b>	GCO <b>121.725</b>	UNICOM <b>122.8</b> (CTAF) <span>⓪</span>
-----------------------------------	---	-----------------------	--



CATEGORY	A	B	C	D	FAF to MAP 5.6 NM					
CIRCLING	1300-1	550 (600-1)	1300-1½ 550 (600-1½)	NA	Knots	60	90	120	150	180
					Min:Sec	5:36	3:44	2:48	2:14	1:52

EC-1, 08 NOV 2018 to 06 DEC 2018

EC-1, 08 NOV 2018 to 06 DEC 2018