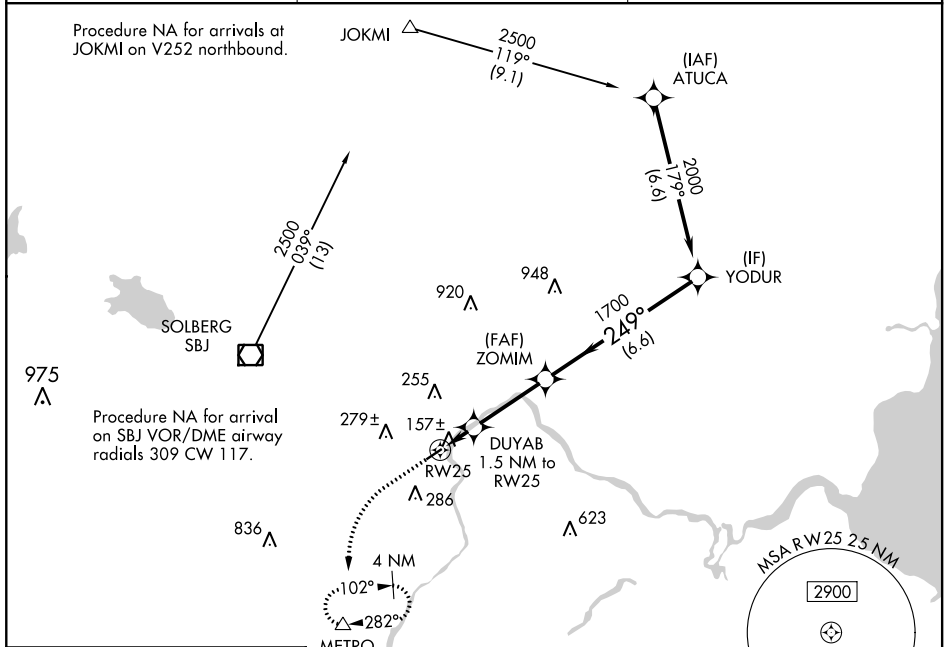


WAAS CH <b>53424</b> <b>W25A</b>	APP CRS <b>249°</b>	Rwy Idg <b>3245</b> TDZE <b>85</b> Apt Elev <b>86</b>
--	------------------------	---

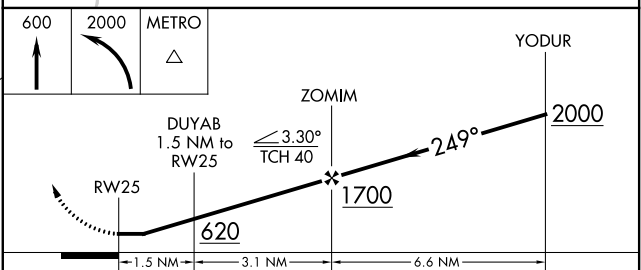
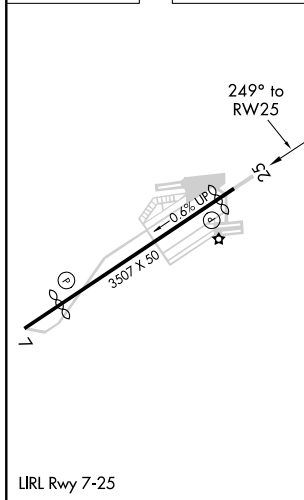
# RNAV (GPS) RWY 25

CENTRAL JERSEY RGNL (47N)

RNP APCH.		MISSED APPROACH: Climb to 600 then climbing left turn to 2000 direct METRO and hold.
<p>Procedure NA at night. Rwy 25 helicopter visibility reduction below 1 SM NA.                  Use Trenton Mercer altimeter setting.</p>		
TTN ASOS <b>126.775</b>	NEW YORK APP CON <b>132.8 379.9</b>	UNICOM <b>122.7 (CTAF)</b>



ELEV 86	TDZE 85
---------	---------



CATEGORY	A	B	C	D
LP MDA	480-1	395 (400-1)	480-1 $\frac{1}{8}$ 395 (400-1 $\frac{1}{8}$ )	NA
LNAV MDA	520-1	435 (500-1)	520-1 $\frac{1}{4}$ 435 (500-1 $\frac{1}{4}$ )	NA
<b>C</b> CIRCLING	620-1 534 (600-1)	660-1 574 (600-1)	660-1 $\frac{1}{2}$ 574 (600-1 $\frac{1}{2}$ )	NA

NE-2, 27 JAN 2022 to 24 FEB 2022

NE-2, 27 JAN 2022 to 24 FEB 2022

APP CRS	Rwy Idg	<b>2927</b>
<b>069°</b>	TDZE	<b>82</b>
	Apt Elev	<b>86</b>

# RNAV (GPS) RWY 7

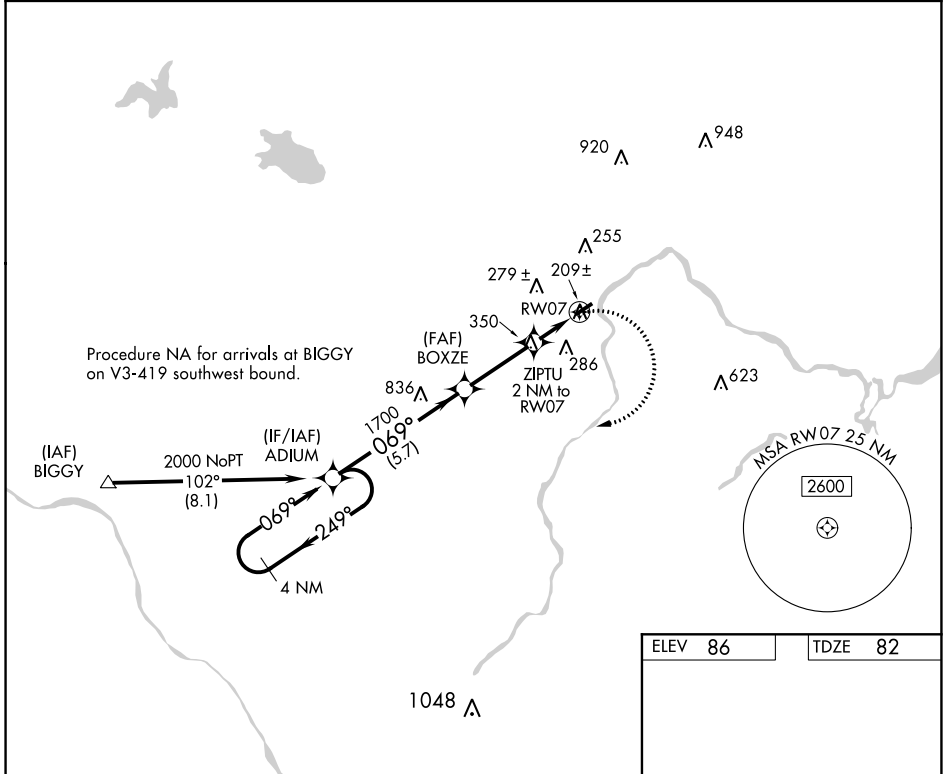
CENTRAL JERSEY RGNL (47N)

RNP APCH.

**NA** Procedure NA at night. Use Trenton altimeter setting; when not received, use Newark altimeter setting, and increase all MDAs 20 feet. Rwy 7 helicopter visibility reduction below 1 SM NA.

MISSED APPROACH: Climbing right turn to 2000 direct ADIUM and hold.

TTN ASOS <b>126.775</b>	NEW YORK APP CON <b>132.8 379.9</b>	UNICOM <b>122.7 (CTAF)</b>
----------------------------	--	-------------------------------



NE-2, 27 JAN 2022 to 24 FEB 2022

NE-2, 27 JAN 2022 to 24 FEB 2022

ELEV	<b>86</b>	TDZE	<b>82</b>
------	-----------	------	-----------

LIRL Rwy 7-25

4 NM Holding Pattern	VGSIs and descent angles not coincident (VGSIs Angle 3.40/TCH 36).			2000	ADIUM
ADIUM		BOXZE	ZIPTU 2 NM to RWY 7	RWY 7	
2000		1700	740		
5.7 NM		3 NM	2 NM		
CATEGORY	A	B	C	D	
LNVA MDA	580-1	498 (500-1)	580-1 3/8 498 (500-1 3/8)	NA	
CIRCLING	620-1 534 (600-1)	700-1 614 (700-1)	700-1 3/4 614 (700-1 3/4)	NA	