

NDB RPF 332	APP CRS 359°	Rwy Idg TDZE Apt Elev	4000 248 248
-----------------------	------------------------	-----------------------------	---

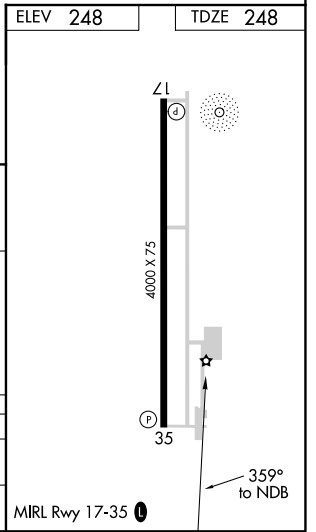
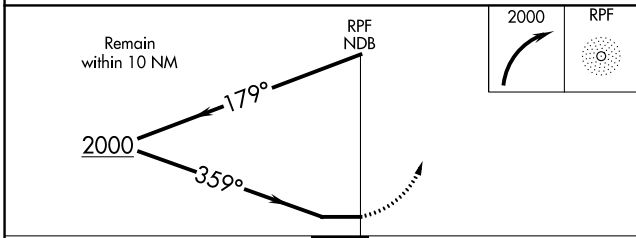
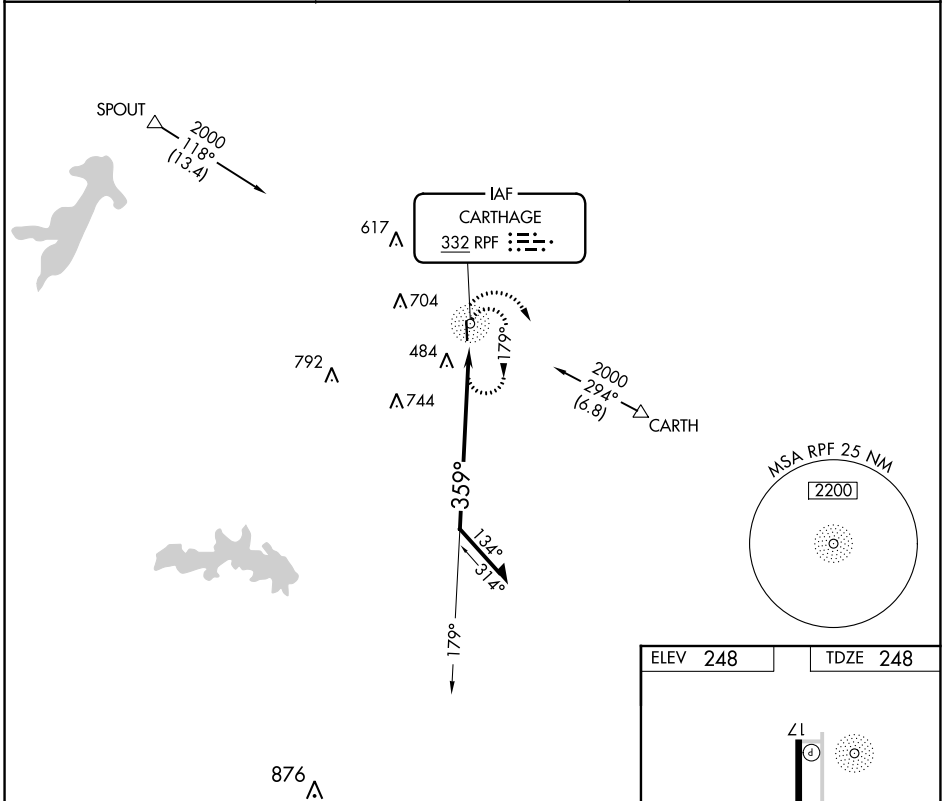
NDB RWY 35

PANOLA COUNTY-SHARPE FIELD (4F2)

NA Use Shreveport Regional altimeter setting; when not received use East Texas Rgnl altimeter setting. Rwy 35 helicopter visibility reduction below ¼ SM NA. Rwy 17 helicopter visibility reduction below 1 SM NA. Circling Rwy 17 NA at night.

MISSED APPROACH: Climbing right turn to 2000 in RPF NDB holding pattern.

AWOS-3PT 121.125	SHREVEPORT APP CON * 119.9 335.55	UNICOM 122.8 (CTAF)
----------------------------	---	-------------------------------



CATEGORY	A	B	C	D
S-35	1000-1 752 (800-1)	1000-1¼ 752 (800-1¼)	1000-2¼ 752 (800-2¼)	NA
CIRCLING	1000-1 752 (800-1)	1000-1¼ 752 (800-1¼)	1000-2¼ 752 (800-2¼)	NA

SC-2, 22 APR 2021 to 20 MAY 2021

SC-2, 22 APR 2021 to 20 MAY 2021

APP CRS	Rwy Idg	4000
174°	TDZE	247
	Apt Elev	248

RNAV (GPS) RWY 17

PANOLA COUNTY-SHARPE FIELD (4F2)

RNP APCH.

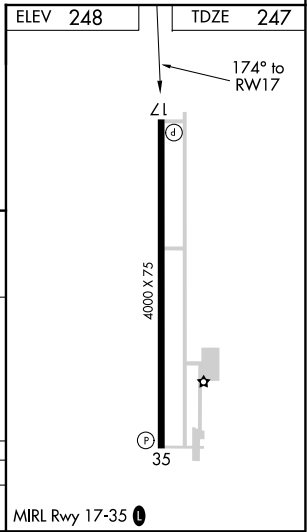
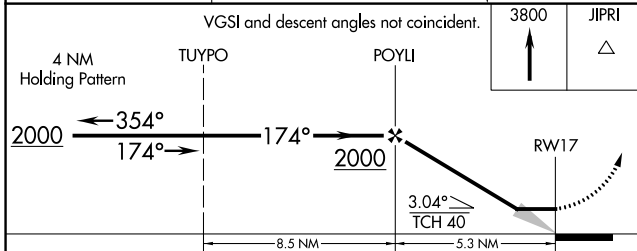
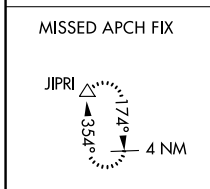
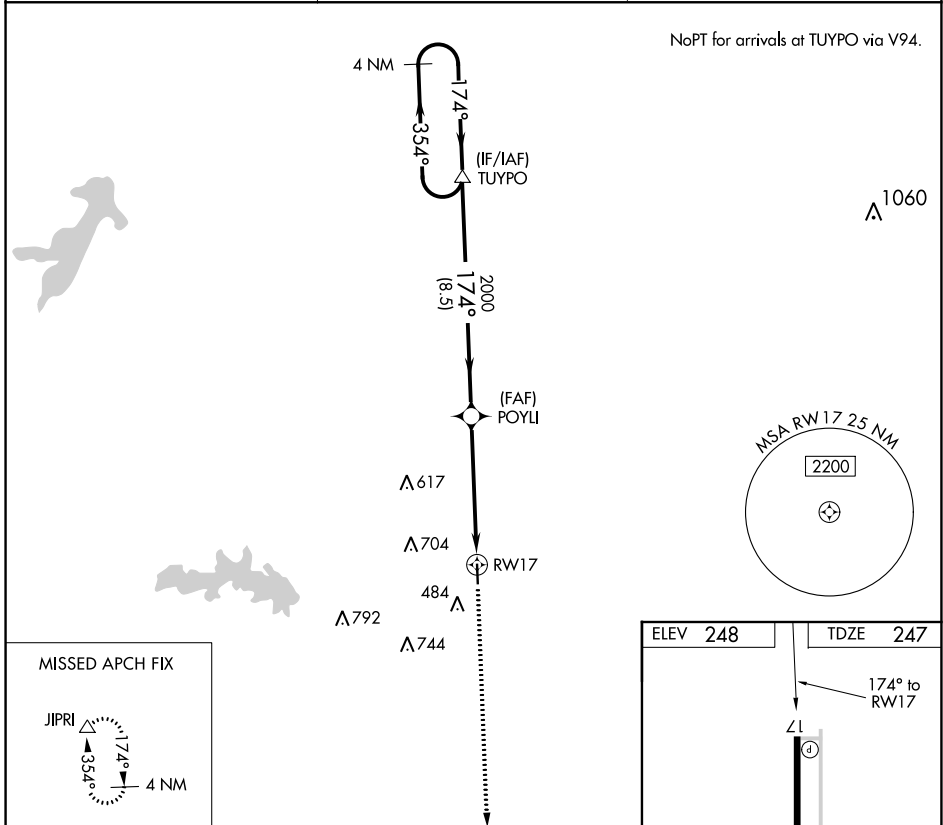
NA Use Shreveport Rgnl altimeter setting; when not received use East Texas Rgnl altimeter setting. Procedure NA at night. Rwy 17 helicopter visibility reduction below 1 SM NA.

MISSED APPROACH: Climb to 3800 direct JIPRI and hold, continue climb-in-hold to 3800.

AWOS-3PT
121.125

SHREVEPORT APP CON *
119.9 335.55

UNICOM
122.8 (CTAF)



CATEGORY	A	B	C	D
LNAV MDA	760-1	513 (600-1)	760-1½ 513 (600-1½)	NA

SC-2, 22 APR 2021 to 20 MAY 2021

SC-2, 22 APR 2021 to 20 MAY 2021

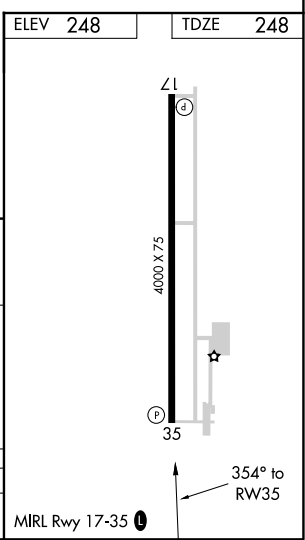
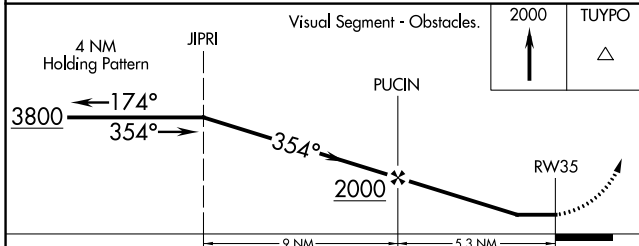
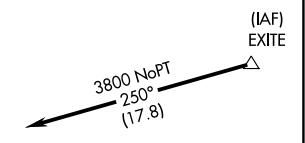
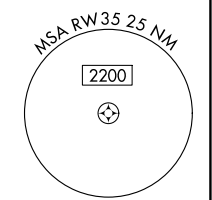
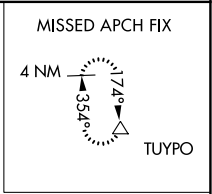
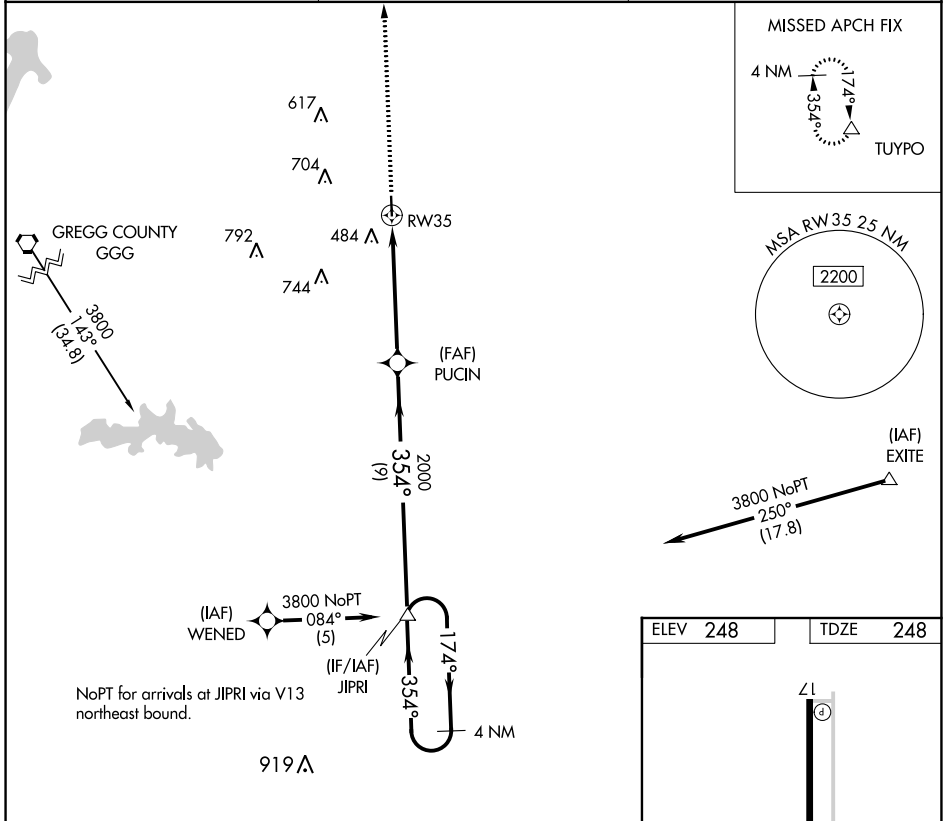
APP CRS	Rwy Idg	4000
354°	TDZE	248
	Apt Elev	248

RNAV (GPS) RWY 35

PANOLA COUNTY-SHARPE FIELD (4F2)

RNP APCH.	MISSED APPROACH: Climb to 2000 direct TUYPO and hold.
NA Rwy 35 helicopter visibility reduction below 3/4 SM NA. Use Shreveport Regional altimeter setting; when not received use East Texas Regional altimeter setting.	

AWOS-3PT 121.125	SHREVEPORT APP CON * 119.9 335.55	UNICOM 122.8 (CTAF) 0
----------------------------	---	---------------------------------



CATEGORY	A	B	C	D
LNAV MDA	840-1	592 (600-1)	840-1½ 592 (600-1½)	NA

SC-2, 22 APR 2021 to 20 MAY 2021

SC-2, 22 APR 2021 to 20 MAY 2021