

NC-1, 22 FEB 2024 to 21 MAR 2024

DEPARTURE ROUTE DESCRIPTION

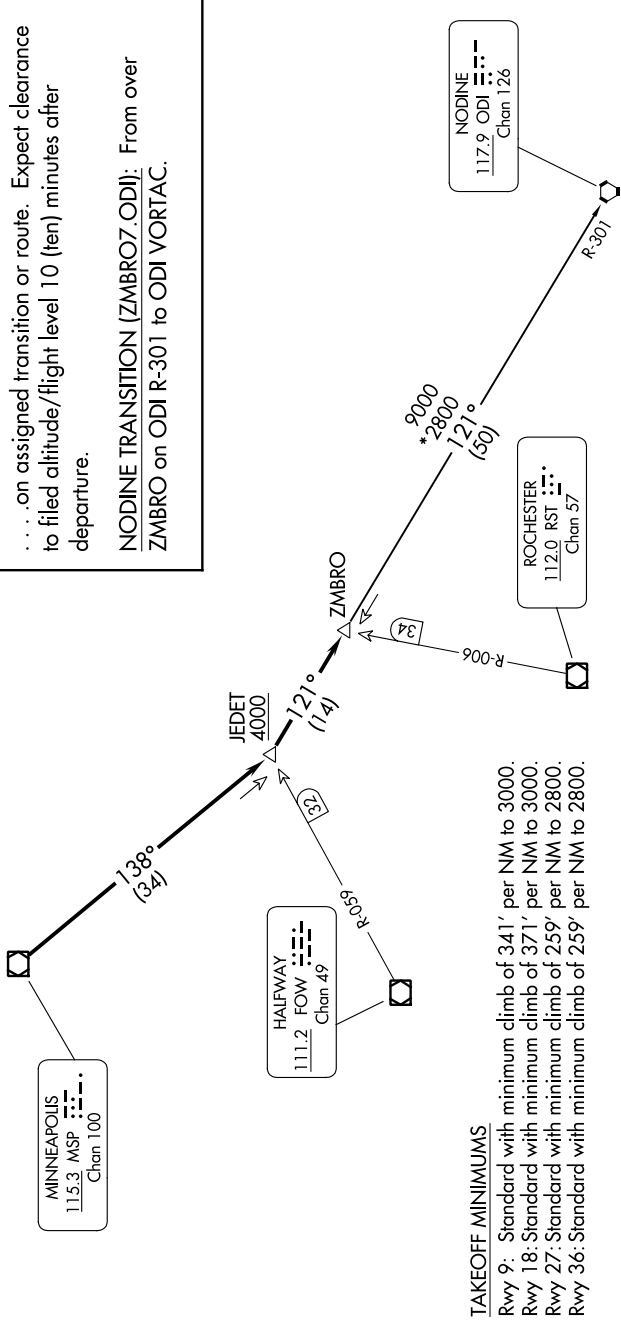
TAKEOFF ALL RUNWAYS: Fly assigned heading and altitude for RADAR vectors to MSP VOR/DME then on MSP R-138 to cross JEDET INT/MSP 34 DME, at or above 4000; then on ODI R-301 to ZMBRO INT/ODI 50 DME, thence

. . . . on assigned transition or route. Expect clearance to filed altitude/flight level 10 (ten) minutes after departure.

NODINE TRANSITION (ZMBRO7.ODI): From over ZMBRO on ODI R-301 to ODI VORTAC.

**TOP ALTITUDE:
(JETS) 7000/
(PROPS) 5000**

MINNEAPOLIS DEP CON
126.5 335.65
ATIS
120.625
CLNC DEL
121.3
CLNC DEL
121.85 (when twr closed)
ANOKA TOWER★
132.4



TAKEOFF MINIMUMS

Rwy 9: Standard with minimum climb of 341' per NM to 3000.
Rwy 18: Standard with minimum climb of 371' per NM to 3000.
Rwy 27: Standard with minimum climb of 259' per NM to 2800.
Rwy 36: Standard with minimum climb of 259' per NM to 2800.

NOTE: RADAR required.
NOTE: Chart not to scale.

NC-1, 22 FEB 2024 to 21 MAR 2024