

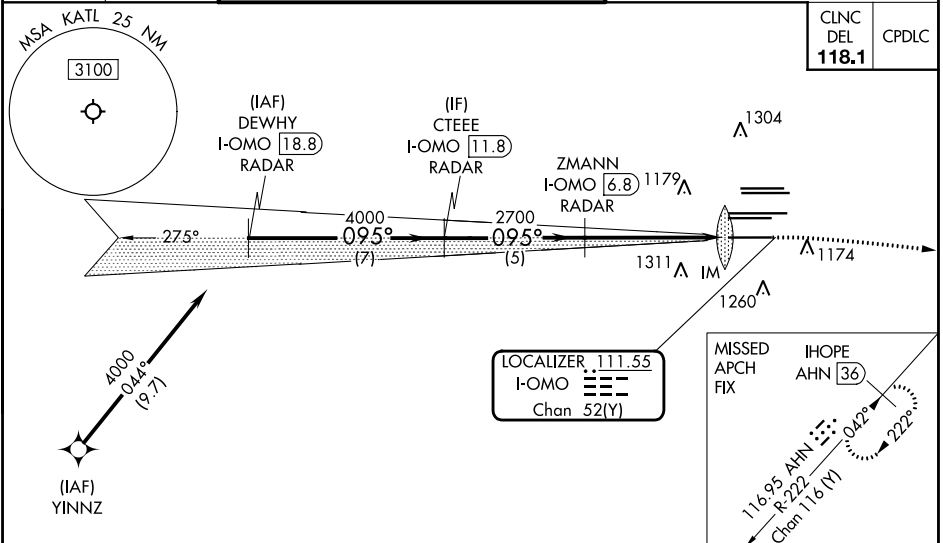
# ILS PRM RWY 10 (SA CAT I) (CLOSE PARALLEL)

HARTSFIELD-JACKSON ATLANTA INTL (ATL)

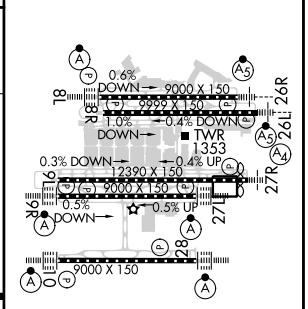
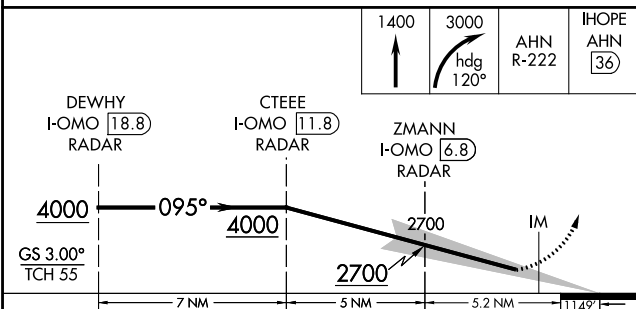
LOC/DME I-OMO <b>111.55</b> Chan <b>52 (Y)</b>	APP CRS <b>095°</b>	Rwy Idg <b>9000</b> TDZE <b>1000</b> Apt Elev <b>1026</b>
--	------------------------	---

DME or RADAR required. RNP APCH - GPS from YINNZ.	ALS F-2 	MISSED APPROACH: Climb to 1400 then climbing right turn to 3000 on heading 120° and AHN R-222 to IHOPE/AHN 36 DME and hold.
<p>Simultaneous approach authorized. Procedure NA when glide slope not available (ILS procedures only). Dual VHF Comm required. See additional requirements on AAUP. Requires special OPSPEC, MSPEC, or LOA approval and use of HUD to DH.</p>		

D-ATIS ARR <b>119.65</b> DEP <b>125.55</b>	ATLANTA APP CON <b>127.9 379.9</b>	ATLANTA TOWER 8L-26R 8R-26L 9L-27R 9R-27L <b>119.1 125.325 123.85 119.3 119.5 254.4</b> <b>PRM 133.425</b>	ALL 10-28 RWYS <b>119.5 254.4</b>	GND CON (8L-26R,8R-26L) (9L-27R,9R-27L) 10-28 <b>121.9 121.75 121.65 254.4</b>	ALL RWYS <b>254.4</b>
--	--	---	---	--	-----------------------------

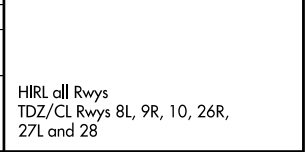


ELEV 1026	<b>D</b> TDZE 1000
-----------	--------------------



CATEGORY	A	B	C	D
S-ILS 10	RA 180/14 150 DA 1150			

**SA CATEGORY I ILS - SPECIAL AIRCREW & AIRCRAFT CERTIFICATION REQUIRED**



HIRL all Rwys  
TDZ/CL Rwys 8L, 9R, 10, 26R,  
27L and 28