

ATLANTA, GEORGIA

AL-26 (FAA)

23334

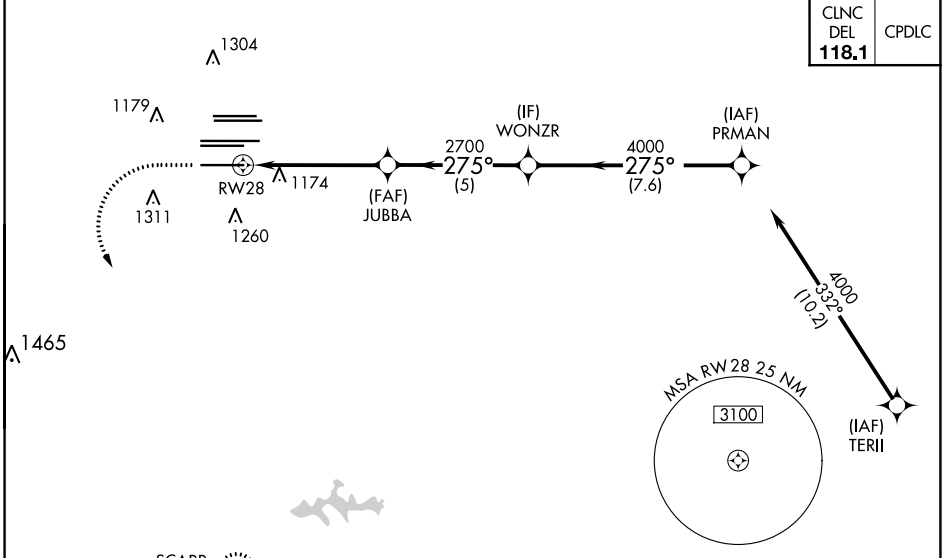
# RNAV (GPS) PRM Y RWY 28 (SIMULTANEOUS CLOSE PARALLEL) HARTSFIELD-JACKSON ATLANTA INTL (ATL)

WAAS CH <b>61299</b> <b>W28A</b>	APP CRS <b>275°</b>	Rwy Idg TDZE <b>998</b> Apt Elev <b>1026</b>	<b>9000</b>
--	------------------------	--	-------------

**▼** For uncompensated Baro-VNAV systems, LNAV/VNAV NA below -7°C (20°F) or above 54°C (130°F). DME/DME RNP-0.3 NA. Simultaneous close parallel approach authorized with ILS PRM and RNAV PRM Rwy 26R or 26L or 27R or 27L, or Rwy 26R and 27R, or Rwy 26R and 27L, or Rwy 26L and 27R, or Rwy 26L and 27L. Use of FD or AP providing RNAV track guidance required during simultaneous operations. Dual VHF Comm required. See additional requirements on AAUP.

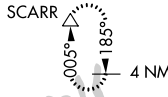
ALSF-2  
MISSED APPROACH: Climb to 1500 then climbing left turn to 3000 direct SCARR and hold.

D-ATIS ARR <b>119.65</b> DEP <b>125.55</b>	ATLANTA APP CON <b>127.9 379.9</b>	ATLANTA TOWER 8L-26R 8R-26L 9L-27R 9R-27L 10-28 RWYS <b>119.1 125.325 123.85 119.3 119.5 254.4</b> PRM <b>133.425</b>	ALL RWYS <b>121.9 121.75 121.65 254.4</b>	GND CON 10-28 RWYS <b>121.75 121.65 254.4</b>
--	--	--	--	---



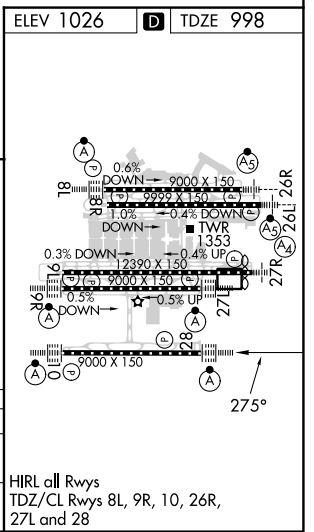
SE-4, 22 FEB 2024 to 21 MAR 2024

SE-4, 22 FEB 2024 to 21 MAR 2024



**RADAR REQUIRED**

ELEV 1026	<b>D</b> TDZE 998			
1500	3000	SCARR		
↑	↙	△		
<p>WONZR PRMAN</p> <p>JUBBA 2700 4000 275° 4000</p> <p>RW28 2700</p> <p>5.2 NM 5 NM 7.6 NM</p> <p>GP 3.00° TCH 57'</p>				
CATEGORY	A	B	C	D
LPV DA	1198/18		200 (200-½)	
LNAV/VNAV DA	1250/24		252 (300-½)	



ATLANTA, GEORGIA 33°38'N-84°26'W HARTSFIELD-JACKSON ATLANTA INTL (ATL)  
Orig-A 12OCT17

# RNAV (GPS) PRM Y RWY 28 (SIMULTANEOUS CLOSE PARALLEL)