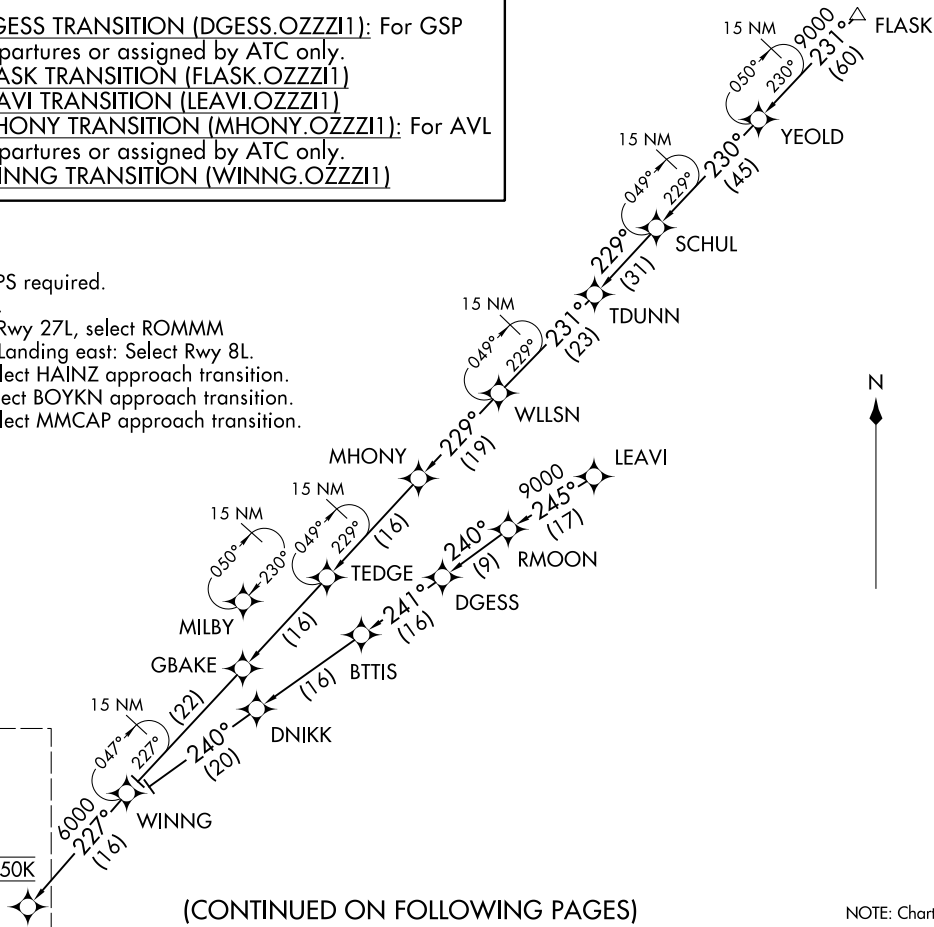


D-ATIS ARR  
119.65  
ATLANTA APP CON  
128.525 379.9

**DGESS TRANSITION (DGESS.OZZI1):** For GSP  
departures or assigned by ATC only.  
**FLASK TRANSITION (FLASK.OZZI1)**  
**LEAVI TRANSITION (LEAVI.OZZI1)**  
**MHONY TRANSITION (MHONY.OZZI1):** For AVL  
departures or assigned by ATC only.  
**WINNG TRANSITION (WINNG.OZZI1)**

- NOTE: RADAR required.
- NOTE: RNAV 1.
- NOTE: DME/DME/IRU or GPS required.
- NOTE: Turbojet aircraft only.
- NOTE: Landing west: Select Rwy 27L, select ROMMM approach transition; Landing east: Select Rwy 8L.
- NOTE: Landing Rwy 26R: Select HAINZ approach transition.
- NOTE: Landing Rwy 26L: Select BOYKN approach transition.
- NOTE: Landing Rwy 27R: Select MMCAP approach transition.



See following page  
for Arrival Routes.

OZZI  
Landing East: Expect 14000  
Landing West: Expect 12000 and 250K

(CONTINUED ON FOLLOWING PAGES)

NOTE: Chart not to scale.

OZZI ONE ARRIVAL (RNAV) Transition Routes  
ATLANTA, GEORGIA  
HARTSFIELD-JACKSON ATLANTA INTL (ATL)  
120CT17

OZZI ONE ARRIVAL (RNAV) Transition Routes  
ATLANTA, GEORGIA  
AT-26 (FAA) HARTSFIELD-JACKSON ATLANTA INTL (ATL)  
117285

D-ATIS ARR  
119.65  
ATLANTA APP CON  
128.525 379.9

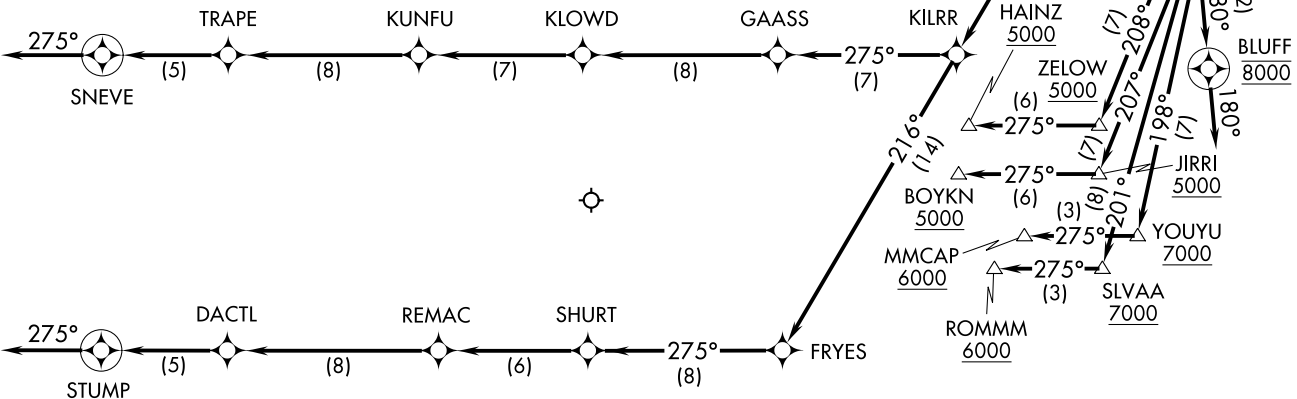
OZZI ONE ARRIVAL (RNAV)  
(OZZI, OZZI1) 120CT17

Arrival Routes

HARTSFIELD-JACKSON ATLANTA INTL (ATL)  
ATLANTA, GEORGIA



- NOTE: RADAR required.
- NOTE: RNAV 1.
- NOTE: DME/DME/IRU or GPS required.
- NOTE: Turbojet aircraft only.
- NOTE: Landing west: Select Rwy 27L, select ROMMM approach transition; Landing east: Select Rwy 8L.
- NOTE: Landing Rwy 26R: Select HAINZ approach transition.
- NOTE: Landing Rwy 26L: Select BOYKN approach transition.
- NOTE: Landing Rwy 27R: Select MMCAP approach transition.



OZZI  
Landing East: Expect 14000  
Landing West: Expect 12000 and 250K

(OZZI, OZZI1) 17285  
OZZI ONE ARRIVAL (RNAV)

Arrival Routes

AT-26 (FAA) HARTSFIELD-JACKSON ATLANTA INTL (ATL)  
ATLANTA, GEORGIA

(NARRATIVE CONTINUED ON FOLLOWING PAGE)

NOTE: Chart not to scale.