

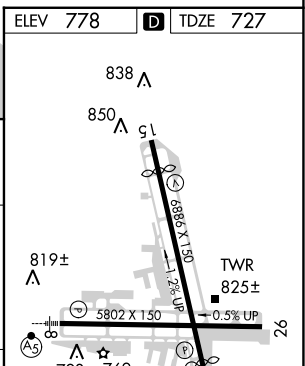
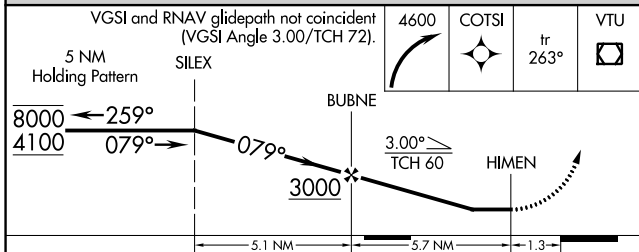
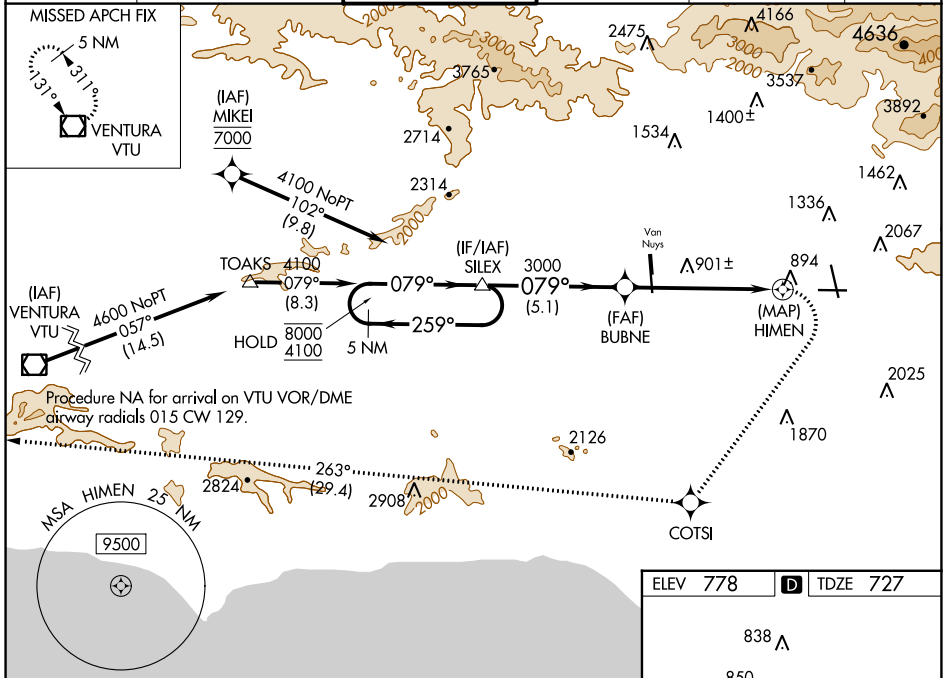
WAAS CH 53638 W08A	APP CRS 079°	Rwy Idg TDZE Apt Elev	5801 727 778
--	------------------------	-----------------------------	---

RNAV (GPS) Z RWY 8

BOB HOPE (BUR)

RNP APCH.		MALSR	MISSED APPROACH: Climbing right turn to 4600 direct COTS1 and on track 263° to VTU VOR/DME and hold.
<p>▼ Straight-in Rwy 8 at night, Circling to Rwy 33 at night, operational VGSI required, remain on or above VGSI glidepath until threshold. Circling Rwy 26 NA at night and Circling Rwy 33 NA at night for Cat D. Circling NA for Cats A/B/C northeast of Rwy 15 and 26. Circling NA for Cat D east of Rwy 15-33. For inop ALS, increase LP Cat A/B visibility to 1½ SM and LP Cat C/D visibility to 2½ SM. For inop ALS, increase LNAV Cat A/B visibility to 1½ SM. Rwy 8 helicopter visibility reduction below RVR 5000 NA.</p>			

D-ATIS 134.5	SOCAL APP CON 120.4 360.6 (NORTH) 134.2 338.2 (WEST)	BURBANK TOWER 118.7 254.3	GND CON 123.9 348.6	CLNC DEL 118.0 348.6	CPDLC
------------------------	--	-------------------------------------	-------------------------------	--------------------------------	-------



CATEGORY	A	B	C	D
LP MDA	1540/60	813 (800-1½)	1540-1⅞	813 (800-1⅞)
LNAV MDA	1660/60	933 (900-1½)	1660-2	933 (900-2)
C CIRCLING	1660-1½	882 (900-1½)	2240-3 1462 (1500-3)	2320-3 1542 (1600-3)

MIRL Rwy 15-33
HIRL Rwy 8-26
REIL Rwys 15, 26, and 33

SW-3, 22 FEB 2024 to 21 MAR 2024

SW-3, 22 FEB 2024 to 21 MAR 2024