

APP CRS	Rwy Idg	3196
002°	TDZE	313
	Apt Elev	313

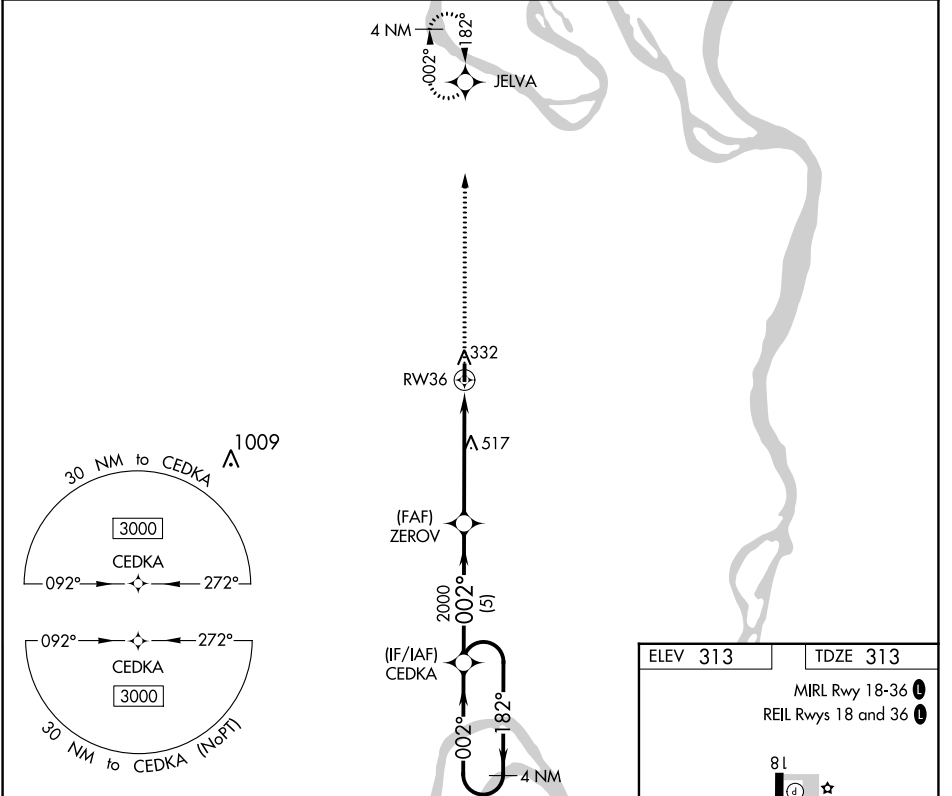
RNAV (GPS) RWY 36

MISSISSIPPI COUNTY (CHQ)

NA DME/DME RNP-0.3 NA. Procedure NA at night. Use Sikeston altimeter setting, when not received use Cairo, IL altimeter setting and increase all MDA 20 feet. Helicopter visibility reduction below 1 SM NA.

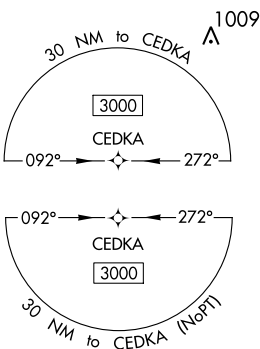
MISSED APPROACH: Climb to 3000 direct JELVA and hold.

SIK AWOS-3 119.175	MEMPHIS CENTER 133.65 292.15	CTAF 122.9
-------------------------------------	---	-----------------------------

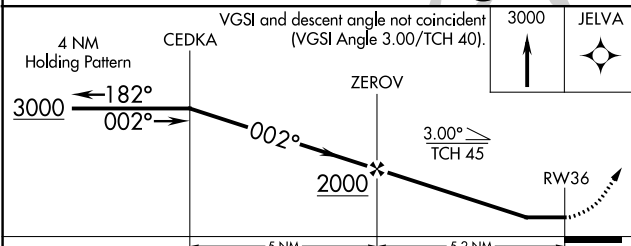


NC-3, 22 FEB 2024 to 21 MAR 2024

NC-3, 22 FEB 2024 to 21 MAR 2024



ELEV 313	TDZE 313
MIRL Rwy 18-36	
REIL Rwys 18 and 36	



CATEGORY	A	B	C	D
LNVA MDA	800-1	487 (500-1)		NA
CIRCLING	800-1 487 (500-1)	860-1 547 (600-1)		NA