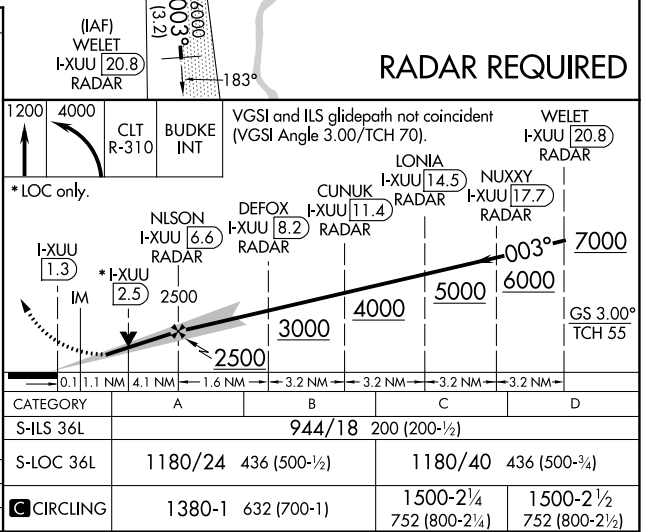
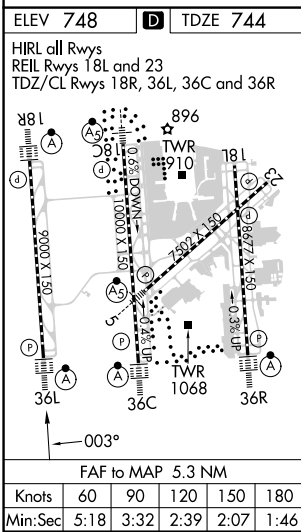
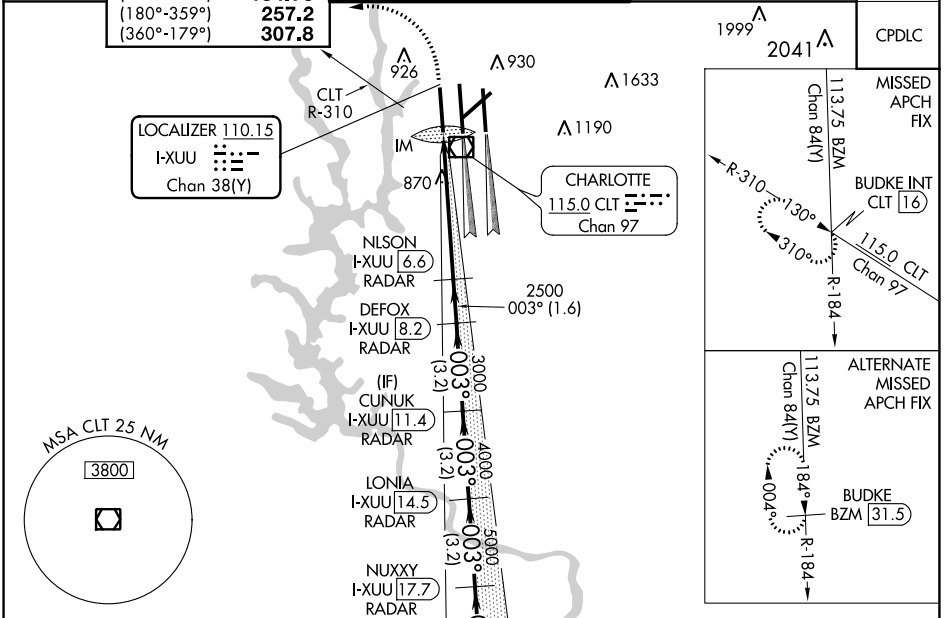


LOC/DME I-XUU 110.15 Chan 38(Y)	APP CRS 003°	Rwy Idg TDZE 9000 744 Apt Elev 748
--	------------------------	---

ILS or LOC RWY 36L

CHARLOTTE/DOUGLAS INTL (CLT)

<p>⚠ Circling NA at night. Simultaneous approach authorized.</p> <p>⚠ DME or RADAR required.</p>	<p>ALSF-2</p>	<p>MISSED APPROACH: Climb to 1200 then climbing left turn to 4000 on CLT VOR/DME R-310 to BUDKE/CLT 16 DME and hold.</p>		
<p>D-ATIS ARR 121.15 DEP 132.1</p>	<p>CHARLOTTE APP CON (001°-119°) 128.32 (120°-295°) 120.05 (296°-360°) 134.75 (180°-359°) 257.2 (360°-179°) 307.8</p>	<p>CHARLOTTE TOWER (Rwys 18L-36R) 118.1 257.8 (Rwy 18C-36C) 126.4 257.8 (Rwy 18R-36L) 133.35 257.8</p>	<p>GND CON 121.8 348.6 (WEST) 121.9 348.6 (EAST)</p>	<p>CLNC DEL 127.15 348.6</p>



SE-2, 22 FEB 2024 to 21 MAR 2024

SE-2, 22 FEB 2024 to 21 MAR 2024