

BUCKO TRANSITION (BUCKO.FRDMM5):

NOTE: RADAR required.

NOTE: RNAV 1.

NOTE: DME/DME/IRU or GPS required.

NOTE: Turbojets only, turboprops as assigned by ATC only.

NOTE: PROHIBITED AREA (P56) 1.5 NM north of DCA

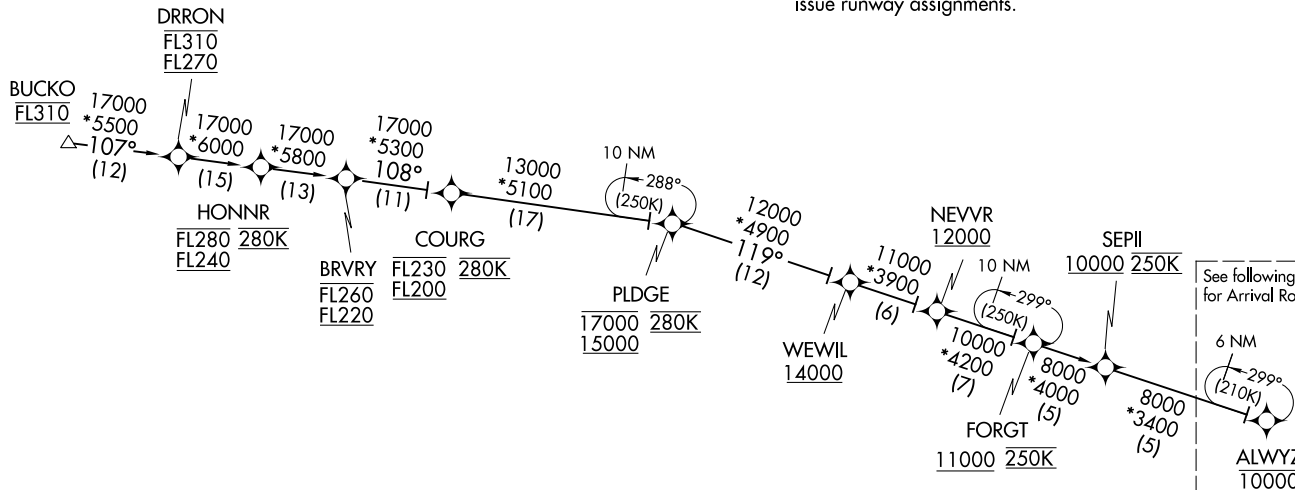
AVOID - surface to FL180.

NOTE: Maintain last assigned altitude until cleared to "descend via" the FRDMM5. ARTCC will issue landing direction assignment (north or south) and Potomac TRACON will issue runway assignments.

POTOMAC APP CON
118.675 323.175
DCA D-ATIS
132.65
KADW D-ATIS
133.675 251.05
*KDAA ATIS
128.175



MORGANTOWN
MGW



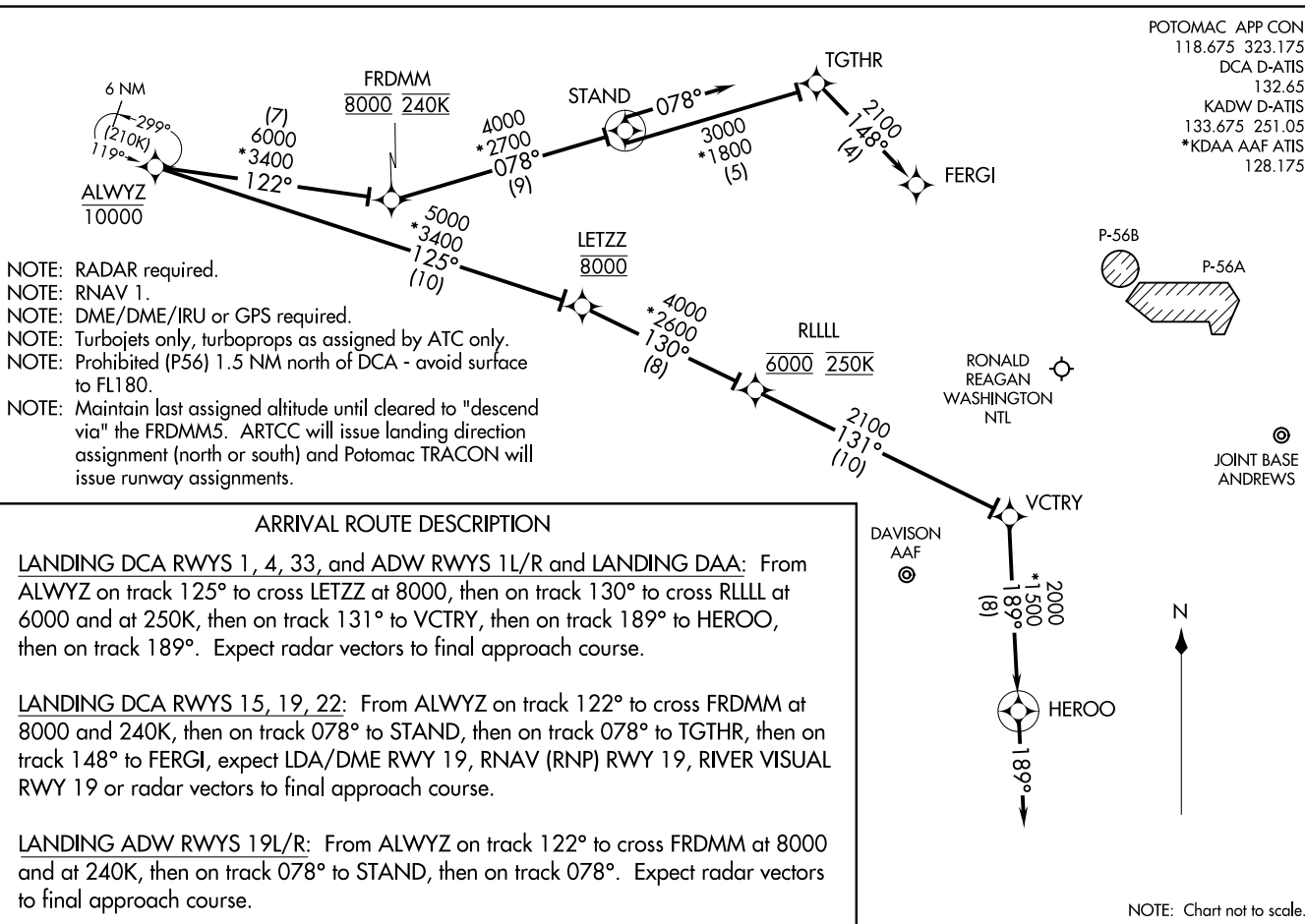
See following page
for Arrival Routes.

NOTE: Chart not to scale.

(CONTINUED ON FOLLOWING PAGE)

FRDMM FIVE ARRIVAL (RNAV) Arrival Routes
(ALWYZ,FRDMM5) 20JUN19

WASHINGTON, DC

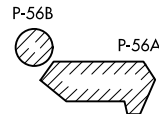


(ALWYZ,FRDMM5) 21168
FRDMM FIVE ARRIVAL (RNAV) Arrival Routes

WASHINGTON, DC

AL-443 (FAA)

POTOMAC APP CON
118.675 323.175
DCA D-ATIS
132.65
KADW D-ATIS
133.675 251.05
*KDAA AAF ATIS
128.175



JOINT BASE
ANDREWS

RONALD
REAGAN
WASHINGTON
NTL

DAVISON
AAF

