

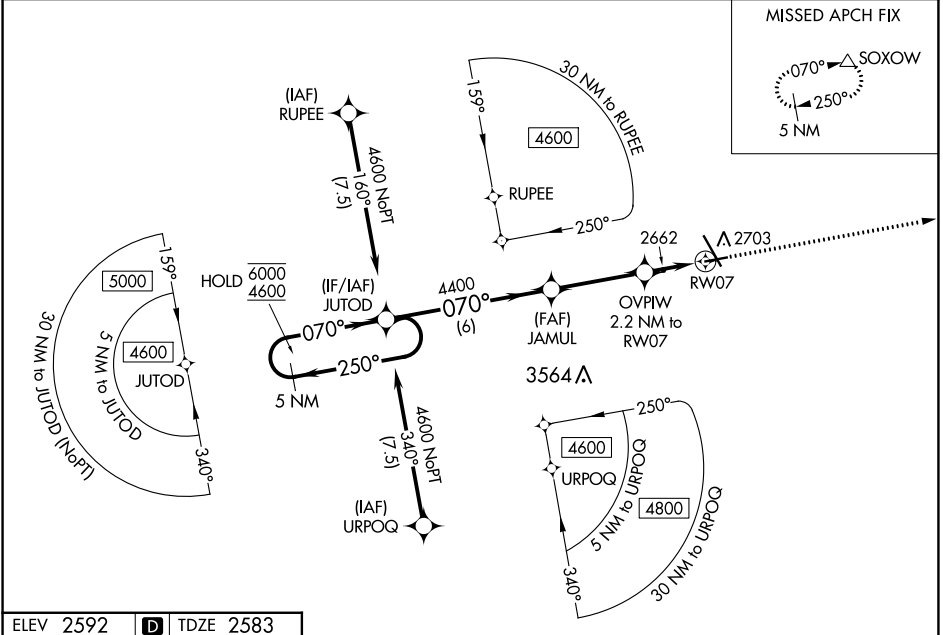
WAAS CH <b>90544</b> <b>W07A</b>	APP CRS <b>070°</b>	Rwy ldg <b>4700</b> TDZE <b>2583</b> Apt Elev <b>2592</b>
--	------------------------	---

# RNAV (GPS) RWY 7

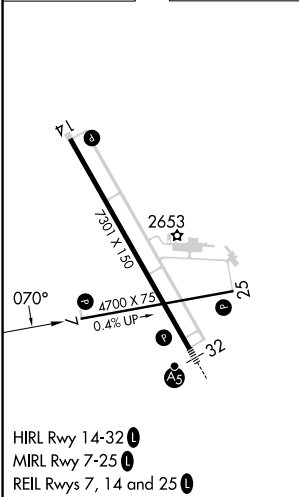
DICKINSON/THEODORE ROOSEVELT RGNL (DIK)

RNP APCH - GPS.	MISSED APPROACH: Climb to 4600 direct SOXOW and hold.
<p><b>▼</b> Rwy 7 helicopter visibility reduction below 3/4 SM NA.</p> <p><b>▲</b> For uncompensated Baro-VNAV systems, LNAV/VNAV NA below -26°C or above 54°C.</p>	

ASOS <b>118.375</b>	MINNEAPOLIS CENTER <b>124.25 236.825</b>	UNICOM <b>123.0 (CTAF) 0</b>
------------------------	---	---------------------------------



ELEV <b>2592</b>	<b>D</b>	TDZE <b>2583</b>
------------------	----------	------------------



HIRL Rwy 14-32 **L**  
 MIRL Rwy 7-25 **L**  
 REIL Rwy 7, 14 and 25 **L**

5 NM Holding Pattern				JUTOD		JAMUL		OVPW 2.2 NM to RWY 7		4600	SOXOW
6000 ← 250°				4600 → 070°		4400 → 070°		3320		↑	△
GP 3.00°				TCH 45		6 NM		3.4 NM		1.2 NM	
1.2 NM				1 NM		1 NM		1 NM		1 NM	
CATEGORY	A	B	C	D							
LPV DA	2833-1		250 (300-1)								
LNAV/VNAV DA	2833-1		250 (300-1)								
LNAV MDA	2920-1		337 (400-1)								
CIRCLING	3060-1		468 (500-1)		3120-1½		528 (600-1½)		3200-2		608 (700-2)

# RNAV (GPS) RWY 7

NC-1, 22 FEB 2024 to 21 MAR 2024

NC-1, 22 FEB 2024 to 21 MAR 2024