

WAAS CH 77923 W19A	APP CRS 194°	Rwy Idg TDZE Apt Elev	6002 4482 4514
--	------------------------	-----------------------------	---

RNAV (GPS) RWY 19

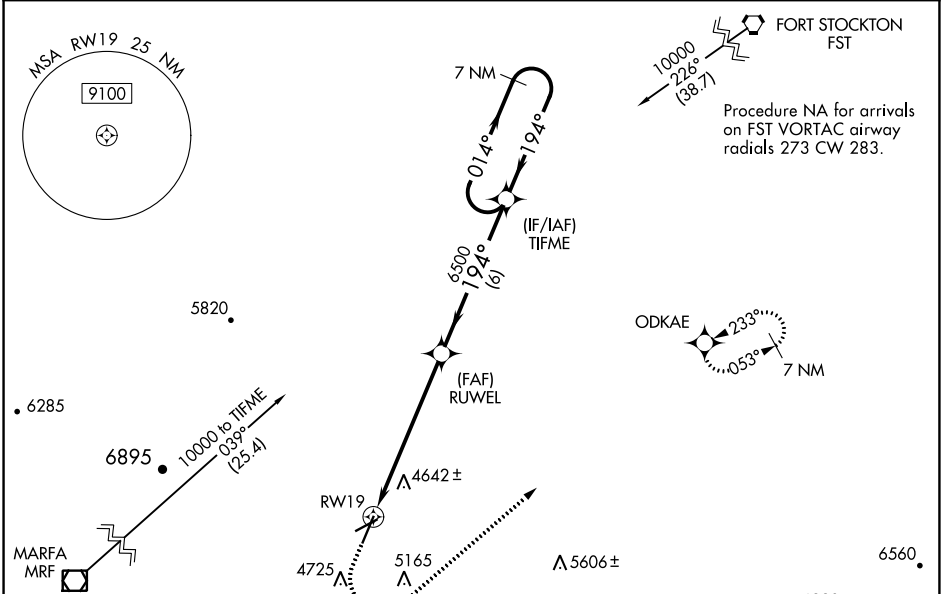
ALPINE-CASPARIS MUNI (E38)

RNP APCH.

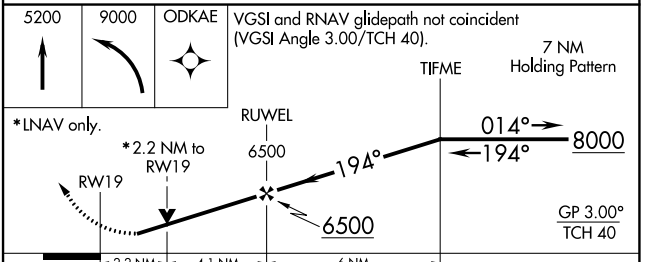
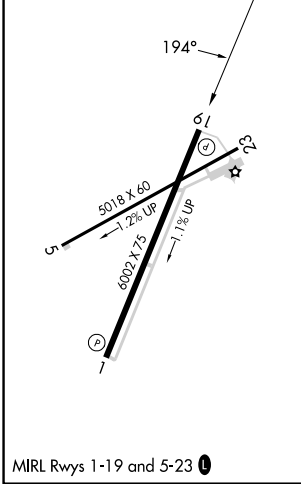
⚠ For uncompensated Baro-VNAV systems, LNAV/VNAV NA below -23°C or above 54°C. Circling NA W of Rwy 1-19. Rwy 19 helicopter visibility reduction below 3/4 SM NA.

MISSED APPROACH: (Do not exceed 165K until ODKAE) Climb to 5200 then climbing left turn to 9000 direct ODKAE and hold, continue climb-in-hold to 9000.

AWOS-3 119.025	ALBUQUERQUE CENTER 135.875 292.15	UNICOM 122.8 (CTAF) 0
--------------------------	---	---------------------------------



ELEV 4514	TDZE 4482
-----------	-----------



CATEGORY	A	B	C	D
LPV DA	4964-13/8		482 (500-13/8)	NA
LNAV/VNAV DA	5125-17/8		643 (700-17/8)	NA
LNAV MDA	5180-1	698 (700-1)		5180-2 698 (700-2)
C CIRCLING	5180-1 666 (700-1)	5460-11/4 946 (1000-11/4)	5760-3 1246 (1300-3)	NA

SC-3, 22 FEB 2024 to 21 MAR 2024

SC-3, 22 FEB 2024 to 21 MAR 2024

WAAS CH 50234 W23A	APP CRS 233°	Rwy ldg TDZE Apt Elev	5018 4482 4514
---------------------------------	------------------------	-----------------------------	---

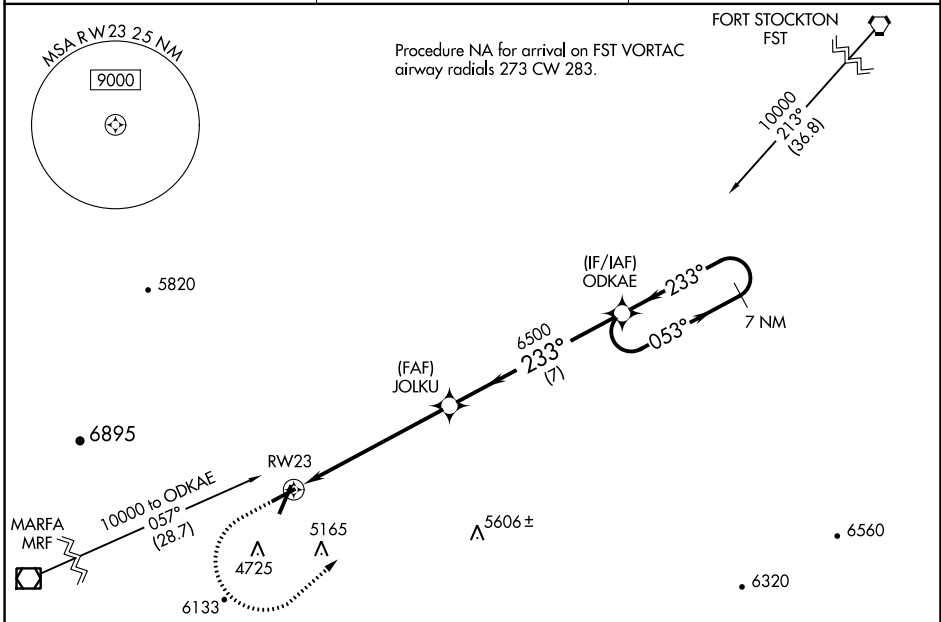
RNAV (GPS) RWY 23

ALPINE-CASPARIS MUNI (E38)

▼ For uncompensated Baro-VNAV systems, LNAV/VNAV NA below -23°C (-9°F) or above 54°C (130°F). Circling NA west of Rwy 1-19.
▲ Rwy 23 helicopter visibility reduction below ¼ SM NA.
 DME/DME RNP-0.3 NA.

MISSED APPROACH: (Do not exceed 165K until ODKAE) Climb to 5400 then climbing left turn to 9000 direct ODKAE and hold, continue climb-in-hold to 9000.

AWOS-3 119.025	ALBUQUERQUE CENTER 135.875 292.15	UNICOM 122.8 (CTAF) ①
--------------------------	---	--



ELEV 4514	TDZE 4482
-----------	-----------

5400	9000	ODKAE			
↑	↶	✧			

* LNAV only.

* 2.8 NM to RW23

JOLKU 6500

ODKAE 7 NM Holding Pattern

8000

GP 3.00°
TCH 40

CATEGORY	A	B	C	D
LPV DA	4999-1 3/8	517 (500-1 3/8)		NA
LNAV/VNAV DA	5087-1 3/4	605 (600-1 3/4)		NA
LNAV MDA	5400-1 1/4	918 (900-1 1/4)	5400-2 1/2 918 (900-2 1/2)	NA
ⓐ CIRCLING	5400-1 1/4 886 (900-1 1/4)	5460-1 1/4 946 (1000-1 1/4)	5760-3 1246 (1300-3)	NA

SC-3, 22 FEB 2024 to 21 MAR 2024

SC-3, 22 FEB 2024 to 21 MAR 2024