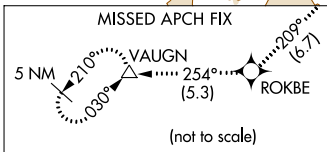
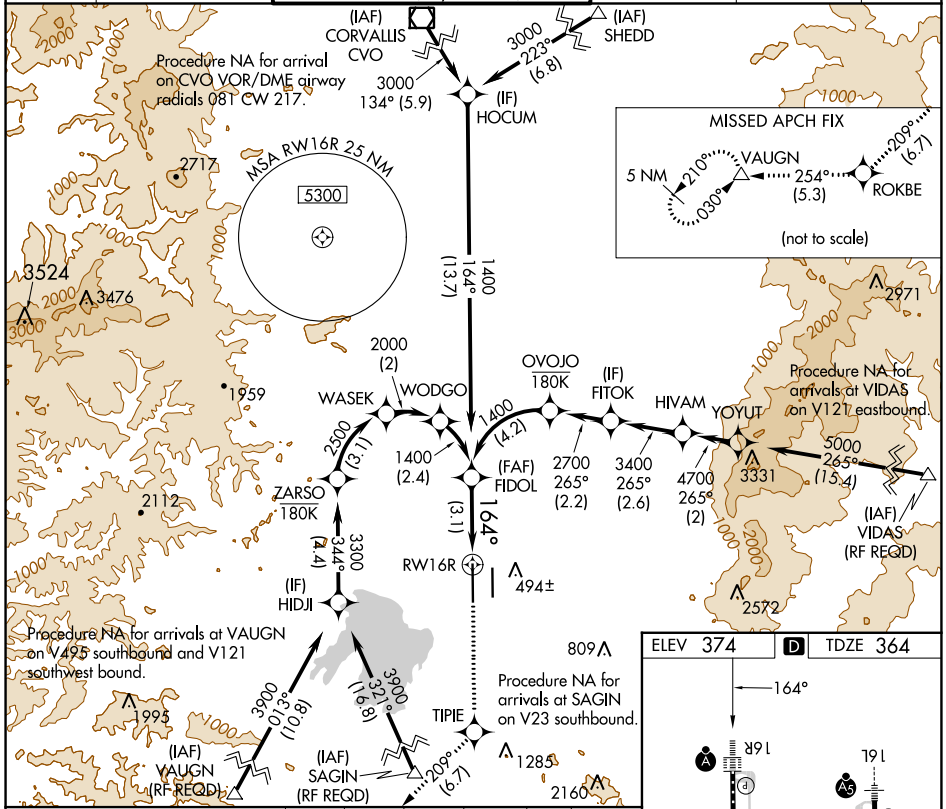


APP CRS	Rwy Idg	8009
164°	TDZE	364
	Apt Elev	374

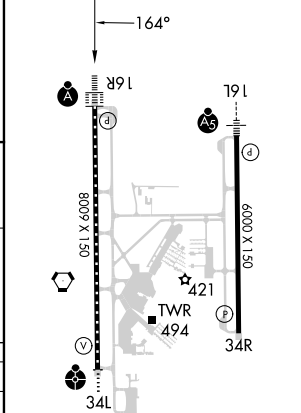
RNAV (RNP) Z RWY 16R

MAHLON SWEET FLD (EUG)

RNP AR APCH.		EUGENE TOWER *		GND CON	CLNC DEL	UNICOM
<p>▼ For uncompensated Baro-VNAV systems, procedure NA below -9°C or above 54°C. Simultaneous approach authorized. For inop ALS, increase RNP 0.17 all Cats visibility to RVR 4000 and RNP 0.30 all Cats visibility to RVR 5500.</p>		<p>118.9 (CTAF) 0 371.9 (Rwy 16R/34L) 124.15 371.9 (Rwy 16L/34R)</p>		121.7 269.5	121.7 269.5	122.95
ATIS	CASCADE APP CON *					
125.225	119.6 348.7					



ELEV 374	D	TDZE 364
----------	----------	----------



FIDOL	5000	TIPIE	ROKBE	VAUGN
1400	↑	tr 209°	tr 254°	△
GP 3.00°	See planview for multiple IF locations.			
TCH 51	3.1 NM			

CATEGORY	A	B	C	D
RNP 0.17 DA		614/24	250 (300-½)	
RNP 0.30 DA		711/30	347 (400-¾)	

AUTHORIZATION REQUIRED

TDZ/CL Rwy 16R
REIL Rwy 34R
HIRL Rwy 16L-34R and Rwy 16R-34L

NW-1, 22 FEB 2024 to 21 MAR 2024

NW-1, 22 FEB 2024 to 21 MAR 2024