

APP CRS	Rwy Idg	8810
039°	TDZE	11
	Apt Elev	17

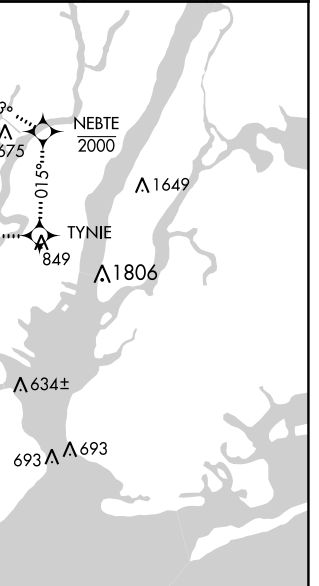
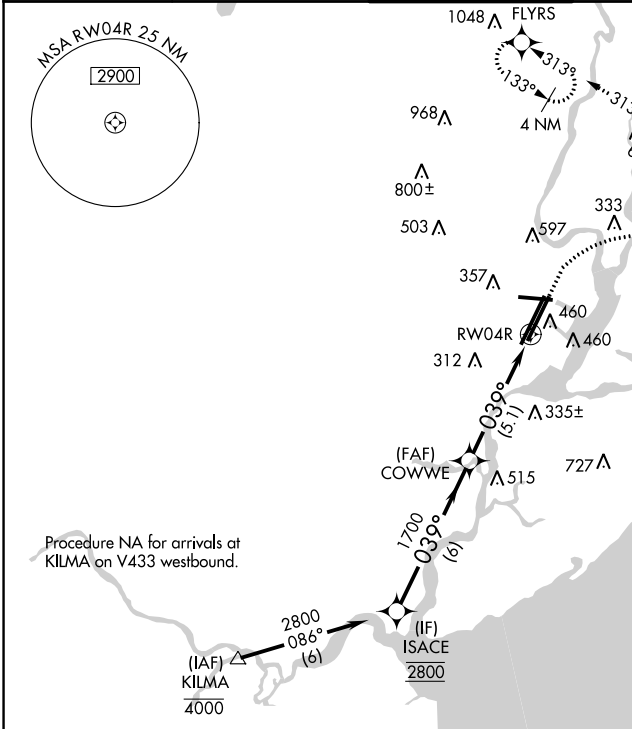
RNAV (RNP) Z RWY 4R

NEWARK LIBERTY INTL (EWR)

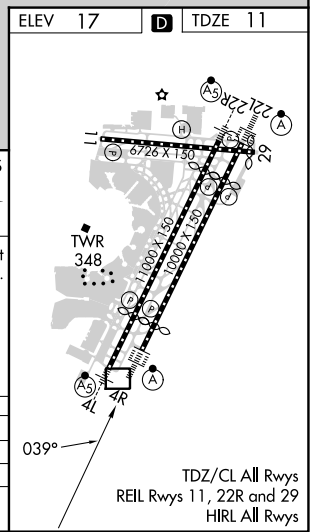
RNP AR APCH.
 RADAR required.
 For uncompensated Baro-VNAV systems, procedure NA below -12°C or above 54°C. For inop ALS, increase RNP 0.30 all Cats visibility to 1 1/2 SM.

ALSF-2
 MISSED APPROACH: (Do not exceed 210K until NEBTE) Climb to 560 then climbing right turn to 2000 direct TYNIE and left turn on track 015° to NEBTE, cross NEBTE at or below 2000 then dimbing left turn to 3000 on track 313° to FLYRS and hold, continue climb-in-hold to 3000.
 * Missed approach requires minimum climb of 351 feet per NM to 660.

D-ATIS	NEW YORK APP CON	NEWARK TOWER	GND CON	CLNC DEL	CPDLC
115.7 134.825	128.55 379.9	118.3 257.6	121.8	118.85	



ISACE	560	2000	TYNIE	tr 015°	NEBTE	3000	FLYRS
2800					2000		
VGSI and RNAV glidepath not coincident (VGSI Angle 2.95/TCH 71).							
GP 3.04°	6 NM		5.1 NM				
TCH 55							
CATEGORY	A	B	C	D			
RNP 0.15 DA*	396/35		385 (400-3/4)				
RNP 0.30 DA	490/50		479 (500-1)				
AUTHORIZATION REQUIRED							



NE-2, 22 FEB 2024 to 21 MAR 2024

NE-2, 22 FEB 2024 to 21 MAR 2024

RNAV (RNP) Z RWY 4R