

NDB CZJ <b>341</b>	APP CRS <b>157°</b>	Rwy Idg TDZE Apt Elev	<b>5501</b> <b>319</b> <b>319</b>
-----------------------	------------------------	-----------------------------	---

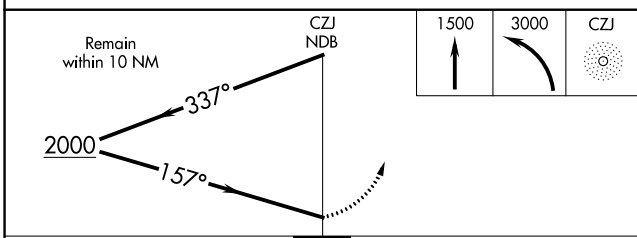
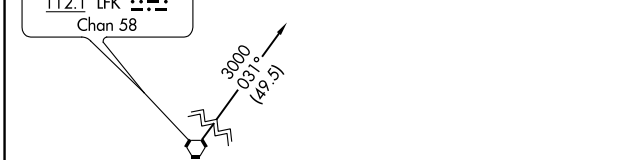
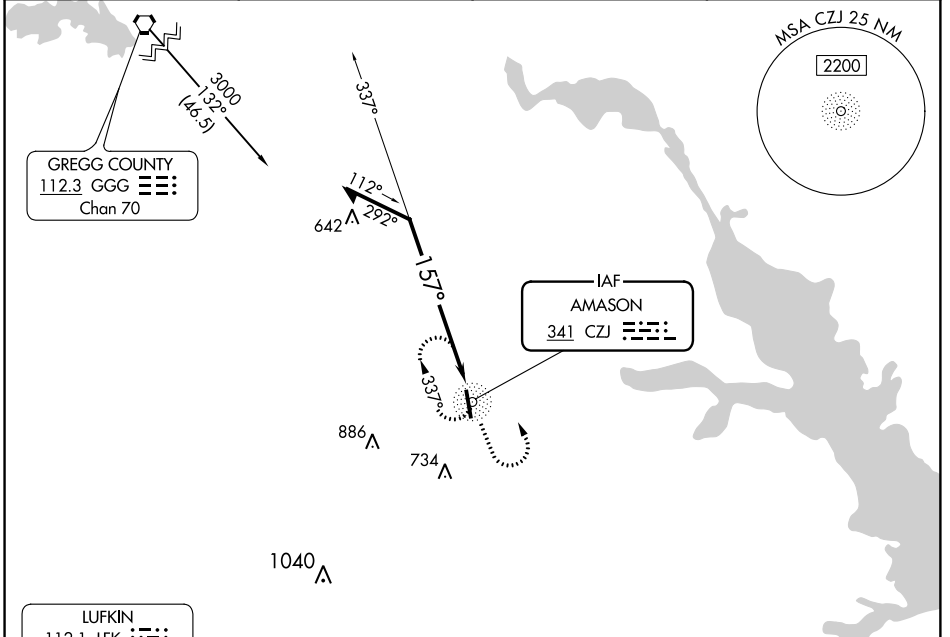
# NDB RWY 17

CENTER MUNI (F17)

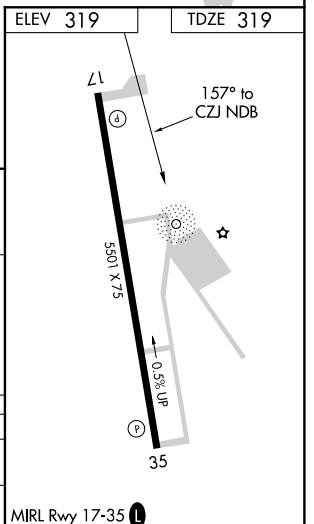
**NA** Rwy 17 helicopter visibility reduction below 3/4 SM NA.

**MISSED APPROACH:** Climb to 1500 then climbing left turn to 3000 direct CZJ NDB and hold.

AWOS-3PT <b>128.775</b>	FORTH WORTH CENTER <b>126.325 346.25</b>	UNICOM <b>122.8 (CTAF)</b>
----------------------------	---	-------------------------------



CATEGORY	A	B	C	D
S-17	1200-1 1/4	881 (900-1 1/4)	1200-2 3/4 881 (900-2 3/4)	NA
CIRCLING	1200-1 1/4	881 (900-1 1/4)	1200-2 3/4 881 (900-2 3/4)	NA



SC-5, 05 DEC 2019 to 02 JAN 2020

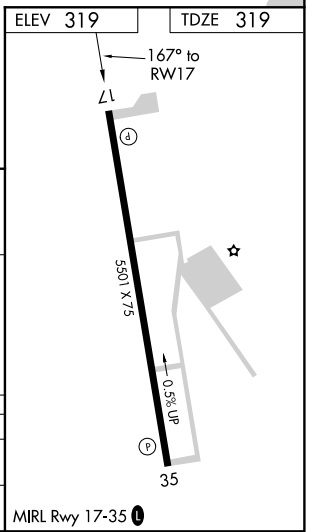
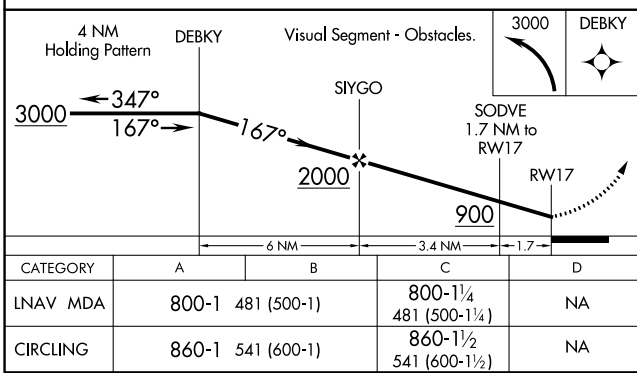
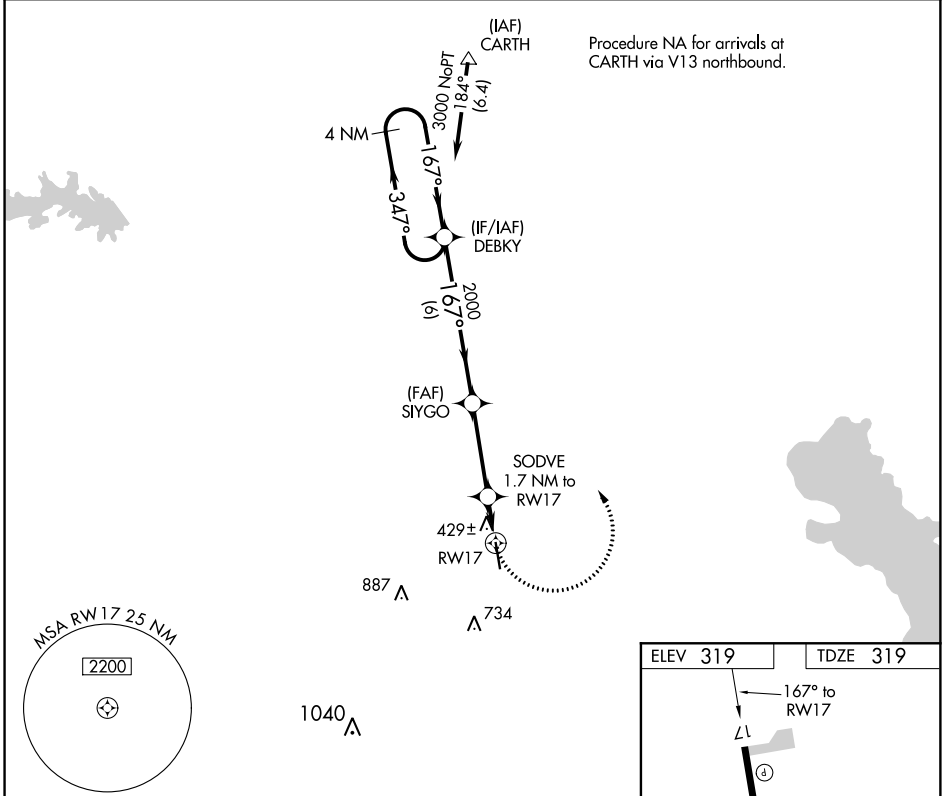
SC-5, 05 DEC 2019 to 02 JAN 2020

APP CRS	Rwy Idg	<b>5501</b>
<b>167°</b>	TDZE	<b>319</b>
	Apt Elev	<b>319</b>

# RNAV (GPS) RWY 17

CENTER MUNI (F17)

RNP APCH.		MISSED APPROACH: Climbing left turn to 3000 direct DEBKY and hold, continue climb-in-hold to 3000.	
▼ ▲ NA Rwy 17 helicopter visibility reduction below ¾ SM NA.			
AWOS-3PT <b>128.775</b>	NACOGDOCHES AWOS-3 <b>135.625</b>	FORTH WORTH CENTER <b>126.325 346.25</b>	UNICOM <b>122.8</b> (CTAF) <b>0</b>



SC-5, 05 DEC 2019 to 02 JAN 2020

SC-5, 05 DEC 2019 to 02 JAN 2020

APP CRS	Rwy Idg	<b>5501</b>
<b>347°</b>	TDZE	<b>308</b>
	Apt Elev	<b>319</b>

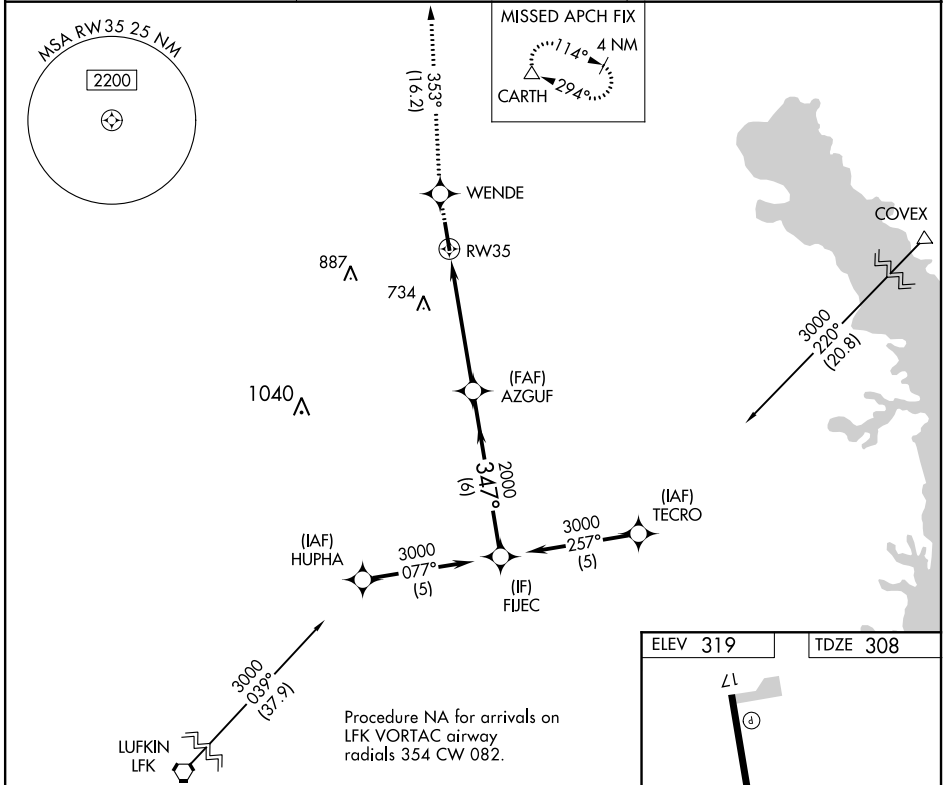
# RNAV (GPS) RWY 35

CENTER MUNI (F17)

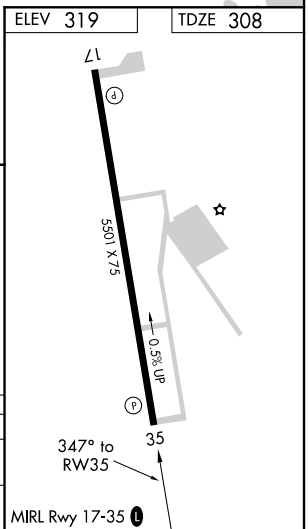
RNP APCH.  
 ▽ NA Rwy 35 helicopter visibility reduction below 3/4 SM NA.

MISSED APPROACH: Climb to 3800 direct WENDE and on track 353° to CARTH and hold.

AWOS-3PT <b>128.775</b>	FORTH WORTH CENTER <b>126.325 346.25</b>	UNICOM <b>122.8 (CTAF) 0</b>
----------------------------	---	---------------------------------



3800	WENDE	CARTH	VGSi and descent angles not coincident (VGSi Angle 3.00/TCH 49).		FIJEC
↑	✧	△			
	tr 353°				
					3000
					2000
					347°
					3.04° TCH 45
					1.4 NM
					3.8 NM
					6 NM
CATEGORY	A	B	C	D	
LNVA MDA	960-1 652 (700-1)		960-1 3/4 652 (700-1 3/4)	NA	
CIRCLING	960-1 641 (700-1)		960-1 3/4 641 (700-1 3/4)	NA	



SC-5, 05 DEC 2019 to 02 JAN 2020

SC-5, 05 DEC 2019 to 02 JAN 2020