

APP CRS	Rwy ldg	3707
174°	TDZE	1561
	Apt Elev	1561

RNAV (GPS) RWY 17

ARLEDGE FLD (F56)

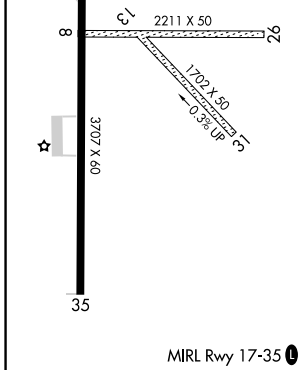
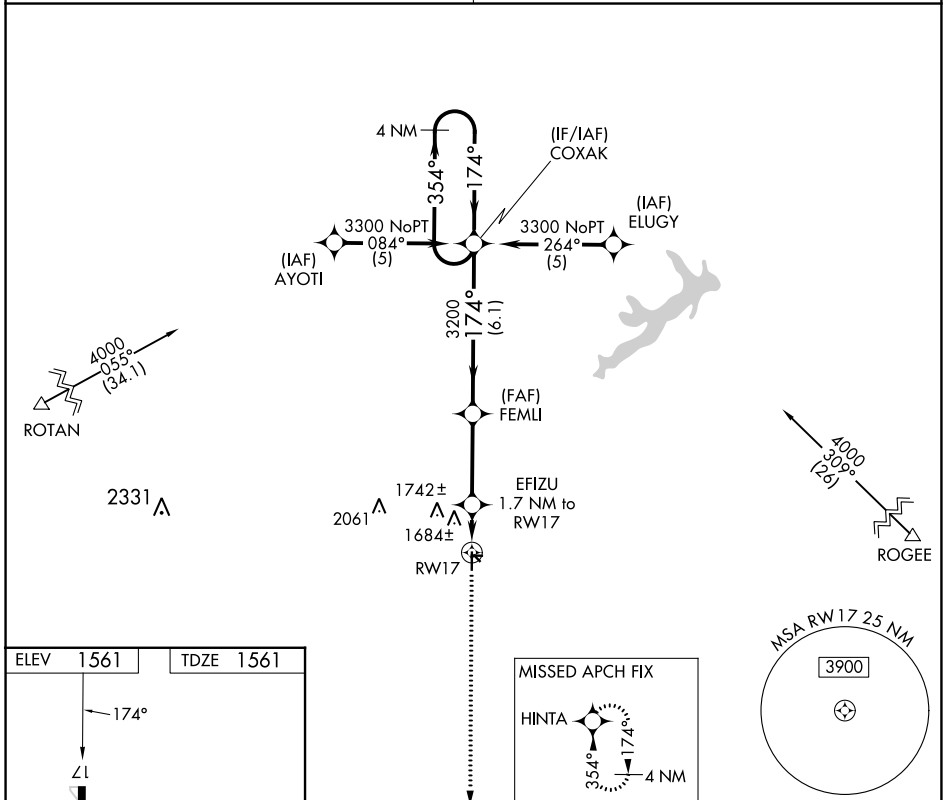
RNP APCH-GPS.

Procedure NA at night. Use Abilene Rgnl altimeter setting; when not received use Breckenridge altimeter setting and increase all MDAs 40 feet.

NA Rwy 17 helicopter visibility reduction below 1 SM NA.

MISSED APPROACH: Climb to 3300 direct HINTA and hold.

ABILENE APP CON	UNICOM
127.2 282.3	122.8 (CTAF) 0



3300	HINTA	FEMLI	COXAK	4 NM Holding Pattern
↑	★			
	EFIZU 1.7 NM to RWY 17	3200	3300	354° →
	2120	3200		← 174°
	1.7 NM	3.3 NM	6.1 NM	
CATEGORY	A	B	C	D
LNAV MDA	2040-1	479 (500-1)	2040-1 ³ / ₈ 479 (500-1 ³ / ₈)	NA
CIRCLING	2100-1 539 (600-1)	2200-1 639 (700-1)	2220-1 ³ / ₄ 659 (700-1 ³ / ₄)	NA

RNAV (GPS) RWY 17

SC-2, 05 OCT 2023 to 02 NOV 2023

SC-2, 05 OCT 2023 to 02 NOV 2023

APP CRS
354°
Rwy Idg **3707**
TDZE **1560**
Apt Elev **1561**

RNAV (GPS) RWY 35

ARLEDGE FLD (F56)

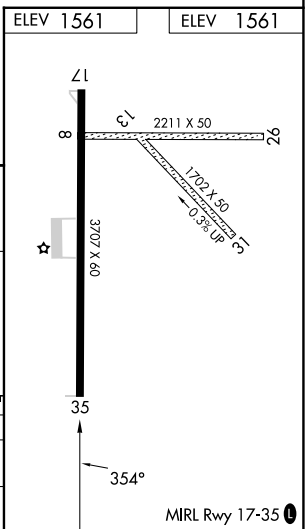
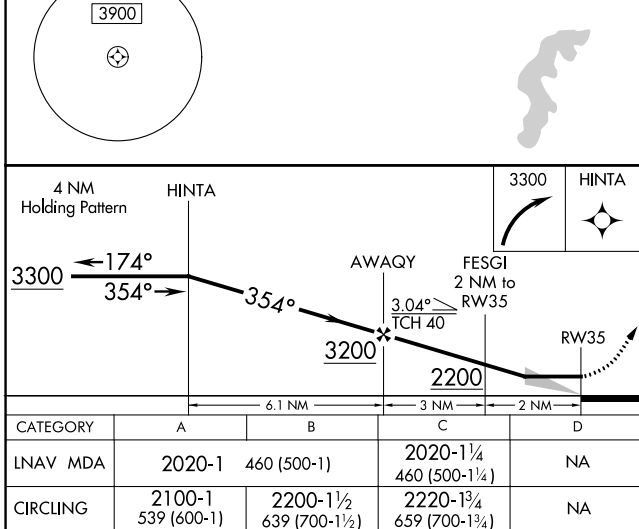
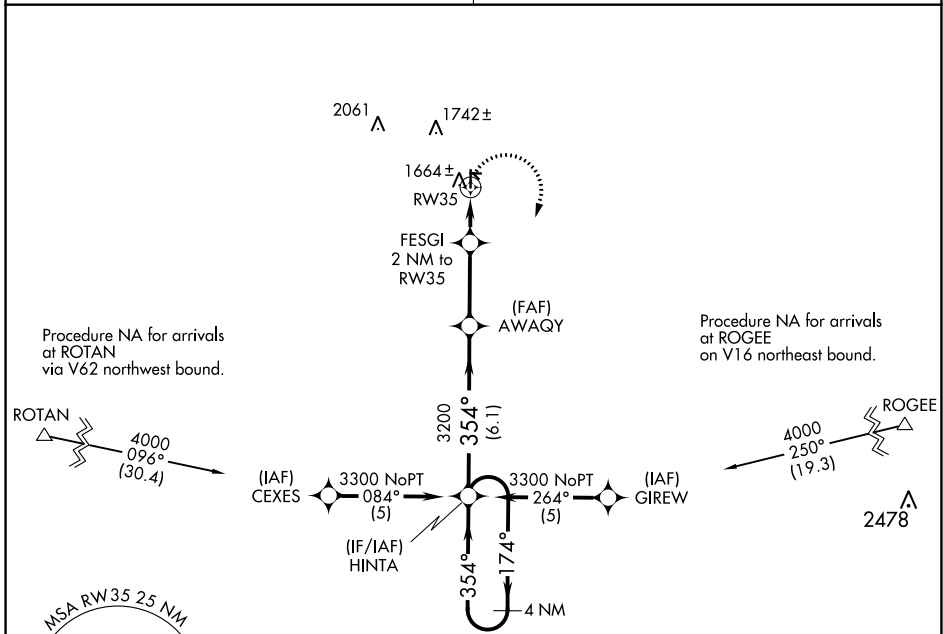
RNP APCH-GPS

▽ Use Abilene Rgnl altimeter setting; when not received use Breckenridge altimeter setting and increase all MDAs 40 feet and visibility Cat C ¼ SM.
▲ NA Procedure NA at night.

MISSED APPROACH: Climbing right turn to 3300 direct HINTA and hold.

ABILENE APP CON
127.2 282.3

UNICOM
122.8 (CTAF) 0



SC-2, 05 OCT 2023 to 02 NOV 2023

SC-2, 05 OCT 2023 to 02 NOV 2023