

WAAS CH 49242 W12A	APP CRS 111°	Rwy Idg TDZE Apt Elev	3212 280 280
--	------------------------	-----------------------------	---

RNAV (GPS) RWY 12

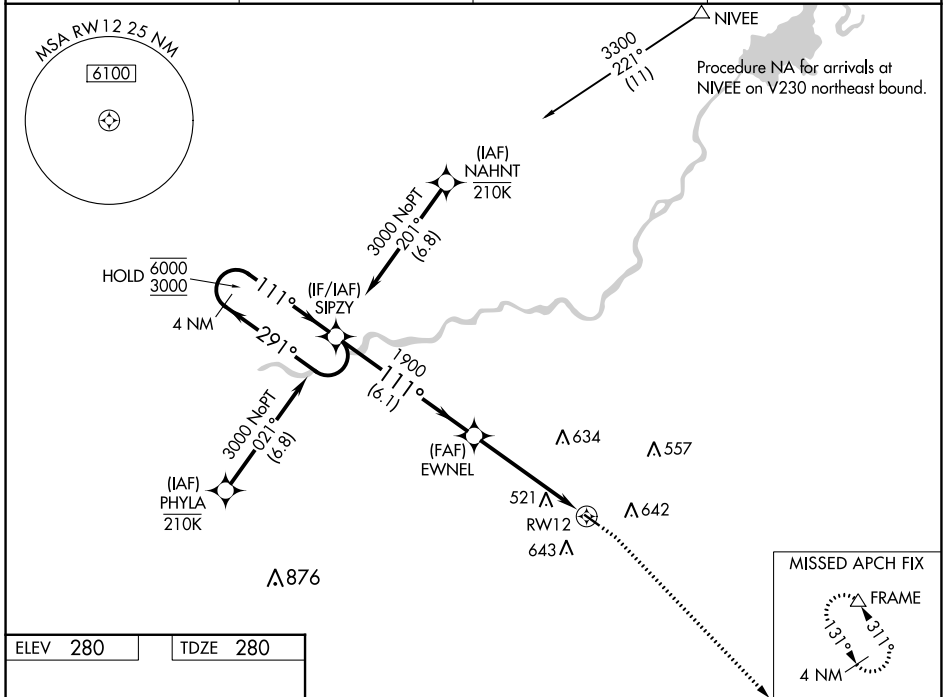
FRESNO CHANDLER EXEC (FCH)

RNP APCH-GPS.

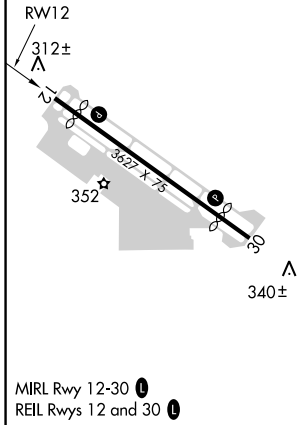
▼ Circling Rwy 30 NA at night. Rwy 12 helicopter visibility reduction below $\frac{3}{4}$ SM NA.
▲ For uncompensated Baro-VNAV systems, LNAV/VNAV NA below -1° C or above 54° C.

MISSED APPROACH: Climb to 800 then climbing right turn to 2000 direct FRAME and hold.

AWOS-3 135.225	FRESNO APP CON 119.0 323.25	CLNC DEL 119.0	UNICOM 123.0 (CTAF) 0
--------------------------	---------------------------------------	--------------------------	---------------------------------



ELEV 280	TDZE 280
----------	----------



	800	2000	FRAME
	↑	↷	△
4 NM Holding Pattern	SIPZY		
6000 ← 291°	EWNEL		
3000 → 111°	1900		
GP 3.00°	1.4 NM to RWY 12		
TCH 40	RWY 12		
	6.1 NM	3.5 NM	1.4 NM
CATEGORY	A	B	C
LPV DA	530-1 250 (300-1)		
LNAV/VNAV DA	809-1½ 529 (600-1½)		
LNAV MDA	780-1 500 (500-1)	780-1⅓ 500 (500-1⅓)	
<input checked="" type="checkbox"/> CIRCLING	960-1 680 (700-1)	960-2 680 (700-2)	

SW-2, 22 FEB 2024 to 21 MAR 2024

SW-2, 22 FEB 2024 to 21 MAR 2024