

WAAS CH <b>69338</b> <b>W02A</b>	APP CRS <b>023°</b>	Rwy Idg <b>3604</b> TDZE <b>591</b> Apt Elev <b>597</b>
----------------------------------------	------------------------	---------------------------------------------------------------

# RNAV (GPS) RWY 2

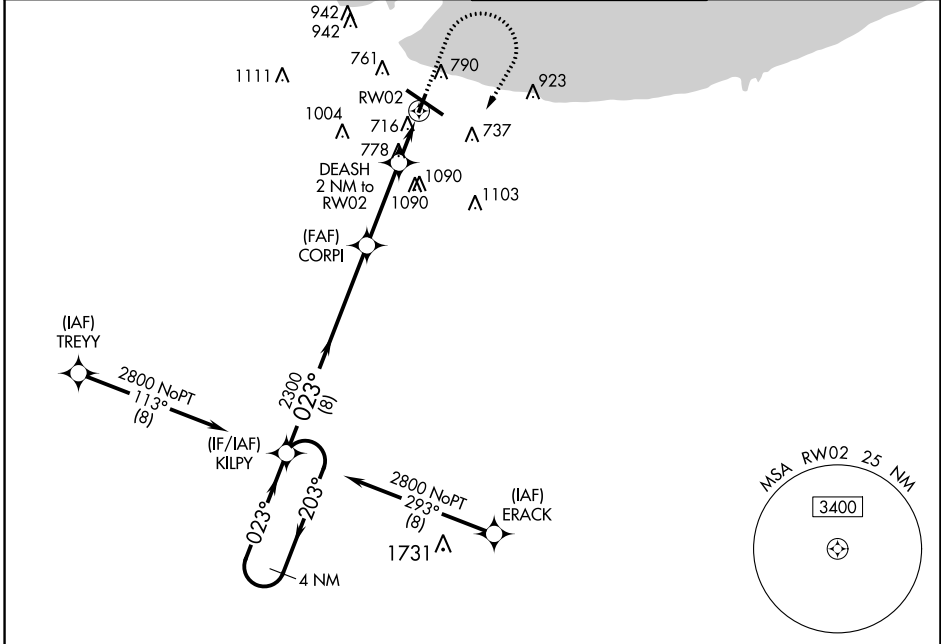
GARY/CHICAGO INTL (GYY)

RNP APCH - GPS.

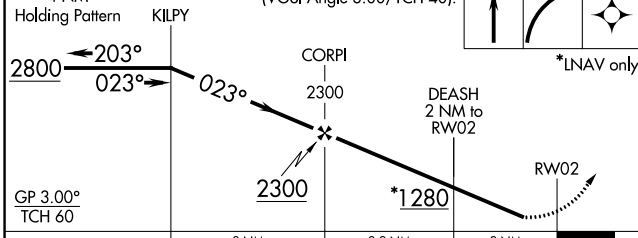
▼ For uncompensated Baro-VNAV systems, LNAV/VNAV NA below -16°C or above 54°C.  
 ⚠ Rwy 2 helicopter visibility reduction below 3/4 SM NA. When local altimeter setting not received, use Chicago Midway Intl altimeter setting; increase LPV DA to 947 feet and visibility 1/8 SM, LNAV/VNAV DA to 1135 feet and visibility 1/4 SM; increase all MDAs 60 feet and Circling Cats C and D visibility 1/4 SM. Baro-VNAV NA when using Chicago Midway Intl altimeter setting.

MISSED APPROACH: Climb to 2000 then climbing right turn to 2800 direct KILPY and hold.

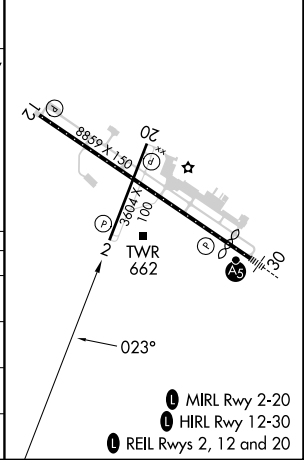
ATIS <b>134.575</b>	CHICAGO APP CON <b>133.1 285.6</b>	GARY TOWER ★ <b>125.6 (CTAF) 0</b>	GND CON <b>121.9</b>
------------------------	---------------------------------------	---------------------------------------	-------------------------



4 NM Holding Pattern KILPY	VGSI and RNAV glidepath not coincident (VGSI Angle 3.00/TCH 40).	2000	2800	KILPY	ELEV 597	D TDZE 591
----------------------------	------------------------------------------------------------------	------	------	-------	----------	------------



CATEGORY	A	B	C	D
LPV DA	901-7/8 310 (400-7/8)			
LNAV/VNAV DA	1089-1 3/8 498 (500-1 3/8)			
LNAV MDA	1040-1	449 (500-1)	1040-1 3/8	449 (500-1 3/8)
<b>C</b> CIRCLING	1140-1 543 (600-1)	1180-1 583 (600-1)	1400-2 1/4 803 (900-2 1/4)	1420-2 3/4 823 (900-2 3/4)



EC-2, 22 FEB 2024 to 21 MAR 2024