

| | | | |
|--|------------------------|-----------------------------|---------------------------------------|
| WAAS CH 42718 W36A | APP CRS 360° | Rwy ldg TDZE Apt Elev | 5001 42 46 |
|--|------------------------|-----------------------------|---------------------------------------|

RNAV (GPS) RWY 36

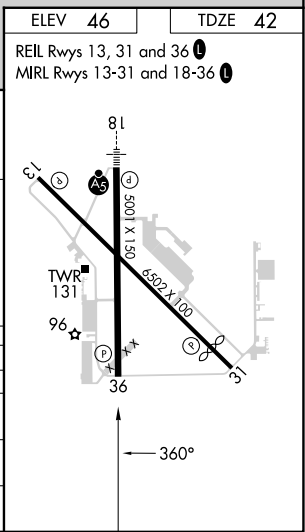
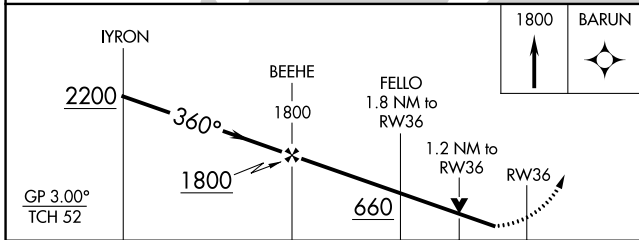
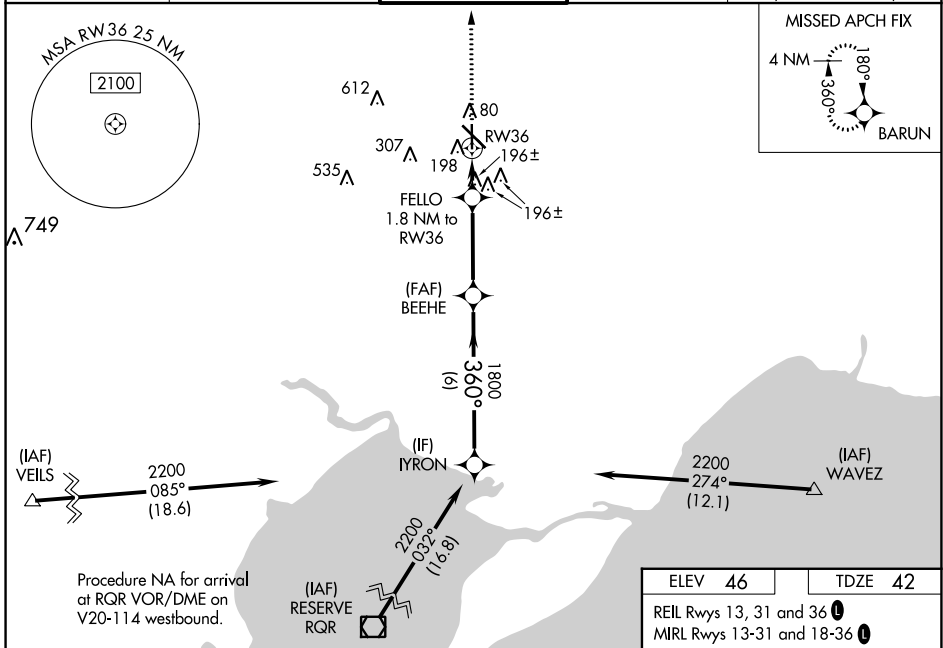
HAMMOND NORTHSORE RGNL (HDC)

RNP APCH - GPS.

⚠ Baro-VNAV and VDP NA when using Louis Armstrong New Orleans Intl altimeter setting. Rwy 36 helicopter visibility reduction below 3/4 SM NA. For uncompensated Baro-VNAV systems, LNAV/VNAV NA below -15°C or above 54°C. When local altimeter setting not received, use Louis Armstrong New Orleans Intl altimeter setting and increase LPV DA to 374 feet and all visibilities 1/4 SM; increase LNAV/VNAV DA to 528 feet and all visibilities 1/4 SM; increase all MDAs 100 feet and LNAV visibility Cat C/D 1/4 SM, and Circling visibility Cat C/D 1/2 SM.

MISSED APPROACH:
Climb to 1800 direct BARUN and hold.

| | | | | |
|------------------------|--|---|--------------------------|---|
| ATIS 118.325 | NEW ORLEANS APP CON 119.3 350.35 | HAMMOND TOWER ★ 120.575 (CTAF) 0 | GND CON 119.85 | CLNC DEL 119.3 (When twr closed) |
|------------------------|--|---|--------------------------|---|



| CATEGORY | A | B | C | D |
|-------------------|-----------|-------------|------------------------------|------------------------------|
| LPV DA | 292-3/4 | | 250 (300-3/4) | |
| LNAV/VNAV DA | 446-1 1/8 | | 404 (400-1 1/8) | |
| LNAV MDA | 460-1 | 418 (500-1) | 460-1 1/8 | 418 (500-1 1/8) |
| C CIRCLING | 500-1 | 454 (500-1) | 620-1 1/2 574 (600-1 1/2) | 920-2 3/4 874 (900-2 3/4) |

SC-4, 22 FEB 2024 to 21 MAR 2024

SC-4, 22 FEB 2024 to 21 MAR 2024