

MOLOKAI FIVE DEPARTURE

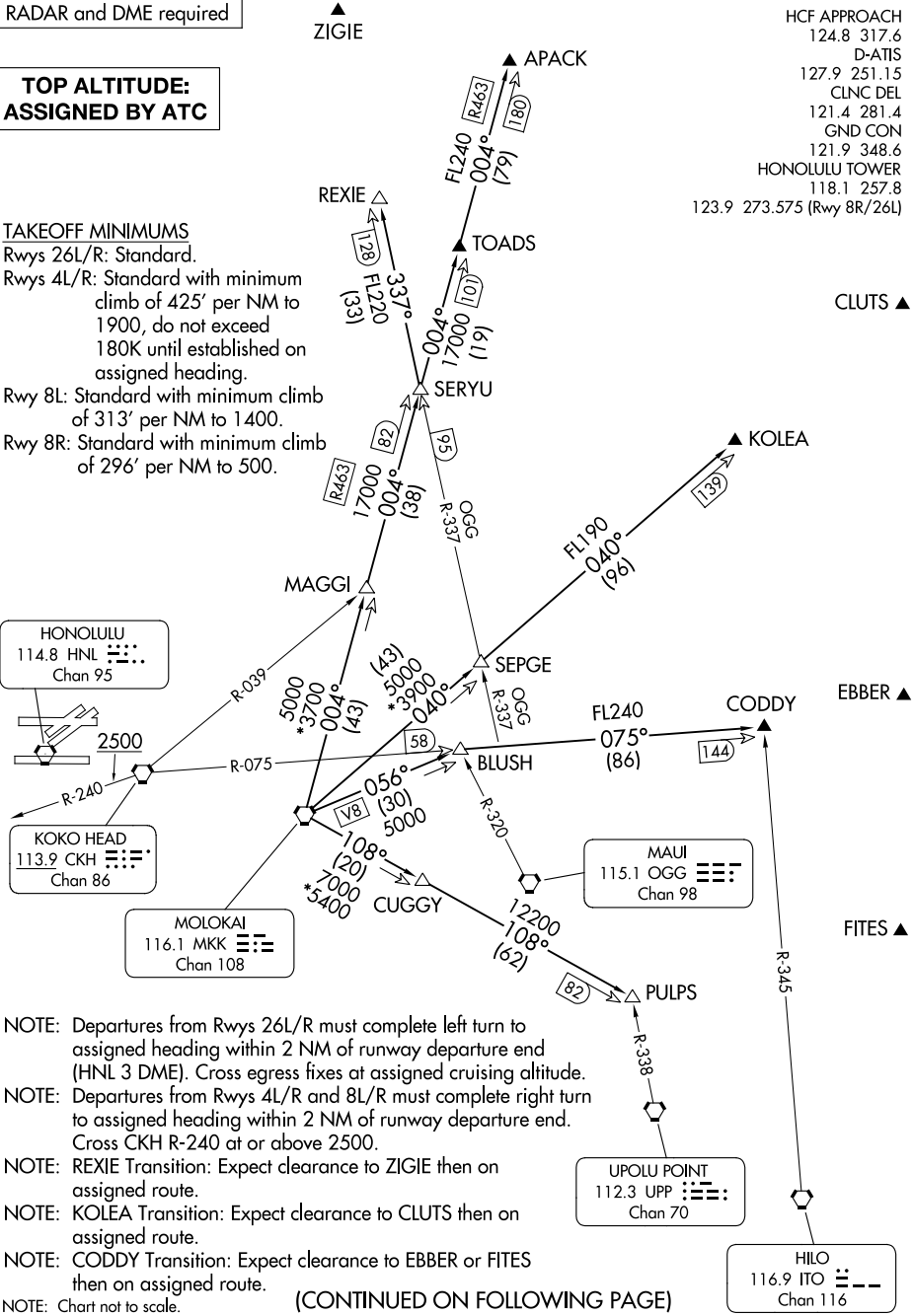
RADAR and DME required

**TOP ALTITUDE:
ASSIGNED BY ATC**

TAKEOFF MINIMUMS

Rwys 26L/R: Standard.
 Rwys 4L/R: Standard with minimum climb of 425' per NM to 1900, do not exceed 180K until established on assigned heading.
 Rwy 8L: Standard with minimum climb of 313' per NM to 1400.
 Rwy 8R: Standard with minimum climb of 296' per NM to 500.

HCF APPROACH
 124.8 317.6
 D-ATIS
 127.9 251.15
 CLNC DEL
 121.4 281.4
 GND CON
 121.9 348.6
 HONOLULU TOWER
 118.1 257.8
 123.9 273.575 (Rwy 8R/26L)



- NOTE: Departures from Rwys 26L/R must complete left turn to assigned heading within 2 NM of runway departure end (HNL 3 DME). Cross egress fixes at assigned cruising altitude.
- NOTE: Departures from Rwys 4L/R and 8L/R must complete right turn to assigned heading within 2 NM of runway departure end. Cross CKH R-240 at or above 2500.
- NOTE: REXIE Transition: Expect clearance to ZIGIE then on assigned route.
- NOTE: KOLEA Transition: Expect clearance to CLUTS then on assigned route.
- NOTE: CODDY Transition: Expect clearance to EBBER or FITES then on assigned route.

(CONTINUED ON FOLLOWING PAGE)

PAC, 25 JAN 2024 to 21 MAR 2024

PAC, 25 JAN 2024 to 21 MAR 2024

MOLOKAI FIVE DEPARTURE



DEPARTURE ROUTE DESCRIPTION

Turn right/left to heading as assigned by Tower, expect vectors to MKK VORTAC, maintain 5000; then on transition. Expect clearance to enroute altitude/flight level at MKK VORTAC. Cross egress fixes REXIE, APACK, KOLEA, and CODDY at assigned cruising altitude, unless otherwise advised by ATC.

APACK TRANSITION (MKK5.APACK): From over MKK VORTAC on MKK R-004 to APACK.

CODDY TRANSITION (MKK5.CODDY): From over MKK VORTAC on MKK R-056 and CKH R-075 to CODDY.

KOLEA TRANSITION (MKK5.KOLEA): From over MKK VORTAC on MKK R-040 to KOLEA.

PULPS TRANSITION (MKK5.PULPS): From over MKK VORTAC on MKK R-108 to PULPS.

REXIE TRANSITION (MKK5.REXIE): From over MKK VORTAC on MKK R-004 and OGG R-337 to REXIE.

PAC, 25 JAN 2024 to 21 MAR 2024

PAC, 25 JAN 2024 to 21 MAR 2024