

WAAS CH 99316 W08A	APP CRS 077°	Rwy Idg TDZE Apt Elev	5205 2585 2591
--	------------------------	-----------------------------	---

RNAV (GPS) RWY 8

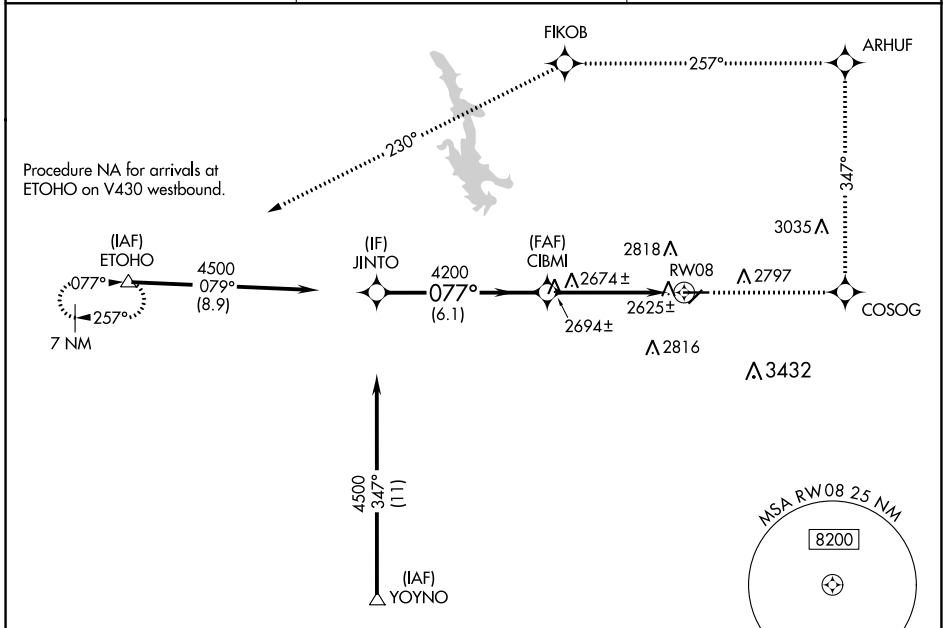
HAVRE CITY-COUNTY (HVR)

RNP APCH-GPS.

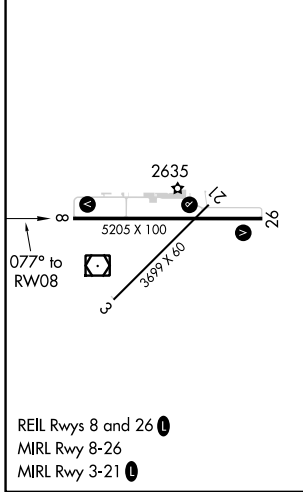
⚠ For uncompensated Baro-VNAV systems,
⚠ LNAV/VNAV NA below -20°C or above 54°C.

MISSED APPROACH: Climb to 8000 direct COSOG and left on track 347° to ARHUF and left turn on track 257° to FIKOB and on track 230° to ETOHO and hold.

ASOS 135.225	SALT LAKE CENTER 133.4 285.4	UNICOM 122.8 (CTAF)
------------------------	--	-------------------------------



ELEV 2591	D	TDZE 2585
-----------	----------	-----------



Procedure Turn NA

8000	COSOG	ARHUF	FIKOB	ETOHO
↑	⬅	↙	⬅	△
	tr 347°	tr 257°	tr 230°	

* LNAV only.

GP 3.00° TCH 40	4500	4200	2635
	077°	347°	257°
	6.1 NM	3.6 NM	1.3 NM

CATEGORY	A	B	C	D
LPV DA	2835-1 250 (300-1)			
LNAV/VNAV DA	2906-1¼ 321 (400-1¼)			
LNAV MDA	3020-1	435 (500-1)	3020-1¼ 435 (500-1¼)	3020-1½ 435 (500-1½)
CIRCLING	3080-1 489 (500-1)	3120-1 529 (600-1)	3360-2¼ 769 (800-2¼)	3740-3 1149 (1200-3)

NW-1, 22 FEB 2024 to 21 MAR 2024

NW-1, 22 FEB 2024 to 21 MAR 2024