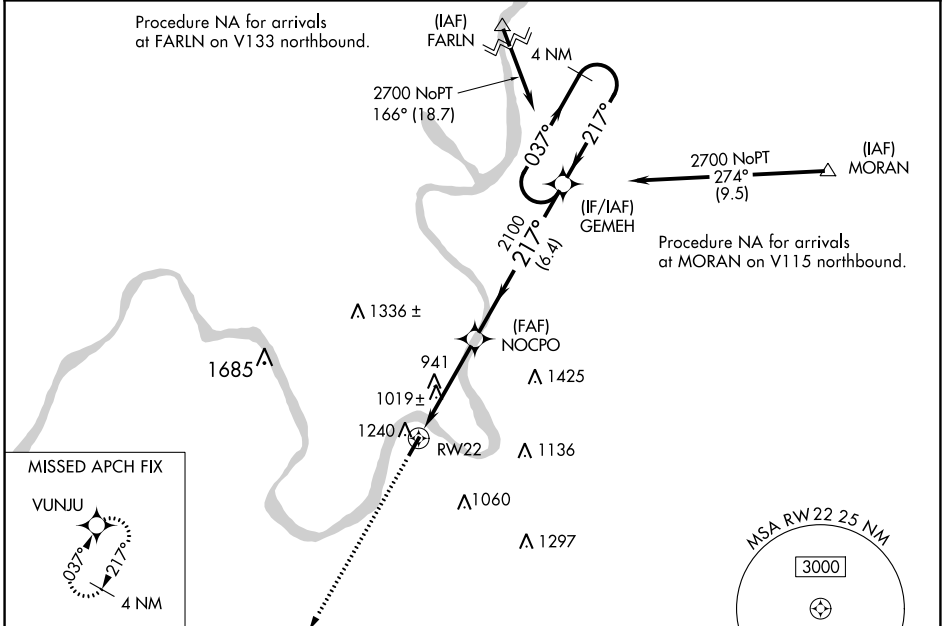


|  |                        |   |             |
|--|------------------------|---|-------------|
| WAAS<br>CH <b>61323</b><br><b>W22A</b> | APP CRS<br><b>217°</b> | Rwy Idg<br>TDZE <b>758</b><br>Apt Elev <b>758</b> | <b>4000</b> |
|--|------------------------|---|-------------|

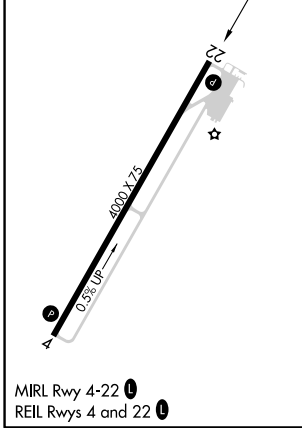
# RNAV (GPS) RWY 22

JACKSON COUNTY (I18)

|  |  |   |  |
|--|--|---|--|
| RNP APCH.  |  | MISSED APPROACH:<br>Climb to 2600 direct<br>VUNJU and hold. |  |
| <p>When local altimeter setting not received, use Point Pleasant altimeter setting and increase all MDA 60 feet; increase LP and LNAV Cat C visibility ¼ mile. Circling Rwy 4 NA at night. Rwy 22 helicopter visibility reduction below ¾ SM NA.</p> |  |   |  |
| AWOS-2<br><b>121.3</b>   | HUNTINGTON APP CON<br><b>128.4 270.1</b> | UNICOM<br><b>122.8 (CTAF) 0</b>                             |  |



|          |          |
|----------|----------|
| ELEV 758 | TDZE 758 |
|----------|----------|



|          |                       |  |                         |                      |
|----------|-----------------------|--|-------------------------|----------------------|
| 2600     | VUNJU                 | VGSI and descent angles not coincident (VGSI Angle 4.00/TCH 50). |                         | 4 NM Holding Pattern |
|          |                       |  |                         |                      |
| CATEGORY | A                     | B  | C                       | D                    |
| LP MDA   | 1280-1                | 522 (600-1)  | 1280-1½<br>522 (600-1½) | NA                   |
| LNAV MDA | 1540-1<br>782 (800-1) | 1540-1¼<br>782 (800-1¼)  | 1540-2½<br>782 (800-2½) | NA                   |
| CIRCLING | 1600-1¼               | 842 (900-1¼)   | 1600-2½<br>842 (900-2½) | NA                   |

NE-4, 22 FEB 2024 to 21 MAR 2024

NE-4, 22 FEB 2024 to 21 MAR 2024