

LOC/DME I-ABI 110.3 Chan 40	APP CRS 355°	Rwy Idg 7198 TDZE 1776 Apt Elev 1791
---	------------------------	---

ILS or LOC RWY 35R

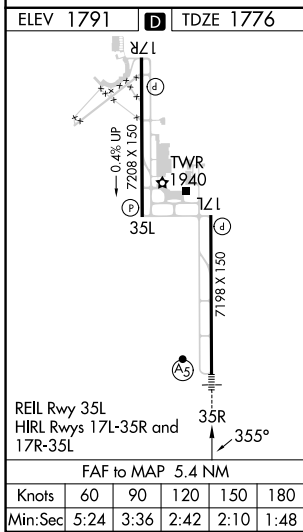
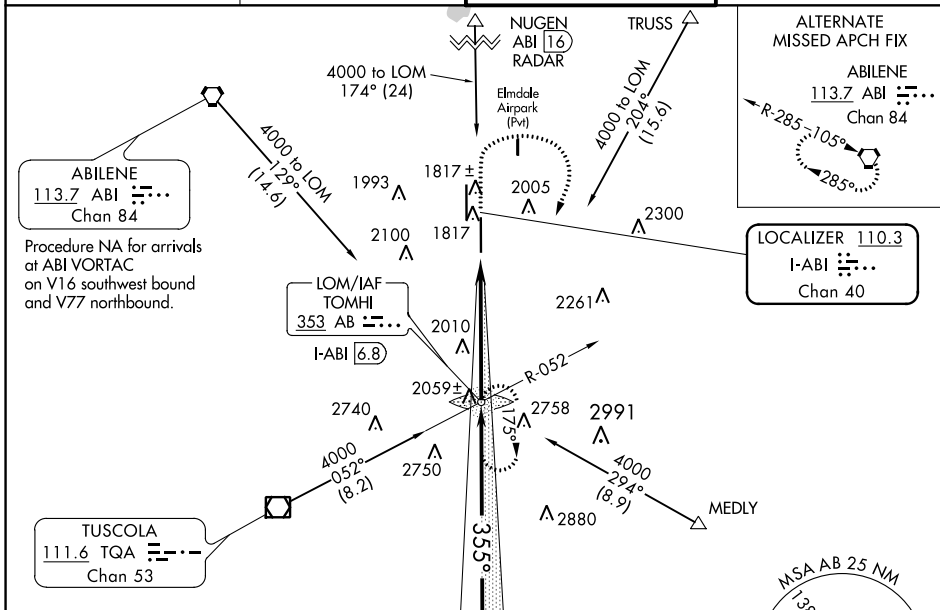
ABILENE RGNL (ABI)

ADF required. RADAR required for procedure entry at NUGEN.

For inop ALS, increase S-ILS 35R Cat E visibility to RVR 4000, and S-LOC 35R Cat C/D/E visibility to 1 3/8 SM.
** RVR 1800 authorized with use of FD or AP or HUD to DA.

MALSRL
MISSED APPROACH: Climb to 3300 then climbing right turn to 4000 direct TOMHI LOM/INT/I-ABI 6.8 DME and hold.

ATIS 118.25	ABILENE APP CON 125.0 336.3 (EAST) 127.2 282.3 (WEST)	ABILENE TOWER 120.1 257.8	GND CON 121.7 348.6
-----------------------	---	-------------------------------------	-------------------------------



3300	4000	TOMHI	TOMHI LOM/INT I-ABI 6.8			Remain within 15 NM
*LOC only.			3573	175°	4000	GS 3.00° TCH 58
			3573	355°	3600	
			1.3	4.1 NM		
CATEGORY	A	B	C	D	E	
S-ILS 35R**	1976/24		200 (200-1/2)			
S-LOC 35R	2260/24	484 (500-1/2)	2260/50 484 (500-1)			
C CIRCLING	2300-1 509 (600-1)	2320-1 529 (600-1)	2420-1 3/4 629 (700-1 3/4)	2460-2 669 (700-2)	2620-3 829 (900-3)	

LOC/DME I-EMB 109.75 Chan 34 (Y)	APP CRS 175°	Rwy Idg TDZE Apt Elev 7202 1771 1791
--	------------------------	--

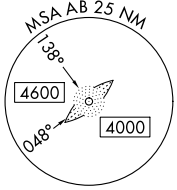
LOC RWY 17R

ABILENE RGNL (ABI)

ADF required for missed approach.

MISSED APPROACH: Climb to 2800 then climbing left turn to 4000 direct TOMHI LOM and hold.

ATIS 118.25	ABILENE APP CON 125.0 338.3 (EAST) 127.2 282.3 (WEST)	ABILENE TOWER 120.1 257.8	GND CON 121.7 348.6
-----------------------	---	-------------------------------------	-------------------------------



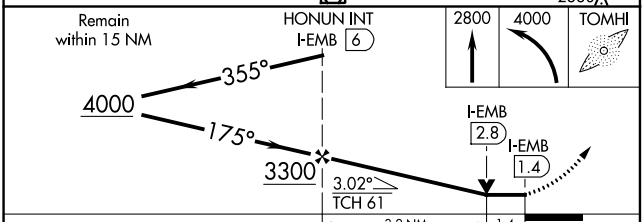
Procedure NA for arrival on ABI VORTAC
airway radials 037 CW 099.

ABILENE
113.7 ABI Chan 84

ALTERNATE MISSED APCH FIX
ABILENE
113.7 ABI Chan 84

Procedure NA for arrival on TQA VOR/DME
airway radial 082.

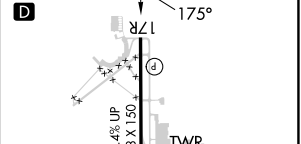
TUSCOLA
111.6 TQA Chan 53



LOCALIZER 109.75
I-EMB Chan 34(Y)

LOM TOMHI
353 AB

ELEV 1791	TDZE 1771
-----------	-----------



CATEGORY	A	B	C	D	E	REIL Rwy 35L HIRL Rwys 17L-35R and 17R-35L
	S-LOC 17R	2280-1	509 (500-1)	2280-1 ³ / ₈	509 (500-1 ³ / ₈)	
CIRCLING	2300-1	2320-1	2420-1 ³ / ₄	2460-2	2620-3	Knots 60 90 120 150 180 Min:Sec 4:36 3:04 2:18 1:50 1:32
	509 (600-1)	529 (600-1)	629 (700-1 ³ / ₄)	669 (700-2)	829 (900-3)	

SC-2, 22 FEB 2024 to 21 MAR 2024

SC-2, 22 FEB 2024 to 21 MAR 2024

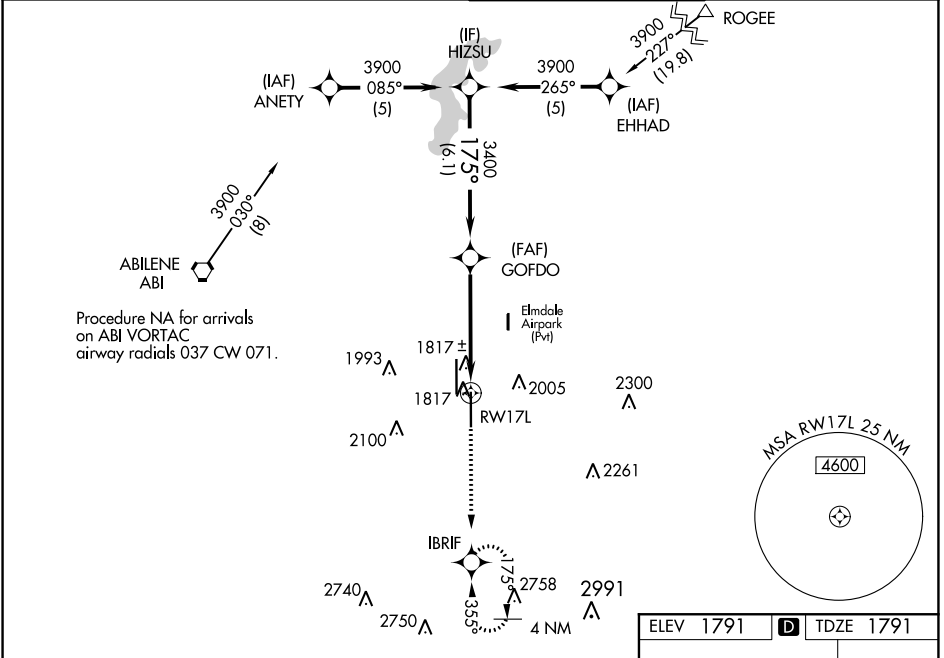
WAAS CH 50317 W17A	APP CRS 175°	Rwy Idg TDZE Apt Elev	7198 1791 1791
--	------------------------	-----------------------------	---

RNAV (GPS) RWY 17L

ABILENE RGNL (ABI)

RNP APCH.	MISSED APPROACH: Climb to 4000 direct IBRIF and hold, continue climb-in-hold to 4000.
<p>⚠ For uncompensated Baro-VNAV systems, LNAV/VNAV NA below -18°C or above 45°C.</p>	

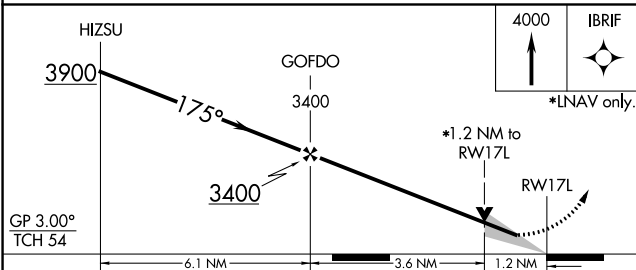
ATIS 118.25	ABILENE APP CON 125.0 338.3 (EAST) 127.2 282.3 (WEST)	ABILENE TOWER 120.1 257.8	GND CON 121.7 348.6
-----------------------	---	-------------------------------------	-------------------------------



Procedure NA for arrivals on ABI VORTAC airway radials 037 CW 071.

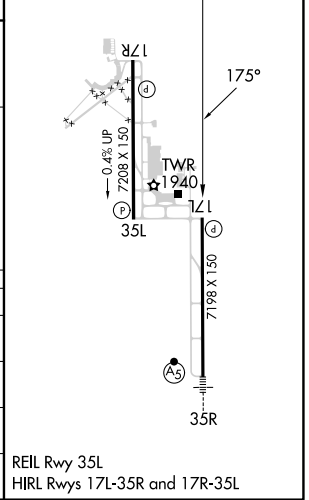
SC-2, 22 FEB 2024 to 21 MAR 2024

SC-2, 22 FEB 2024 to 21 MAR 2024



ELEV 1791	D TDZE 1791
-----------	--------------------

CATEGORY	A	B	C	D	E
LPV DA	2041-3/4		250 (300-3/4)		
LNAV/VNAV DA	2171-1 1/4		380 (400-1 1/4)		
LNAV MDA	2240-1	449 (500-1)	2240-1 3/8		449 (500-1 3/8)
C CIRCLING	2300-1 509 (600-1)	2320-1 529 (600-1)	2420-1 3/4 629 (700-1 3/4)	2460-2 669 (700-2)	2620-3 829 (900-3)



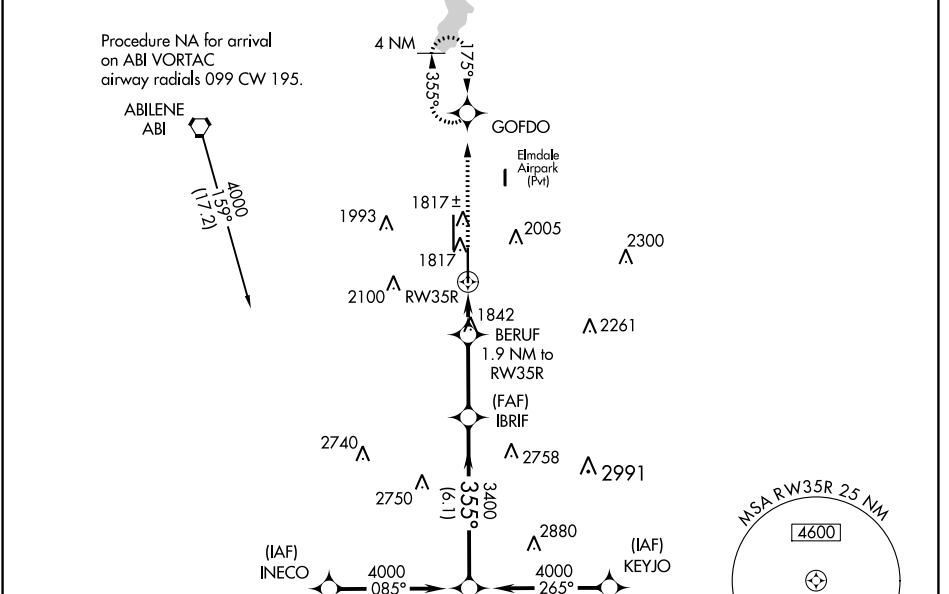
REIL Rwy 35L
HIRL Rwy 17L-35R and 17R-35L

WAAS CH 97517 W35A	APP CRS 355°	Rwy Idg TDZE Apt Elev	7198 1776 1791
--	------------------------	-----------------------------	---

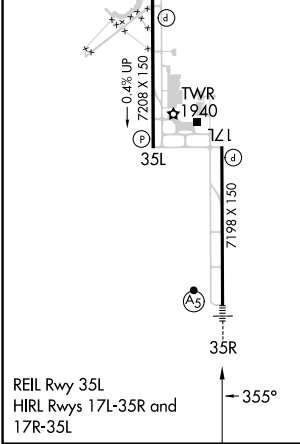
RNAV (GPS) RWY 35R

ABILENE RGNL (ABI)

RNP APCH.		MALSR	MISSED APPROACH: Climb to 4000 direct GOFDO and hold, continue climb-in-hold to 4000.
ATIS 118.25	ABILENE APP CON 125.0 338.3 (EAST) 127.2 282.3 (WEST)	ABILENE TOWER 120.1 257.8	GND CON 121.7 348.6



ELEV 1791	D	TDZE 1776
-----------	----------	-----------



4000	GOFDO	IBRIF	NILSE		
*LNAV only.	BERUF 1.9 NM to RW35R	3400	4000		
*1.3 NM to RW35R	*2440	3400	GP 3.00° TCH 58		
-1.3 NM	0.6	3 NM	6.1 NM		
CATEGORY	A	B	C	D	E
LPV	DA**	1976/24 200 (200-½)			
LNAV/VNAV	DA	2189/40 413 (400-¾)			2189/50 413 (400-1)
LNAV MDA	2260/24 484 (500-½)		2260/50 484 (500-1)		
C CIRCLING	2300-1 509 (600-1)	2320-1 529 (600-1)	2420-1¾ 629 (700-1¾)	2460-2 669 (700-2)	2620-3 829 (900-3)

VOR ABI 113.7 Chan 84	APP CRS 105°	Rwy Idg TDZE Apt Elev N/A N/A 1791
---	------------------------	--

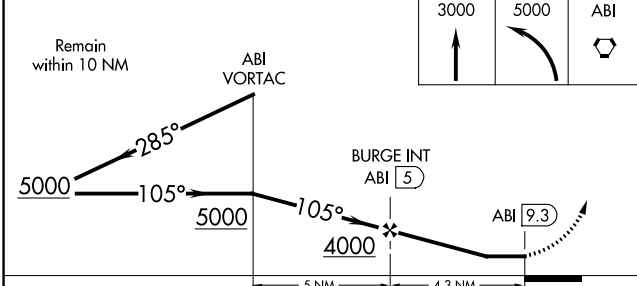
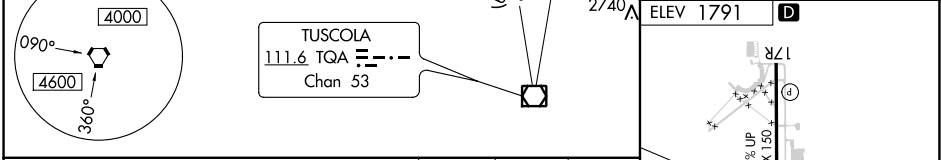
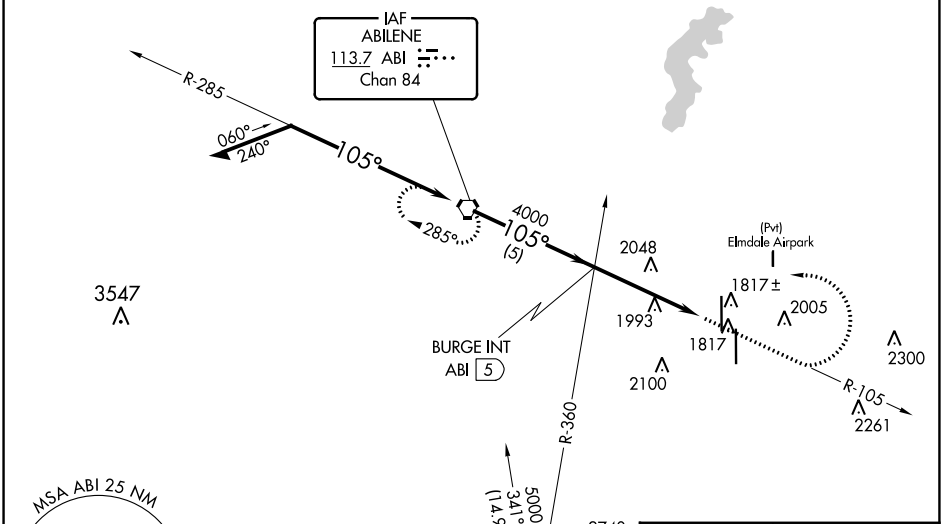
VOR or GPS-A

ABILENE RGNL (ABI)

MISSED APPROACH: Climb to 3000, then dimbing left turn to 5000 direct ABI VORTAC and hold.

ATIS 118.25	ABILENE APP CON 125.0 338.3 (EAST) 127.2 282.3 (WEST)	ABILENE TOWER 120.1 257.8	GND CON 121.7 348.6
-----------------------	---	-------------------------------------	-------------------------------

NoPT for arrivals on ABI VORTAC
airway radials 195 CW 318.



CATEGORY	A	B	C	D	FAF to MAP 4.3 NM					
CIRCLING	2300-1 509 (600-1)	2320-1 529 (600-1)	2420-1¾ 629 (700-1¾)	2460-2 669 (700-2)	Knots	60	90	120	150	180
					Min:Sec	4:18	2:52	2:09	1:43	1:26

SC-2, 22 FEB 2024 to 21 MAR 2024

SC-2, 22 FEB 2024 to 21 MAR 2024