

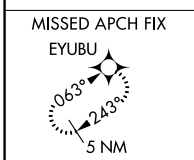
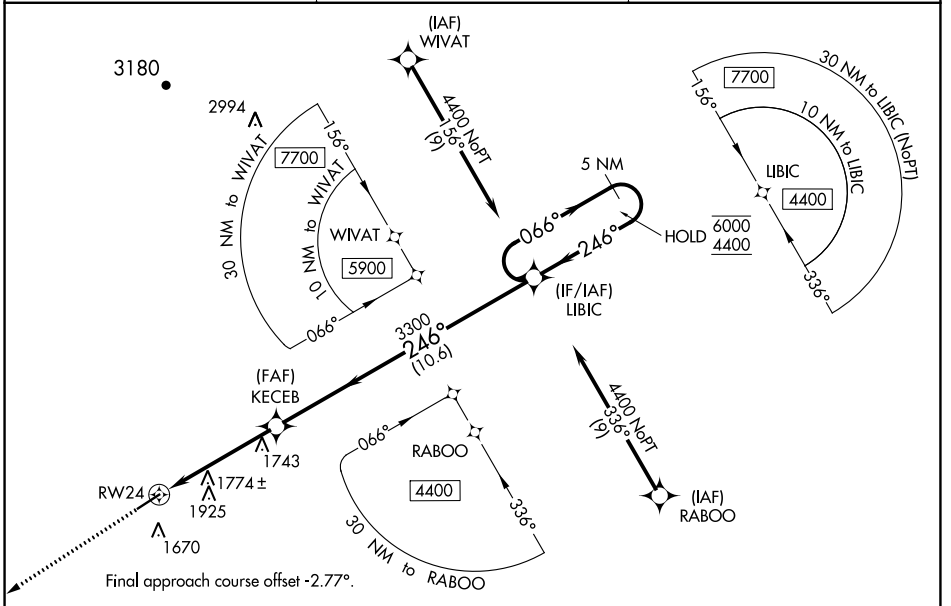
WAAS CH 49121 W24A	APP CRS 246°	Rwy Idg TDZE 1448 Apt Elev 1448
--	------------------------	---

RNAV (GPS) RWY 24

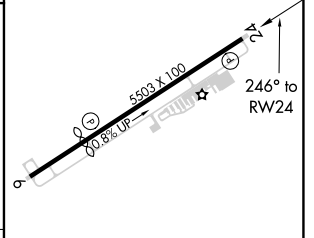
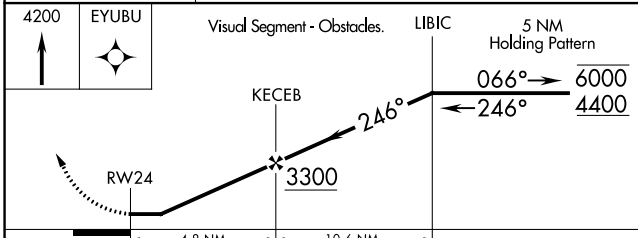
HABERSHAM COUNTY (AJR)

RNP APCH - GPS.		MISSED APPROACH: Climb to 4200 direct EYUBU and hold.
	Rwy 24 helicopter visibility reduction below 1 SM NA. Procedure NA at night.	

AWOS-3 119.175	ATLANTA CENTER 134.8 379.95	UNICOM 122.7 (CTAF) 0
--------------------------	---------------------------------------	---------------------------------



ELEV 1448	D	TDZE 1448
-----------	----------	-----------



CATEGORY	A	B	C	D
LP MDA	2000-1	552 (600-1)	2000-1 ⁵ / ₈	552 (600-1 ⁵ / ₈)
RNAV MDA	2040-1	592 (600-1)	2040-1 ³ / ₄	592 (600-1 ³ / ₄)
C CIRCLING	2100-1 652 (700-1)	2280-1 ¹ / ₄ 832 (900-1 ¹ / ₄)	2280-2 ¹ / ₂ 832 (900-2 ¹ / ₂)	2280-2 ³ / ₄ 832 (900-2 ³ / ₄)

MIRL Rwy 6-24 0

SE-4, 19 MAY 2022 to 16 JUN 2022

SE-4, 19 MAY 2022 to 16 JUN 2022

WAAS CH 50321 W06A	APP CRS 063°	Rwy Idg TDZE 1446 Apt Elev 1448	4111
--	------------------------	---	-------------

RNAV (GPS) RWY 6

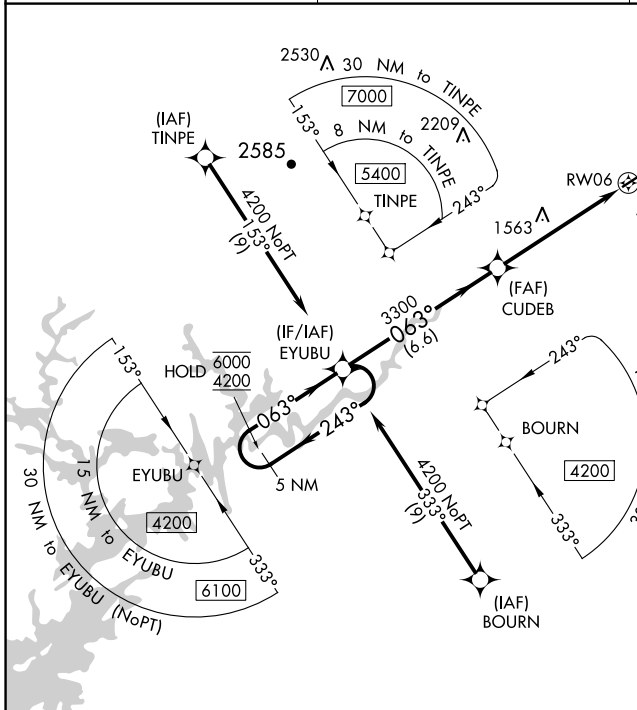
HABERSHAM COUNTY (AJR)

RNP APCH - GPS.

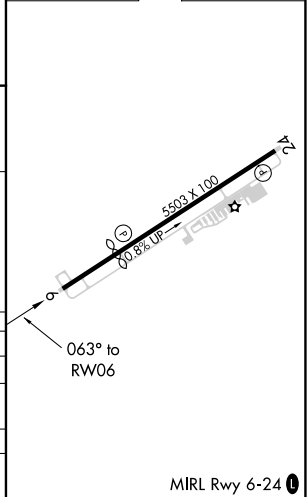
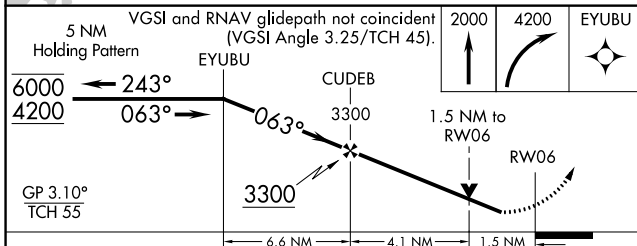
⚠ Circling Rwy 24 NA at night. Rwy 6 helicopter visibility reduction below 3/4 SM NA. For uncompensated Baro-VNAV systems, LNAV/VNAV NA below -17°C or above 54°C.

MISSED APPROACH: Climb to 2000 then climbing right turn to 4200 direct EYUBU and hold.

AWOS-3 119.175	ATLANTA CENTER 134.8 379.95	UNICOM 122.7 (CTAF) 0
--------------------------	---------------------------------------	---------------------------------



ELEV 1448	D	TDZE 1446
-----------	----------	-----------



CATEGORY	A	B	C	D
LPV DA		1710-7/8	264 (300-7/8)	
LNAV/VNAV DA		1824-1	378 (400-1)	
LNAV MDA	1980-1	534 (600-1)	1980-1 1/2	534 (600-1 1/2)
C CIRCLING	2100-1 652 (700-1)	2280-1 1/4 832 (900-1 1/4)	2280-2 1/2 832 (900-2 1/2)	2280-2 3/4 832 (900-2 3/4)

MIRL Rwy 6-24 0

SE-4, 19 MAY 2022 to 16 JUN 2022

SE-4, 19 MAY 2022 to 16 JUN 2022