

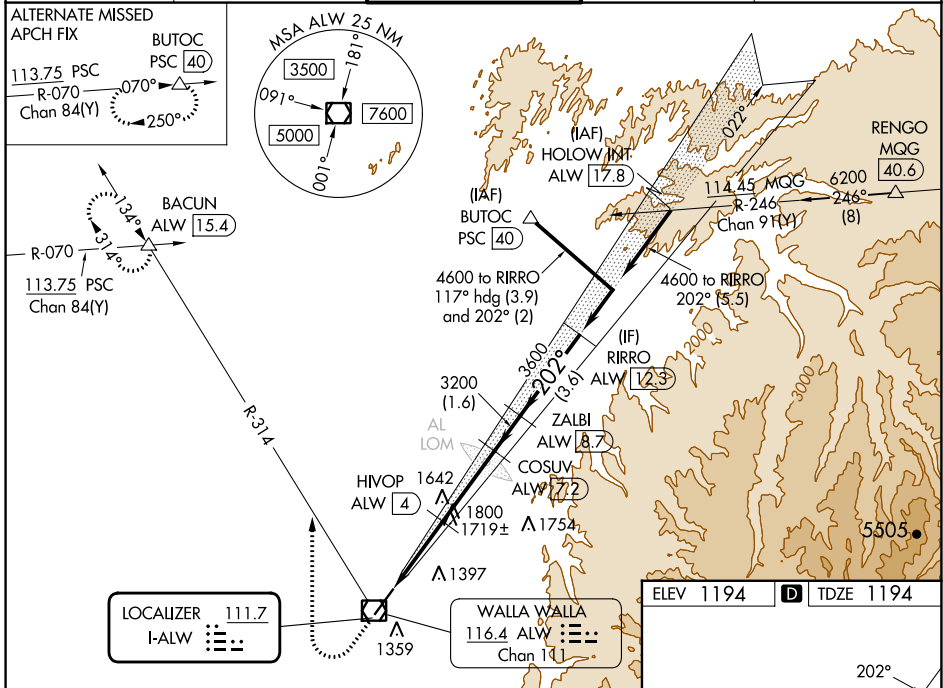
LOC I-ALW 111.7	APP CRS 202°	Rwy Ldg TDZE Apt Elev	6527 1194 1194
---------------------------	------------------------	-----------------------------	-------------------------------------------

ILS or LOC RWY 20

WALLA WALLA RGNL (ALW)

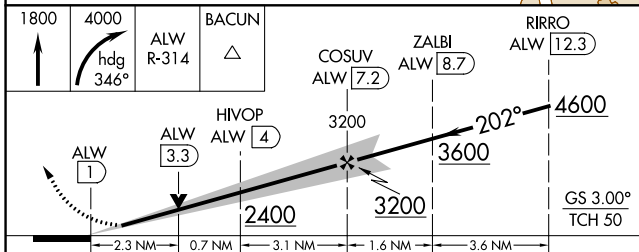
DME required.	MALSRL	MISSED APPROACH: Climb to 1800 then climbing right turn to 4000 on heading 346° and ALW VOR/DME R-314 to BACUN INT/ALW 15.4 DME and hold.
<p>▼ DME from ALW VOR/DME. Simultaneous reception of I-ALW and ALW VOR/DME required. For inop ALS, increase S-LOC 20 Cat C/D visibility to 2½ SM.</p> <p>▲ #RVR 1800 authorized with use of FD or AP or HUD to DA (NA when using Pendleton altimeter setting).</p>		

ASOS 135.875	SPOKANE APP CON* 133.15 379.15	WALLA WALLA TOWER* 118.5 (CTAF) 289.4	GND CON 121.6 289.4	UNICOM 122.95
------------------------	------------------------------------------	-------------------------------------------------	-------------------------------	-------------------------

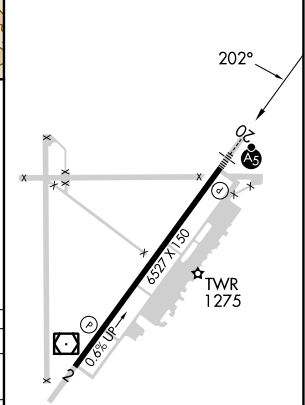


NW-1, 22 FEB 2024 to 21 MAR 2024

NW-1, 22 FEB 2024 to 21 MAR 2024



ELEV 1194	TDZE 1194
-----------	-----------



CATEGORY	A	B	C	D
S-ILS 20#	1394/24		200 (200-½)	
S-LOC 20	1980/24 786 (800-½)	1980/40 786 (800-¾)	1980-1¾ 786 (800-1¾)	
CIRCLING	1980-1 786 (800-1)	1980-1¼ 786 (800-1¼)	2120-2¾ 926 (1000-2¾)	2300-3 1106 (1200-3)

REIL Rwy 2
HIRL Rwy 2-20

WAAS CH 72805 W02A	APP CRS 022°	Rwy Idg TDZE 1175 Apt Elev 1194	6527
----------------------------------------	------------------------	-----------------------------------------------------	-------------

RNAV (GPS) RWY 2

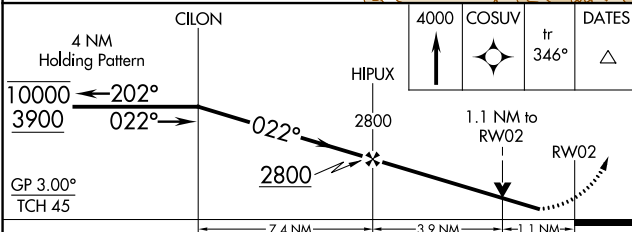
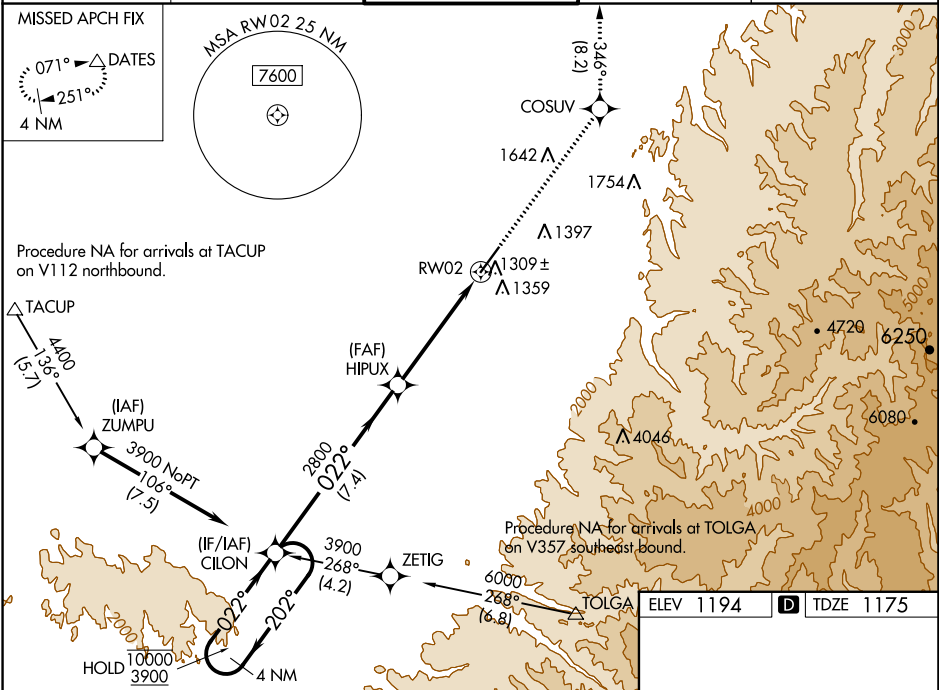
WALLA WALLA RGNL (ALW)

RNP APCH - GPS.

⚠ Rwy 2 helicopter visibility reduction below $\frac{3}{4}$ SM NA. For uncompensated Baro-VNAV systems, LNAV/VNAV NA below -11°C or above 54°C.

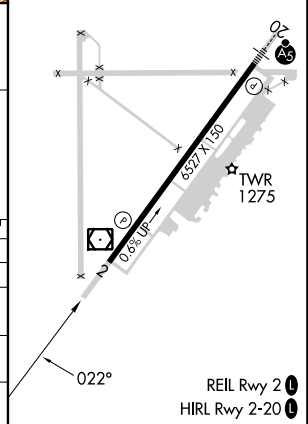
MISSED APPROACH: Climb to 4000 direct COSUV and on track 346° to DATES and hold.

ASOS 135.875	SPOKANE APP CON * 133.15 379.15	WALLA WALLA TOWER * 118.5 (CTAF) 289.4	GND CON 121.6 289.4	UNICOM 122.95
------------------------	-------------------------------------------	--------------------------------------------------	-------------------------------	-------------------------



ELEV 1194 **D** TDZE 1175

CATEGORY	A	B	C	D
LPV DA		1375- $\frac{3}{4}$	200 (200- $\frac{3}{4}$)	
LNAV/VNAV DA		1511-1	336 (400-1)	
LNAV MDA	1560-1	385 (400-1)	1560-1 $\frac{1}{8}$	385 (400-1 $\frac{1}{8}$)
C CIRCLING	1760-1 566 (600-1)	1820-1 626 (700-1)	2120-2 $\frac{3}{4}$ 926 (1000-2 $\frac{3}{4}$)	2300-3 1106 (1200-3)



NW-1, 22 FEB 2024 to 21 MAR 2024

NW-1, 22 FEB 2024 to 21 MAR 2024

WAAS CH 90299 W20A	APP CRS 202°	Rwy ldg TDZE 6527 1194 Apt Elev 1194
----------------------------------------	------------------------	--------------------------------------------------------------------

RNAV (GPS) RWY 20

WALLA WALLA RGNL (ALW)

RNP APCH - GPS.

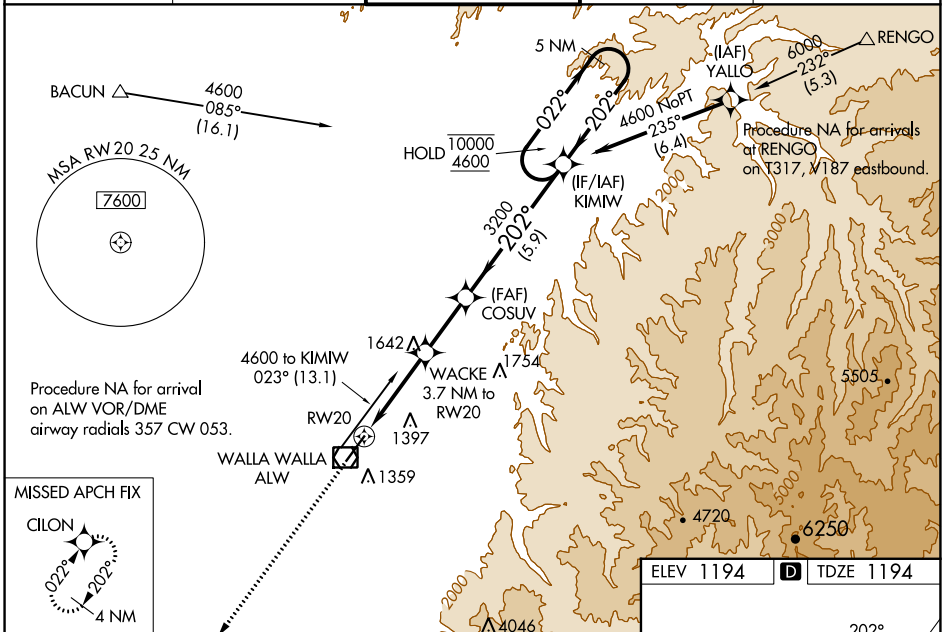
▽
▲

For uncompensated Baro-VNAV systems, LNAV/VNAV NA below -11°C or above 54°C. For inop ALS, increase LNAV/VNAV visibility to 1% SM. *RVR 1800 authorized with use of FD or AP or HUD to DA.

MALSRL

MISSED APPROACH:
Climb to 4000 direct CILON and hold.

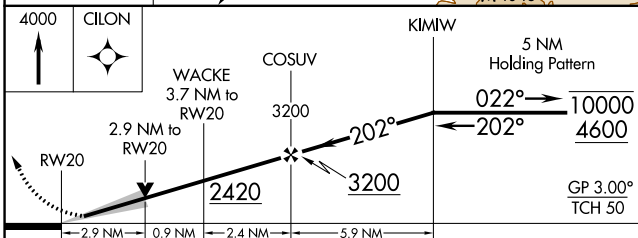
ASOS 135.875	SPOKANE APP CON* 133.15 379.15	WALLA WALLA TOWER* 118.5 (CTAF) 289.4	GND CON 121.6 289.4	UNICOM 122.95
------------------------	------------------------------------------	-------------------------------------------------	-------------------------------	-------------------------



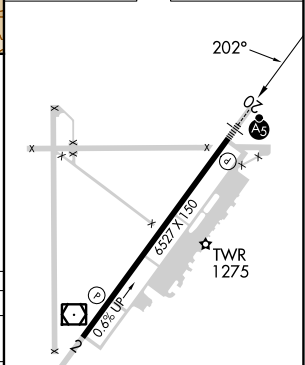
MISSED APCH FIX

CILON

022°
202°
4 NM



ELEV 1194	TDZE 1194
-----------	-----------



CATEGORY	A	B	C	D
LPV DA*	1394/24		200 (200-½)	
LNAV/VNAV DA	1773-1¼		579 (600-1¼)	
LNAV MDA	2160/40 966 (1000-¾)	2160/55 966 (1000-1)	2160-2½	966 (1000-2½)
CIRCLING	2160-1¼ 966 (1000-1¼)	2160-1½ 966 (1000-1½)	2160-3 966 (1000-3)	2300-3 1106 (1200-3)

REIL Rwy 2
HIRL Rwy 2-20

NW-1, 22 FEB 2024 to 21 MAR 2024

NW-1, 22 FEB 2024 to 21 MAR 2024

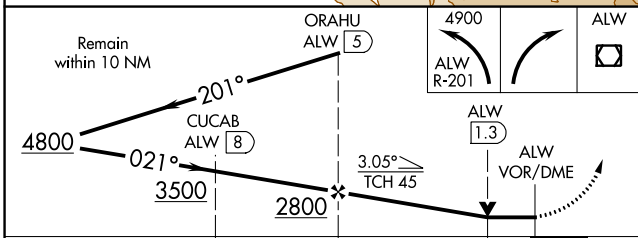
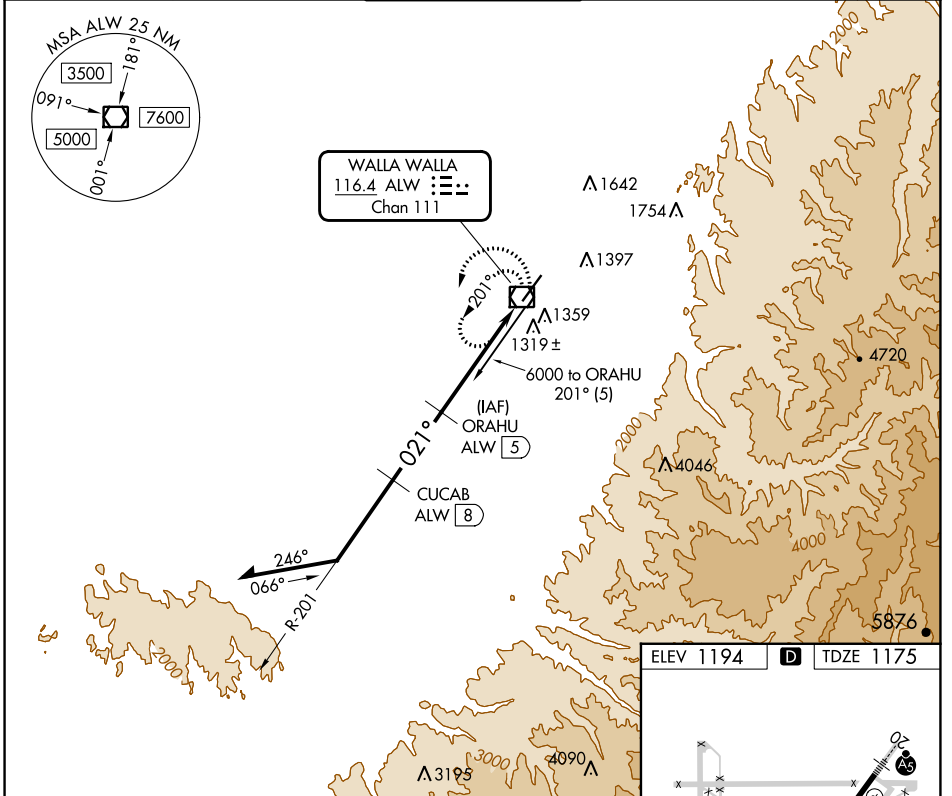
VOR/DME ALW 116.4 Chan 111	APP CRS 021°	Rwy Idg 6527 TDZE 1175 Apt Elev 1194
------------------------------------------------	------------------------	-----------------------------------------------------------------

VOR RWY 2

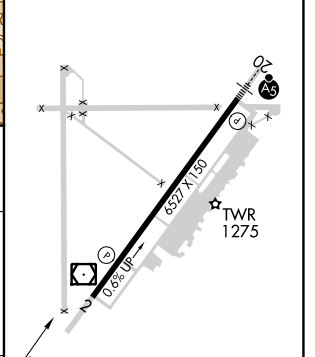
WALLA WALLA RGNL (ALW)

DME required.	MISSED APPROACH: Climbing left turn to 4900 on ALW VOR/DME R-201 within 10 DME then right turn direct ALW VOR/DME and hold, continue climb-in-hold to 4900.
<p>▼</p> <p>▲ Rwy 2 helicopter visibility reduction below 3/4 SM NA.</p>	

ASOS 135.875	SPOKANE APP CON ★ 133.15 379.15	WALLA WALLA TOWER ★ 118.5 (CTAF) 289.4	GND CON 121.6 289.4	UNICOM 122.95
------------------------	-------------------------------------------	--------------------------------------------------	-------------------------------	-------------------------



ELEV 1194	D	TDZE 1175
-----------	----------	-----------



CATEGORY	A	B	C	D
S-2	1580-1	405 (400-1)	1580-1 1/8	405 (400-1 1/8)
C CIRCLING	1760-1 566 (600-1)	1820-1 626 (700-1)	2120-2 3/4 926 (1000-2 3/4)	2300-3 1106 (1200-3)

REL Rwy 2 **1**
HIRL Rwy 2-20 **1**

NW-1, 22 FEB 2024 to 21 MAR 2024

NW-1, 22 FEB 2024 to 21 MAR 2024

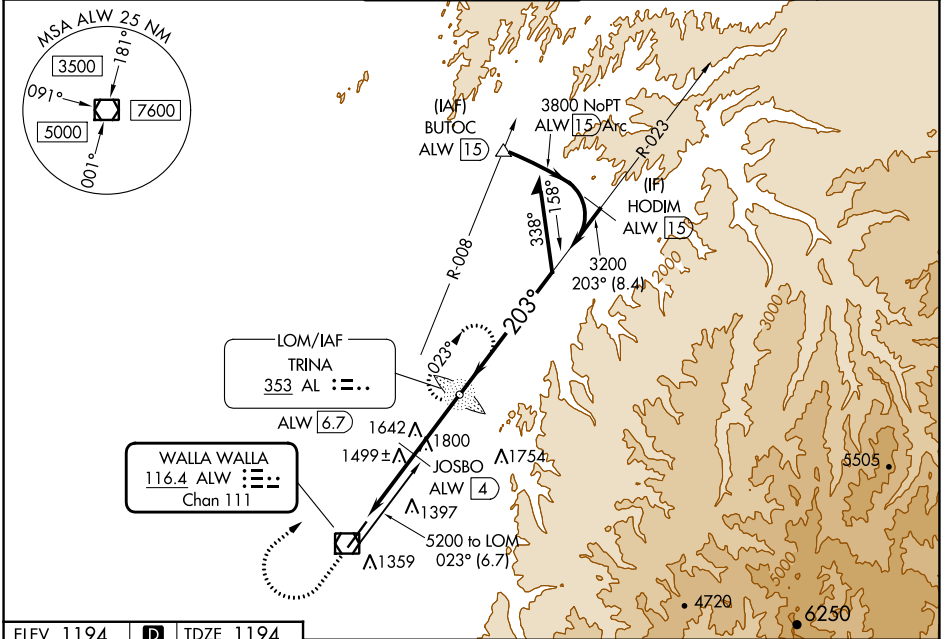
VOR/DME ALW 116.4 Chan 111	APP CRS 203°	Rwy Idg 6527 TDZE 1194 Apt Elev 1194
------------------------------------------------	------------------------	-----------------------------------------------------------------

VOR RWY 20

WALLA WALLA RGNL (ALW)

ADF required.	MALSR	MISSED APPROACH: Climb to 2300 then climbing right turn to 5100 direct TRINA LOM/ALW 6.7 DME and hold, continue climb-in-hold to 5100.
<p>▼</p> <p>▲ NA For inop ALS, increase JOSBO fix minimums S-20 Cats C/D visibility to 1 3/8 SM.</p>		

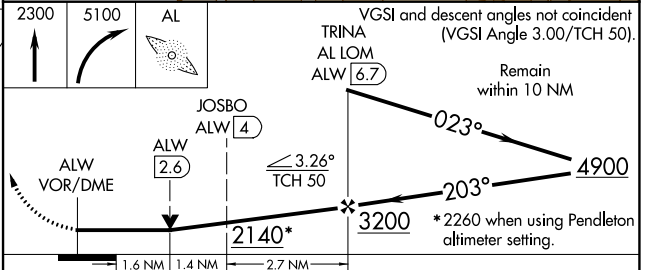
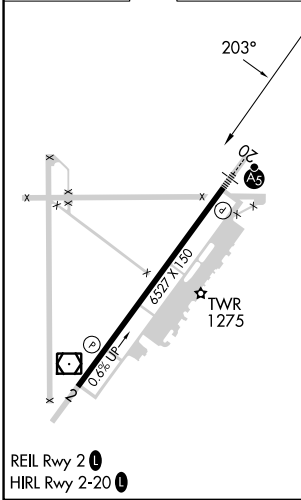
ASOS 135.875	SPOKANE APP CON* 133.15 379.15	WALLA WALLA TOWER* 118.5 (CTAF) 289.4	GND CON 121.6 289.4	UNICOM 122.95
------------------------	------------------------------------------	-------------------------------------------------	-------------------------------	-------------------------



NW-1, 22 FEB 2024 to 21 MAR 2024

NW-1, 22 FEB 2024 to 21 MAR 2024

ELEV 1194	D	TDZE 1194
-----------	----------	-----------



CATEGORY	A	B	C	D
S-20	2140/40	946 (1000-3/4)	2140-2	946 (1000-2)
C CIRCLING	2140-1 1/4	946 (1000-1 1/4)	2140-2 3/4 946 (1000-2 3/4)	2300-3 1106 (1200-3)
JOSBO FIX MINIMUMS (DME REQUIRED)				
S-20	1760/24	566 (600-1/2)	1760-1 1/4	566 (600-1 1/4)
C CIRCLING	1760-1 566 (600-1)	1820-1 626 (700-1)	2120-2 3/4 926 (1000-2 3/4)	2300-3 1106 (1200-3)