

AMARILLO, TEXAS

HI-VOR or TACAN RWY 4

24053

VORTAC PNH 116.6 Chon 113	APCH CRS 037°	Req. Idg TDZE 3607 Appt Elev 3607
--	-------------------------	---

[USAF]

RICK HUSBAND AMARILLO INTL (KAMA)

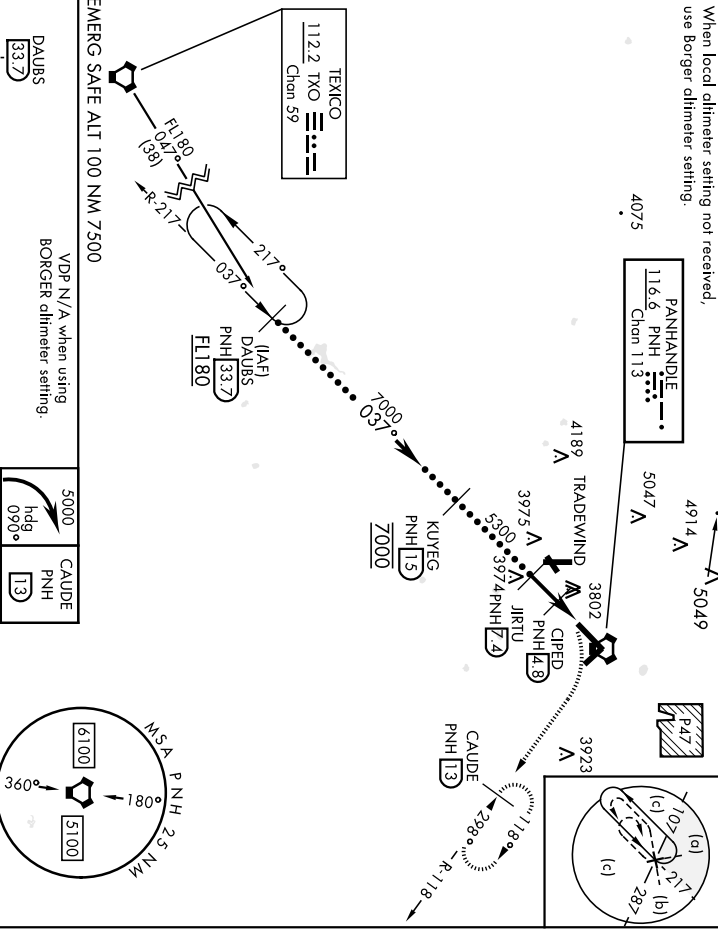
- ▲ * When A15 Inop, increase CAT D vis to 1/2 miles;
- * CAT E vis to 1 1/2 miles;
- ** When A15 Inop, increase CAT CD vis to 1/2 miles;
- CAT E vis to 1 3/4 miles.

MAISR
A5

MISSED APPROACH: Climbing right turn to 5000 on heading 090° and PNH VORTAC R-118 to CAUDE/PNH 1.3 DME and hold.

ATIS 118.85 350.3	AMARILLO APP CON 119.5 307.0	AMARILLO TOWER* 118.3 (CTAF) 257.9	GND CON 121.9 348.6	CINC DEL 121.65 239.275	ASR
-----------------------------	--	--	-------------------------------	-----------------------------------	-----

When local altimeter setting not received, use Baroq altimeter setting.



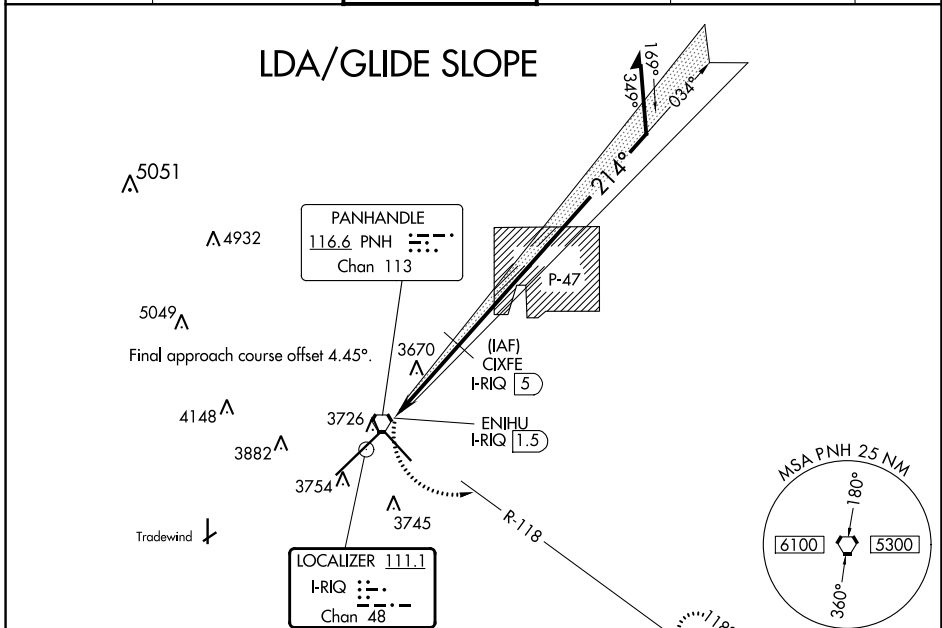
CATEGORY	C	D	E
S-4 *	4040/40 433 (500-4)	4040/50 433 (500-1)	
CIRCLING	4240-1 3/4 633 (700-1 3/4)	4280-2 1/4 673 (700-2 1/4)	4460-3 853 (900-3)
BORGER ALTIMETER SETTING			
S-4 **	4200-1 1/4	593	(600-1 1/4)
CIRCLING	4400-2 1/4 793 (900-2 1/4)	4440-2 3/4 833 (900-2 3/4)	4620-3 1013 (1100-3)

AMARILLO, TEXAS
 Andh 1A 05DECI 9
 35°13'N-101°42'W RICK HUSBAND AMARILLO INTL (KAMA)
 HI-VOR or TACAN RWY 4

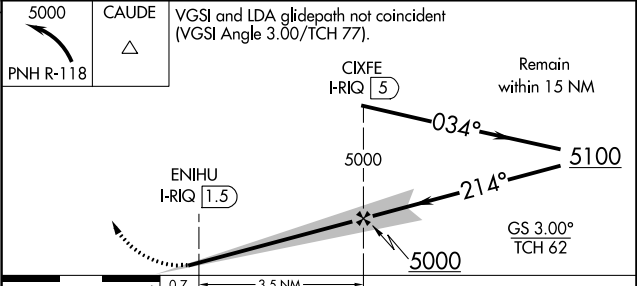
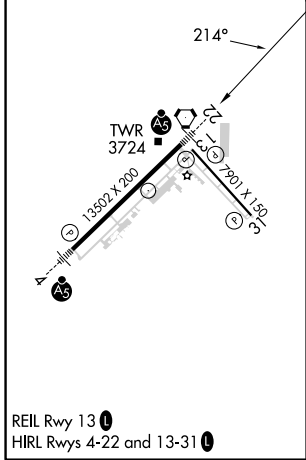
LOC/DME I-RQ 111.1 Chan 48	APP CRS 214°	Rwy Idg 13502 TDZE 3606 Apt Elev 3607
--	------------------------	--

LDA RWY 22
RICK HUSBAND AMARILLO INTL (AMA)

RADAR required for procedure entry.		MALS R-118	MISSED APPROACH: Climbing left turn to 5000 on PNH VORTAC R-118 to CAUDE and hold.				
⚠ For inop ALS, increase LDA/GS-22 all Cats visibility to ¾ SM; increase LDA-22 Cat C/D/E visibility to ⅞ SM. Final approach course offset 4.45 degrees intersects the runway centerline 2509' from Rwy 22 thld. ASR		ATIS 118.85 350.3	AMARILLO APP CON* 119.5 307.0	AMARILLO TOWER* 118.3(CTAF) 257.9	GND CON 121.9 348.6	CLNC DEL 121.65 239.275	UNICOM 122.95



ELEV 3607	D	TDZE 3606
-----------	---	-----------



CATEGORY	A	B	C	D	E
S-LDA/GS 22	3856-½ 250 (300-½)				
S-LDA 22	3920-½	314 (400-½)	3920-¾	314 (400-¾)	
CIRCLING	4080-1	473 (500-1)	4240-1¾ 633 (700-1¾)	4280-2¼ 673 (700-2¼)	4460-3 853 (900-3)

SC-2, 22 FEB 2024 to 21 MAR 2024

SC-2, 22 FEB 2024 to 21 MAR 2024

APP CRS 129°	Rwy Idg 7901
	TDZE 3603
	Apt Elev 3607

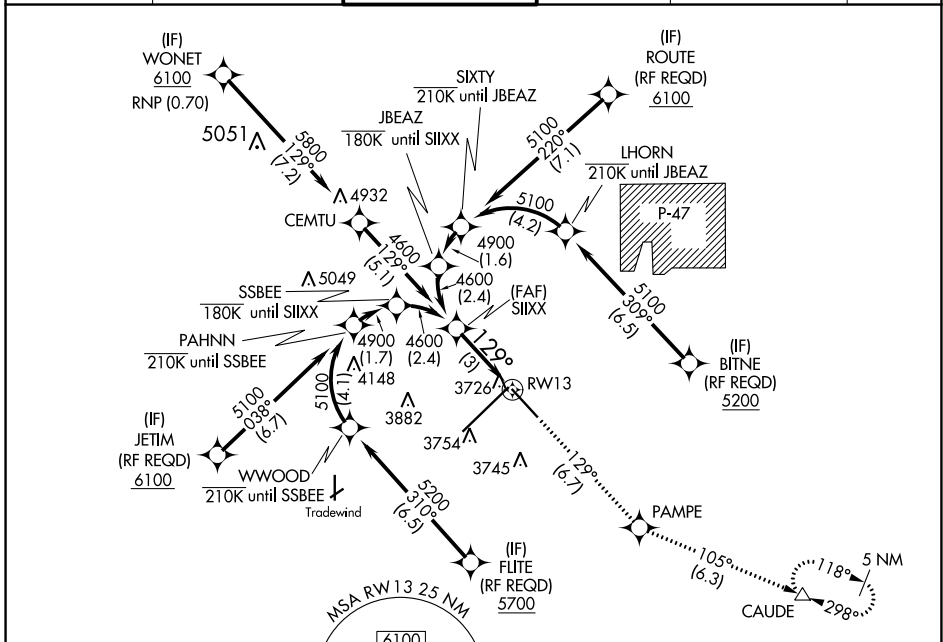
RNAV (RNP) Z RWY 13

RICK HUSBAND AMARILLO INTL (AMA)

ASR For uncompensated Baro-VNAV systems, procedure NA below -14°C (7°F) or above 51°C (124°F). GPS required.

MISSED APPROACH: Climb to 5400 on track 129° to PAMPE and track 105° to CAUDE and hold.

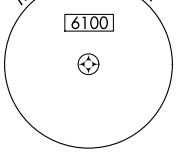
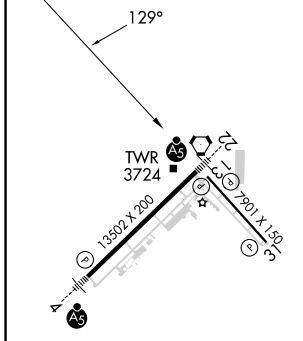
ATIS 118.85 350.3	AMARILLO APP CON* 119.5 307.0	AMARILLO TOWER* 118.3(CTAF) 257.9	GND CON 121.9 348.6	CLNC DEL 121.65 239.275	UNICOM 122.95
-----------------------------	---	---	-------------------------------	-----------------------------------	-------------------------



SC-2, 22 FEB 2024 to 21 MAR 2024

SC-2, 22 FEB 2024 to 21 MAR 2024

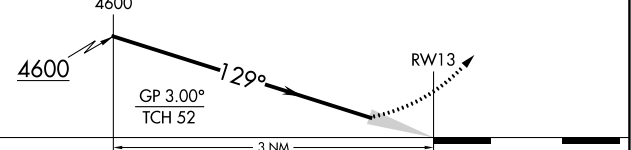
ELEV 3607	D	TDZE 3603
-----------	----------	-----------



RNAV 1 - GPS or RADAR REQUIRED

See planview for multiple IF locations.

5400 ↑ tr 129°	PAMPE ✧	tr 105°	CAUDE △
----------------------	------------	---------	------------



CATEGORY	A	B	C	D
RNP 0.30 DA		3976-1¼	373 (400-1¼)	

AUTHORIZATION REQUIRED

APP CRS	Rwy Idg	13502
218°	TDZE	3606
	Apt Elev	3607

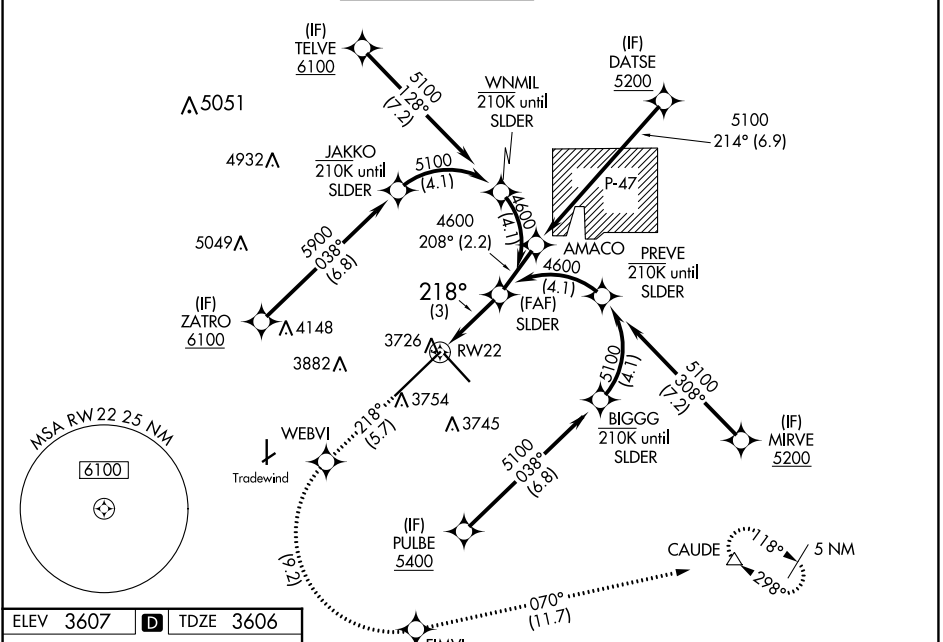
RNAV (RNP) Z RWY 22

RICK HUSBAND AMARILLO INTL (AMA)

ASR For uncompensated Baro-VNAV systems, procedure NA below -14°C (7°F) or above 52°C (125°F). RF required. For inop ALS, increase RNP 0.14 all Cats visibility to 3/8 SM and increase RNP 0.30 all Cats visibility to 1/8 SM.

MALS MISSED APPROACH: (Do not exceed 185 K until FIMVI) Climb to 5400 on track 218° to WEBVI, left turn to FIMVI, then track 070° to CAUDE and hold.

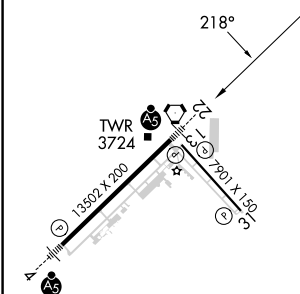
ATIS	AMARILLO APP CON*	AMARILLO TOWER*	GND CON	CLNC DEL	UNICOM
118.85 350.3	119.5 307.0	118.3(CTAF) 257.9	121.9 348.6	121.65 239.275	122.95



SC-2, 22 FEB 2024 to 21 MAR 2024

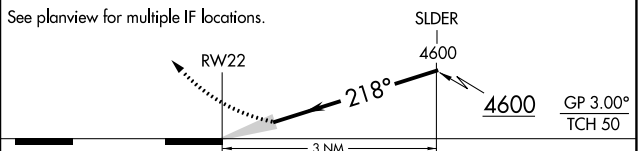
SC-2, 22 FEB 2024 to 21 MAR 2024

ELEV 3607	D	TDZE 3606
-----------	----------	-----------



RNAV 1 - GPS or RADAR REQUIRED

VGSI and RNAV glidepath not coincident (VGSI Angle 3.00/TCH 77).	5400	WEBVI	FIMVI	CAUDE
	tr 218°			tr 070°



CATEGORY	A	B	C	D
RNP 0.14 DA		3884-1/2	278 (300-1/2)	
RNP 0.30 DA		3958-3/4	352 (400-3/4)	

AUTHORIZATION REQUIRED

APP CRS 309°	Rwy Idg TDZE Apt Elev	7901 3601 3607
------------------------	-----------------------------	---

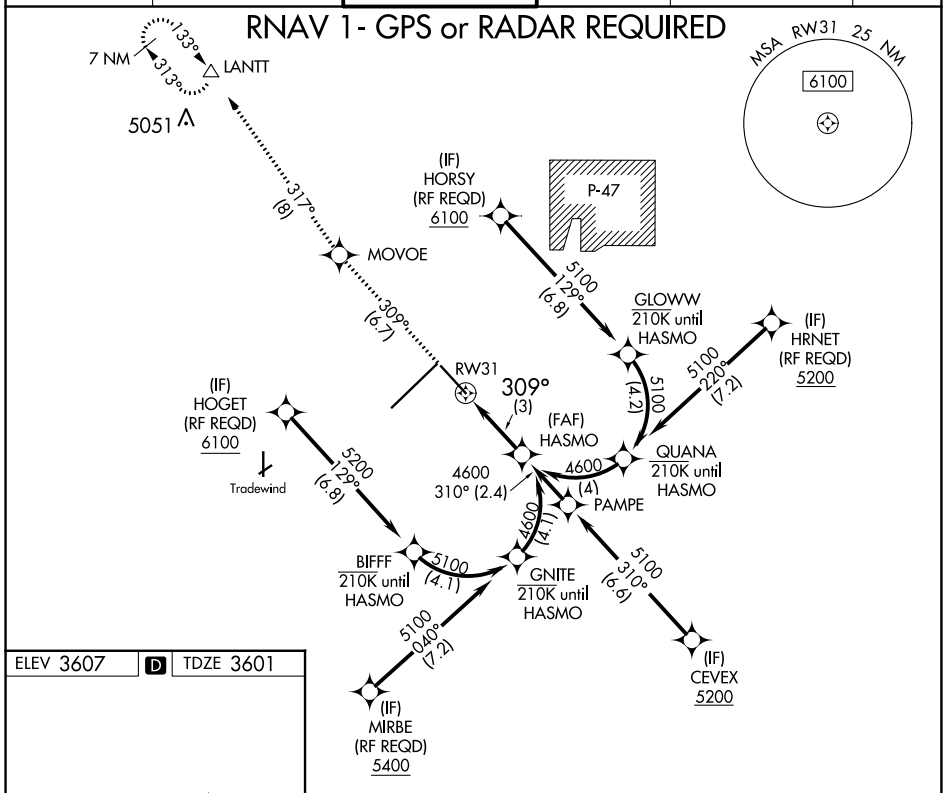
RNAV (RNP) Z RWY 31

RICK HUSBAND AMARILLO INTL (AMA)

ASR For uncompensated Baro-VNAV systems, procedure NA below -14°C (7°F) or above 51°C (124°F). GPS required.

MISSED APPROACH: Climb to 6200 on track 309° to MOVOE and track 317° to LANITT and hold.

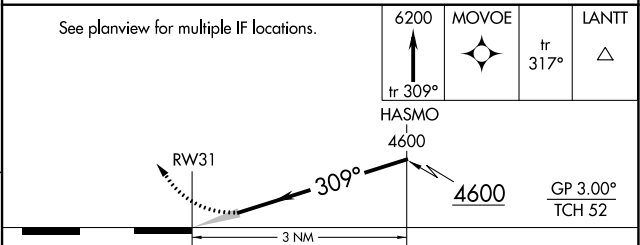
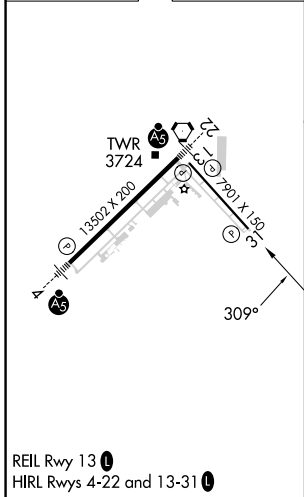
ATIS 118.85 350.3	AMARILLO APP CON* 119.5 307.0	AMARILLO TOWER* 118.3(CTAF) 257.9	GND CON 121.9 348.6	CLNC DEL 121.65 239.275	UNICOM 122.95
-----------------------------	---	---	-------------------------------	-----------------------------------	-------------------------



SC-2, 22 FEB 2024 to 21 MAR 2024

SC-2, 22 FEB 2024 to 21 MAR 2024

ELEV 3607	D	TDZE 3601
-----------	----------	-----------



CATEGORY	A	B	C	D
RNP 0.30 DA		3930-1½	329 (400-1½)	

AUTHORIZATION REQUIRED

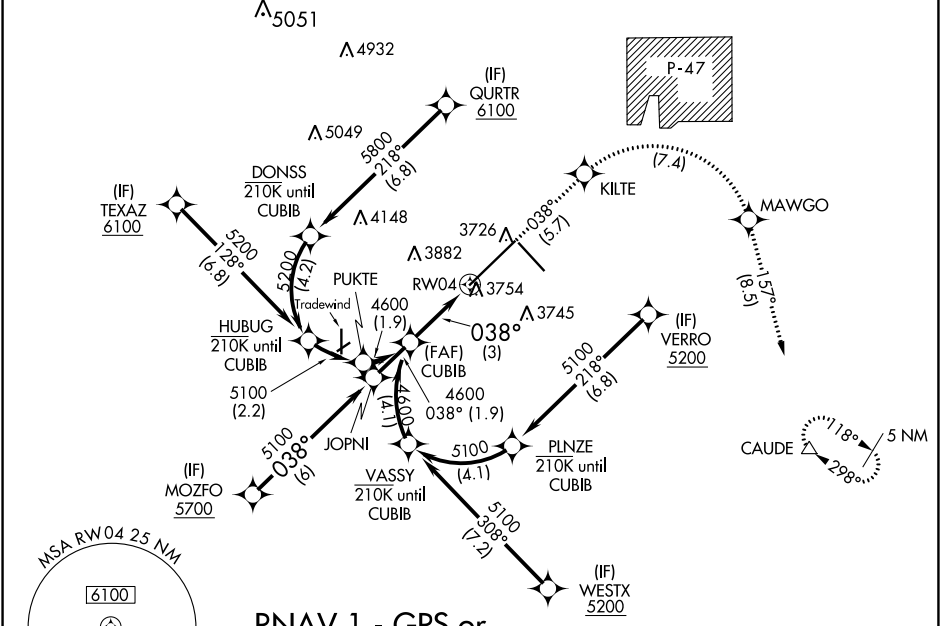
APP CRS	Rwy Idg	13502
038°	TDZE	3607
	Apt Elev	3607

RNAV (RNP) Z RWY 4

RICK HUSBAND AMARILLO INTL (AMA)

ASR	For uncompensated Baro-VNAV systems, procedure NA below -14°C (7°F) or above 53°C (128°F). RF required. GPS required. For inop ALS, increase RNP 0.30 all Cats visibility to 1 1/2 SM.	MALS R	MISSED APPROACH: (Do not exceed 185K until MAWGO) Climb to 5400 on track 038° to KILTE, right turn to MAWGO, then track 157° to CAUDE and hold.

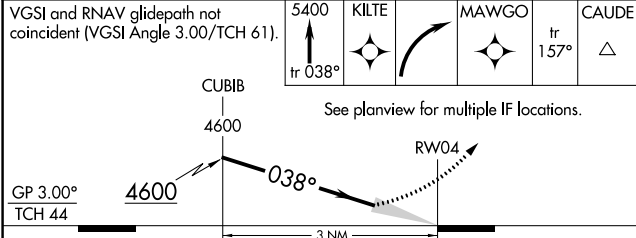
ATIS	AMARILLO APP CON *	AMARILLO TOWER *	GND CON	CLNC DEL	UNICOM
118.85 350.3	119.5 307.0	118.3(CTAF) 0 257.9	121.9 348.6	121.65 239.275	122.95



SC-2, 22 FEB 2024 to 21 MAR 2024

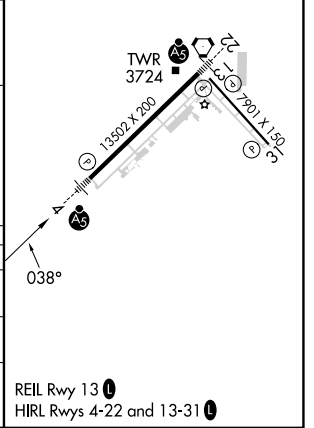
SC-2, 22 FEB 2024 to 21 MAR 2024

ELEV 3607	D TDZE 3607
-----------	--------------------



CATEGORY	A	B	C	D
RNP 0.12 DA		3969/40	362 (400-3/4)	
RNP 0.30 DA		4019/50	412 (500-1)	

AUTHORIZATION REQUIRED

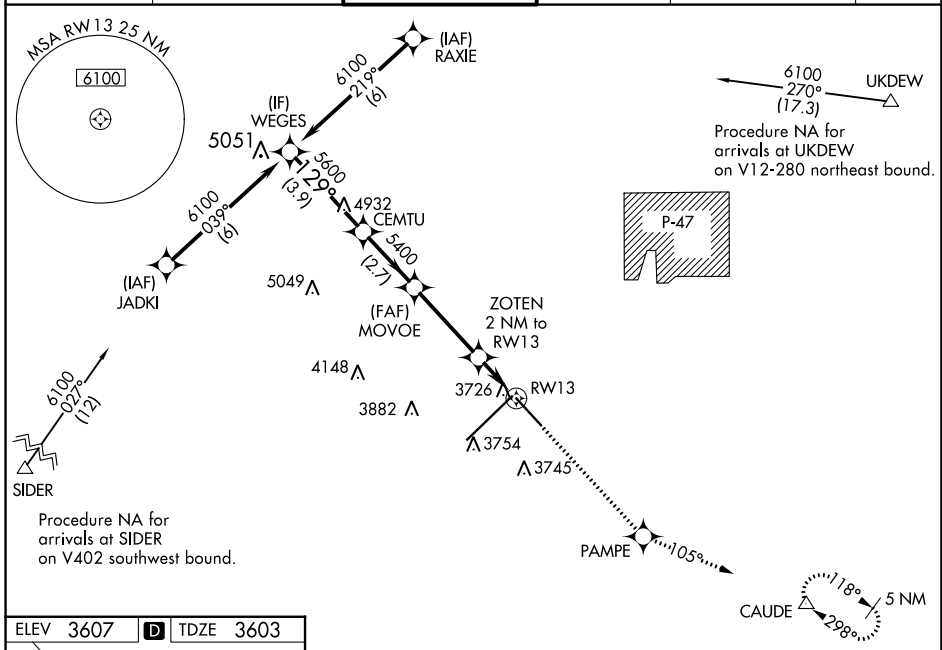


WAAS CH 57919 W13A	APP CRS 129°	Rwy Idg TDZE Apt Elev	7901 3603 3607
--	------------------------	-----------------------------	---

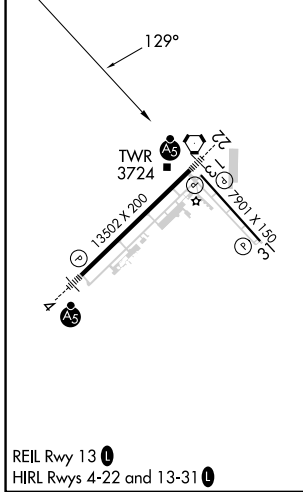
RNAV (GPS) Y RWY 13

RICK HUSBAND AMARILLO INTL (AMA)

RNP APCH.		MISSED APPROACH: Climb to 5400 direct PAMPE and on track 105° to CAUDE and hold.			
<p>⚠ For uncompensated Baro-VNAV systems, LNAV/VNAV NA below -22°C or above 41°C.</p> <p>ASR</p>					
ATIS 118.85 350.3	AMARILLO APP CON* 119.5 307.0	AMARILLO TOWER* 118.3(CTAF) 257.9	GND CON 121.9 348.6	CLNC DEL 121.65 239.275	UNICOM 122.95



ELEV 3607	D	TDZE 3603
-----------	----------	-----------



	WEGES	CEMTU	MOVVOE	ZOTEN 2 NM to RW13	PAMPE	CAUDE
	6100	5600	5400	*4280	5400	tr 105°
	Procedure Turn NA			*1 NM to RW13		
	GP 3.00°					
	TCH 52					
	3.9 NM	2.7 NM	3.4 NM	1 NM	1 NM	
CATEGORY	A	B	C	D		
LPV DA		3803-3/4	200 (200-3/4)			
LNAV/VNAV DA		3976-1 1/4	373 (400-1 1/4)			
LNAV MDA		3980-1	377 (400-1)		3980-1 1/4	377 (400-1 1/4)
C CIRCLING	4080-1	473 (500-1)	4240-1 3/4	633 (700-1 3/4)	4280-2 1/4	673 (700-2 1/4)

SC-2, 22 FEB 2024 to 21 MAR 2024

SC-2, 22 FEB 2024 to 21 MAR 2024

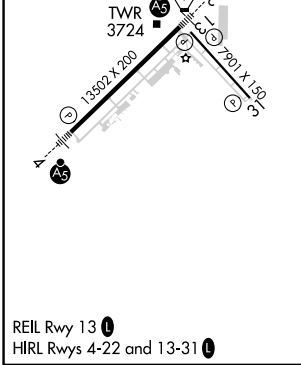
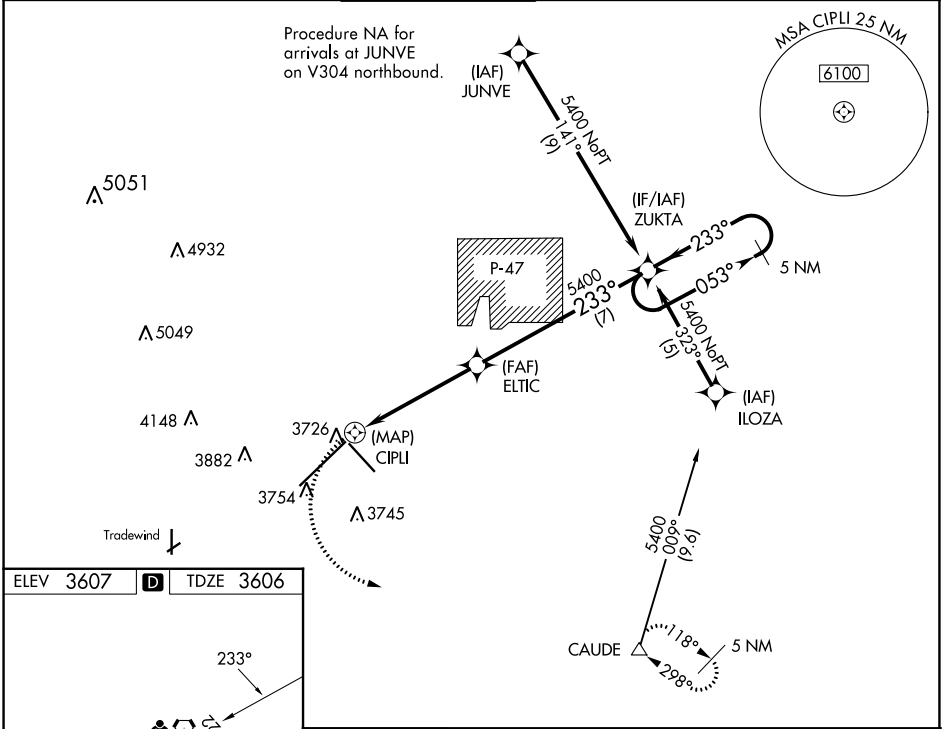
APP CRS	Rwy Idg	13502
233°	TDZE	3606
	Apt Elev	3607

RNAV (GPS) Y RWY 22

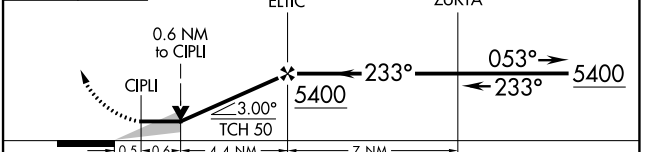
RICK HUSBAND AMARILLO INTL (AMA)

RNP APCH.			MALSR	MISSED APPROACH: Climbing left turn to 5400 direct CAUDE and hold.	
For inop ALS, increase Cat C/D/E visibility to RVR 6000.					

ATIS	AMARILLO APP CON*	AMARILLO TOWER*	GND CON	CLNC DEL	UNICOM
118.85 350.3	119.5 307.0	118.3 (CTAF) 257.9	121.9 348.6	121.65 239.275	122.95



5400	CAUDE	VGSI and descent angles not coincident (VGSI Angle 3.00/TCH 77).	5 NM Holding Pattern
------	-------	--	----------------------



CATEGORY	A	B	C	D	E
LNAV MDA	4020-1/2	414 (500-1/2)	4020-3/4 414 (500-3/4)	4020-1	414 (500-1)
CIRCLING	4080-1	473 (500-1)	4240-1 3/4 633 (700-1 3/4)	4280-2 1/4 673 (700-2 1/4)	4460-3 853 (900-3)

SC-2, 22 FEB 2024 to 21 MAR 2024

SC-2, 22 FEB 2024 to 21 MAR 2024

WAAS CH 82319 W31A	APP CRS 310°	Rwy Idg TDZE Apt Elev	7901 3601 3607
--	------------------------	-----------------------------	---

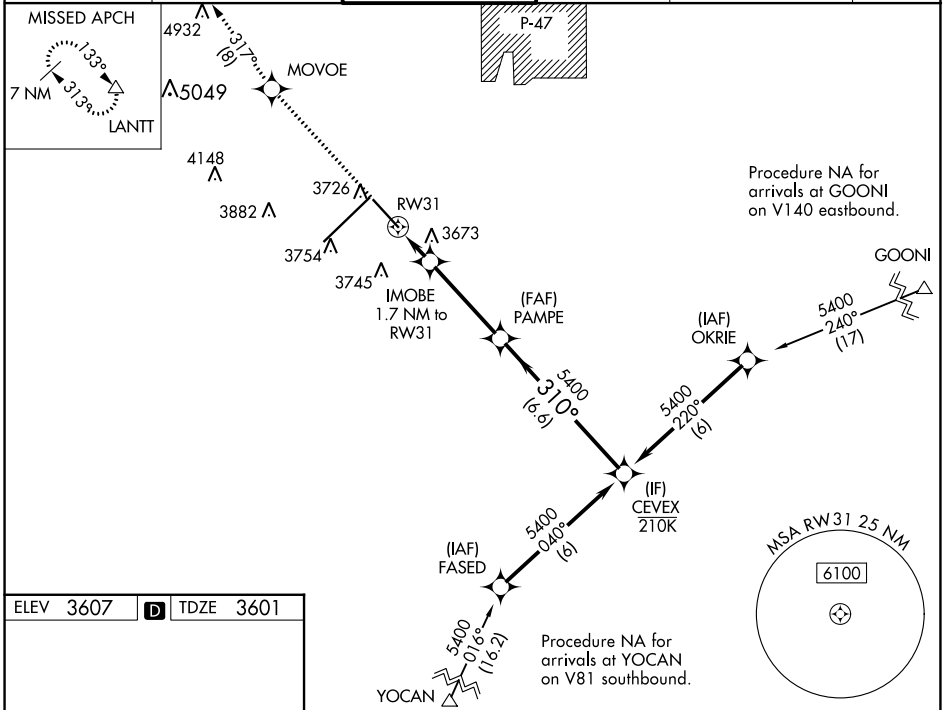
RNAV (GPS) Y RWY 31

RICK HUSBAND AMARILLO INTL (AMA)

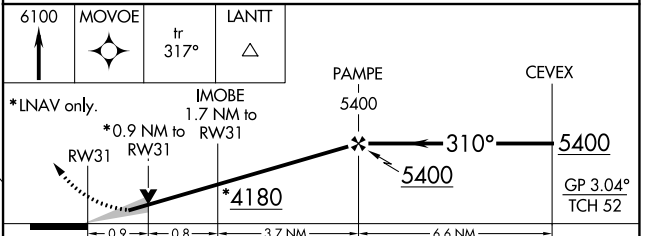
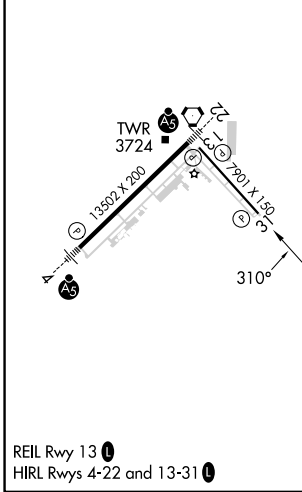
ASR **▼** DME/DME RNP-0.3 NA. For uncompensated Baro-VNAV systems, LNAV/VNAV NA below -14°C (7°F) or above 46°C (116°F). When local altimeter setting not received, use Borger altimeter setting; increase DA to 4004 and all visibilities 5/8 mile; increase all MDA 160 feet and visibility Cat C and D 1/2 mile. Baro-VNAV and VDP NA when using Borger altimeter setting.

MISSED APPROACH: Climb to 6100 direct MOVEO and on track 317° to LANIT and hold.

ATIS 118.85 350.3	AMARILLO APP CON* 119.5 307.0	AMARILLO TOWER* 118.3 (CTAF) 257.9	GND CON 121.9 348.6	CLNC DEL 121.65 239.275	UNICOM 122.95
-----------------------------	---	--	-------------------------------	-----------------------------------	-------------------------



ELEV 3607	D	TDZE 3601
-----------	----------	-----------



CATEGORY	A	B	C	D
LPV DA		3851-3/4	250 (300-3/4)	
LNAV/VNAV DA		3851-3/4	250 (300-3/4)	
LNAV MDA		3940-1	339 (400-1)	
C CIRCLING	4080-1	473 (500-1)	4240-1 3/4 633 (700-1 3/4)	4280-2 1/4 673 (700-2 1/4)

SC-2, 22 FEB 2024 to 21 MAR 2024

SC-2, 22 FEB 2024 to 21 MAR 2024

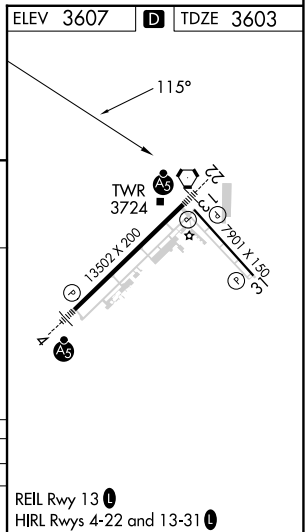
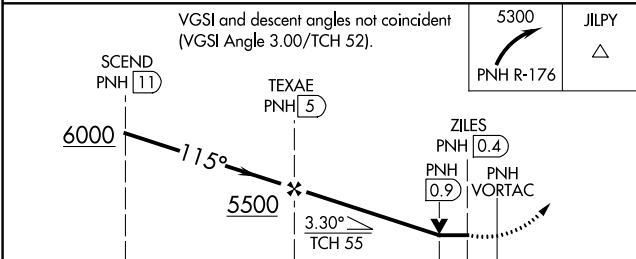
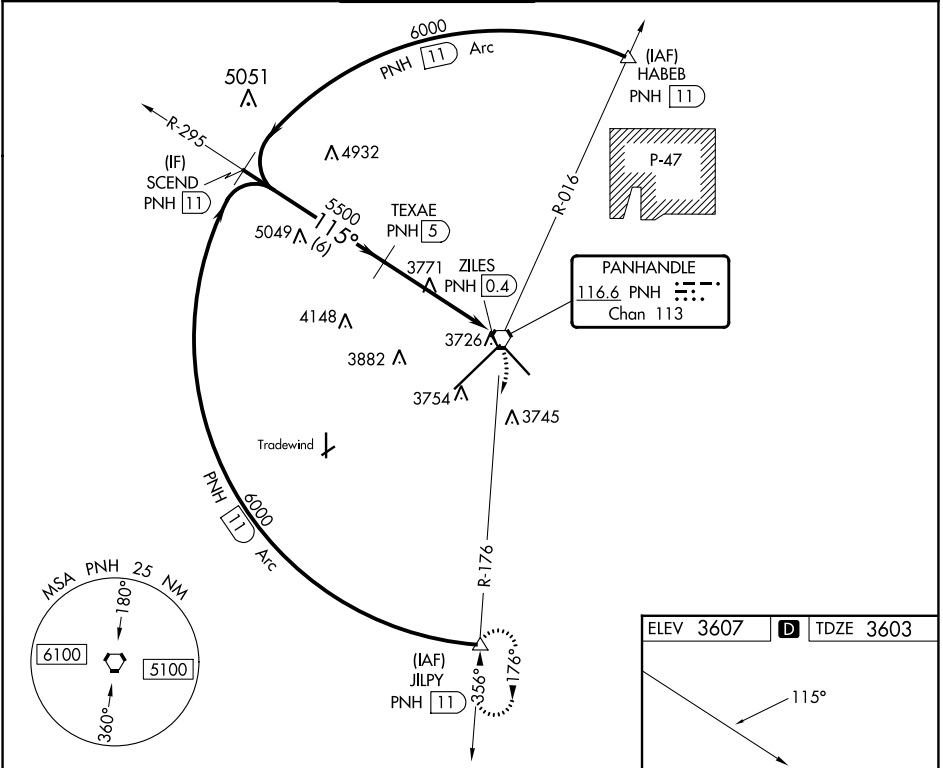
VORTAC PNH 116.6 Chan 113	APP CRS 115°	Rwy Idg 7901 TDZE 3603 Apt Elev 3607
---	------------------------	---

VOR RWY 13

RICK HUSBAND AMARILLO INTL (AMA)

DME required.		MISSED APPROACH: Climbing right turn to 5300 on PNH VORTAC R-176 to JILPY/11 DME and hold.			
ATIS 118.85 350.3	AMARILLO APP CON* 119.5 307.0	AMARILLO TOWER* 118.3 (CTAF) 257.9	GND CON 121.9 348.6	CLNC DEL 121.65 239.275	UNICOM 122.95

ATIS 118.85 350.3	AMARILLO APP CON* 119.5 307.0	AMARILLO TOWER* 118.3 (CTAF) 257.9	GND CON 121.9 348.6	CLNC DEL 121.65 239.275	UNICOM 122.95
-----------------------------	---	--	-------------------------------	-----------------------------------	-------------------------



CATEGORY	A	B	C	D	E
S-13	4040-1	437 (500-1)	4040-1 1/4	437 (500-1 1/4)	
CIRCLING	4080-1	473 (500-1)	4240-1 1/2 633 (700-1 1/2)	4280-2 673 (700-2)	4460-3 853 (900-3)

REIL Rwy 13
HIRL Rwys 4-22 and 13-31

SC-2, 22 FEB 2024 to 21 MAR 2024

SC-2, 22 FEB 2024 to 21 MAR 2024

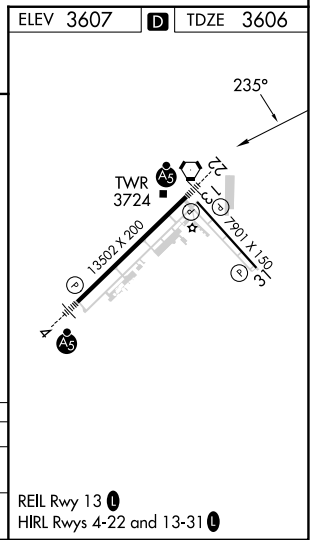
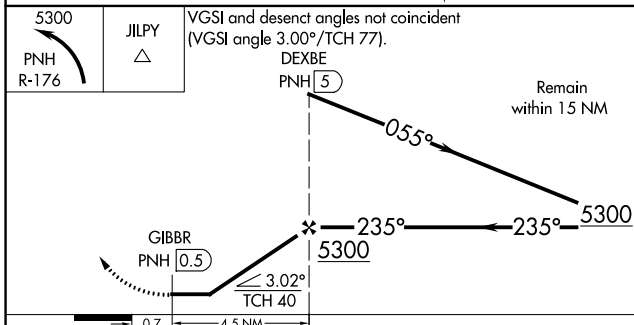
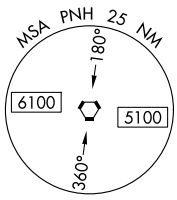
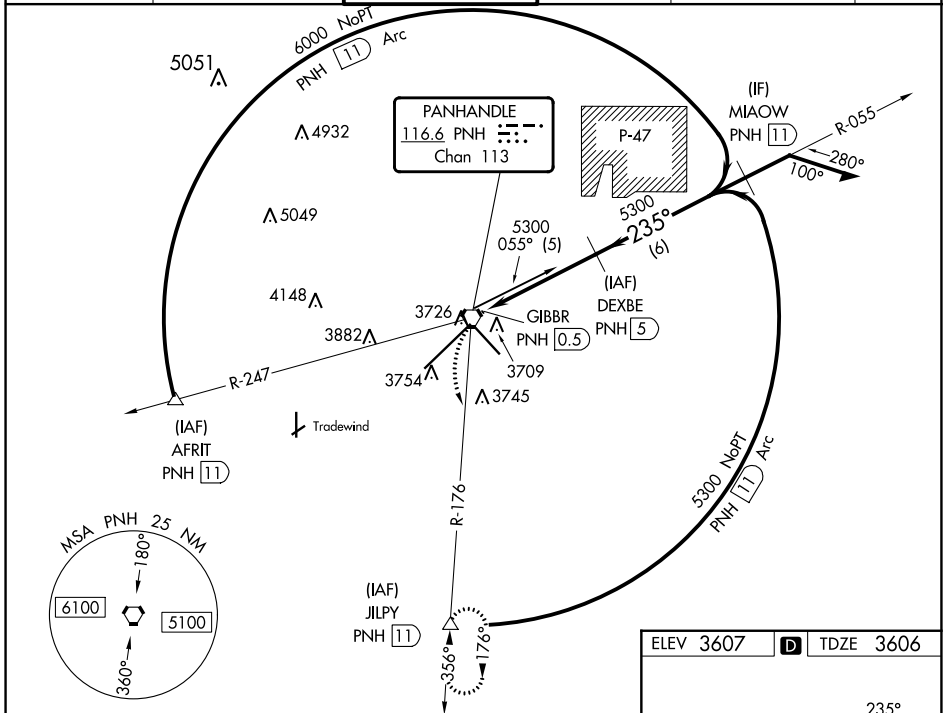
VORTAC PNH 116.6 Chan 113	APP CRS 235°	Rwy Idg 13502 TDZE 3606 Apt Elev 3607
---	------------------------	--

VOR RWY 22

RICK HUSBAND AMARILLO INTL (AMA)

DME required. For inop ALS, increase Cat C visibility to 1 SM.		MALSR	MISSED APPROACH: Climbing left turn to 5300 on PNH R-176 to JILPY/11 DME and hold.		
---	--	-------	--	--	--

ATIS 118.85 350.3	AMARILLO APP CON* 119.5 307.0	AMARILLO TOWER* 118.3 (CTAF) 257.9	GND CON 121.9 348.6	CLNC DEL 121.65 239.275	UNICOM 122.95
-----------------------------	---	--	-------------------------------	-----------------------------------	-------------------------



CATEGORY	A	B	C	D	E
S-22	3960-1/2 354 (400-1/2)	3960-3/4 354 (400-3/4)	3960-1 354 (400-1)	3960-1 354 (400-1)	3960-1 354 (400-1)
C CIRCLING	4080-1 473 (500-1)	4240-1 3/4 633 (700-1 3/4)	4280-2 1/4 673 (700-2 1/4)	4460-3 853 (900-3)	4460-3 853 (900-3)

REIL Rwy 13
HIRL Rws 4-22 and 13-31

SC-2, 22 FEB 2024 to 21 MAR 2024

SC-2, 22 FEB 2024 to 21 MAR 2024

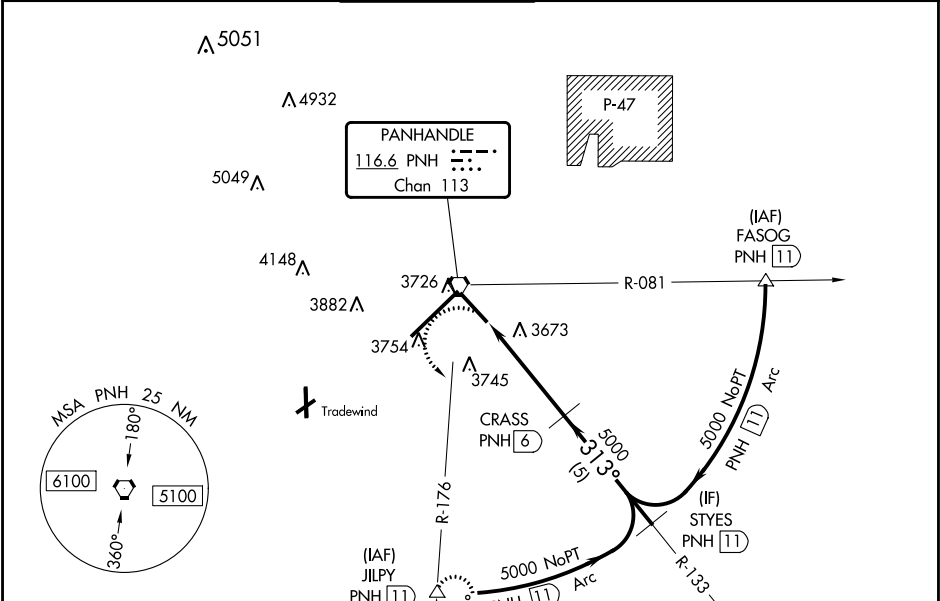
VORTAC PNH 116.6 Chan 113	APP CRS 313°	Rwy Idg TDZE Apt Elev	7901 3601 3607
---	------------------------	-----------------------------	---

VOR RWY 31

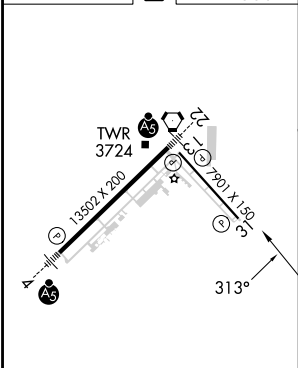
RICK HUSBAND AMARILLO INTL (AMA)

DME required.		MISSED APPROACH: Climbing left turn to 5300 on PNH VORTAC R-176 to JILPY/11 DME and hold.			
ATIS 118.85 350.3	AMARILLO APP CON* 119.5 307.0	AMARILLO TOWER* 118.3(CTAF) 257.9	GND CON 121.9 348.6	CLNC DEL 121.65 239.275	UNICOM 122.95

ATIS 118.85 350.3	AMARILLO APP CON* 119.5 307.0	AMARILLO TOWER* 118.3(CTAF) 257.9	GND CON 121.9 348.6	CLNC DEL 121.65 239.275	UNICOM 122.95
-----------------------------	---	---	-------------------------------	-----------------------------------	-------------------------



ELEV 3607	D	TDZE 3601
------------------	----------	------------------



REIL Rwy 13	HIRL Rwys 4-22 and 13-31	FAF to MAP 4.4 NM			
Knots	60	90	120	150	180
Min:Sec	4:24	2:56	2:12	1:46	1:28

5300 PNH R-176	JILPY △	VGSI and descent angles not coincident (VGSI Angle 3.00°/TCH 52).	CRASS PNH 6	STYES PNH 11	
PNH 1.6	PNH 2.6	5000	5000	5000	
1 NM	3.4 NM	5 NM			
CATEGORY	A	B	C	D	E
S-31	3960-1	359 (400-1)	3960-1¼	359 (400-1¼)	
CIRCLING	4080-1	473 (500-1)	4240-1¾ 633 (700-1¾)	4280-2¼ 673 (700-2¼)	4460-3 853 (900-3)

SC-2, 22 FEB 2024 to 21 MAR 2024

SC-2, 22 FEB 2024 to 21 MAR 2024