

ASPEN SEVEN DEPARTURE

AL-5889 (FAA)

ASPEN-PITKIN COUNTY/SARDY FLD (A5E)
ASPEN, COLORADO

ATIS
120.4
CLNC DEL
123.75
GND CON
121.9
ASPEN TOWER*
118.85 (CTAF) 288.3
ASPEN DEP CON*
123.8 288.3
DENVER CENTER
119.85 363.15
UNICOM
122.95

**TOP ALTITUDE:
16000**

MEEKER
115.2 EKR
Chan 99
N40°04.05' - W107°55.50'
L-9-11, H-3

MILE HIGH
114.7 DVV
Chan 94
N39°53.68' - W104°37.46'
L-10, H-3-5

SNOW
109.2 SXW
Chan 29
N39°37.77'
W106°59.47'
L-9

KREMMLING
113.8 RLG
Chan 85
N40°00.16' - W106°26.55'
L-9-11, H-3-5

RIFLE
113.35 RIL
Chan 80(Y)
N39°31.70'
W107°43.18'
L-9

LINDZ
N39°23.33'
W107°09.48'
L-9

RED TABLE
113.0 DBL
Chan 77
N39°26.36'
W106°53.68'
L-9, H-3

FALCON
116.3 FQF
Chan 110
N39°41.41'
W104°37.26'
L-10, H-3-5

GRAND JUNCTION
112.4 JNC
Chan 71
N39°03.57' - W108°47.55'
L-9, H-3

LOCALIZER 108.5
I-PKN

BLACK FOREST
112.5 BRK
Chan 72
N38°56.67'
W104°38.01'
L-10, H-3-5

MONTRORSE
117.1 MTJ
Chan 118
N38°30.39' - W107°53.96'
L-9, H-3

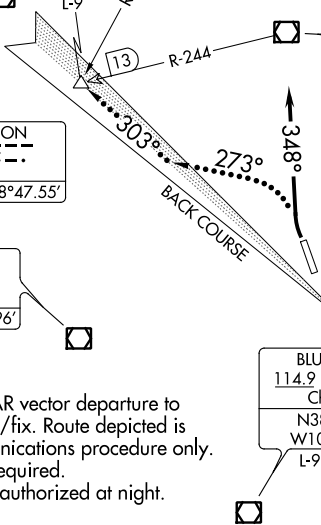
BLUE MESA
114.9 HBU
Chan 96
N38°27.13'
W107°02.38'
L-9, H-3

PUEBLO
116.7 PUB
Chan 114
N38°17.66'
W104°25.77'
L-10, H-5

NOTE: This is a RADAR vector departure to assigned route/fix. Route depicted is for lost communications procedure only.
NOTE: Transponder required.
NOTE: Procedure not authorized at night.

TAKEOFF MINIMUMS
Rwy 15: NA - Terrain.
Rwy 33: 400-1 with minimum obstacle climb of 650' per NM to 13000, ATC climb of 840' per NM to 16000.

NOTE: Chart not to scale.



SW-1, 22 FEB 2024 to 21 MAR 2024

SW-1, 22 FEB 2024 to 21 MAR 2024

DEPARTURE ROUTE DESCRIPTION

TAKEOFF RUNWAY 33: Climbing right turn heading 348°, maintain 16000 or assigned altitude for RADAR vectors to assigned route/fix. Expect clearance to filed altitude 10 minutes after departure.

LOST COMMUNICATIONS: If no transmissions are received for one minute after departure, turn left heading 273° to intercept and proceed via the I-PKN NW course (outbound) to LINDZ INT/DBL R-244/13 DME, thence via assigned fix/route.

NOTE: I-PKN back course outbound is normal sensing.

ASPEN SEVEN DEPARTURE

**TOP ALTITUDE:
16000**

KREMLING
113.8 RLG
Chan 85
N40°00.16' - W106°26.55'
L-9-11, H-3-5

JESIE
N40°01.41'
W106°52.53'

SNOW
109.2 SXW
Chan 29
N39°37.77'
W106°59.47'

RED TABLE
113.0 DBL
Chan 77
N39°26.36'
W106°53.68'

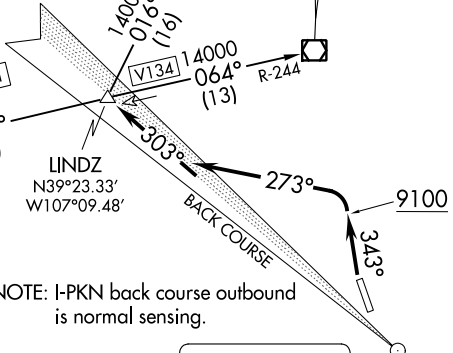
MEEKER
115.2 EKR
Chan 99
N40°04.05' - W107°55.50'
L-9-11, H-3

RIFLE
113.35 RIL
Chan 80(Y)
N39°31.70'
W107°43.18'

GRAND JUNCTION
112.4 JNC
Chan 71
N39°03.57' - W108°47.55'
L-9, H-3

PACES
N39°09.95'
W108°16.73'

SLOUM
N39°17.81'
W107°37.67'



LOCALIZER 108.5
I-PKN

TAKEOFF MINIMUMS
Rwy 15: NA - Terrain.
Rwy 33: 400-1 with minimum climb of 465' per NM to 10000.

ATIS
120.4
CLINC DEL
123.75
GND CON
121.9
ASPEN TOWER*
118.85 (CTAF) 288.3
ASPEN DEP CON*
123.8 288.3
DENVER CENTER
119.85 363.15
UNICOM
122.95



NOTE: Chart not to scale.

LINDZ NINE DEPARTURE
(LINDZ9.LINDZ) 19JUL18

ASPEN, COLORADO
ASPEN-PITKIN COUNTY/SARDY FLD (ASE)

(LINDZ9.LINDZ) 22363
LINDZ NINE DEPARTURE

AL-5889 (FAA)

ASPEN-PITKIN COUNTY/SARDY FLD (ASE)
ASPEN, COLORADO

(NARRATIVE ON FOLLOWING PAGE)



DEPARTURE ROUTE DESCRIPTION

TAKEOFF RUNWAY 33: Climb heading 343° to 9100, then climbing left turn to 16000 on heading 273° to intercept I-PKN NW course outbound to LINDZ INT/DBL 13 DME. Then via assigned transition, maintain 16000, expect clearance to filed altitude 10 minutes after departure.

LOST COMMUNICATIONS: If no transmissions are received for one minute after departure, or by DBL VOR/DME 9 DME, turn left on heading 273° to intercept and proceed via the I-PKN NW course (outbound) to LINDZ INT/DBL VOR/DME 13 DME, then via assigned route/transition.

GRAND JUNCTION TRANSITION (LINDZ9.JNC): From over LINDZ on DBL R-244 to SLOLM, then on JNC R-060 to JNC VOR/DME.

KREMMLING TRANSITION (LINDZ9.RLG): From over LINDZ on SXW R-196 to SXW VOR/DME, then on SXW R-001 to JESIE, then on RLG R-260 to RLG VOR/DME.

MEEKER TRANSITION (LINDZ9.EKR): From over LINDZ on DBL R-244 to SLOLM, then on RIL R-153 to RIL VOR/DME, then on RIL R-334 and EKR R-149 to EKR VOR/DME.

RED TABLE TRANSITION (LINDZ9.DBL): From over LINDZ on DBL R-244 to DBL VOR/DME.

RIFLE TRANSITION (LINDZ9.RIL): From over LINDZ on DBL R-244 to SLOLM, then on RIL R-153 to RIL VOR/DME.

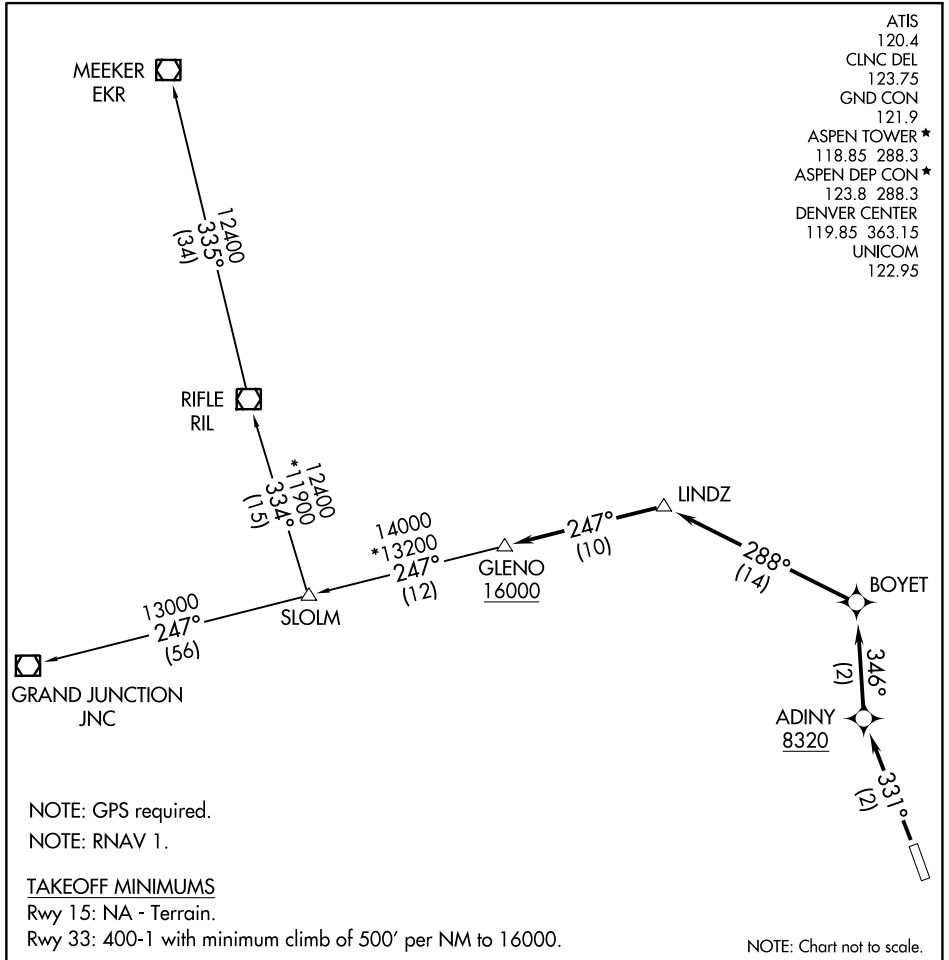
SW-1, 22 FEB 2024 to 21 MAR 2024

SW-1, 22 FEB 2024 to 21 MAR 2024

(PITKN4.GLENO) 21168

PITKN FOUR DEPARTURE (RNAV)

ASPEN-PITKIN COUNTY/SARDY FLD (A5E)
AL-5889 (FAA) ASPEN, COLORADO



SW-1, 22 FEB 2024 to 21 MAR 2024

SW-1, 22 FEB 2024 to 21 MAR 2024

DEPARTURE ROUTE DESCRIPTION

TAKEOFF RUNWAY 33: Climb heading 331° to at or above 8320 direct ADINY, and climbing right turn to 16000 on track 346° to BOYET, and on track 288° to LINDZ, and on track 247° to GLENO, thence. . . .

. . . .via transition or assigned route, expect clearance to filed altitude 10 minutes after departure.

GRAND JUNCTION TRANSITION (PITKN4.JNC)

MEEKER TRANSITION (PITKN4.EKR)

RIFLE TRANSITION (PITKN4.RIL)

PITKN FOUR DEPARTURE (RNAV)
(PITKN4.GLENO) 15NOV12

ASPEN, COLORADO
ASPEN-PITKIN COUNTY/SARDY FLD (A5E)