

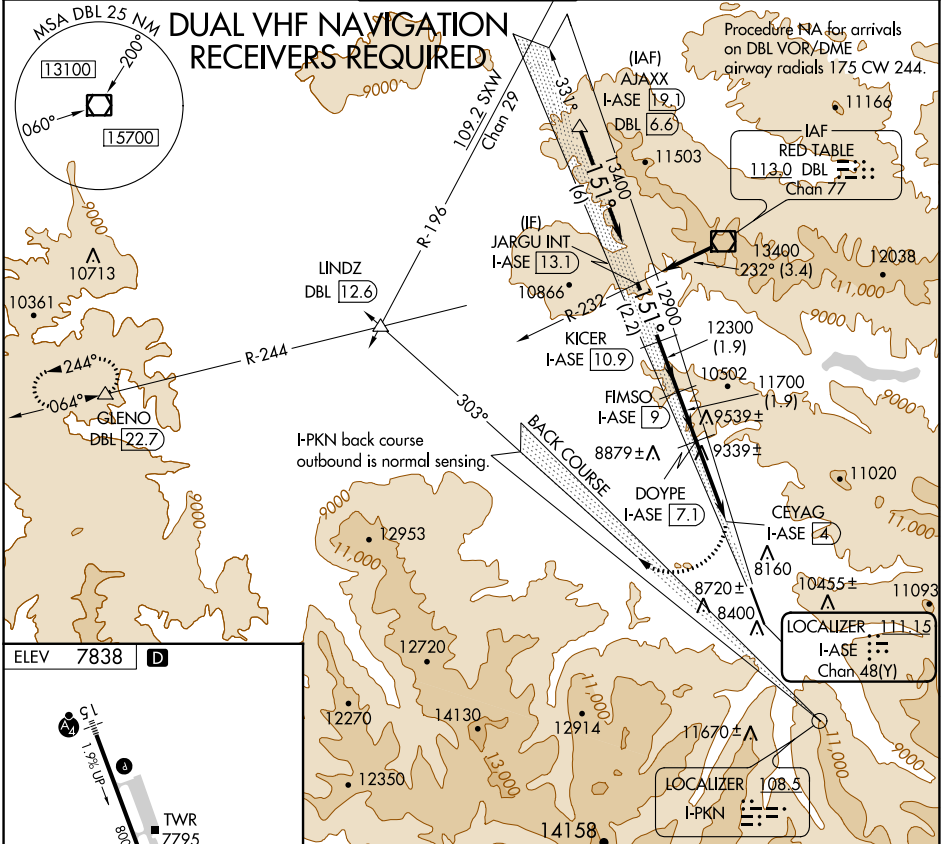
LOC/DME I-ASE 111.15 Chan 48(Y)	APP CRS 151°	Rwy Idg TDZE Apt Elev 7838	N/A N/A N/A
---	------------------------	---	-------------------

LOC/DME-E

ASPEN-PITKIN COUNTY/SARDY FLD (ASE)

Procedure NA at night.
NA Circling NA for Cat C southwest of Rwy 15-33.
MISSED APPROACH: Climbing right turn to 14000 on heading 300° and on I-PKN localizer NW course (303°) to LINDZ INT/DBL 12.6 DME and on DBL VOR/DME R-244 to GLENO INT/DBL 22.7 DME and hold.

ATIS 120.4	ASPEN APP CON * 123.8 288.3	ASPEN TOWER * 118.85 (CTAF) 0 288.3	GND CON 121.9	CLNC DEL 123.75	UNICOM 122.95
----------------------	---------------------------------------	---	-------------------------	---------------------------	-------------------------

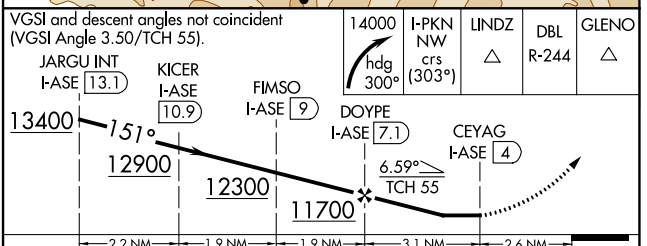


SW-1, 22 FEB 2024 to 21 MAR 2024

SW-1, 22 FEB 2024 to 21 MAR 2024

ELEV **7838** **D**

REIL Rwy 15
 REIL Rwy 33
 MIRL Rwy 15-33



CATEGORY	A	B	C	D
CIRCLING	9840-3 2002 (2100-3)	10220-3 2382 (2400-3)	10960-3 3122 (3200-3)	NA

APP CRS	Rwy ldg TDZE	N/A
166°	Apt Elev	7838

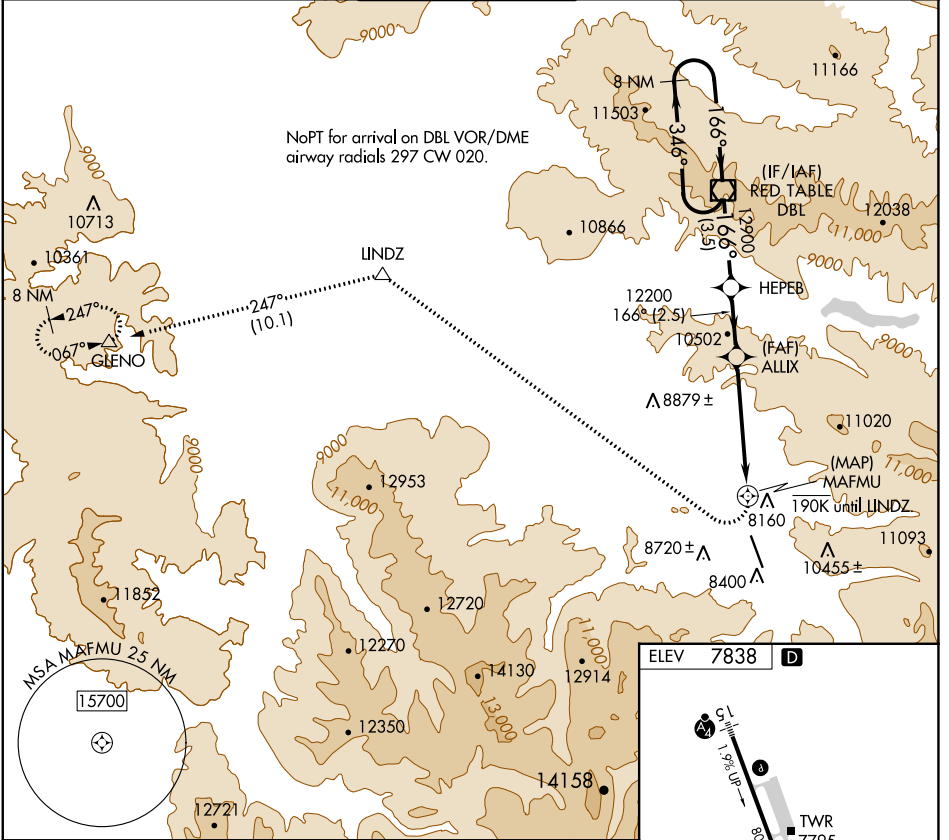
RNAV (GPS)-F

ASPEN-PITKIN COUNTY/SARDY FLD (A5E)

When local altimeter setting not received, procedure NA.
 DME/DME RNP-0.3 NA. Visibility reduction by helicopters NA.
 Procedure NA at night. Circling NA for Cat C southwest of Rwy 15-33.

MISSED APPROACH: Climbing right turn to 14000 direct LINDZ and on track 247° to GLENO and hold.

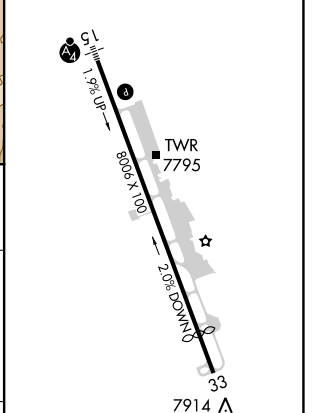
ATIS	ASPEN APP CON *	ASPEN TOWER *	GND CON	CLNC DEL	UNICOM
120.4	123.8 288.3	118.85 (CTAF) 288.3	121.9	123.75	122.95



SW-1, 22 FEB 2024 to 21 MAR 2024

SW-1, 22 FEB 2024 to 21 MAR 2024

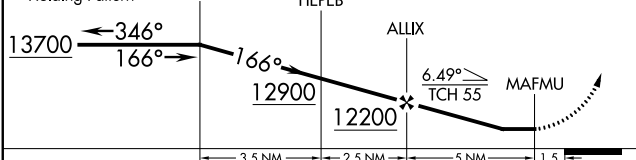
ELEV	7838	D
------	------	---



VGSI and descent angles not coincident (VGSI Angle 3.50/TCH 55).

14000	LINDZ	tr 247°	GLENO
	△		△

8 NM Holding Pattern DBL VOR/DME HEPEB



CATEGORY	A	B	C	D
CIRCLING	10200-1¾ 2362 (2400-1¾)	10220-1¾ 2382 (2400-1¾)	10960-3 3122 (3200-3)	NA

REIL Rwy 15

REIL Rwy 33

MIRL Rwy 15-33

RNAV (GPS)-F

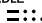
Orig 21168

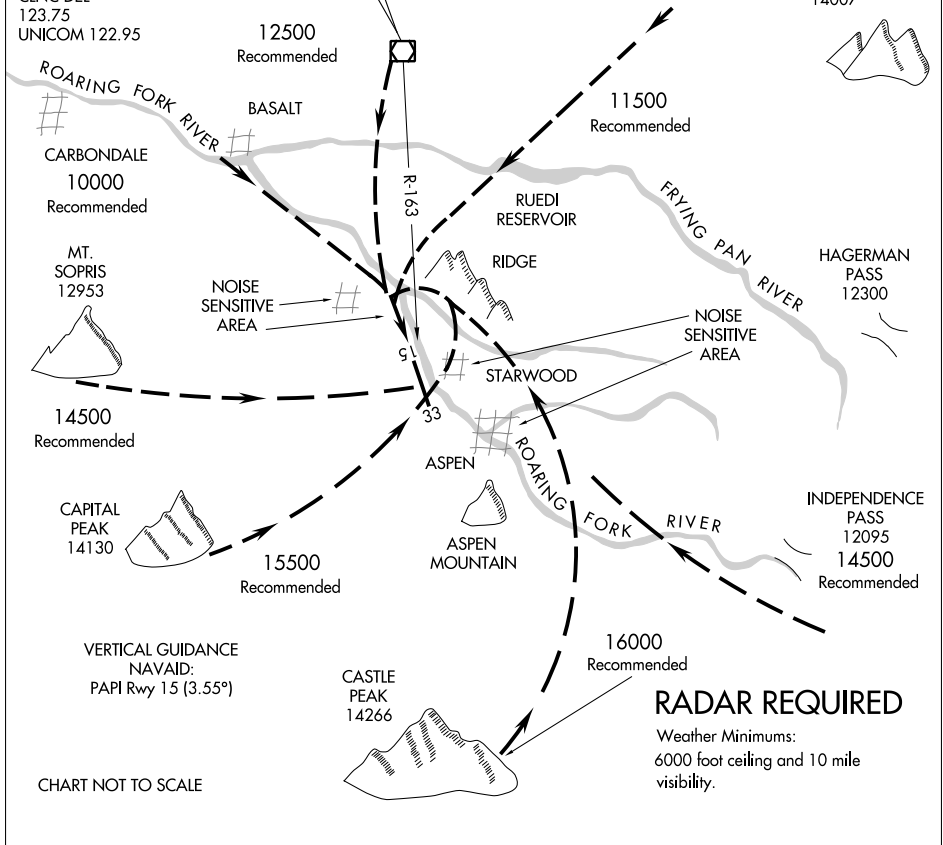
AL-5889 (FAA)

ROARING FORK VISUAL RWY 15

ASPEN-PITKIN COUNTY/SARDY FLD (A5E)
ASPEN, COLORADO

ATIS 120.4
 ASPEN APP CON *
 123.8 288.3
 ASPEN TOWER *
 118.85 (CTAF) 288.3
 GND CON
 121.9
 CLNC DEL
 123.75
 UNICOM 122.95

RED TABLE
 113.0 DBL 
 Chan 77



SW-1, 22 FEB 2024 to 21 MAR 2024

SW-1, 22 FEB 2024 to 21 MAR 2024

ROARING FORK VISUAL RWY 15

Procedure not authorized at night.
 When visual approaches to Runway 15 are in progress, clearances will be given utilizing in part the following phraseology:
 "(IDENT) cleared for a ROARING FORK VISUAL Approach to Runway 15."

ROARING FORK VISUAL RWY 15

Orig 16NOV89

39°13'N-106°52'W

ASPEN, COLORADO
ASPEN-PITKIN COUNTY/SARDY FLD (A5E)