

WAAS CH <b>86535</b> <b>W13A</b>	APP CRS <b>126°</b>	Rwy Idg TDZE Apt Elev	<b>6132</b> <b>3534</b> <b>3545</b>
--	------------------------	-----------------------------	---

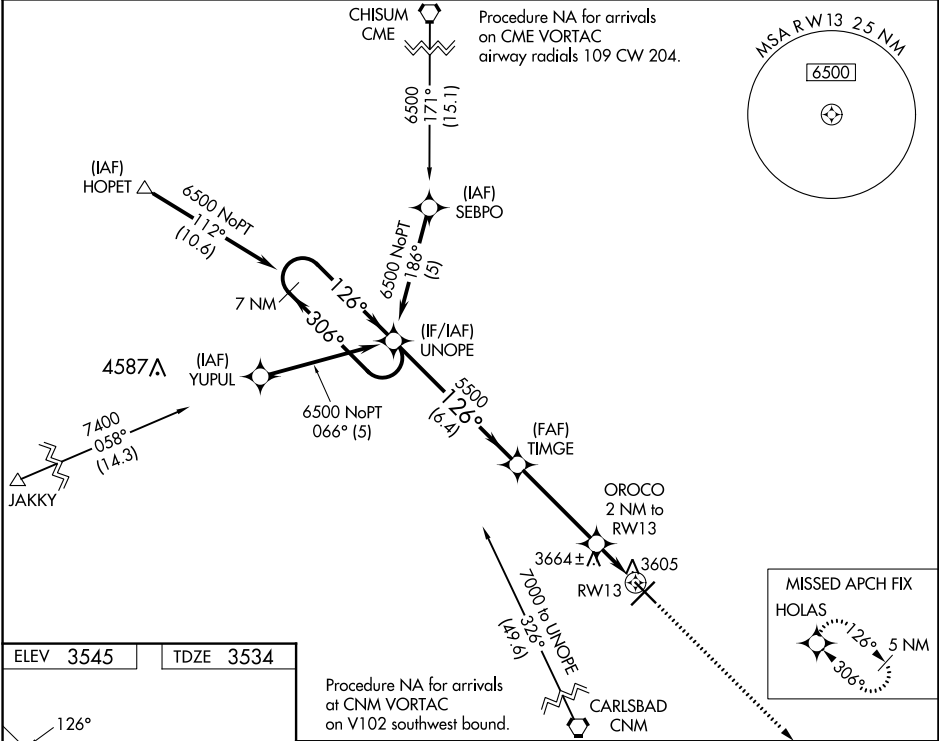
# RNAV (GPS) RWY 13

ARTESIA MUNI (ATS)

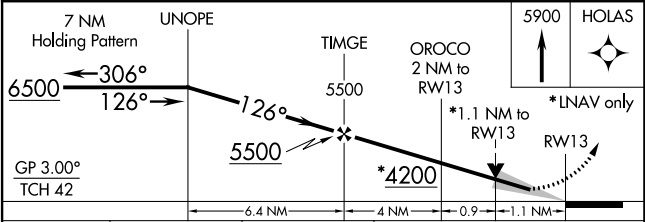
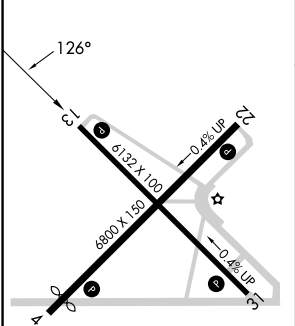
**⚠** For uncompensated Baro-VNAV systems, LNAV-VNAV NA below -22°C (-7°F) or above 54°C (130°F). DME/DME RNP-0.3 NA.

MISSED APPROACH: Climb to 5900 direct HOLAS and hold.

AWOS-3 <b>126.725</b>	ROSWELL APP CON * <b>119.6 239.0</b>	UNICOM <b>123.075 (CTAF) 0</b>
--------------------------	---	-----------------------------------



ELEV 3545	TDZE 3534
-----------	-----------



CATEGORY	A	B	C	D
LPV DA		3734-3/4	200 (200-3/4)	
LNAV/VNAV DA		3784-7/8	250 (300-7/8)	
LNAV MDA	3920-1	386 (400-1)	3920-1 1/8	386 (400-1 1/8)
<b>C</b> CIRCLING	3980-1 435 (500-1)	4000-1 455 (500-1)	4080-1 1/2 535 (600-1 1/2)	4240-2 1/4 695 (700-2 1/4)

SW-1, 22 FEB 2024 to 21 MAR 2024

SW-1, 22 FEB 2024 to 21 MAR 2024

WAAS CH <b>87035</b> <b>W22A</b>	APP CRS <b>216°</b>	Rwy Idg TDZE Apt Elev	<b>6800</b> <b>3522</b> <b>3545</b>
--	------------------------	-----------------------------	---

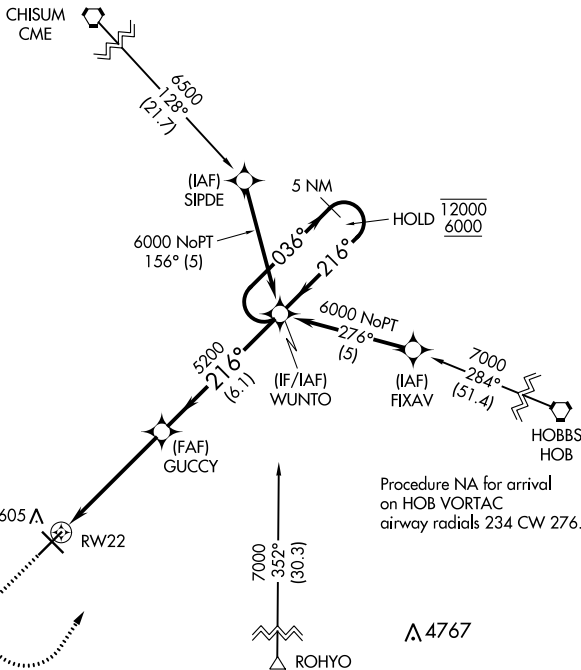
# RNAV (GPS) RWY 22

ARTESIA MUNI (ATS)

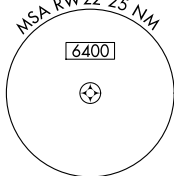
RNP APCH-GPS.	MISSED APPROACH: Climb to 4600 then climbing left turn to 6000 direct WUNTO and hold.
<p><b>▼</b> For uncompensated Baro-VNAV systems, procedure NA below -22°C or above 54°C.</p> <p><b>▲</b></p>	

AWOS-3 <b>126.725</b>	ROSWELL APP CON * <b>119.6 239.0</b>	UNICOM <b>123.075 (CTAF) 0</b>
--------------------------	---	-----------------------------------

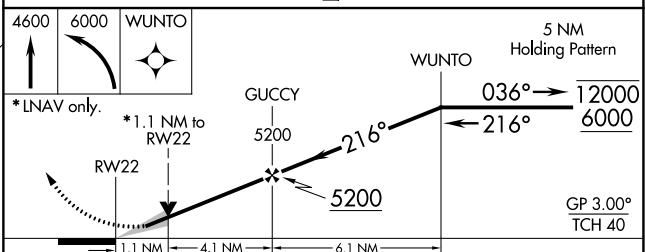
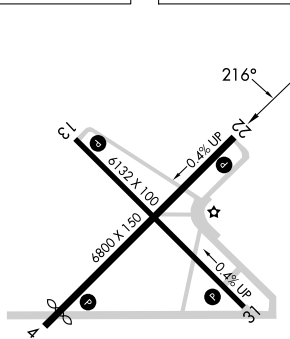
Procedure NA for arrival on CME VORTAC  
airway radials 051 CW 204.



Procedure NA for arrival on HOB VORTAC  
airway radials 234 CW 276.



ELEV 3545	TDZE 3522
-----------	-----------



CATEGORY	A	B	C	D
LPV DA		3772-1	250 (300-1)	
LNAV/VNAV DA		3772-1	250 (300-1)	
LNAV MDA		3880-1	358 (400-1)	
<b>C</b> CIRCLING	3960-1 415 (500-1)	4000-1 455 (500-1)	4040-1½ 495 (500-1½)	4240-2¼ 695 (700-2¼)

SW-1, 22 FEB 2024 to 21 MAR 2024

SW-1, 22 FEB 2024 to 21 MAR 2024

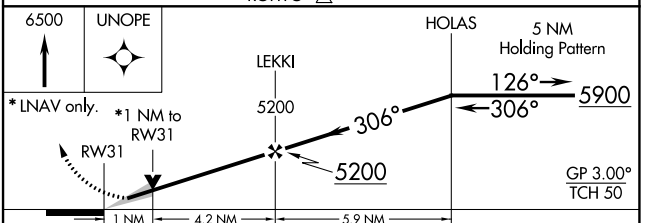
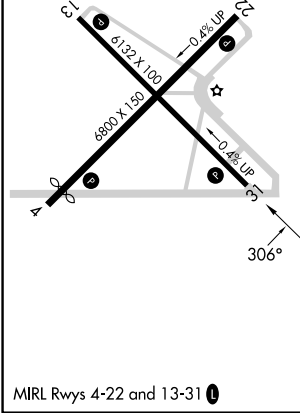
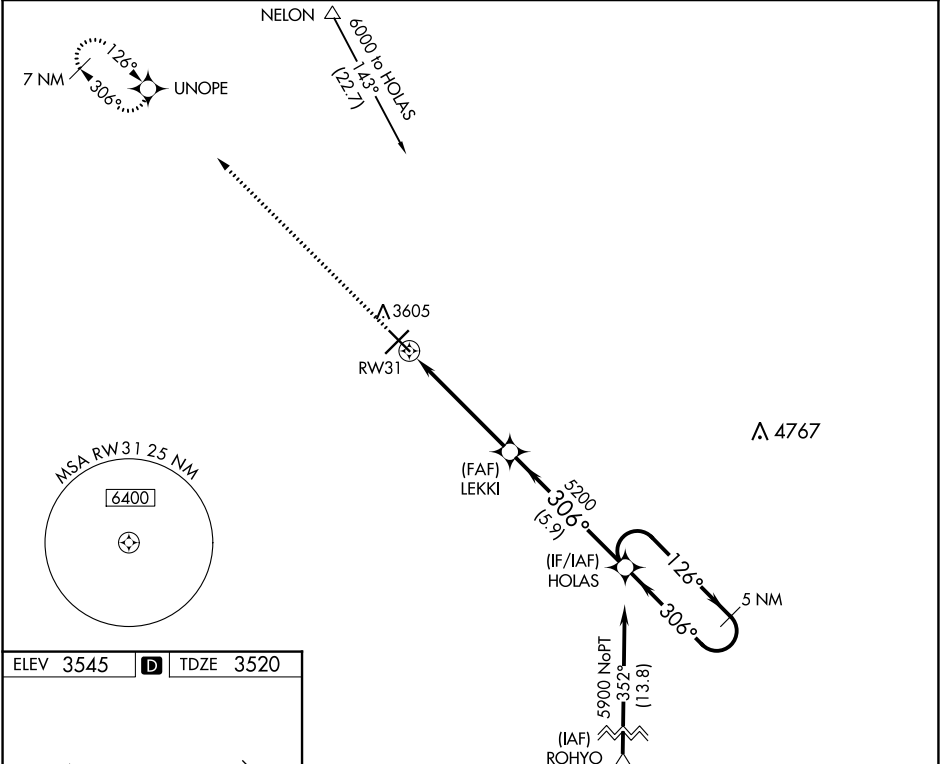
WAAS CH <b>82535</b> <b>W31A</b>	APP CRS <b>306°</b>	Rwy Idg TDZE Apt Elev	<b>6132</b> <b>3520</b> <b>3545</b>
--	------------------------	-----------------------------	---

# RNAV (GPS) RWY 31

ARTESIA MUNI (ATS)

**⚠** For uncompensated Baro-VNAV systems, LNAV/VNAV NA below -22°C (-7°F) or above 52°C (125°F). DME/DME RNP-0.3 NA. MISSED APPROACH: Climb to 6500 direct UNOPE and hold.

AWOS-3 <b>126.725</b>	ROSWELL APP CON* <b>119.6 239.0</b>	UNICOM <b>123.075 (CTAF) ①</b>
--------------------------	--	-----------------------------------



CATEGORY	A	B	C	D
LPV DA		3720-¾	200 (200-¾)	
LNAV/VNAV DA		3809-1	289 (300-1)	
LNAV MDA		3880-1	360 (400-1)	
<b>C</b> CIRCLING	3980-1 435 (500-1)	4000-1 455 (500-1)	4080-1½ 535 (600-1½)	4240-2¼ 695 (700-2¼)

SW-1, 22 FEB 2024 to 21 MAR 2024

SW-1, 22 FEB 2024 to 21 MAR 2024