

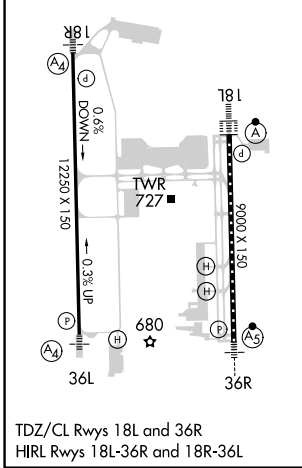
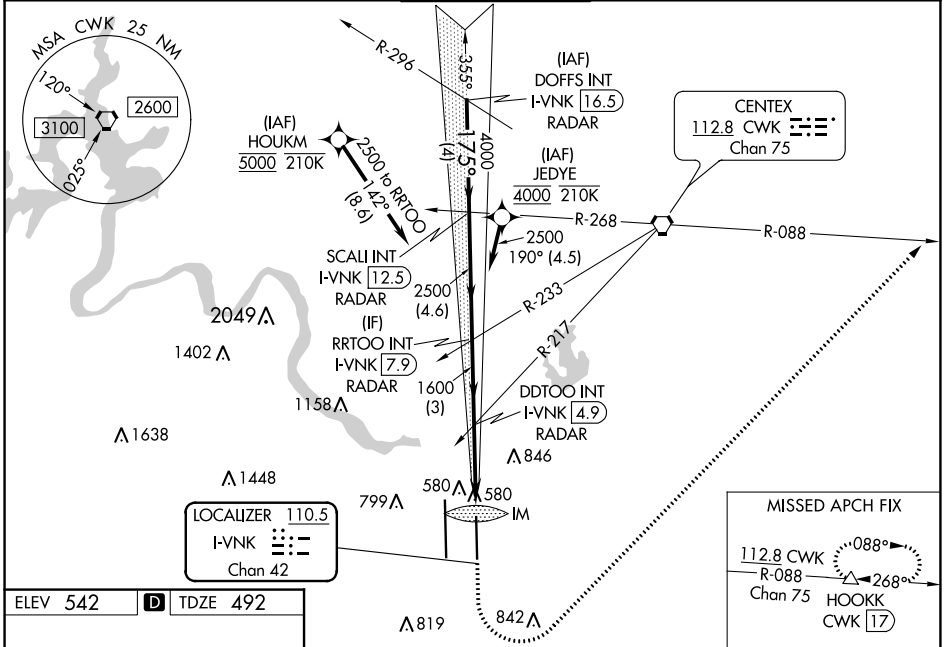
LOC/DME I-VNK 110.5 Chan 42	APP CRS 175°	Rwy Idg TDZE 492 Apt Elev 542	9000
--	------------------------	---	-------------

ILS RWY 18L (CAT II & III)

AUSTIN-BERGSTROM INTL (AUS)

RNP APCH-GPS. From HOUKM or JEDYE.		ALSF-2 	MISSED APPROACH: Climb to 1000, then climbing left turn to 3000 on heading 040° and CWK VORTAC R-088 to HOOKK/CWK 17 DME and hold.
RADAR required for procedure entry from DOFFS. DME required.			
Simultaneous approach authorized.			

D-ATIS 124.4	AUSTIN APP CON 127.225 317.65 (EAST) 120.875 270.25 (SOUTH) 119.0 370.85 (WEST)	AUSTIN TOWER 121.0 281.5	GND CON 121.9 348.6	CLNC DEL 125.5 263.0	CPDLC
------------------------	---	------------------------------------	-------------------------------	--------------------------------	-------



VGS and ILS glidepath not coincident (VGS Angle 3.00/TCH 74).				1000	3000	HOOKK
DOFFS INT I-VNK 16.5 RADAR	SCAI INT I-VNK 12.5 RADAR	RRTOO I-VNK 7.9 RADAR	DDTOO I-VNK 4.9 RADAR	hdg 040°	CWK R-088	△
5000	4000	2500	1600			
GS 3.00° TCH 61	4 NM	4.6 NM	3 NM	3.3 NM	1201'	
CATEGORY	A	B	C	D		
S-ILS 18L	CAT II RA 105/12 100 DA 592					
S-ILS 18L	CAT III RVR 06					

CATEGORY II & III ILS - SPECIAL AIRCREW & AIRCRAFT CERTIFICATION REQUIRED

SC-3, 22 FEB 2024 to 21 MAR 2024

SC-3, 22 FEB 2024 to 21 MAR 2024

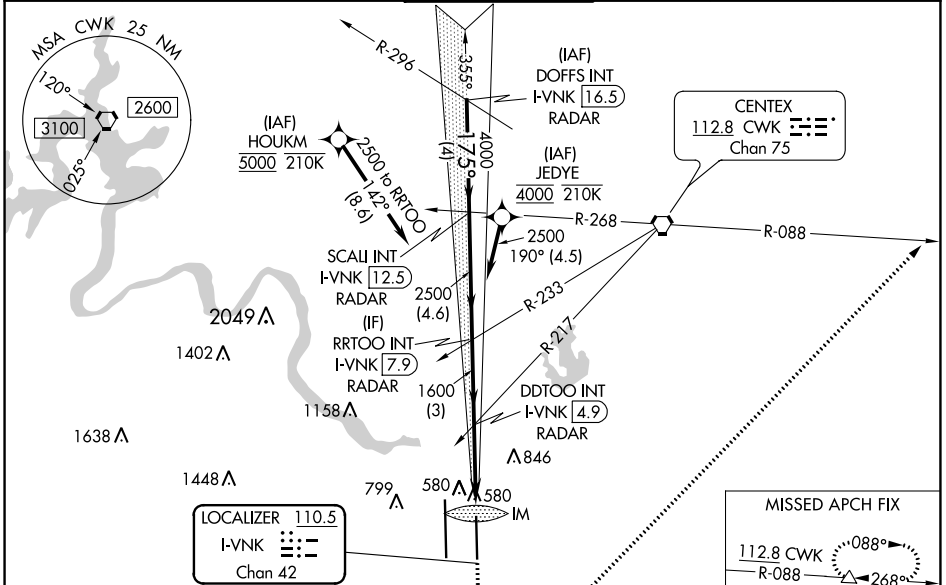
LOC/DME I-VNK 110.5 Chan 42	APP CRS 175°	Rwy Idg TDZE 492 Apt Elev 542	9000
---	------------------------	---	-------------

ILS RWY 18L (SA CAT I)

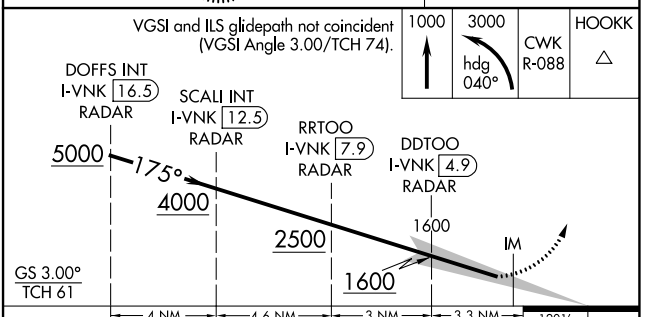
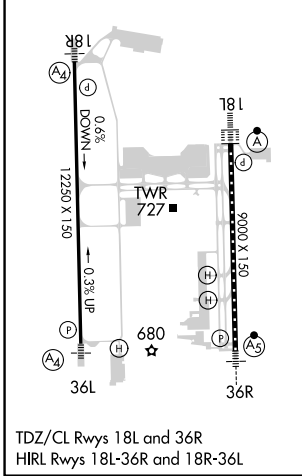
AUSTIN-BERGSTROM INTL (AUS)

RNP APCH-GPS. From HOUKM or JEDYE.	ALSF-2 A	MISSED APPROACH: Climb to 1000, then climbing left turn to 3000 on heading 040° and CWK VORTAC R-088 to HOOKK/CWK 17 DME and hold.
RADAR required for procedure entry from DOFFS. DME required.		
Simultaneous approach authorized. Requires specific OPSPEC, MSPEC or LOA approval.		

D-ATIS 124.4	AUSTIN APP CON 127.225 317.65 (EAST) 120.875 270.25 (SOUTH) 119.0 370.85 (WEST)	AUSTIN TOWER 121.0 281.5	GND CON 121.9 348.6	CLNC DEL 125.5 263.0	CPDLC
------------------------	---	------------------------------------	-------------------------------	--------------------------------	-------



ELEV 542	D TDZE 492
----------	-------------------



VGSI and ILS glidepath not coincident (VGSI Angle 3.00/TCH 74).	1000	3000	CWK R-088	HOOKK
DOFFS INT I-VNK 16.5	SCAI INT I-VNK 12.5	RRTOO I-VNK 7.9	DDTOO I-VNK 4.9	
5000	4000	2500	1600	IM
GS 3.00°	TCH 61			
CATEGORY	A	B	C	D
S-ILS 18L	RA 155/14 150 DA 642			

SA CATEGORY I - SPECIAL AIRCREW & AIRCRAFT CERTIFICATION REQUIRED

SC-3, 22 FEB 2024 to 21 MAR 2024

SC-3, 22 FEB 2024 to 21 MAR 2024

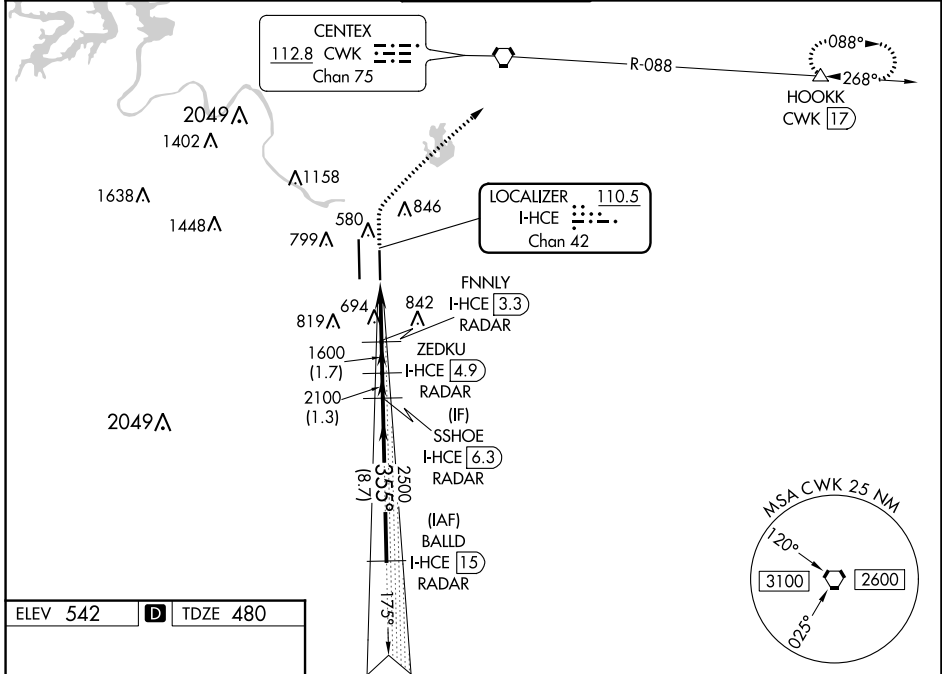
LOC/DME I-HCE 110.5 Chan 42	APP CRS 355°	Rwy Idg 9000 TDZE 480 Apt Elev 542
---	------------------------	---

ILS RWY 36R (SA CAT I & II)

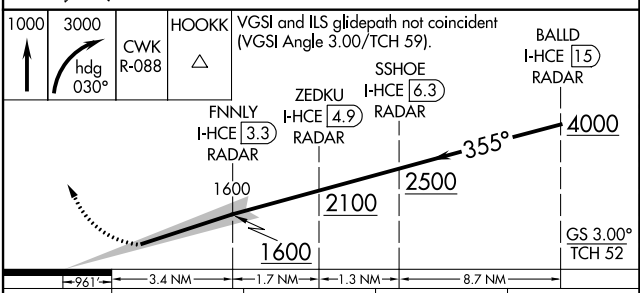
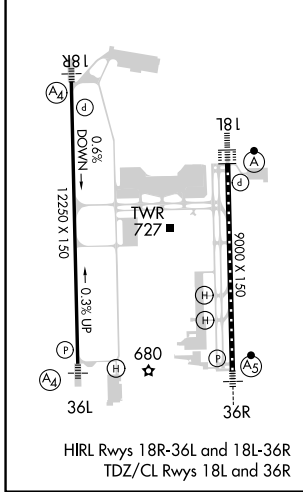
AUSTIN-BERGSTROM INTL (AUS)

DME required. RADAR required for procedure entry.		MALSR 	MISSED APPROACH: Climb to 1000 then climbing right turn to 3000 on heading 030° and CWK VORTAC R-088 to HOOKK/CWK 17 DME and hold.		
Simultaneous approach authorized. SA CAT I: Requires specific OPSPEC, MSPEC or LOA approval. SA CAT II: Requires specific OPSPEC, MSPEC or LOA approval.					

D-ATIS 124.4	AUSTIN APP CON 127.225 317.65 (EAST) 120.875 270.25 (SOUTH) 119.0 370.85 (WEST)	AUSTIN TOWER 121.0 281.5	GND CON 121.9 348.6	CLNC DEL 125.5 263.0	CPDLC
------------------------	---	------------------------------------	-------------------------------	--------------------------------	-------



ELEV 542	D	TDZE 480
----------	----------	----------



CATEGORY	A	B	C	D
S-ILS 36R	SA CAT I RA 185/14 150 DA 630			
S-ILS 36R	SA CAT II RA 110/12 100 DA 580			

SA CATEGORY I & II ILS - SPECIAL AIRCREW & AIRCRAFT CERTIFICATION REQUIRED

SC-3, 22 FEB 2024 to 21 MAR 2024

SC-3, 22 FEB 2024 to 21 MAR 2024

LOC/DME I-VNKG 110.5 Chan 42	APP CRS 175°	Rwy Idg TDZE 492 Apt Elev 542	9000
---	------------------------	---	-------------

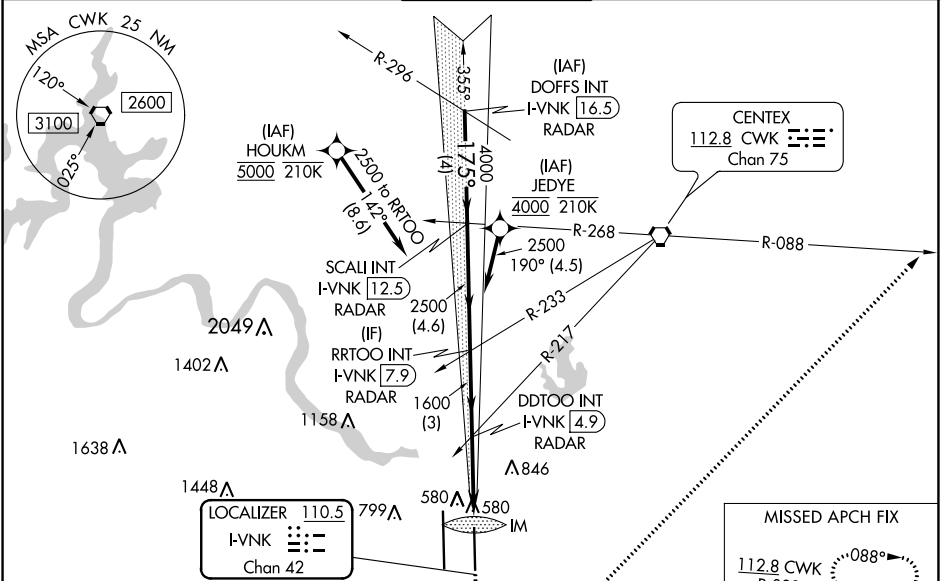
ILS or LOC RWY 18L
AUSTIN-BERGSTROM INTL (AUS)

RNP APCH-GPS. From HOUKM or JEDYE.

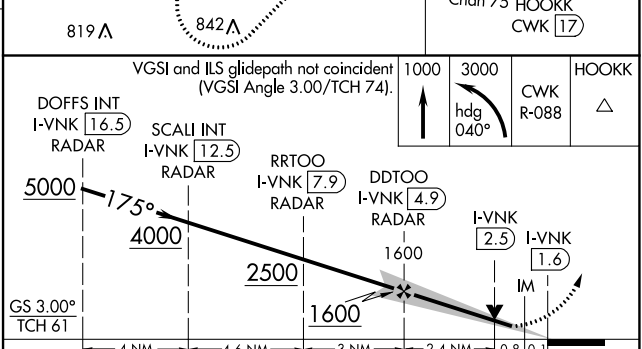
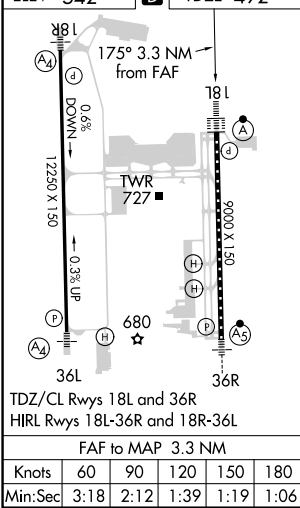
RADAR required for procedure entry from DOFFS. DME required.
 Simultaneous approach authorized. For inop ALS, increase S-ILS-18L Cat E visibility to RVR 4000, and S-LOC 18L Cats C, D, and E visibility to RVR 5500.

ALSIF-2
 MISSED APPROACH: Climb to 1000, then climbing left turn to 3000 on heading 040° and CWK VORTAC R-088 to HOOKK/CWK 17 DME and hold.

D-ATIS 124.4	AUSTIN APP CON 127.225 317.65 (EAST) 120.875 270.25 (SOUTH) 119.0 370.85 (WEST)	AUSTIN TOWER 121.0 281.5	GND CON 121.9 348.6	CLNC DEL 125.5 263.0	CPDLC
------------------------	---	------------------------------------	-------------------------------	--------------------------------	-------



ELEV 542 TDZE 492



CATEGORY	A	B	C	D	E
S-ILS 18L	692/18 200 (200-½)				
S-LOC 18L	840/24	348 (300-½)	840/30 348 (300-¾)		
CIRCLING	1040-1 498 (500-1)	1120-1 578 (600-1)	1200-1¾ 658 (700-1¾)	1200-2 658 (700-2)	1520-3 978 (1000-3)

SC-3, 22 FEB 2024 to 21 MAR 2024

SC-3, 22 FEB 2024 to 21 MAR 2024

LOC/DME I-GFQ 110.95 Chan 46(Y)	APP CRS 175°	Rwy Idg 12250 TDZE 542 Apt Elev 542
--	------------------------	--

ILS or LOC RWY 18R

AUSTIN-BERGSTROM INTL (AUS)

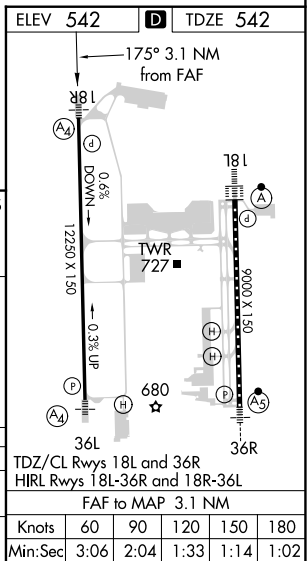
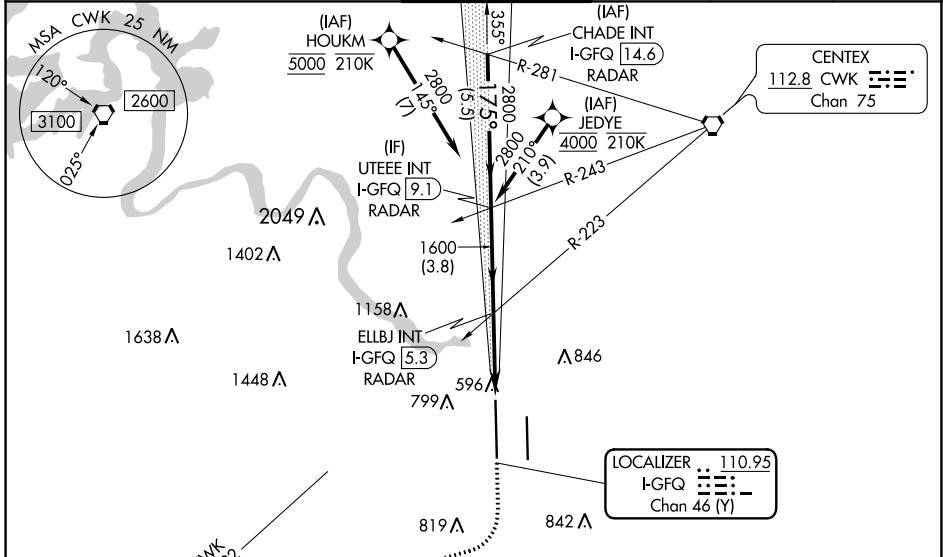
RNAV 1-GPS or RADAR required for procedure entry.
From HOUKM, JEDYE: RNAV 1-GPS required.

Simultaneous approach authorized. Inop table does not apply to S-ILS 18R. For inop ALS, increase S-LOC-18R Cats C, D and E visibility to RVR 4500.

MALS $\text{A} \text{---} \text{---} \text{---}$

MISSED APPROACH: Climb to 1000 then climbing right turn to 3500 on heading 250° and CWK VORTAC R-222 to GARDS INT/CWK 29.2 DME and hold.

D-ATIS 124.4	AUSTIN APP CON 127.225 317.65 (EAST) 120.875 270.25 (SOUTH) 119.0 370.85 (WEST)	AUSTIN TOWER 121.0 281.5	GND CON 121.9 348.6	CLNC DEL 125.5 263.0	CPDLC
------------------------	---	------------------------------------	-------------------------------	--------------------------------	-------



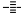

CHADE INT I-GFQ 14.6 RADAR	UTEEE INT I-GFQ 9.1 RADAR	ELLBJ INT I-GFQ 5.3 RADAR	I-GFQ 3	I-GFQ 2.2	GARDS R-222
1000	3500	hdg 250°			

CATEGORY	A	B	C	D	E
S-ILS 18R		742/40	200 (200-¾)		
S-LOC 18R		860/40	318 (400-¾)		

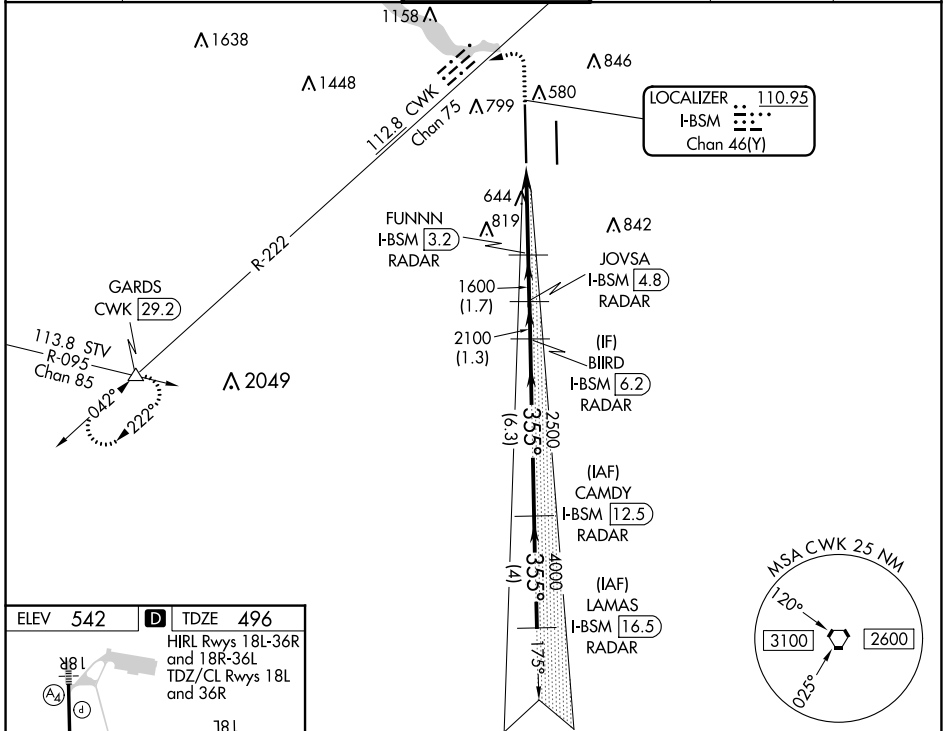
LOC/DME I-BSM	APP CRS	Rwy Idg	12250
110.95	355°	TDZE	496
Chan 46(Y)		Apt Elev	542

ILS or LOC RWY 36L

AUSTIN-BERGSTROM INTL (AUS)

DME or RADAR required.		MALS 	MISSED APPROACH: Climb to 1000 then climbing left turn to 3500 on heading 250° and CWK VORTAC R-222 to GARDS INT/CWK 29.2 DME and hold.		
 Simultaneous approach authorized. For inop ALS, increase S-LOC 36L Cats C/D/E visibility to RVR 6000. Inop table does not apply to S-ILS 36L all Cats.		(A4)			

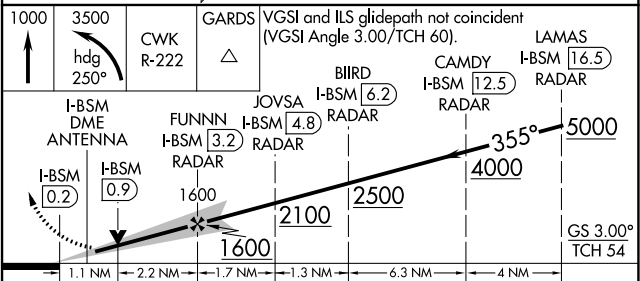
D-ATIS	AUSTIN APP CON	AUSTIN TOWER	GND CON	CLNC DEL	CPDLC
124.4	127.225 317.65 120.875 270.25 (SOUTH) 119.0 370.85 (WEST)	121.0 281.5	121.9 348.6	125.5 263.0	



SC-3, 22 FEB 2024 to 21 MAR 2024

SC-3, 22 FEB 2024 to 21 MAR 2024

ELEV	542	D	TDZE	496	
HIRL Rwsy 18L-36R and 18R-36L TDZ/CL Rwsy 18L and 36R					
FAF to MAP 3.3 NM					
Knots	60	90	120	150	180
Min:Sec	3:18	2:12	1:39	1:19	1:06



CATEGORY	A	B	C	D	E
S-ILS 36L	696/40 200 (200-3/4)				
S-LOC 36L	900/40 404 (400-3/4)		900/50 404 (400-1)		

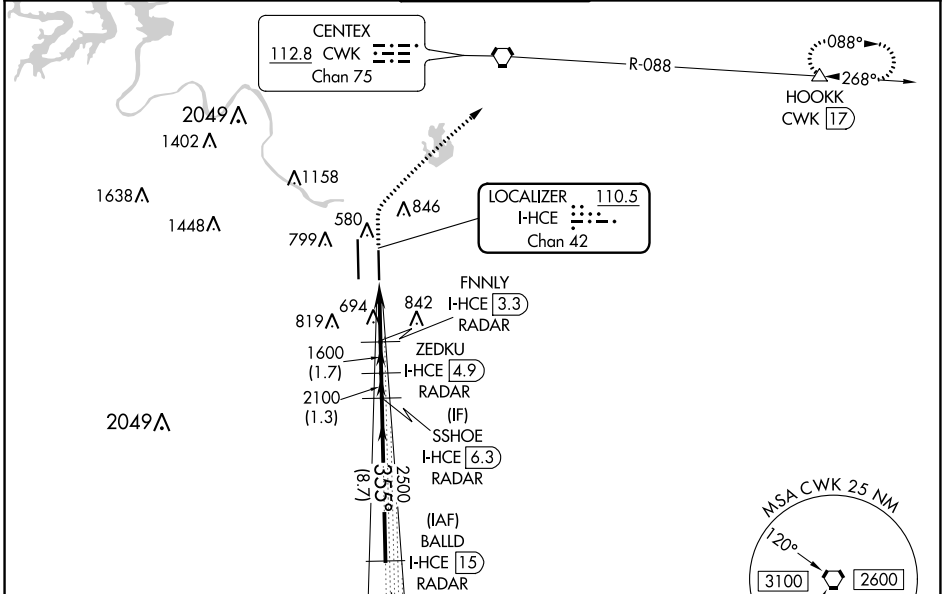
LOC/DME I-HCE 110.5 Chan 42	APP CRS 355°	Rwy Idg 9000 TDZE 480 Apt Elev 542
---	------------------------	---

ILS or LOC RWY 36R

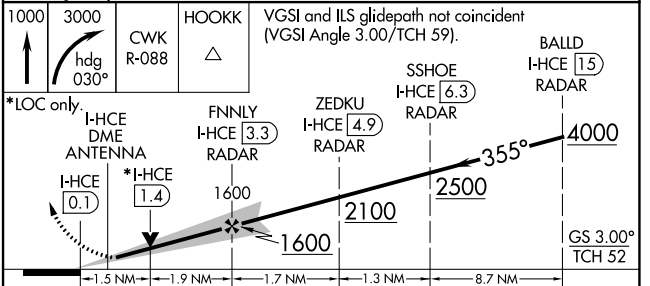
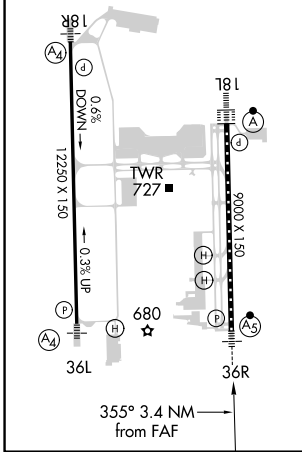
AUSTIN-BERGSTROM INTL (AUS)

DME required. RADAR required for procedure entry.		MALSR 	MISSED APPROACH: Climb to 1000 then climbing right turn to 3000 on heading 030° and CWK VORTAC R-088 to HOOKK/CWK 17 DME and hold.		
<p> Simultaneous approach authorized.</p> <p> For inop ALS, increase S-ILS 36R Cat E visibility to RVR 4000, S-LOC 36R Cats C/D/E visibility to 1 3/8 SM.</p>					

D-ATIS 124.4	AUSTIN APP CON 127.225 317.65 (EAST) 120.875 270.25 (SOUTH) 119.0 370.85 (WEST)	AUSTIN TOWER 121.0 281.5	GND CON 121.9 348.6	CLNC DEL 125.5 263.0	CPDLC
------------------------	---	------------------------------------	-------------------------------	--------------------------------	-------



ELEV 542	D TDZE 480
HIRL Rwy's 18R-36L and 18L-36R TDZ/CL Rwy's 18L and 36R	



CATEGORY	A	B	C	D	E
S-ILS 36R	680/18 200 (200-1/2)				
S-LOC 36R	1000/24	520 (500-1/2)	1000/55		520 (500-1)
C CIRCLING	1040-1 498 (500-1)	1120-1 578 (600-1)	1200-1 3/4 658 (700-1 3/4)	1200-2 658 (700-2)	1520-3 978 (1000-3)

SC-3, 22 FEB 2024 to 21 MAR 2024

SC-3, 22 FEB 2024 to 21 MAR 2024

RNAV (RNP) Z RWY 18L

AUSTIN-BERGSTROM INTL (AUS)

APP CRS	Rwy Idg	9000
175°	TDZE	492
	Apt Elev	542

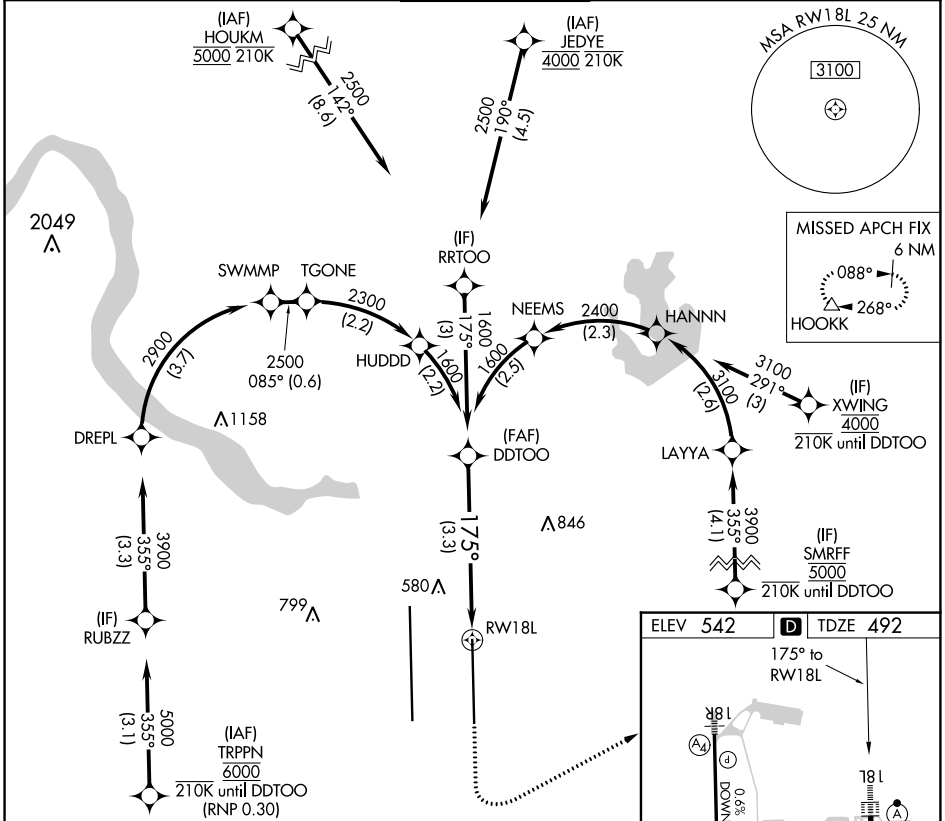
RADAR required. RNP AR APCH-GPS.

Simultaneous approach authorized. For uncompensated Baro-VNAV systems, procedure NA below -5°C or above 54°C.

ALSF-2

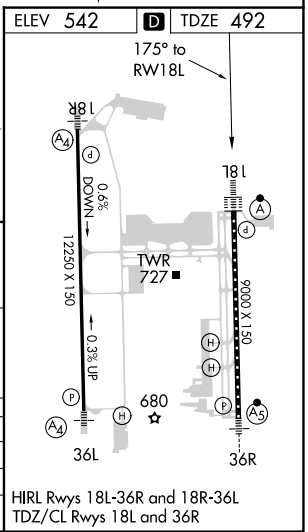
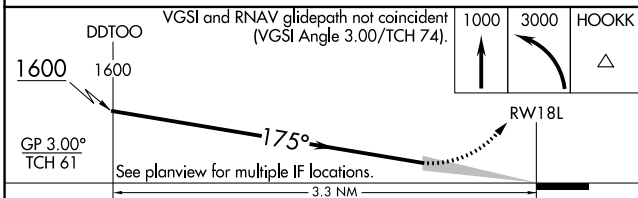
MISSED APPROACH: Climb to 1000 then climbing left turn to 3000 direct HOOKK and hold.

D-ATIS	AUSTIN APP CON	AUSTIN TOWER	GND CON	CLNC DEL	CPDLC
124.4	127.225 317.65 (EAST) 120.875 270.25 (SOUTH) 119.0 370.85 (WEST)	121.0 281.5	121.9 348.6	125.5 263.0	



SC-3, 22 FEB 2024 to 21 MAR 2024

SC-3, 22 FEB 2024 to 21 MAR 2024



CATEGORY	A	B	C	D
RNP 0.24 DA		825/26	333 (300-1/2)	
RNP 0.30 DA		885/35	393 (400-3/8)	

AUTHORIZATION REQUIRED

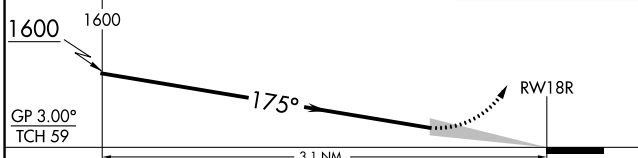
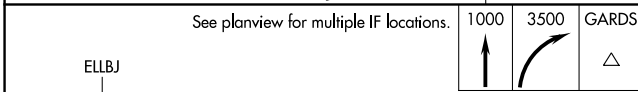
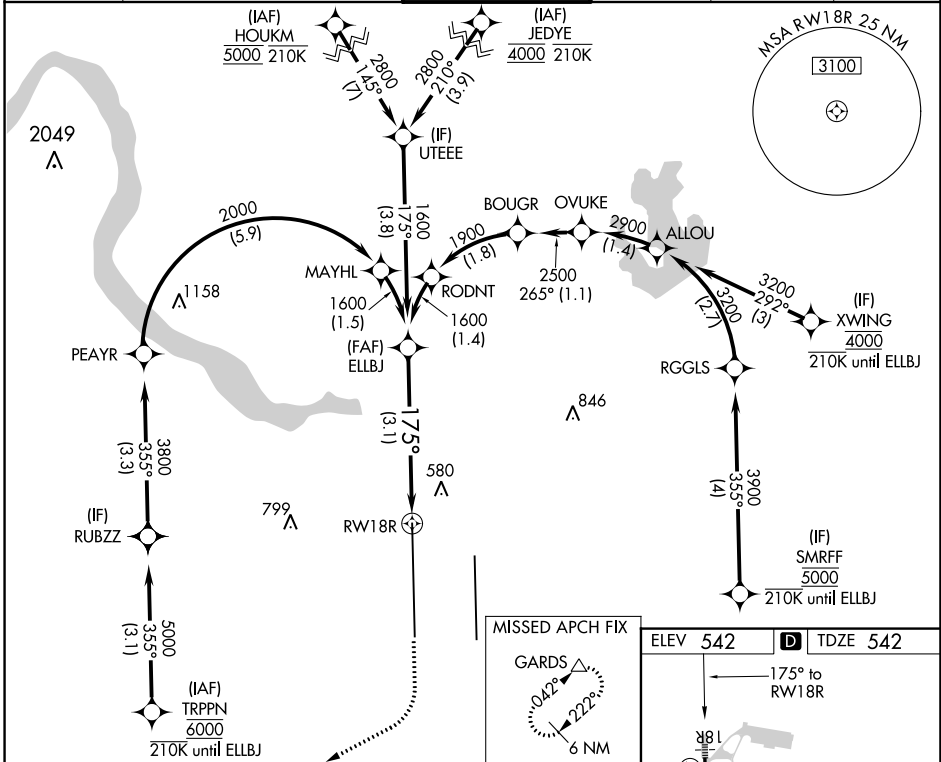
RNAV (RNP) Z RWY 18R

AUSTIN-BERGSTROM INTL (AUS)

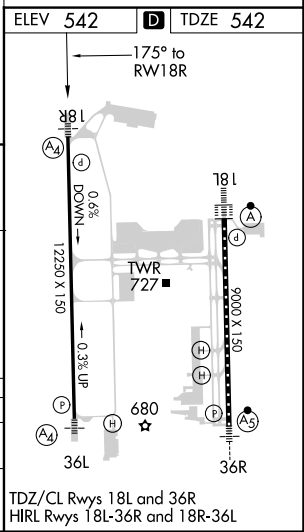
APP CRS	Rwy Idg	12250
175°	TDZE	542
	Apt Elev	542

RNP AR APCH-GPS. RADAR required.		MALS	MISSED APPROACH: Climb to 1000 then climbing right turn to 3500 direct GARDS and hold.
Simultaneous approach authorized. For uncompensated Baro-VNAV systems, procedure NA below -5°C or above 54°C.			

D-ATIS	AUSTIN APP CON	AUSTIN TOWER	GND CON	CLNC DEL	CPDLC
124.4	127.225 317.65 (EAST) 120.875 270.25 (SOUTH) 119.0 370.85 (WEST)	121.0 281.5	121.9 348.6	125.5 263.0	



See planview for multiple IF locations.	1000	3500	GARDS



CATEGORY	A	B	C	D
RNP 0.30 DA		883/40	341 (400-3/4)	

AUTHORIZATION REQUIRED

SC-3, 22 FEB 2024 to 21 MAR 2024

SC-3, 22 FEB 2024 to 21 MAR 2024

TDZ/CL Rws 18L and 36R
HIRL Rws 18L-36R and 18R-36L

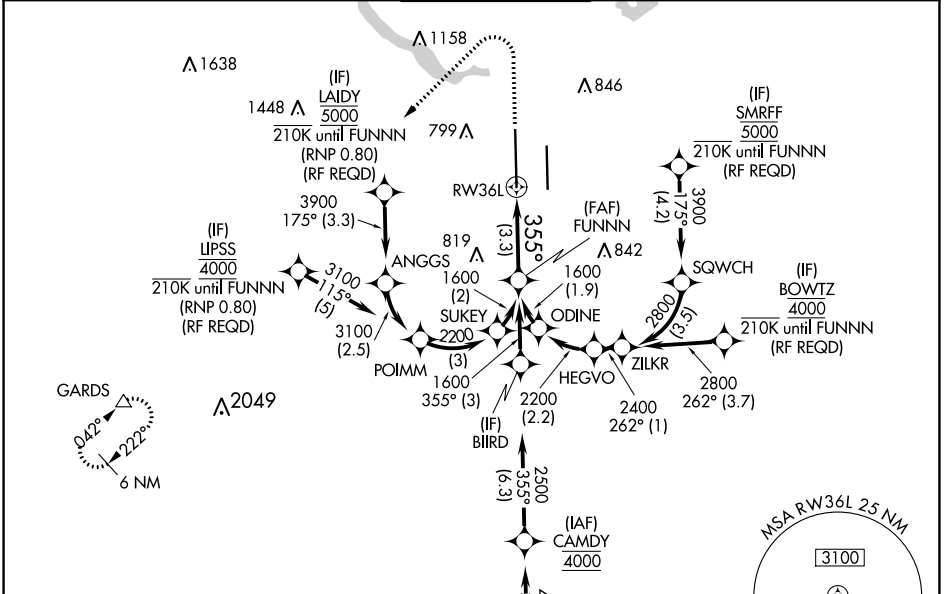
RNAV (RNP) Z RWY 36L

AUSTIN-BERGSTROM INTL (AUS)

APP CRS	Rwy Idg	12250
355°	TDZE	496
	Apt Elev	542

RNP AR APCH. RADAR required.		MALS	MISSED APPROACH: Climb to 1700 then climbing left turn to 3500 direct GARDS and hold.
<p>▼ Simultaneous approach authorized. For uncompensated Baro-VNAV systems, procedure NA below -5°C or above 54°C. For inop ALS, increase RNP 0.11 all Cats visibility to RVR 4500 and RNP 0.30 all Cats visibility to RVR 5500.</p>			

D-ATIS	AUSTIN APP CON	AUSTIN TOWER	GND CON	CLNC DEL	CPDLC
124.4	127.225 317.65 (EAST) 120.875 270.25 (SOUTH) 119.0 370.85 (WEST)	121.0 281.5	121.9 348.6	125.5 263.0	

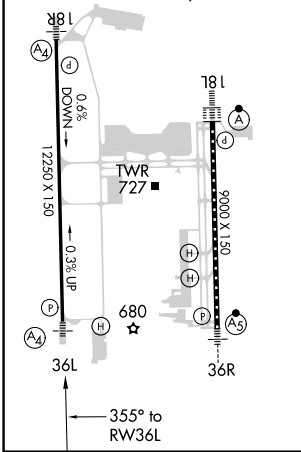


SC-3, 22 FEB 2024 to 21 MAR 2024

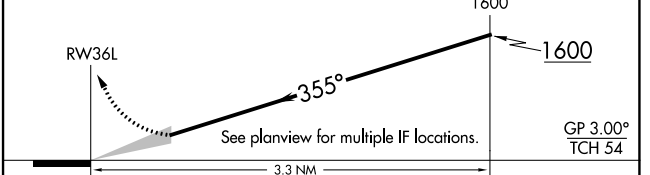
SC-3, 22 FEB 2024 to 21 MAR 2024

ELEV	542	D	TDZE	496
------	------------	----------	------	------------

HIRL Rwy 18L-36R and 18R-36L
TDZ/CL Rwy 18L and 36R



1700	3500	GARDS	VGSI and RNAV glidepath not coincident (VGSI Angle 3.00/TCH 60).
------	------	-------	--



CATEGORY	A	B	C	D
RNP 0.11 DA		758/40	262 (300-¾)	
RNP 0.30 DA		858/40	362 (400-¾)	

AUTHORIZATION REQUIRED

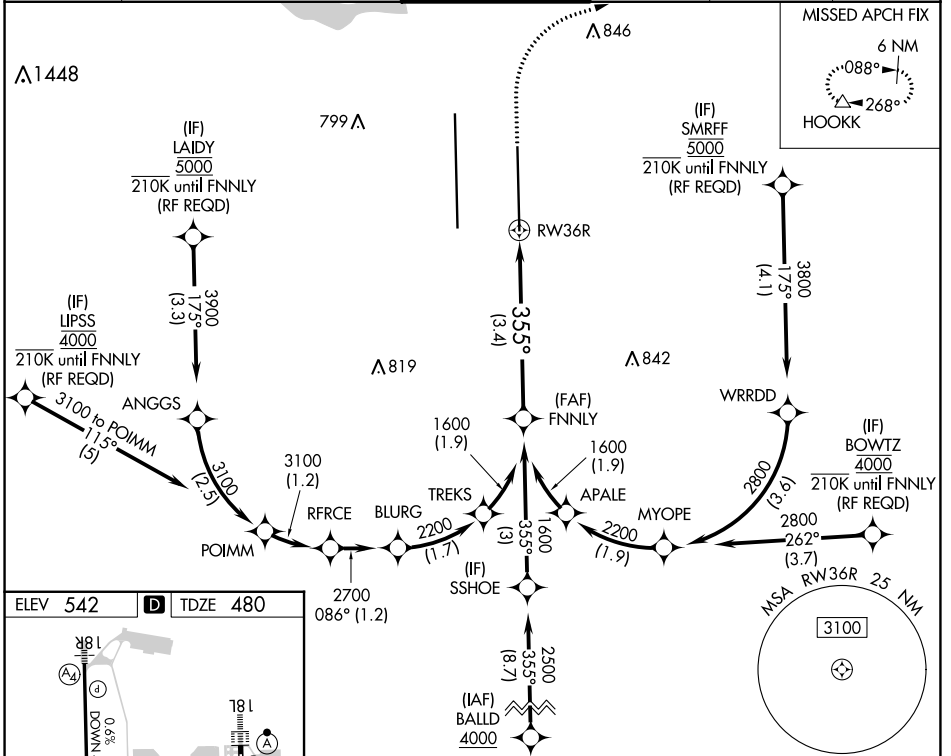
APP CRS	Rwy ldg	9000
355°	TDZE	480
	Apt Elev	542

RNAV (RNP) Z RWY 36R

AUSTIN-BERGSTROM INTL (AUS)

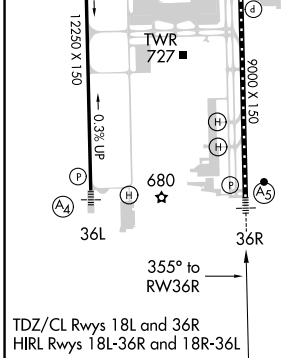
RNP AR APCH. RADAR required.		MALSR 	MISSED APPROACH: Climb to 1000 then climbing right turn to 3000 direct HOOKK and hold.	
<p>Simultaneous approach authorized. For uncompensated Baro-VNAV systems, procedure NA below -5°C or above 54°C. For inop ALS, increase RNP 0.11 all Cats visibility to RVR 4500, RNP 0.16 all Cats visibility to RVR 6000, and RNP 0.30 all Cats visibility to 1 1/4 SM.</p>				

D-ATIS	AUSTIN APP CON	AUSTIN TOWER	GND CON	CLNC DEL	CPDLC
124.4	127.225 317.65 (EAST) 120.875 270.25 (SOUTH) 119.0 370.85 (WEST)	121.0 281.5	121.9 348.6	125.5 263.0	



SC-3, 22 FEB 2024 to 21 MAR 2024

SC-3, 22 FEB 2024 to 21 MAR 2024



ELEV 542	TDZE 480	HOOKK		VGSI and RNAV glidepath not coincident (VGSI Angle 3.00/TCH 59).	FNNLY																				
		<p>See planview for multiple IF locations.</p> <p>GP 3.00° TCH 52</p>																							
		<table border="1"> <thead> <tr> <th>CATEGORY</th> <th>A</th> <th>B</th> <th>C</th> <th>D</th> </tr> </thead> <tbody> <tr> <td>RNP 0.11 DA</td> <td></td> <td>744/24</td> <td>264 (300-1/2)</td> <td></td> </tr> <tr> <td>RNP 0.16 DA</td> <td></td> <td>862/35</td> <td>382 (400-3/8)</td> <td></td> </tr> <tr> <td>RNP 0.30 DA</td> <td></td> <td>915/40</td> <td>435 (400-3/4)</td> <td></td> </tr> </tbody> </table>				CATEGORY	A	B	C	D	RNP 0.11 DA		744/24	264 (300-1/2)		RNP 0.16 DA		862/35	382 (400-3/8)		RNP 0.30 DA		915/40	435 (400-3/4)	
CATEGORY	A	B	C	D																					
RNP 0.11 DA		744/24	264 (300-1/2)																						
RNP 0.16 DA		862/35	382 (400-3/8)																						
RNP 0.30 DA		915/40	435 (400-3/4)																						
AUTHORIZATION REQUIRED																									

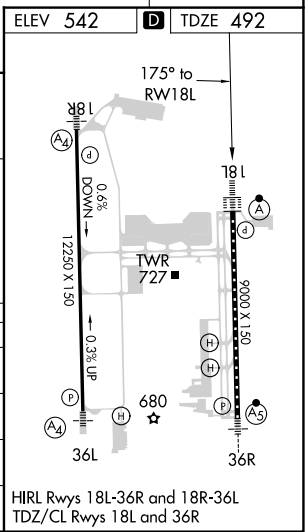
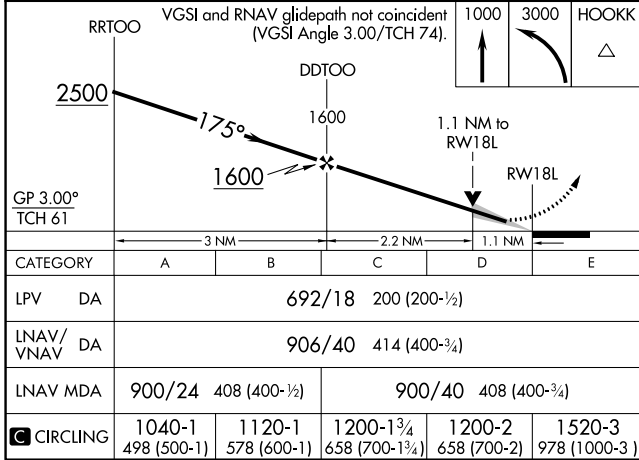
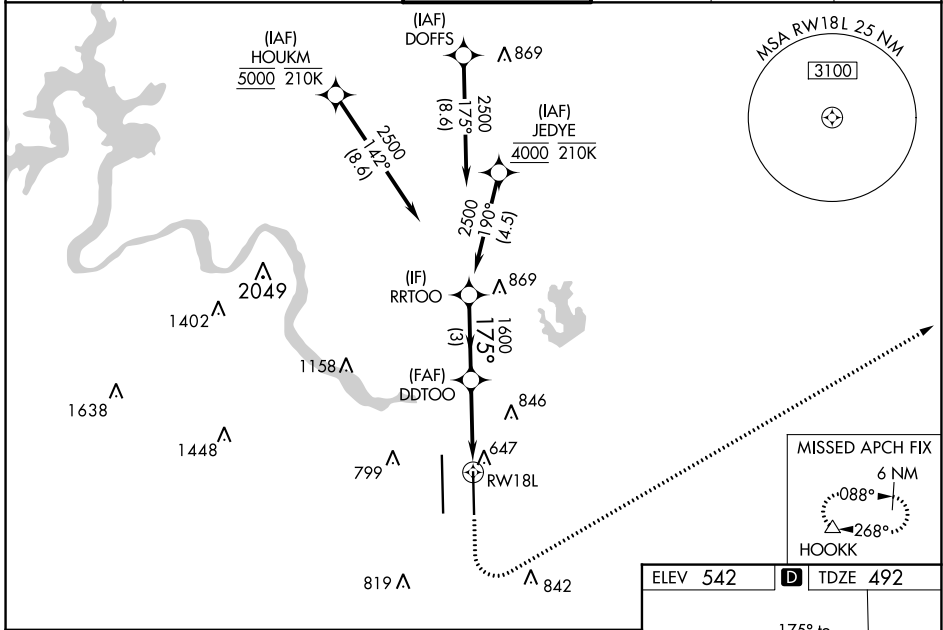
WAAS CH 62829 W18A	APP CRS 175°	Rwy Idg TDZE 492 Apt Elev 542	9000
--	------------------------	---	-------------

RNAV (GPS) Y RWY 18L

AUSTIN-BERGSTROM INTL (AUS)

RNP APCH-GPS.		ALSF-2 	MISSED APPROACH: Climb to 1000 then climbing left turn to 3000 direct HOOKK and hold.
Simultaneous approach authorized. LNAV procedure NA during simultaneous operations. Use of FD or AP required during simultaneous operations. For uncompensated Baro-VNAV systems, LNAV/VNAV NA below -5°C or above 54°C. For inop ALS, increase LPV Cat E visibility to RVR 4000, LNAV/VNAV visibility all Cats to RVR 6000, and LNAV visibility Cats C, D, and E to RVR 6000.			

D-ATIS 124.4	AUSTIN APP CON 127.225 317.65 (EAST) 120.875 270.25 (SOUTH) 119.0 370.85 (WEST)	AUSTIN TOWER 121.0 281.5	GND CON 121.9 348.6	CLNC DEL 125.5 263.0	CPDLC
------------------------	---	------------------------------------	-------------------------------	--------------------------------	-------



SC-3, 22 FEB 2024 to 21 MAR 2024

SC-3, 22 FEB 2024 to 21 MAR 2024

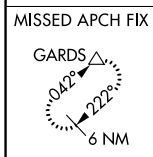
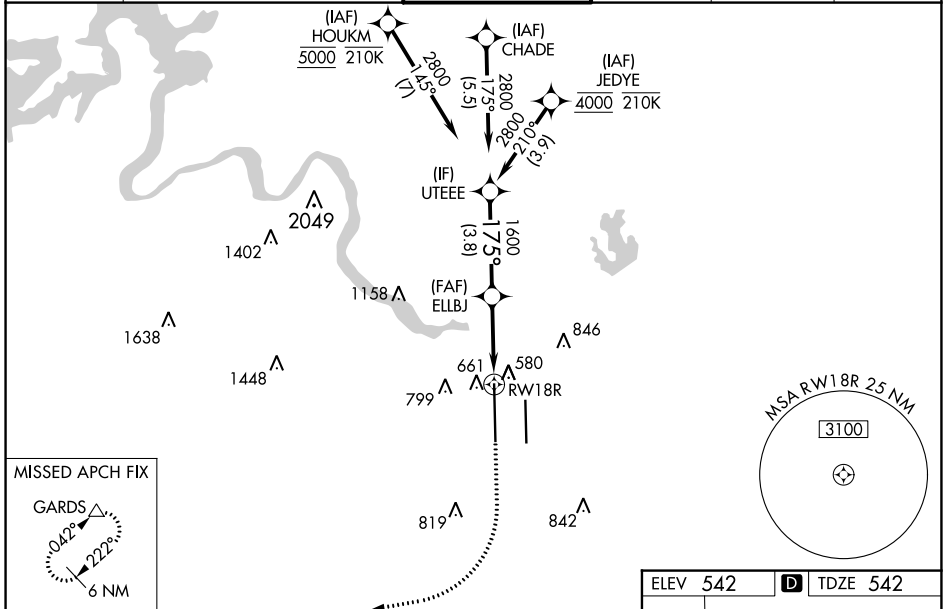
WAAS CH 77530 W18B	APP CRS 175°	Rwy Idg 12250 TDZE 542 Apt Elev 542
--	------------------------	--

RNAV (GPS) Y RWY 18R

AUSTIN-BERGSTROM INTL (AUS)

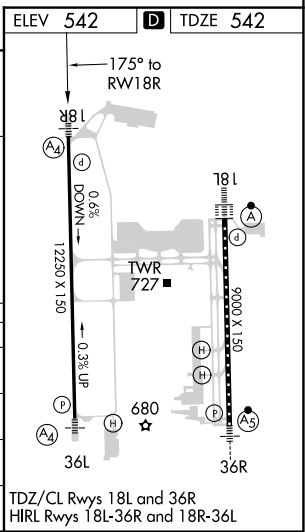
RNP APCH-GPS.	<p>Simultaneous approach authorized. LNAV procedure NA during simultaneous operations. Use of FD or AP required during simultaneous operations. Inop table does not apply to LPV. For uncompensated Baro-VNAV systems, LNAV/VNAV NA below -5°C or above 54°C. For inop ALS, increase LNAV/VNAV all Cats visibility to RVR 4500; increase LNAV Cat E visibility to RVR 5500.</p>	<p>MALS</p>	<p>MISSED APPROACH: Climb to 1000 then climbing right turn to 3500 direct GARDS and hold.</p>
---------------	---	-------------	---

D-ATIS 124.4	AUSTIN APP CON 127.225 317.65 (EAST) 120.875 270.25 (SOUTH) 119.0 370.85 (WEST)	AUSTIN TOWER 121.0 281.5	GND CON 121.9 348.6	CLNC DEL 125.5 263.0	CPDLC
------------------------	---	------------------------------------	-------------------------------	--------------------------------	-------



GP 3.00° TCH 59	3.8 NM	2.2 NM	0.9 NM
--------------------	--------	--------	--------

CATEGORY	A	B	C	D	E
LPV DA		742/40	200 (200-¾)		
LNAV/VNAV DA		834/40	292 (300-¾)		
LNAV MDA		900/40	358 (400-¾)		
CIRCLING	1040-1 498 (500-1)	1120-1 578 (600-1)	1200-1¾ 658 (700-1¾)	1200-2 658 (700-2)	1520-3 978 (1000-3)



SC-3, 22 FEB 2024 to 21 MAR 2024

SC-3, 22 FEB 2024 to 21 MAR 2024

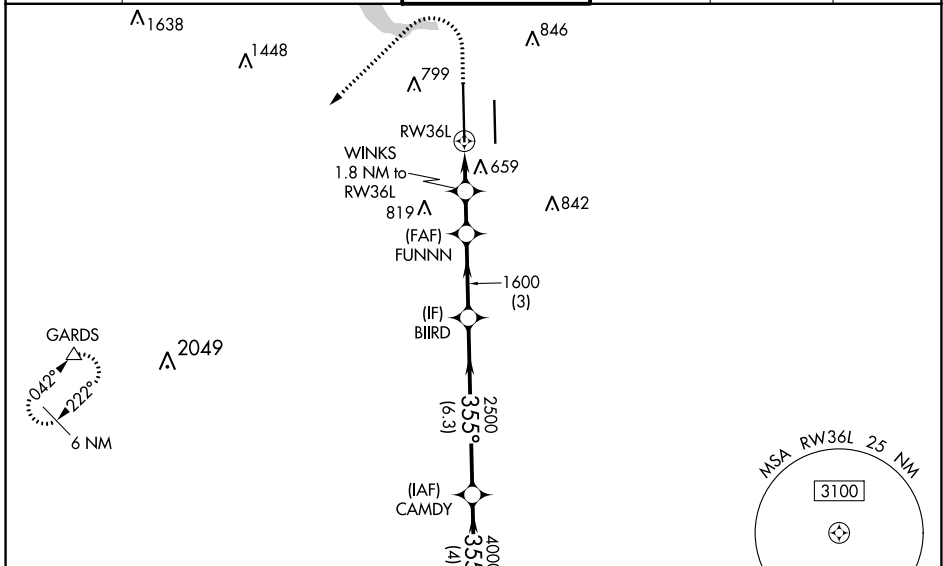
WAAS CH 90229 W36A	APP CRS 355°	Rwy Idg 12250 TDZE 496 Apt Elev 542
--	------------------------	--

RNAV (GPS) Y RWY 36L

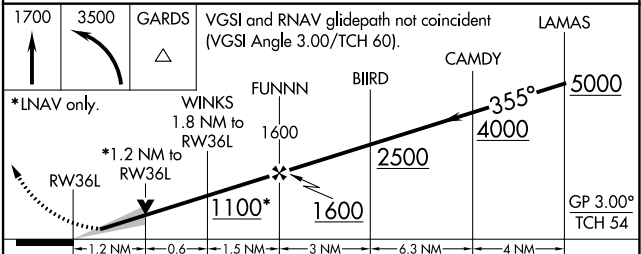
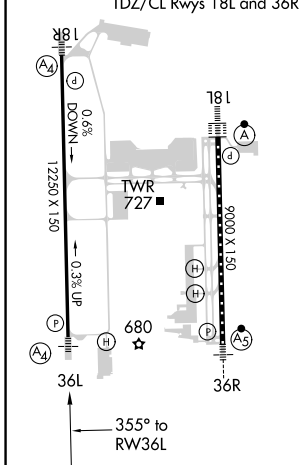
AUSTIN-BERGSTROM INTL (AUS)

RNP APCH-GPS.	MALS ④	MISSED APPROACH: Climb to 1700 then climbing left turn to 3500 direct GARDS and hold.
<p>Simultaneous approach authorized. LNAV procedure NA during simultaneous operations. Use of FD or AP required during simultaneous operations. For uncompensated Baro-VNAV systems, LNAV/VNAV NA below -5°C or above 54°C. For inop ALS, increase LNAV/ VNAV Cat E visibility to 1 3/8 SM, LNAV Cat E visibility to 1 1/4 SM. Inop table does not apply to LPV all Cats.</p>		

D-ATIS 124.4	AUSTIN APP CON 127.225 317.65 (EAST) 120.875 270.25 (SOUTH) 119.0 370.85 (WEST)	AUSTIN TOWER 121.0 281.5	GND CON 121.9 348.6	CLNC DEL 125.5 263.0	CPDLC
------------------------	---	------------------------------------	-------------------------------	--------------------------------	-------



ELEV 542	D TDZE 496
-----------------	--------------------------



CATEGORY	A	B	C	D	E
LPV DA		696/40	200 (200-3/4)		
LNAV/VNAV DA		970/60	474 (500-1 1/4)		
LNAV MDA	920/40	424 (400-3/4)	920/50	424 (400-1)	
C CIRCLING	1040-1 498 (500-1)	1120-1 578 (600-1)	1200-1 3/4 658 (700-1 1/4)	1200-2 658 (700-2)	1520-3 978 (1000-3)

WAAS CH 99429 W36B	APP CRS 355°	Rwy Idg TDZE Apt Elev	9000 480 542
--	------------------------	-----------------------------	---

RNAV (GPS) Y RWY 36R

AUSTIN-BERGSTROM INTL (AUS)

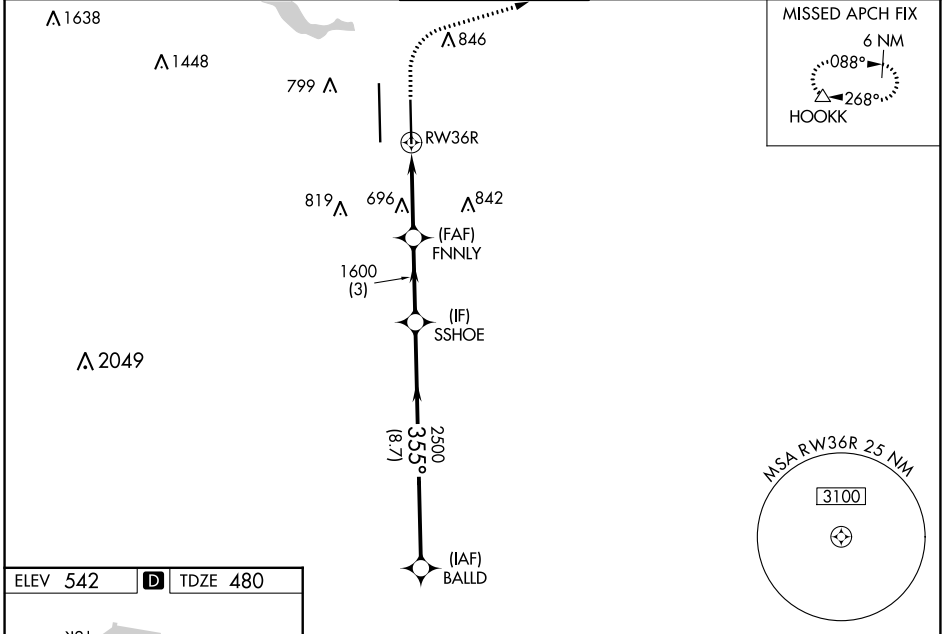
RNP APCH-GPS.

Simultaneous approach authorized. LNAV procedure NA during simultaneous operations. Use of FD or AP required during simultaneous operations. For uncompensated Baro-VNAV systems, LNAV/VNAV NA below -5°C or above 54°C. For inop ALS increase LPV Cat E visibility to RVR 4000, LNAV/VNAV all Cats visibility to 1 3/8 SM and LNAV Cat C/D/E visibility to 1 3/8 SM.

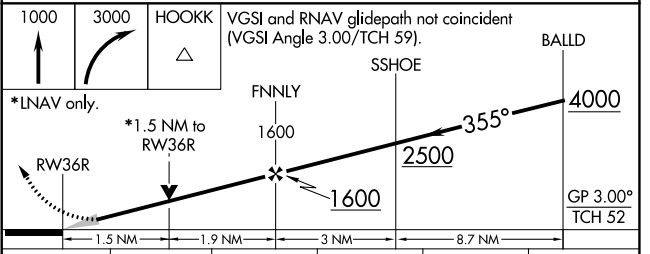
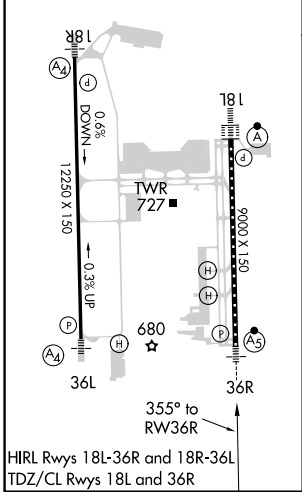
MALS R

MISSED APPROACH: Climb to 1000 then climbing right turn to 3000 direct HOOKK and hold.

D-ATIS 124.4	AUSTIN APP CON 127.225 317.65 (EAST) 120.875 270.25 (SOUTH) 119.0 370.85 (WEST)	AUSTIN TOWER 121.0 281.5	GND CON 121.9 348.6	CLNC DEL 125.5 263.0	CPDLC
------------------------	---	------------------------------------	-------------------------------	--------------------------------	-------



ELEV 542	D	TDZE 480
----------	----------	----------



CATEGORY	A	B	C	D	E
LPV DA	680/18 200 (200-1/2)				
LNAV/VNAV DA	970/50 490 (500-1)				
LNAV MDA	1000/24	520 (500-1/2)	1000/55 520 (500-1)		
C CIRCLING	1040-1 498 (500-1)	1120-1 578 (600-1)	1200-1 3/4 658 (700-1 3/4)	1200-2 658 (700-2)	1520-3 978 (1000-3)

SC-3, 22 FEB 2024 to 21 MAR 2024

SC-3, 22 FEB 2024 to 21 MAR 2024