

WAAS CH 58324 W12A	APP CRS 138°	Rwy Idg TDZE Apt Elev	6901 2022 2032
--	------------------------	-----------------------------	---

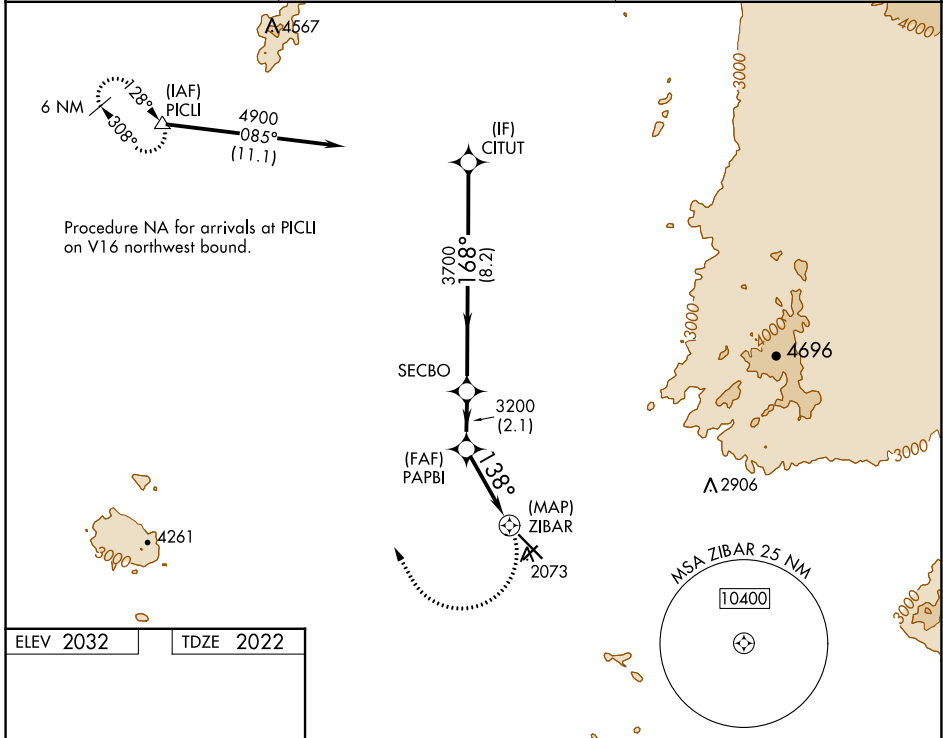
RNAV (GPS) RWY 12

MARANA RGNL (AVQ)

⚠️ DME/DME RNP-0.3 NA. When local altimeter setting not received, use Ryan Fld altimeter setting and increase all MDA 100 feet, increase LP and LNAV Cat C visibility ¼ SM and Circling Cat C visibility ½ SM.

⚠️ MISSED APPROACH: Climbing right turn to 6500 direct PICLI and hold, continue climb-in-hold to 6500.

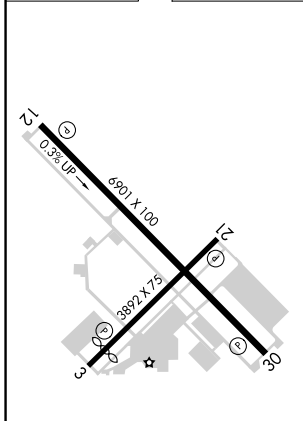
AWOS-3 118.375	TUCSON APP CON 119.4 318.1	UNICOM 123.0 (CTAF) 0
--------------------------	--------------------------------------	---------------------------------



SW-4, 22 FEB 2024 to 21 MAR 2024

SW-4, 22 FEB 2024 to 21 MAR 2024

ELEV 2032	TDZE 2022
-----------	-----------



REIL Rwy's 3 and 21
REIL Rwy's 12 and 30
MIRL Rwy's 3-21 and 12-30

	CITUT	SECBO	PAPBI	ZIBAR	6500	PICLI
	4900	3700	3200	2073		△
CATEGORY	A	B	C	D		
LP MDA	2420-1	398 (400-1)	2420-1 1/8 398 (400-1 1/8)	NA		
LNAV MDA	2440-1	418 (500-1)	2440-1 1/4 418 (500-1 1/4)	NA		
CIRCLING	2440-1 408 (500-1)	2540-1 508 (600-1)	2680-1 3/4 648 (700-1 3/4)	NA		

WAAS CH 56325 W21A	APP CRS 199°	Rwy Idg TDZE 2026 Apt Elev 2031	3892
--	------------------------	---	-------------

RNAV (GPS) RWY 21

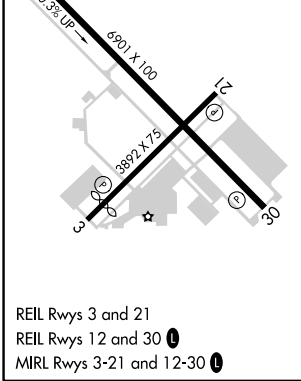
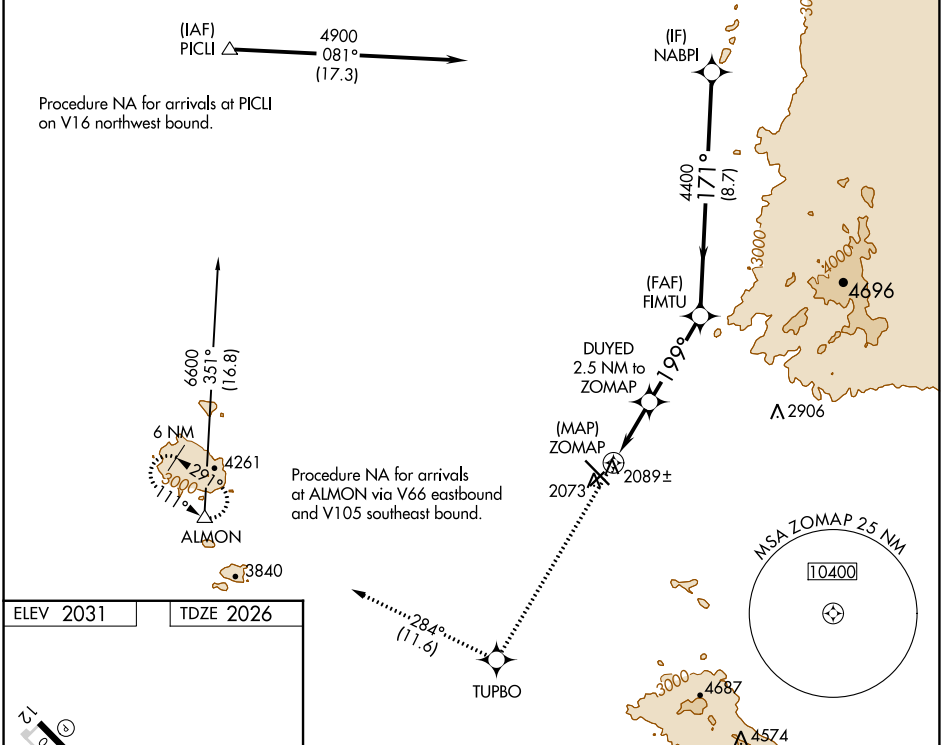
MARANA RGNL (AVQ)

RNP APCH.

NA Rwy 21 helicopter visibility reduction below 1 SM NA. When local altimeter setting not received, use Ryan Fld altimeter setting and increase all MDAs 100 feet, increase LP Cat C visibility $\frac{1}{8}$ SM and increase LNAV Cat C visibility $\frac{1}{4}$ SM.

MISSED APPROACH: Climb to 6700 direct TUPBO and on track 284° to ALMON and hold, continue climb-in-hold 6700.

AWOS-3 118.375	TUCSON APP CON 119.4 318.1	UNICOM 123.0 (CTAF)
--------------------------	--------------------------------------	-------------------------------



6700	TUPBO	tr 284°	ALMON	VGSI and descent angles not coincident (VGSI Angle 2.91/TCH 41).	NABPI		
				FIMTU			
				DUYED 2.5 NM to ZOMAP $\leq 3.35^\circ$ TCH 40	4900		
				ZOMAP	4400		
				3120			
				0.5	2.5 NM	3.6 NM	8.7 NM
CATEGORY	A	B	C	D			
LP MDA	2340-1 314 (400-1)			NA			
LNAV MDA	2640-1	614 (700-1)	2640-1 $\frac{3}{4}$	614 (700-1 $\frac{3}{4}$)	NA		

SW-4, 22 FEB 2024 to 21 MAR 2024

SW-4, 22 FEB 2024 to 21 MAR 2024

APP CRS	Rwy Idg	3398
033°	TDZE	2026
	Apt Elev	2032

RNAV (GPS) RWY 3

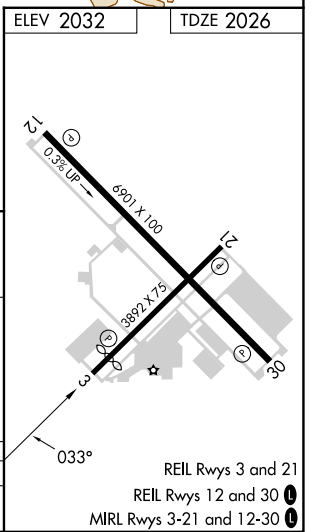
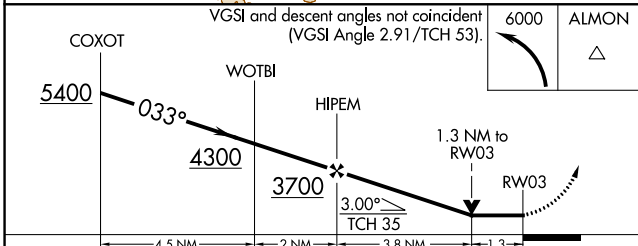
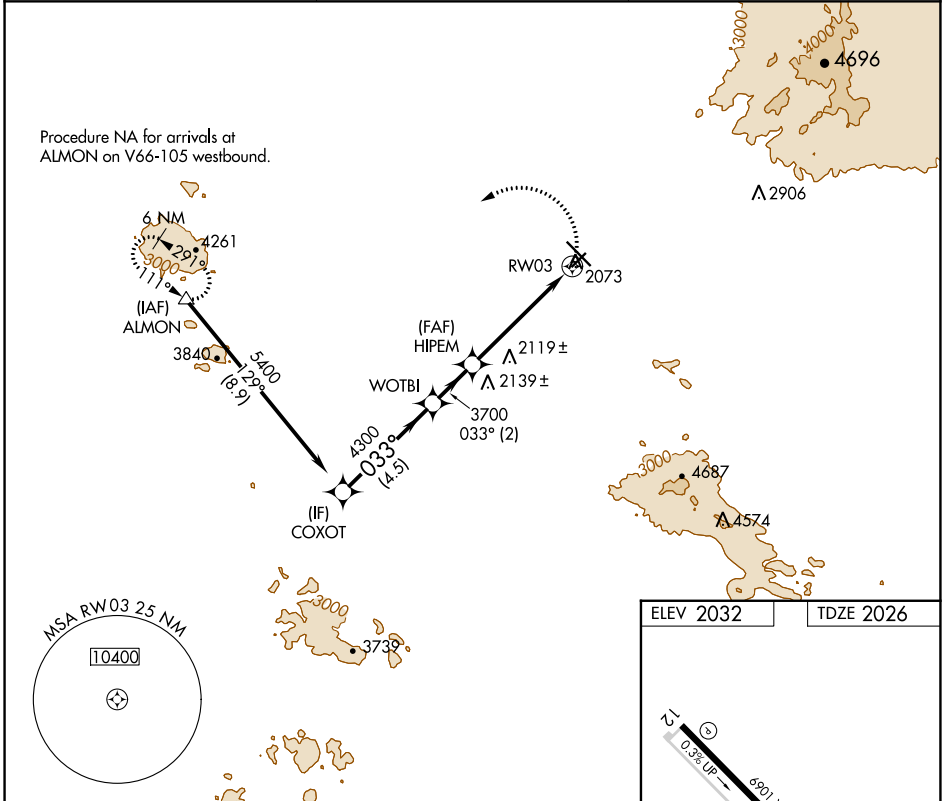
MARANA RGNL (AVQ)

RNP APCH.

▼ VDP NA when using Ryan Fld altimeter setting. Rwy 3 helicopter visibility reduction below 3/4 SM NA. When local altimeter setting not received, use Ryan Field altimeter setting and increase all MDAs 100 feet and LNAV Cat C visibility 1/4 SM.

MISSED APPROACH: Climbing left turn to 6000 direct ALMON and hold, continue climb-in-hold to 6000.

AWOS-3 118.375	TUCSON APP CON 119.4 318.1	UNICOM 123.0 (CTAF) 0
--------------------------	--------------------------------------	---------------------------------



CATEGORY	A	B	C	D
LNAV MDA	2480-1	454 (500-1)	2480-1 3/8 454 (500-1 3/8)	NA

SW-4, 22 FEB 2024 to 21 MAR 2024

SW-4, 22 FEB 2024 to 21 MAR 2024

APP CRS	Rwy Idg	N/A
282°	TDZE	N/A
	Apt Elev	2032

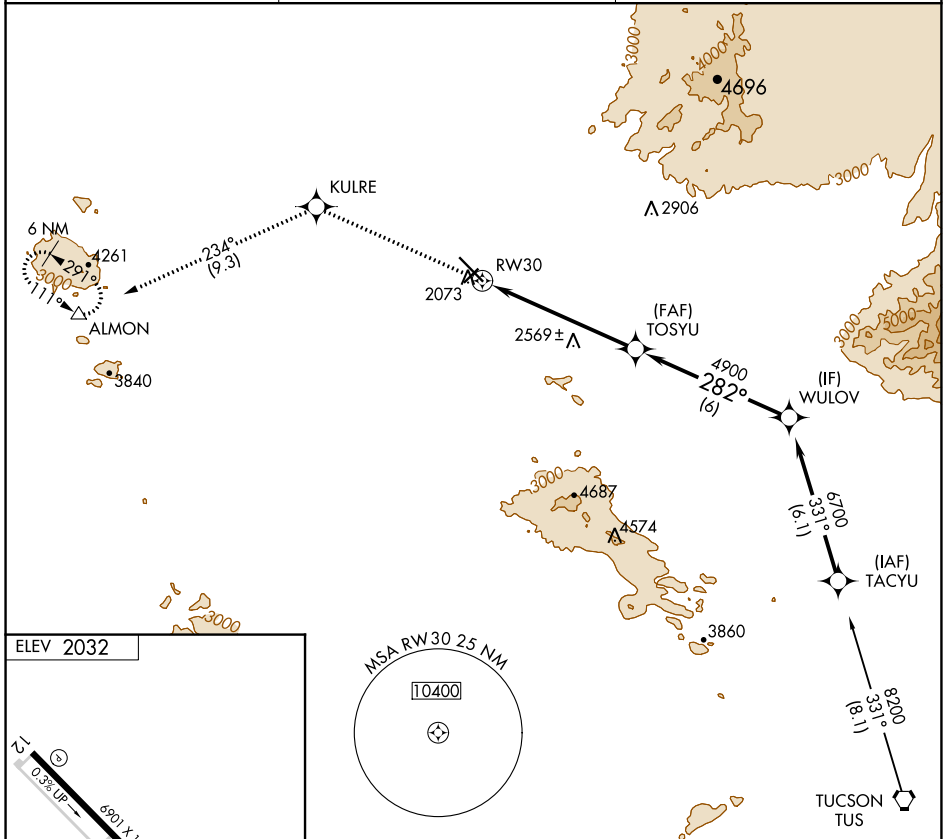
RNAV (GPS)-E

MARANA RGNL (AVQ)

⚠ When local altimeter setting not received, use Ryan Fld altimeter setting and increase all MDAs 100 feet and increase Circling Cat A visibility ¼ SM and Cat C ½ SM. DME/DME RNP-0.3 NA.

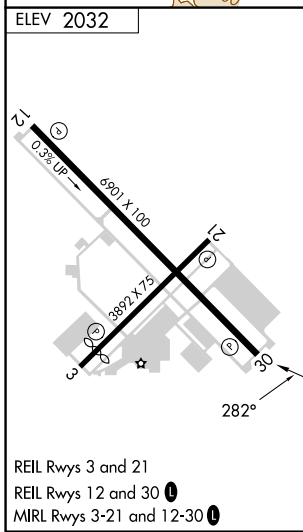
⚠ MISSED APPROACH: Climb to 6000 direct KULRE and 234° track to ALMON and hold, continue climb-in-hold to 6000.

AWOS-3 118.375	TUCSON APP CON 119.4 318.1	UNICOM 123.0 (CTAF) 0
--------------------------	--------------------------------------	---------------------------------



SW-4, 22 FEB 2024 to 21 MAR 2024

SW-4, 22 FEB 2024 to 21 MAR 2024



6000	KULRE	234° tr	ALMON	TOSYU	WULOV
				4900	6700
				6 NM	6 NM
CATEGORY	A	B	C	D	
C CIRCLING	2820-1 788 (800-1)	2820-1¼ 788 (800-1¼)	2820-2¼ 788 (800-2¼)	NA	