

APP CRS	Rwy Idg	5003
235°	TDZE	1458
	Apt Elev	1458

RNAV (GPS) RWY 24

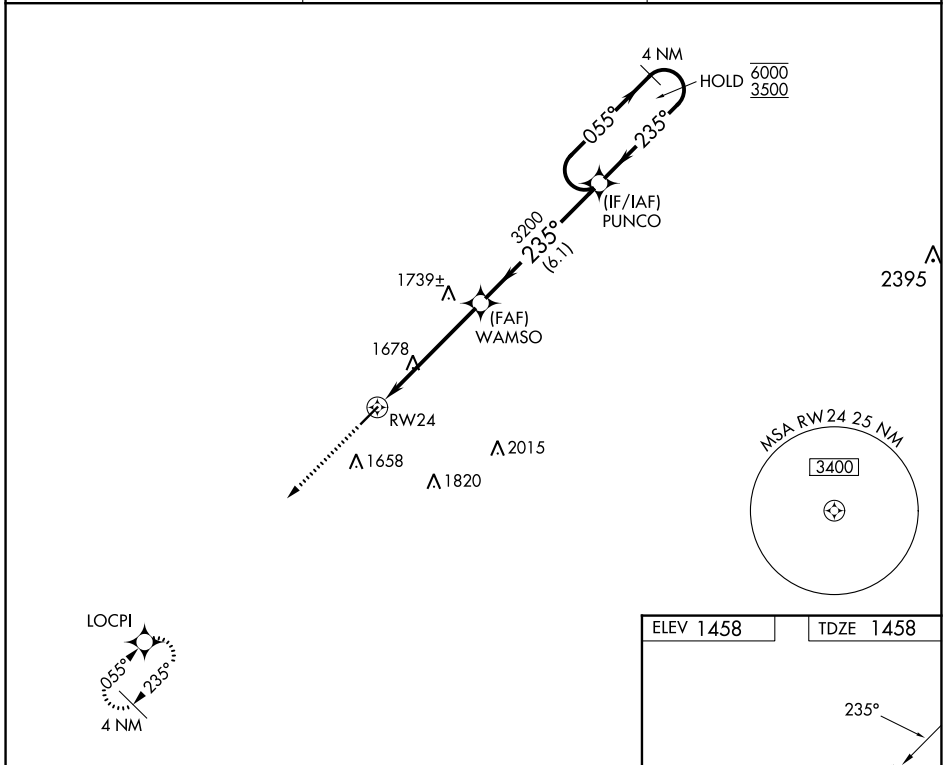
CLARION COUNTY (AXQ)

RNP APCH.

⚠ **NA** Rwy 24 helicopter visibility reduction below 3/4 SM NA. VDP NA when using Dubois altimeter setting. When local altimeter setting not received, use Dubois altimeter setting and increase all MDA 120 feet and LNAV Cat B/C/D and Circling Cat C visibility 5/8 SM, Circling Cat B visibility 1/4 SM, Cat D visibility 1/2 SM.

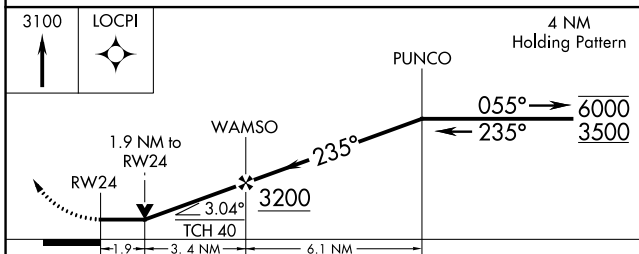
MISSED APPROACH:
Climb to 3100 direct
LOCPI and hold.

AWOS-3 118.275	CLEVELAND CENTER 126.725 291.65	UNICOM 122.8 (CTAF) 0
--------------------------	---	---------------------------------

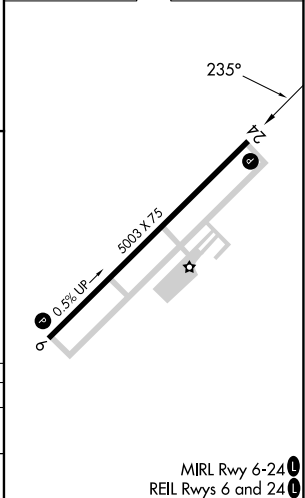


NE-4, 22 FEB 2024 to 21 MAR 2024

NE-4, 22 FEB 2024 to 21 MAR 2024



ELEV 1458	TDZE 1458
-----------	-----------



CATEGORY	A	B	C	D
LNAV MDA	2100-1	642 (700-1)	2100-1 7/8 642 (700-1 7/8)	2100-2 642 (700-2)
CIRCLING	2100-1	642 (700-1)	2100-1 7/8 642 (700-1 7/8)	2180-2 1/4 722 (800-2 1/4)

MIRL Rwy 6-24 0
REIL Rwys 6 and 24 0

WAAS CH 70606 W06A	APP CRS 055°	Rwy Idg TDZE Apt Elev	5003 1451 1458
--	------------------------	-----------------------------	---

RNAV (GPS) RWY 6

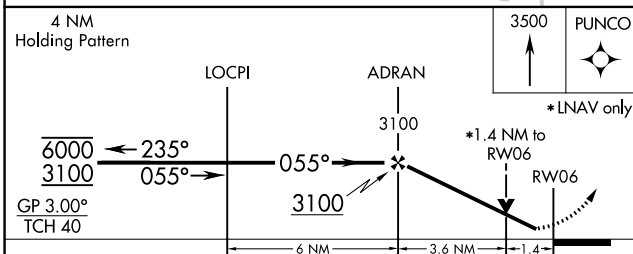
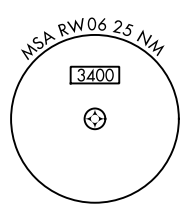
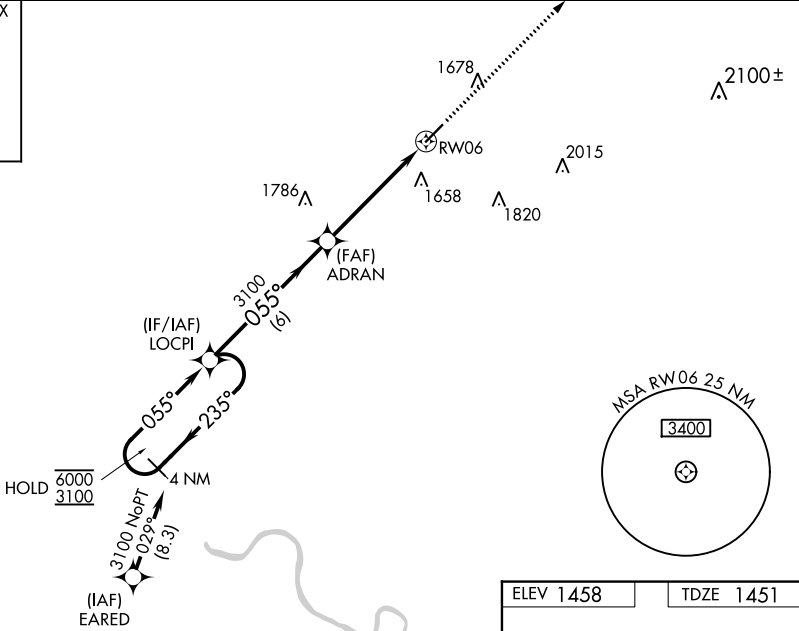
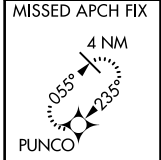
CLARION COUNTY (A.X.Q)

RNP APCH.

NA Baro-VNAV and VDP NA when using Dubois altimeter setting. Rwy 6 helicopter visibility reduction below $\frac{3}{4}$ NA. For uncompensated Baro-VNAV systems, LNAV/VNAV NA below -17°C or above 54°C. When local altimeter setting not received, use Dubois altimeter setting and increase LPV DA to 1809 feet, LNAV/VNAV DA to 2093 feet, and all visibilities $\frac{3}{8}$ SM; increase all MDAs 120 feet and LNAV visibility Cts C/D $\frac{3}{8}$ SM, and Circling Cts C/D visibility $\frac{1}{2}$ SM.

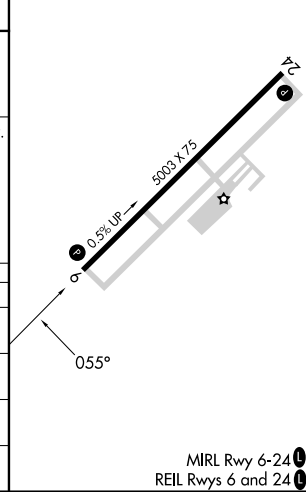
MISSED APPROACH: Climb to 3500 direct PUNCO and hold.

AWOS-3 118.275	CLEVELAND CENTER 126.725 291.65	UNICOM 122.8 (CTAF) 0
--------------------------	---	---------------------------------



ELEV 1458	TDZE 1451
-----------	-----------

CATEGORY	A	B	C	D
LPV DA	1701-1		250 (300-1)	
LNAV/VNAV DA	1985-1½		534 (600-1½)	
LNAV MDA	1920-1	469 (500-1)	1920-1¾	469 (500-1¾)
CIRCLING	1980-1	522 (600-1)	2100-1¾ 642 (700-1¾)	2180-2¼ 722 (800-2¼)



NE-4, 22 FEB 2024 to 21 MAR 2024

NE-4, 22 FEB 2024 to 21 MAR 2024