

WAAS CH <b>69205</b> <b>W17A</b>	APP CRS <b>170°</b>	Rwy Idg TDZE <b>5000</b> <b>763</b> Apt Elev <b>763</b>
--	------------------------	--

# RNAV (GPS) RWY 17

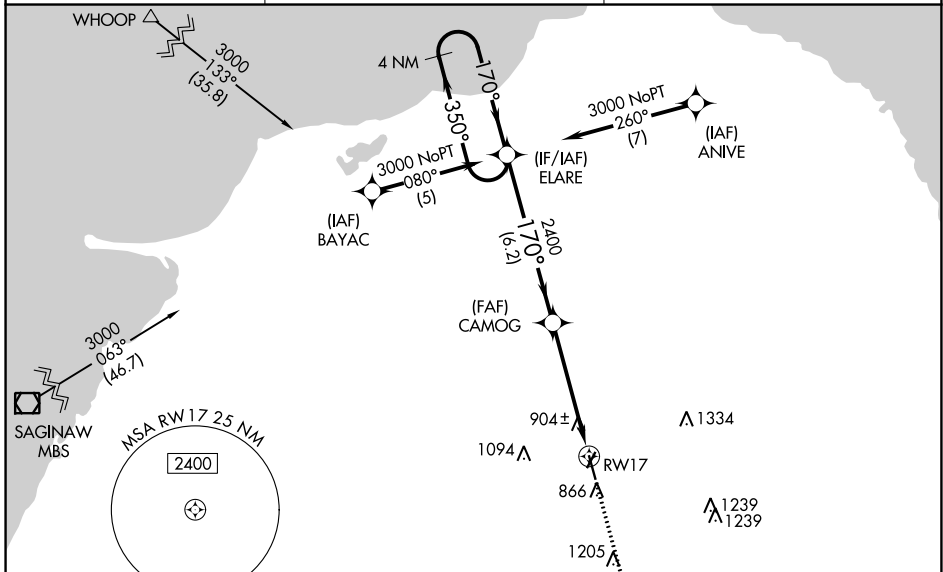
HURON COUNTY MEML (BAX)

RNP APCH.

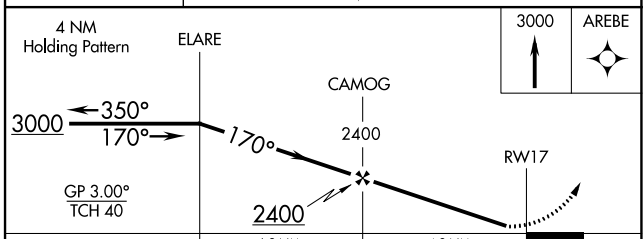
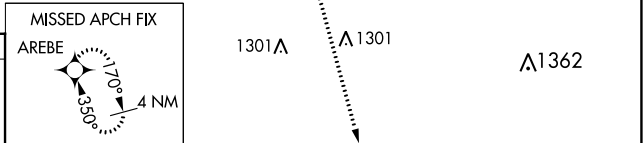
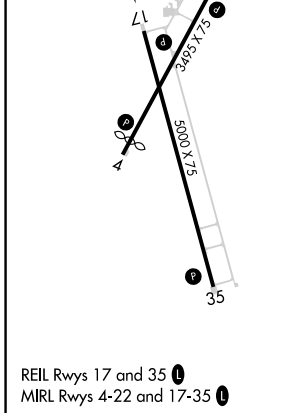
Baro-VNAV NA when using MBS Intl altimeter setting. For uncompensated Baro-VNAV systems, LNAV/VNAV NA below -16°C or above 54°C. When local altimeter setting not received, use MBS Intl altimeter setting and increase all DA 129 feet and all MDA 140 feet, increase LPV all Cats visibility 3/8 mile; increase LNAV Cat C 1/2 mile. Rwy 17 helicopter visibility reduction below 3/4 SM NA.

MISSED APPROACH: Climb to 3000 direct AREBE and hold.

AWOS-3 <b>118.6</b>	CLEVELAND CENTER <b>127.7 290.425</b>	UNICOM <b>123.075 (CTAF) 0</b>
------------------------	--	-----------------------------------



ELEV 763	TDZE 763
----------	----------



CATEGORY	A	B	C	D
LPV DA	1075-1	312 (400-1)		NA
LNAV/VNAV DA	1352-2	589 (600-2)		NA
LNAV MDA	1220-1	457 (500-1)	1220-1 1/4 457 (500-1 1/4)	NA

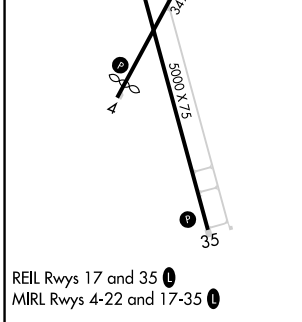
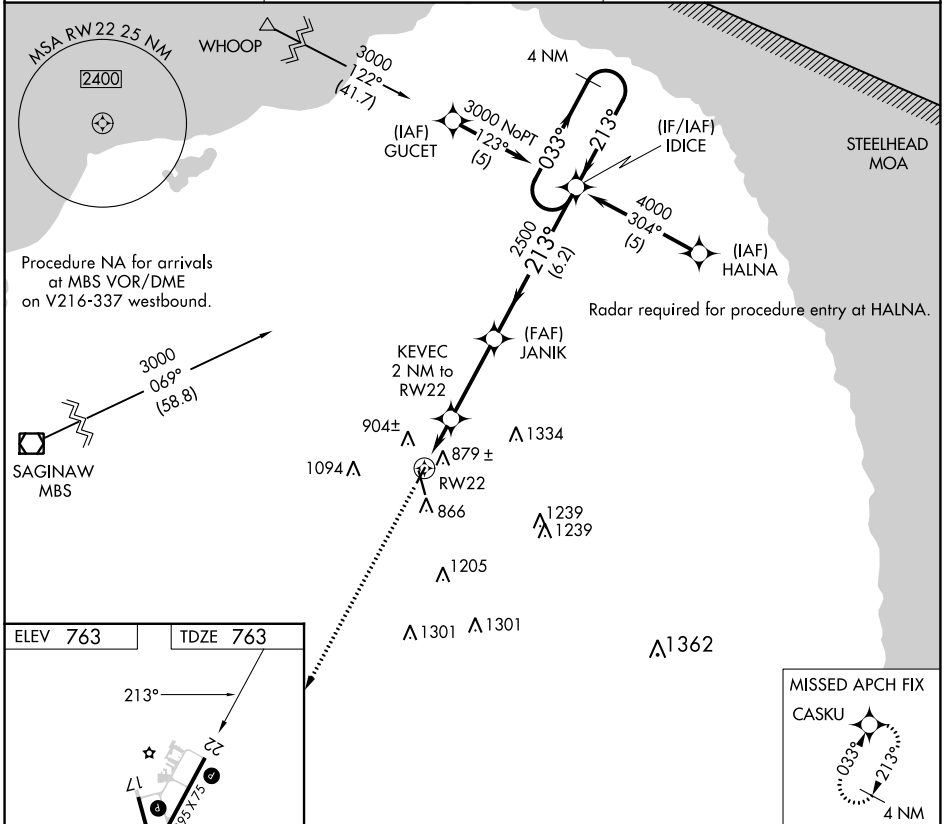
APP CRS	Rwy Idg	<b>3495</b>
<b>213°</b>	TDZE	<b>763</b>
	Apt Elev	<b>763</b>

# RNAV (GPS) RWY 22

HURON COUNTY MEML (BAX)

RNP APCH.	MISSED APPROACH: Climb to 3000 direct CASKU and hold.
<p>▼ When local altimeter setting not received, use MBS Intl altimeter setting and increase all MDA 140 feet; increase LNAV Cat C visibility ½ SM. Procedure NA at night. Rwy 22 helicopter visibility reduction below 1 SM NA.</p>	

AWOS-3 <b>118.6</b>	CLEVELAND CENTER <b>127.7 290.425</b>	UNICOM <b>123.075 (CTAF) 0</b>
------------------------	--	-----------------------------------



3000	CASKU	Visual Segment - Obstacles.	IDICE	4 NM Holding Pattern
↑	✧	JANIK	033° → 3000	← 213°
	KEVEC 2 NM to RW22	2500		
	RW22	1440		
	2 NM	3.3 NM	6.2 NM	
CATEGORY	A	B	C	D
LNAV MDA	1140-1	377 (400-1)		NA

EC-1, 22 FEB 2024 to 21 MAR 2024

EC-1, 22 FEB 2024 to 21 MAR 2024

WAAS CH <b>62805</b> <b>W35A</b>	APP CRS <b>350°</b>	Rwy Idg <b>5000</b> TDZE <b>756</b> Apt Elev <b>763</b>
--	------------------------	---

# RNAV (GPS) RWY 35

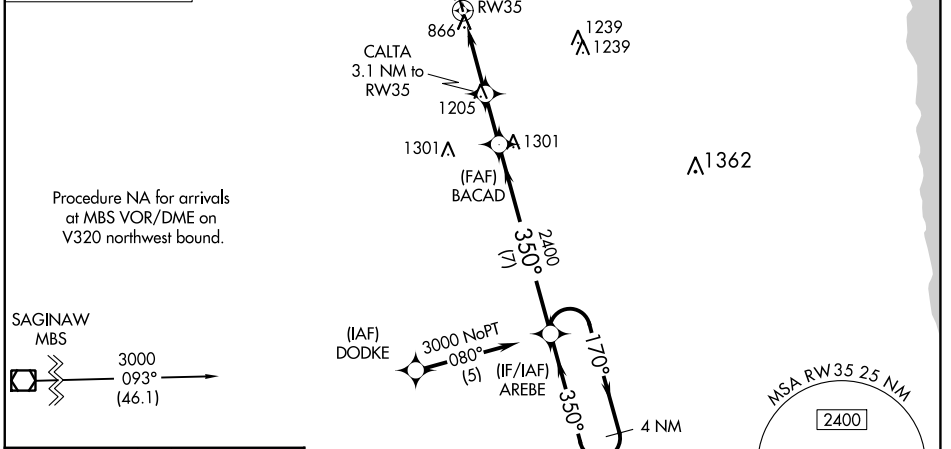
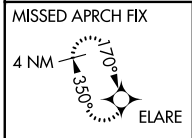
HURON COUNTY MEML (BAX)

**RNP APCH.**

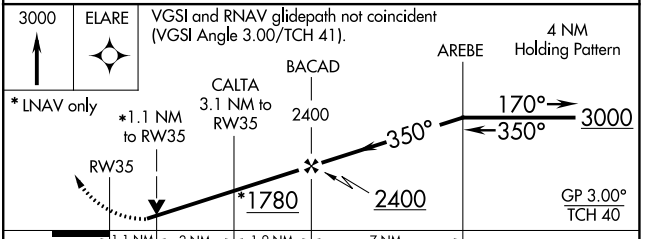
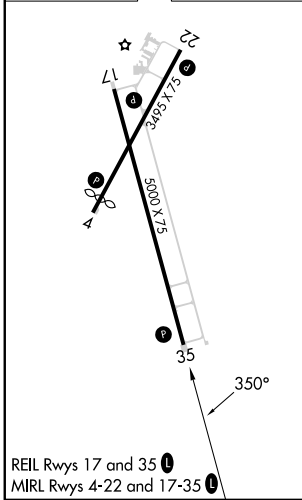
**⚠** For uncompensated Baro-VNAV systems, LNAV/VNAV NA below -16°C or above 54°C. When local altimeter setting not received, use MBS Intl altimeter setting and increase all DA 129 feet and all MDA 140 feet; increase LPV all Cats and LNAV Cat C visibility 3/8 mile. Rwy 35 helicopter visibility reduction below 3/4 SM NA. VDP and Baro/VNAV NA when using MBS Intl altimeter setting.

**MISSED APPROACH:** Climb to 3000 direct ELARE and hold.

AWOS-3 <b>118.6</b>	CLEVELAND CENTER <b>127.7 290.425</b>	UNICOM <b>123.075 (CTAF) 0</b>
------------------------	--	-----------------------------------



ELEV 763	TDZE 756
----------	----------



CATEGORY	A	B	C	D
LPV DA	1113-1¼	357 (400-1¼)		NA
LNAV/VNAV DA	1154-1½	398 (400-1½)		NA
LNAV MDA	1520-1 764 (800-1)	1520-1¼ 764 (800-1¼)	1520-2½ 764 (800-2½)	NA

EC-1, 22 FEB 2024 to 21 MAR 2024

EC-1, 22 FEB 2024 to 21 MAR 2024

APP CRS <b>033°</b>	Rwy Idg TDZE Apt Elev	<b>3195</b> <b>763</b> <b>763</b>
------------------------	-----------------------------	---

# RNAV (GPS) RWY 4

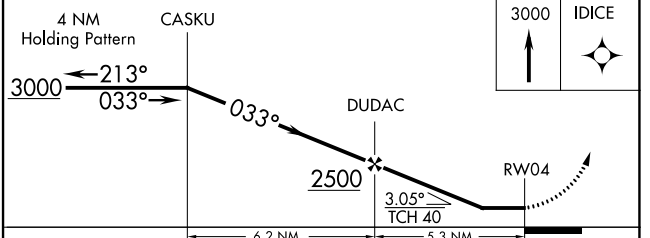
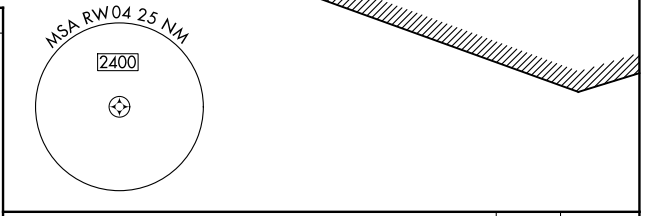
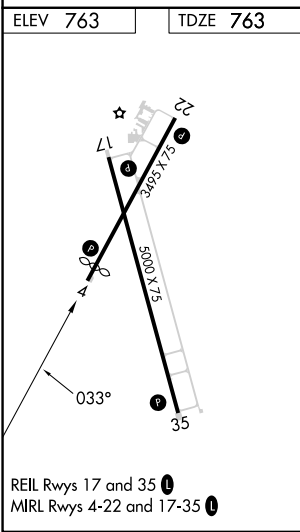
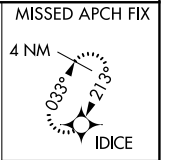
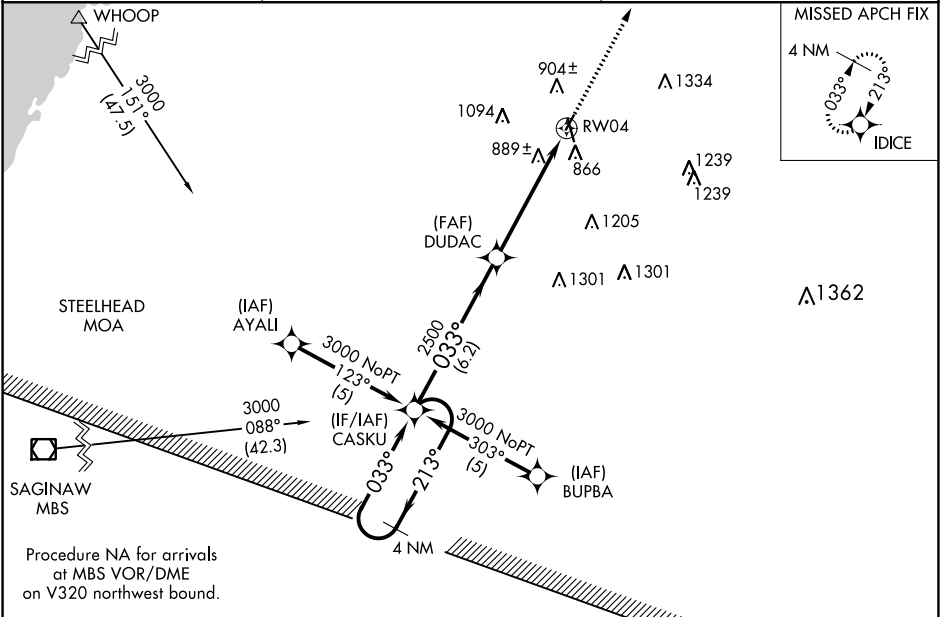
HURON COUNTY MEML (BAX)

RNP APCH.

When local altimeter setting not received, use MBS Intl altimeter setting and increase all MDA 140 feet increase LNAV Cat C visibility 1/2 mile. Helicopter visibility reduction below 1 SM NA. Procedure NA at night.

MISSED APPROACH: Climb to 3000 direct IDICE and hold.

AWOS-3 <b>118.6</b>	CLEVELAND CENTER <b>127.7 290.425</b>	UNICOM <b>123.075 (CTAF)</b>
------------------------	--	---------------------------------



CATEGORY	A	B	C	D
LNAV MDA	1140-1	377 (400-1)		NA

EC-1, 22 FEB 2024 to 21 MAR 2024

EC-1, 22 FEB 2024 to 21 MAR 2024