

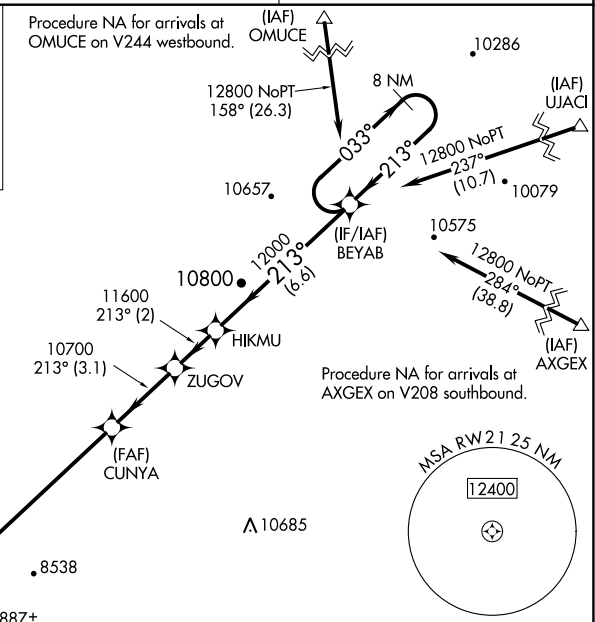
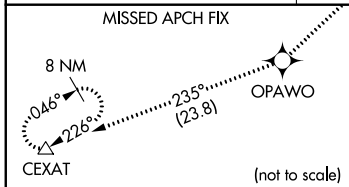
WAAS CH 99516 W21A	APP CRS 213°	Rwy Idg TDZE Apt Elev	7395 7564 7590
--	------------------------	-----------------------------	---

RNAV (GPS) RWY 21

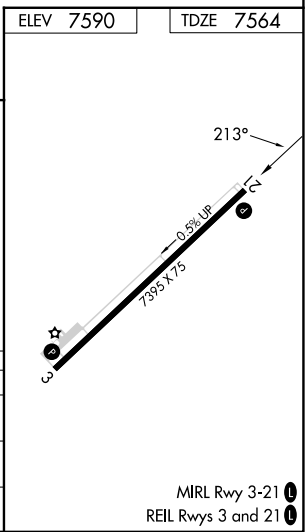
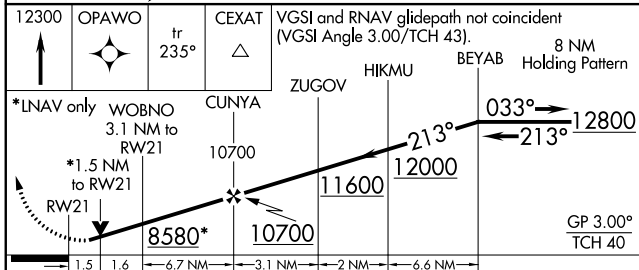
BRYCE CANYON (BCE)

RNP APCH. ▼ For uncompensated Baro-VNAV systems, LNAV/VNAV NA below -30°C or above 54°C. When local altimeter setting not received, procedure NA. Rwy 21 helicopter visibility reduction below ¼ SM NA.	MISSED APPROACH: Climb to 12300 direct OPAWO and on track 235° to CEXAT and hold.
--	---

ASOS 135.475	SALT LAKE CITY CENTER 133.6 269.25	UNICOM 122.8 (CTAF) ①
------------------------	--	---------------------------------



ELEV 7590	TDZE 7564
-----------	-----------



CATEGORY	A	B	C	D
LPV DA	7889-1 1/8 325 (300-1 1/8)			NA
LNAV/VNAV DA	8016-1 1/2 452 (500-1 1/2)			NA
LNAV MDA	8040-1 476 (500-1)		8040-1 3/8 476 (500-1 3/8)	NA

MIRL Rwy 3-21 ①
REIL Rwy 3 and 21 ①

SW-4, 22 FEB 2024 to 21 MAR 2024

SW-4, 22 FEB 2024 to 21 MAR 2024

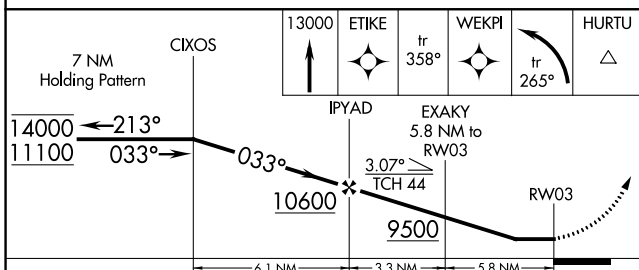
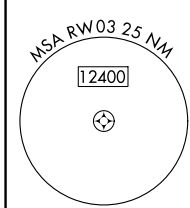
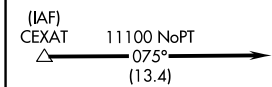
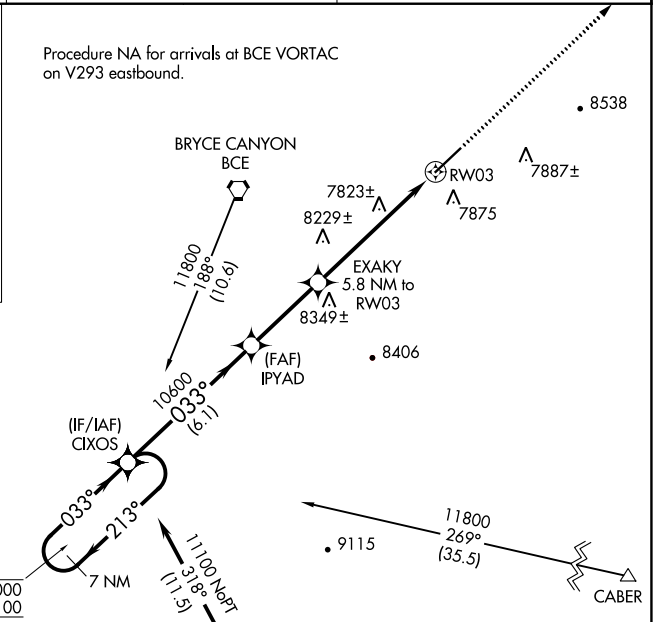
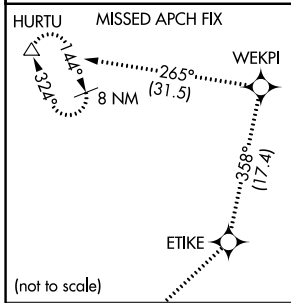
APP CRS	Rwy Idg	7395
033°	TDZE	7590
	Apt Elev	7590

RNAV (GPS) RWY 3

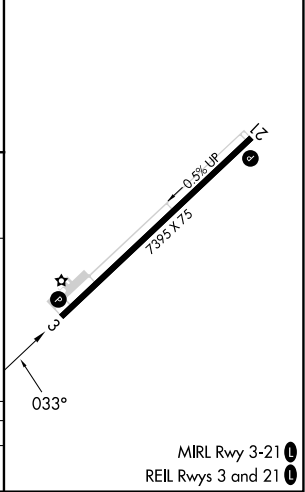
BRYCE CANYON (BCE)

RNP APCH.	MISSED APPROACH: Climb to 13000 direct ETIKE and on track 358° to WEKPI and left turn on track 265° to HURTU and hold.
<p>▼ Rwy 3 helicopter visibility reduction below 1 SM NA. When local altimeter setting not received, procedure NA. Procedure NA at night.</p>	

ASOS 135.475	SALT LAKE CITY CENTER 133.6 269.25	UNICOM 122.8 (CTAF)
------------------------	--	-------------------------------



ELEV 7590	TDZE 7590
-----------	-----------



CATEGORY	A	B	C	D
LNVA MDA	8440-1 850 (900-1)	8440-1¼ 850 (900-1¼)	8440-2½ 850 (900-2½)	NA

MIRL Rwy 3-21
 REIL Rwy 3 and 21

SW-4, 22 FEB 2024 to 21 MAR 2024

SW-4, 22 FEB 2024 to 21 MAR 2024