

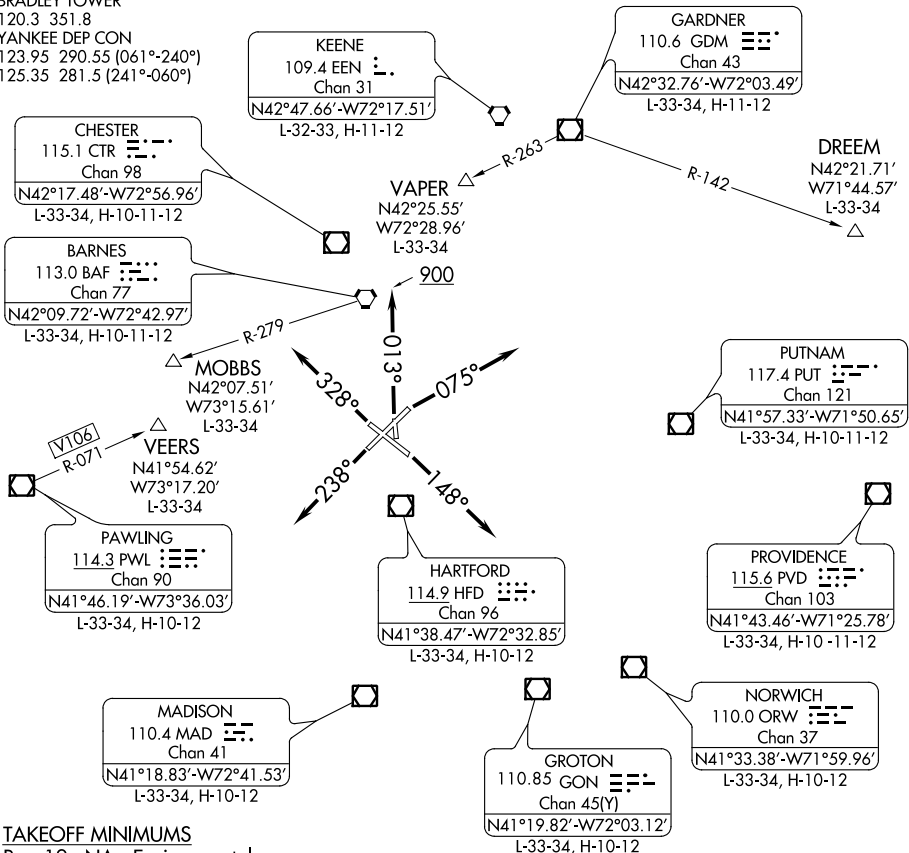
BRADLEY FOUR DEPARTURE

BRADLEY INTL (BDL)
WINDSOR LOCKS, CONNECTICUT

D-ATIS 118.15
CLNC DEL
121.75 322.3
GND CON
121.9 348.6
CPDLC
BRADLEY TOWER
120.3 351.8
YANKEE DEP CON
123.95 290.55 (061°-240°)
125.35 281.5 (241°-060°)

NOTE: RADAR required.
NOTE: Initial departure headings are predicated on avoiding noise sensitive areas, flight crew awareness and compliance is important in minimizing noise impacts on surrounding communities.
NOTE: Appropriate departure frequency to be assigned by ATC.

**TOP ALTITUDE:
4000**



NE-1, 12 SEP 2019 to 10 OCT 2019

NE-1, 12 SEP 2019 to 10 OCT 2019

TAKEOFF MINIMUMS

Rwy 19: NA - Environmental
Rwys 1, 6, 15, 24: Standard.
Rwy 33: Standard with minimum climb of 340' per NM to 1000.

NOTE: Chart not to scale.

DEPARTURE ROUTE DESCRIPTION

- TAKEOFF RUNWAY 1:** Climb heading 013° to 900, then as assigned, thence....
- TAKEOFF RUNWAY 6:** Climb heading 075° or as assigned, thence....
- TAKEOFF RUNWAY 15:** Climb heading 148° or as assigned, thence....
- TAKEOFF RUNWAY 24:** Climb heading 238° or as assigned, thence....
- TAKEOFF RUNWAY 33:** Climb heading 328° or as assigned, thence....

....on RADAR vectors to filed/assigned route or depicted fix. Maintain 4000 or assigned altitude, expect clearance to requested altitude/flight level 10 minutes after departure.

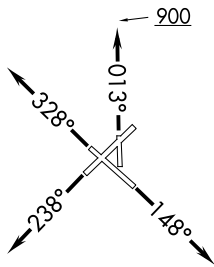
BRADLEY FOUR DEPARTURE

WINDSOR LOCKS, CONNECTICUT
BRADLEY INTL (BDL)

COASTAL SEVEN DEPARTURE

D-ATIS 118.15
CLNC DEL
121.75 322.3
GND CON
121.9 348.6
CPDLC
BRADLEY TOWER
120.3 351.8
YANKEE DEP CON
123.95 290.55

**TOP ALTITUDE:
4000**



HARTFORD
114.9 HFD
Chan 96
N41°38.47'-W72°32.85'

THUMB
N41°31.40'
W72°21.53'

NOTE: RADAR required.
NOTE: Initial departure headings are predicated on avoiding noise sensitive areas. Flight crew awareness and compliance is important in minimizing noise impacts on surrounding communities.

CALVERTON
117.2 CCC
Chan 119
N40°55.78'-W72°47.93'

HAMPTON
113.6 HTO
Chan 83

KENNEDY
115.9 JFK
Chan 106

SHERL
N40°15.34'
W73°07.30'
L-34, H-10-12

GEDIC
N40°08.77'
W73°12.12'
L-34, H-10-12

TAKEOFF MINIMUMS:
Rwy 19: NA-Environmental.
Rwys 1, 6, 15, 24: Standard.
Rwy 33: Standard with minimum climb of 340' per NM to 1000.

(NARRATIVE ON FOLLOWING PAGE)

NOTE: Chart not to scale.

COASTAL SEVEN DEPARTURE

NE-1, 12 SEP 2019 to 10 OCT 2019

NE-1, 12 SEP 2019 to 10 OCT 2019

COASTAL SEVEN DEPARTURE



DEPARTURE ROUTE DESCRIPTION

TAKEOFF RUNWAY 1: Climb heading 013° to 900, then as assigned for RADAR vectors to HFD VOR/DME, thence...

TAKEOFF RUNWAY 6: Climb on assigned heading for RADAR vectors to HFD VOR/DME, thence...

TAKEOFF RUNWAY 15: Climb heading 148° or as assigned for RADAR vectors to HFD VOR/DME, thence...

TAKEOFF RUNWAY 24: Climb heading 238° or as assigned for RADAR vectors to HFD VOR/DME, thence...

TAKEOFF RUNWAY 33: Climb heading 328° or as assigned for RADAR vectors to HFD VOR/DME, thence...

...from over HFD VOR/DME proceed on HFD VOR/DME R-143 to THUMB INT, then on HTO VOR/DME R-010 to YODER INT, then on CCC VOR/DME R-057 to CCC VOR/DME, then on (transition) or (assigned route). Maintain 4000 or assigned altitude. Expect clearance to requested flight level 10 minutes after departure.

GEDIC TRANSITION (CSTL7.GEDIC): From over CCC VOR/DME on CCC R-215 to GEDIC.

SHERL TRANSITION (CSTL7.SHERL): From over CCC VOR/DME on CCC R-213 to SHERL.

NE-1, 12 SEP 2019 to 10 OCT 2019

NE-1, 12 SEP 2019 to 10 OCT 2019