

# DEER PARK THREE ARRIVAL

WINDSOR LOCKS, CONNECTICUT

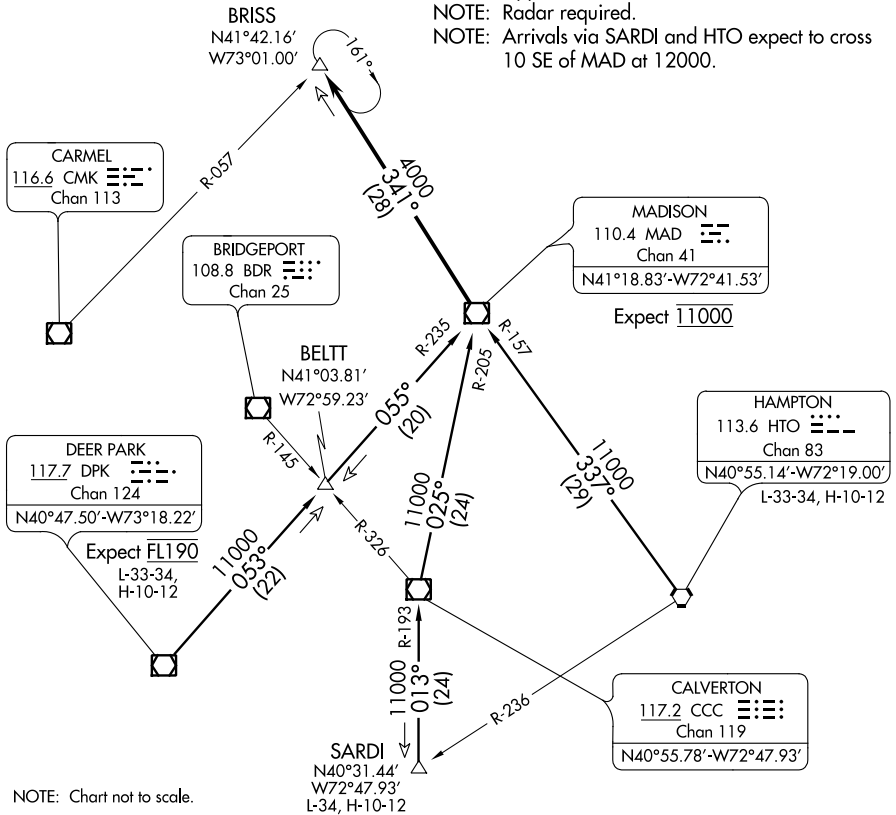
BRADLEY INTL D-ATIS  
 118.15  
 YANKEE APP CON  
 123.95 290.55 (061-240)  
 125.35 281.5 (241-060)

WESTFIELD-BARNES  
 RGNL

WESTOVER ARB/  
 METROPOLITAN

BRADLEY  
 INTL

NOTE: Applicable to arrivals 11000 and above.  
 NOTE: Radar required.  
 NOTE: Arrivals via SARDI and HTO expect to cross  
 10 SE of MAD at 12000.



NE-1, 12 SEP 2019 to 10 OCT 2019

NE-1, 12 SEP 2019 to 10 OCT 2019

## ARRIVAL ROUTE DESCRIPTION

**DEER PARK TRANSITION (DPK.DPK3):** From over DPK VOR/DME on DPK R-053 to BELTT INT, then on MAD R-235 to MAD VOR/DME. Thence . . . .

**HAMPTON TRANSITION (HTO.DPK3):** From over HTO VORTAC on HTO R-337 and MAD R-157 to MAD VOR/DME. Thence . . . .

**SARDI TRANSITION (SARDI.DPK3):** From over SARDI INT on CCC R-193 to CCC VOR/DME, then on CCC R-025 and MAD R-205 to MAD VOR/DME. Thence . . . .

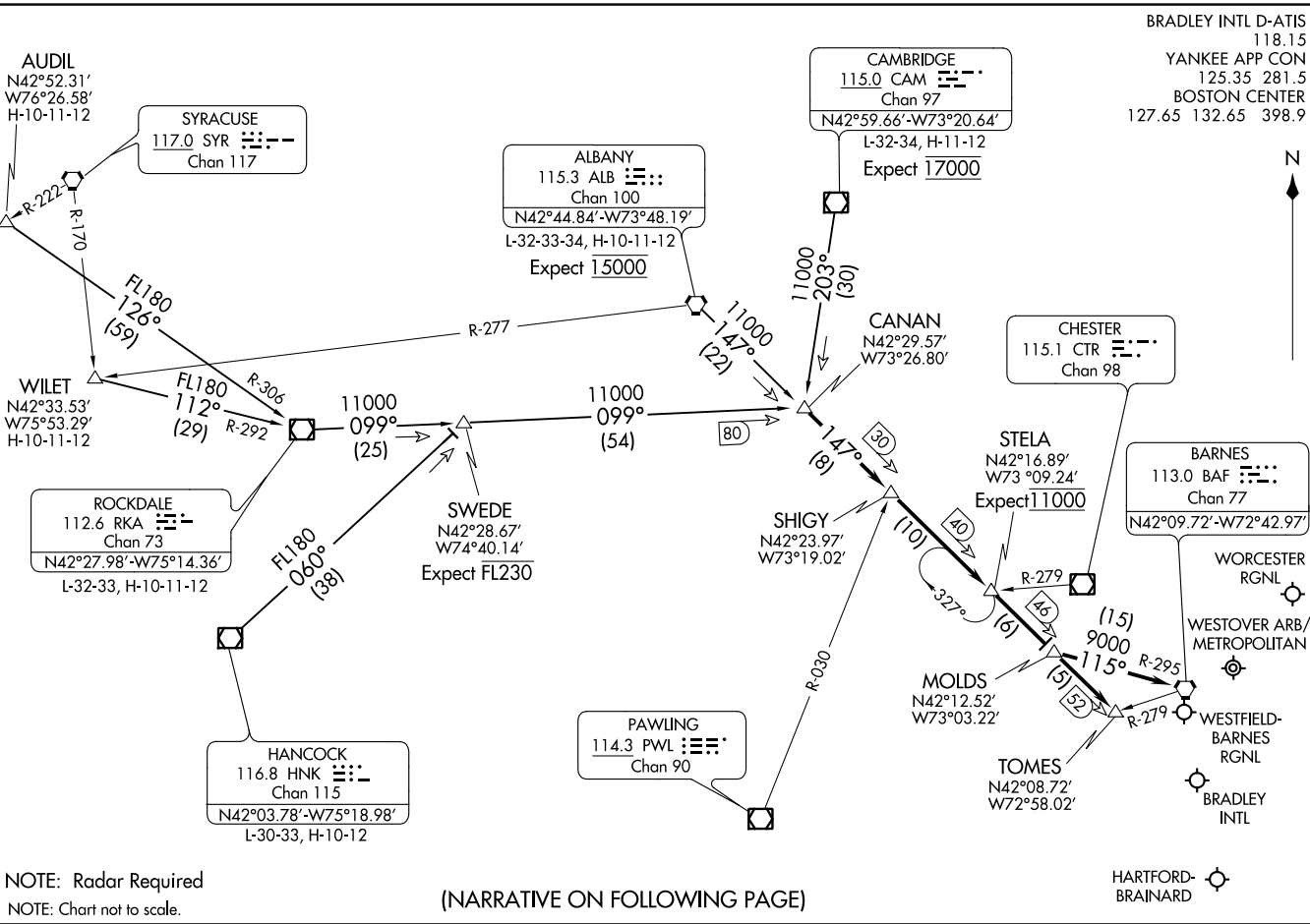
From over MAD VOR/DME on MAD R-341 to BRISS INT/MAD 28 DME.  
 Expect radar vectors to final approach course prior to BRISS INT.

# DEER PARK THREE ARRIVAL

WINDSOR LOCKS, CONNECTICUT

STELA ONE ARRIVAL  
(STELA,STEA1) 31MAY12

(STELA,STEA1) 19115  
STELA ONE ARRIVAL



# STELA ONE ARRIVAL

## ARRIVAL ROUTE DESCRIPTION

ALBANY TRANSITION (ALB.STELA1): From over ALB VORTAC via ALB R-147 to CANAN INT. Thence. . . .

AUDIL TRANSITION (AUDIL.STELA1): From over AUDIL INT via RKA R-306 to RKA VOR/DME, then via RKA R-099 to CANAN INT. Thence. . . .

CAMBRIDGE TRANSITION (CAM.STELA1): From over CAM VOR/DME via CAM R-203 to CANAN INT. Thence. . . .

HANCOCK TRANSITION (HНК.STELA1): From over HНК VOR/DME via HНК R-060 to SWEDE INT, then via RKA R-099 to CANAN INT. Thence. . . .

WILET TRANSITION (WILET.STELA1): From over WILET INT via RKA R-292 to RKA VOR/DME, then via RKA R-099 TO CANAN INT. Thence. . . .

KBDL and KHFD ARRIVALS: From over CANAN INT via ALB R-147 to TOMES INT. Expect radar vectors to final approach course prior to TOMES INT.

KBAF, KCEF and KORH ARRIVALS: From over CANAN INT via ALB R-147 to MOLDS INT. Then via BAF R-295 to BAF VORTAC. Expect radar vectors to final approach course prior to BAF VORTAC.

NE-1, 12 SEP 2019 to 10 OCT 2019

NE-1, 12 SEP 2019 to 10 OCT 2019