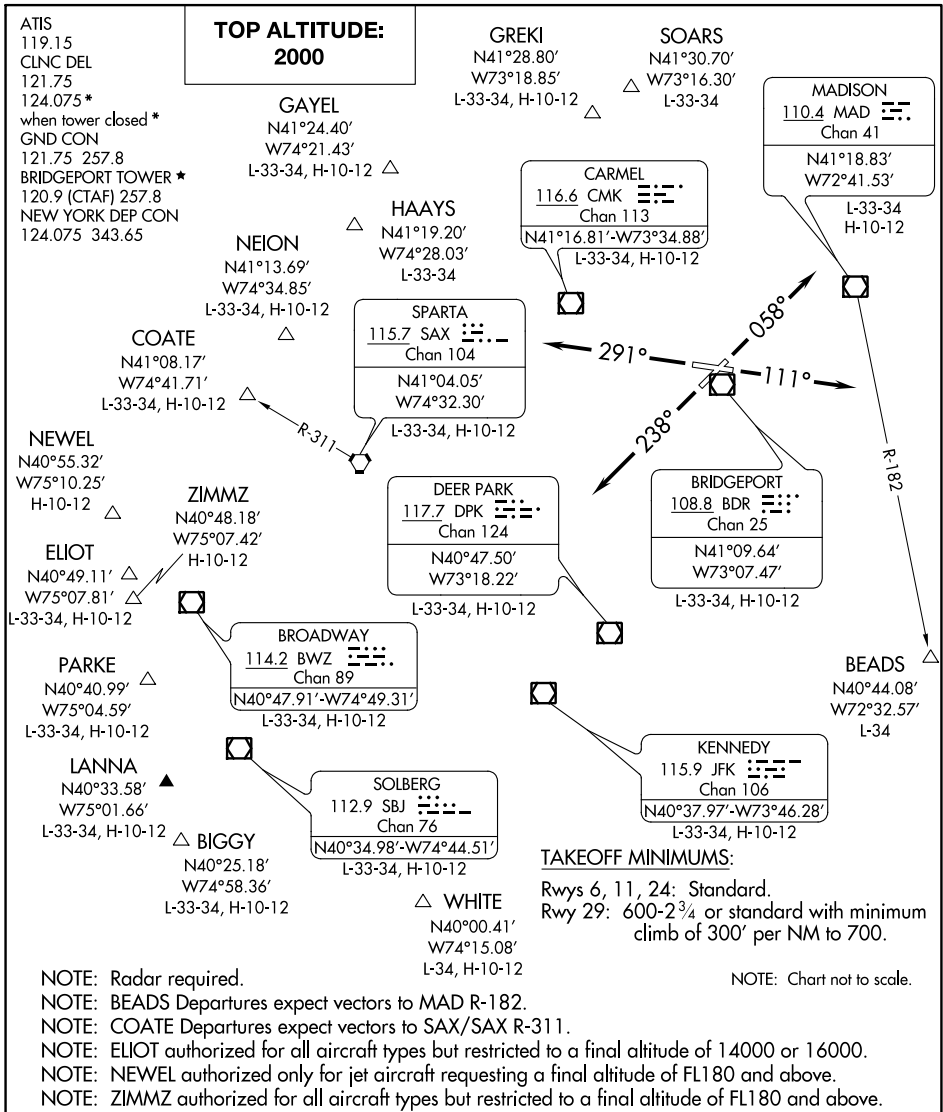


BRIDGEHAVEN NINE DEPARTURE

AL-621 (FAA)

BRIDGEPORT, CONNECTICUT



NE-1, 28 JAN 2021 to 25 FEB 2021

NE-1, 28 JAN 2021 to 25 FEB 2021

DEPARTURE ROUTE DESCRIPTION

TAKEOFF RUNWAY 6: Climb heading 058°, thence. . .

TAKEOFF RUNWAY 11: Climb heading 111°, thence. . .

TAKEOFF RUNWAY 24: Climb heading 238°, thence. . .

TAKEOFF RUNWAY 29: Climb heading 291°, thence. . .

. . . expect vectors to assigned route/fix. Maintain 2000. Expect clearance to filed altitude/flight level within ten (10) minutes after departure.



DEPARTURE ROUTE DESCRIPTION

TAKEOFF RUNWAY 6: Climb heading 058°, thence. . . .

TAKEOFF RUNWAY 11: Climb heading 111°, thence. . . .

TAKEOFF RUNWAY 24: Climb heading 238°, thence. . . .

TAKEOFF RUNWAY 29: Climb heading 291°, thence. . . .

. . . .Expect vectors to assigned route/fix. Maintain 2000. Expect clearance to filed altitude/flight level within ten (10) minutes after departure.

NE-1, 28 JAN 2021 to 25 FEB 2021

NE-1, 28 JAN 2021 to 25 FEB 2021